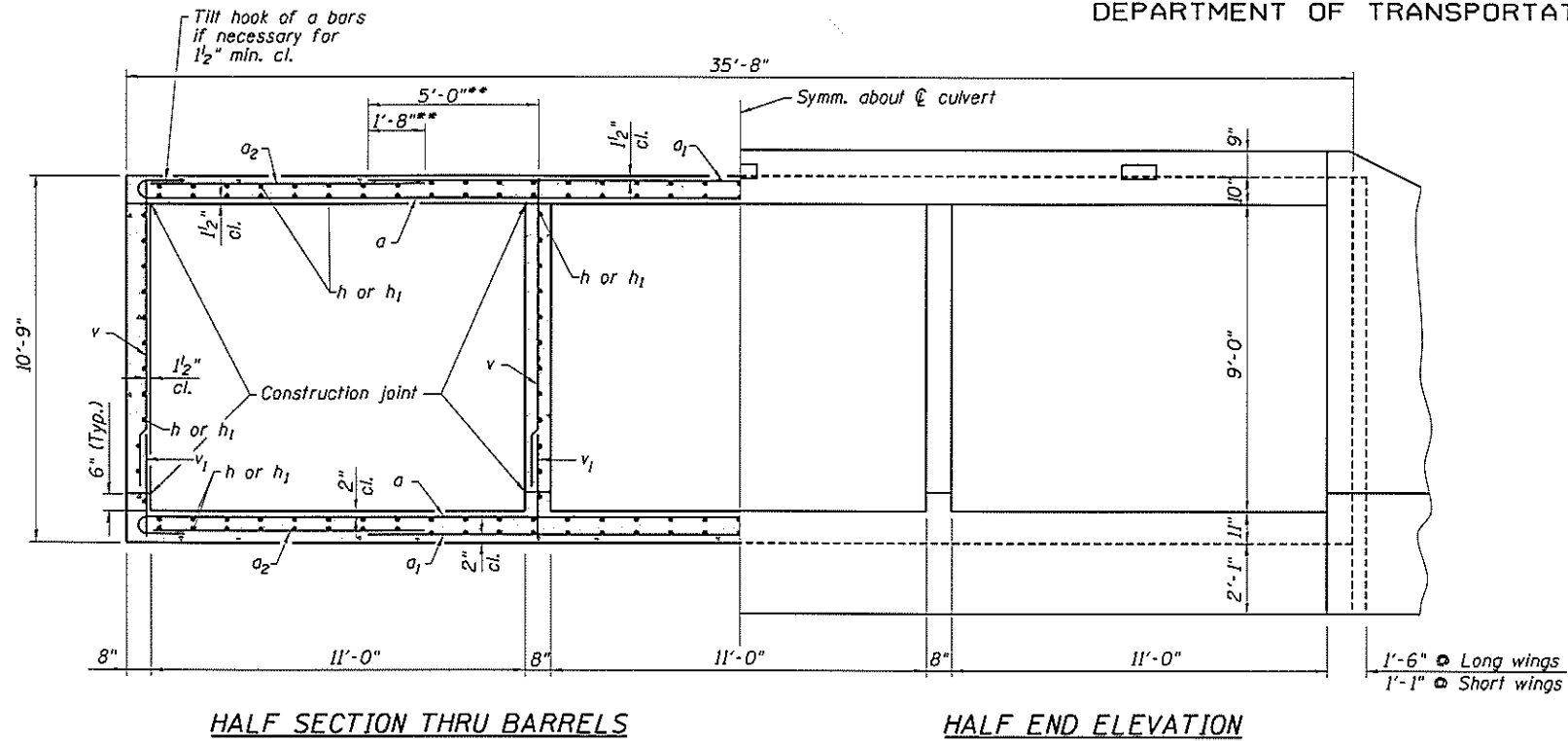


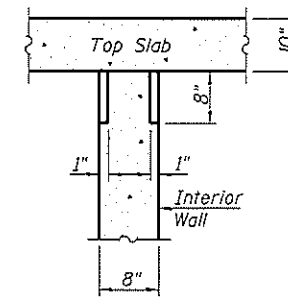
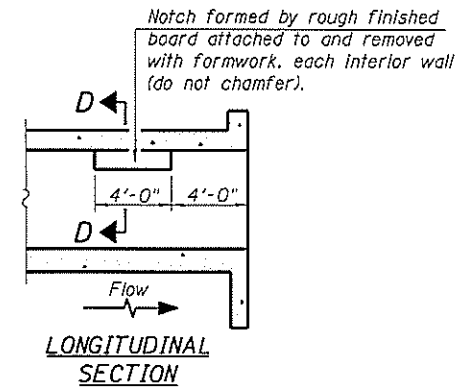
STATE OF ILLINOIS
DEPARTMENT OF TRANSPORTATION



HALF SECTION THRU BARRELS

HALF END ELEVATION

** Dimensions noted thus are parallel to Q Roadway



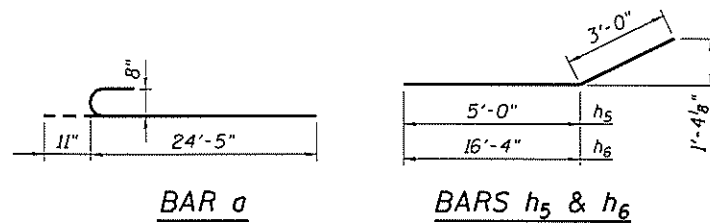
SECTION D-D
PHOEBE NESTING
SITE DETAILS
(Downstream End Only)

BILL OF MATERIAL

Bar	No.	Size	Length	Shape
a	320	#8	25'-4"	U
a1	188	#8	24'-8"	U
a2	160	#5	11'-6"	U
d	70	#4	4'-6"	L
h	188	#5	31'-2"	U
h1	376	#5	21'-1"	U
h2	44	#6	23'-11"	U
h3	40	#8	8'-0"	U
h4	26	#8	14'-8"	U
h5	34	#8	8'-0"	U
h6	32	#8	19'-4"	U
s	88	#4	4'-10"	L
s1	44	#4	4'-8"	L
v	418	#5	9'-0"	U
v1	418	#5	3'-0"	U
v2	16	#5	13'-2"	U
Concrete Box Culverts			Cu. Yd.	275.5
Reinforcement Bars			Pound	62,240

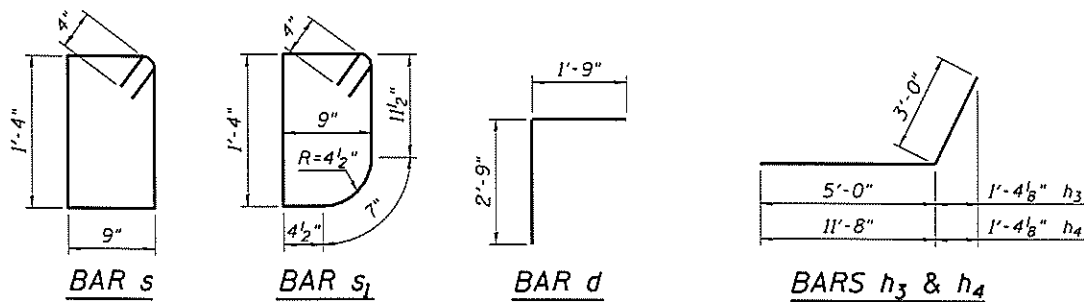
MIN. BAR LAP

- #5 ----- 1'-8"
- #6 ----- 2'-0"
- #8 ----- 4'-6"



BAR a

BARS h5 & h6

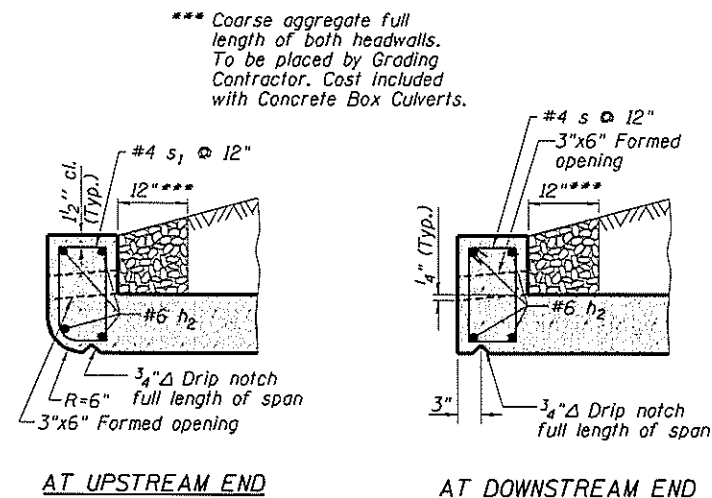


BAR s

BAR s1

BAR d

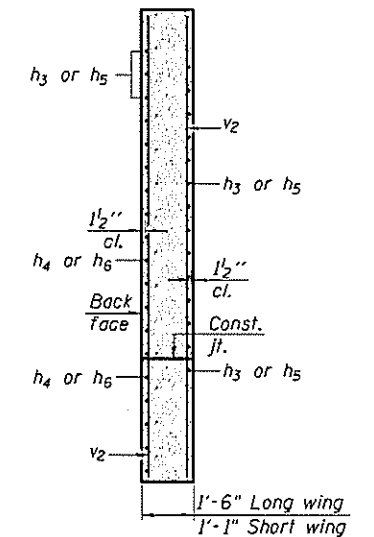
BARS h3 & h4



AT UPSTREAM END

AT DOWNSTREAM END

DRAIN DETAILS



SECTION C-C
(Bars shown are in long wing)

**BOX CULVERT DETAILS
STRUCTURE NO. 051-2008**

ESCA
CONSULTANTS, INC.

DESIGNED BY:	ELH	03/10
DRAWN BY:	DWH/HAS	03/10
CHECKED BY:	ELH	04/10
APPROVED BY:	RDP	04/10

SHEET NO. 6 10 SHEETS	F.A.P. RTE.	SECTION	COUNTY	TOTAL SHEETS	SHEET NO.
	781	109B-1	LAWRENCE	34	20
			CONTRACT NO. 74105		
FED. ROAD DIST. NO.		ILLINOIS	FED. AID PROJECT		