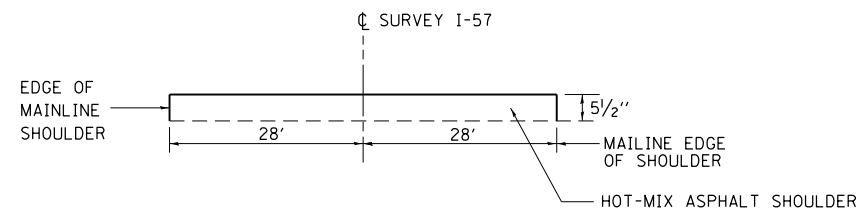


DETAIL OF MEDIAN CROSSOVER

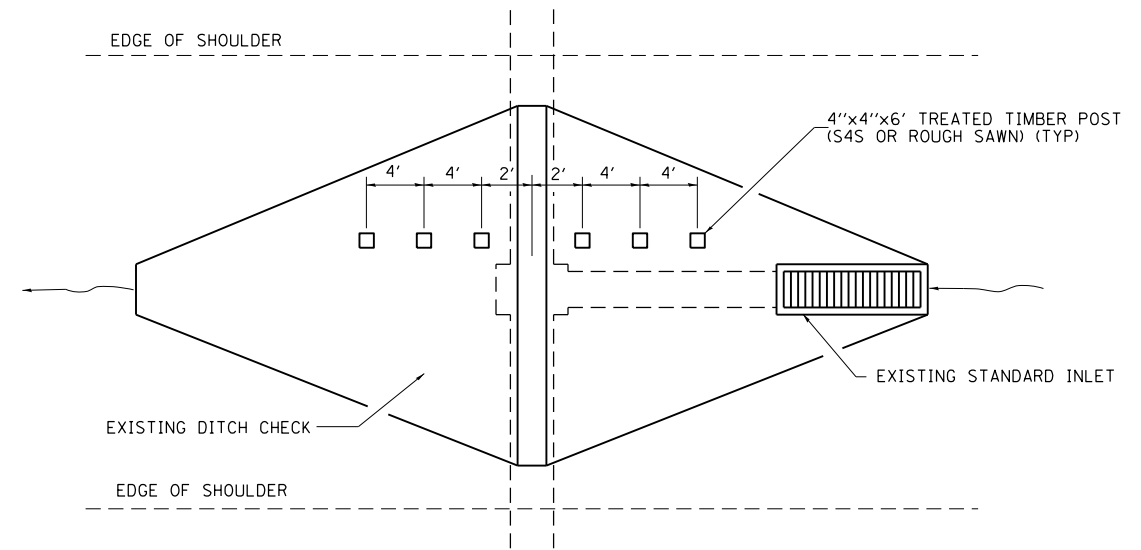


SECTION A-A

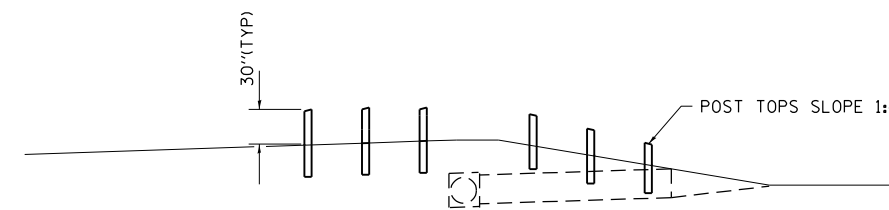
STATION 1051+00
STATION 1201+00
STATION 1335+15

BENCHMARKS

| BENCHMARK | ELEV. | DESCRIPTION |
|--------------|--------|--|
| TBM 026-0079 | 100.00 | TOP OF THE EAST END OF GUARDRAIL POST ON THE INSIDE OF THE SOUTH PIER |
| TBM 026-0055 | 100.00 | CHISELED SQUARE ON THE CENTER OF THE SOUTH PIER UNDER INTERSTATE DR. SOUTH OF EBL I-70 |
| TBM 026-0024 | 100.00 | CHISELED SQUARE ON THE SW CORNER OF WBL I-70 OVER A RR EAST OF ST. ELMO EXIT 76, SN 026-0024 |
| TBM 026-0080 | 100.00 | TOP OF THE EAST END OF GUARDRAIL POST ON THE INSIDE OF THE SOUTH PIER |
| TBM 025-0054 | 100.00 | CHISELED SQUARE ON THE TOP CENTER OF A BOX CULVERT IN THE SE QUADRANT OF I-70 & SN 025-0054 |
| TBM 025-0055 | 100.00 | CHISELED SQUARE ON THE NORTH SIDE OF THE NORTH LEG OF "GAS EXIT 82" SIGN |
| TBM 025-0006 | 100.00 | CHISELED SQUARE ON THE NW WINGWALL OF WBL I-70 (SN 025-0006) OVER RR WEST OF ALTAMONT EXIT |



PLAN VIEW



PROFILE VIEW

DETAIL OF GUARD POSTS

GUARD POST SCHEDULE

| LOCATION | GUARD POSTS EACH |
|----------|------------------|
| 1056+56 | 6.0 |
| 1086+85 | 6.0 |
| 1101+32 | 6.0 |
| 1270+49 | 6.0 |
| 1278+75 | 6.0 |
| TOTALS | 30.0 |

• EFFINGHAM & FAYETTE

| | | | |
|--|-------------------------------|------------|-----------|
| FILE NAME = | USER NAME = swartzw | DESIGNED - | REVISED - |
| c:\pwork\pwork\swartzw\d0186577\077469-sht-details.dgn | | DRAWN - | REVISED - |
| | PLOT SCALE = 100.0000' / 1in. | CHECKED - | REVISED - |
| | PLOT DATE = 6/5/2014 | DATE - | REVISED - |

STATE OF ILLINOIS
DEPARTMENT OF TRANSPORTATION

MEDIAN CROSSOVER DETAIL,
GUARD POST DETAIL AND BENCHMARKS

SCALE: NA SHEET NO. 1 OF 1 SHEETS STA. TO STA.

| F.A.I. RTE. | SECTION | COUNTY | TOTAL SHEETS | SHEET NO. |
|---------------------------|-----------------------|--------|--------------|--------------------|
| 70 | (26-5,26-5-1,25-1-1)R | | 92 | 13 |
| | | | | CONTRACT NO. 74469 |
| ILLINOIS FED. AID PROJECT | | | | |