



INDEX OF SHEETS

SHEET NO.	TITLE
1	COVER SHEET
2	INDEX OF SHEETS
3	GENERAL NOTES
4-6	SUMMARY OF QUANTITIES
7	TYPICAL CROSS-SECTION
8	RAMP TYPICAL
9-11	STAGING TYPICAL SECTIONS
12-14	SCHEDULES
15	DETAILS
16	OUTLET PROTECTOR DETAIL
17-24	PLAN SHEETS
25-29	PAVEMENT MARKING DETAILS

THE FOLLOWING STANDARDS ARE A PART OF THESE PLANS AND ARE INCLUDED AFTER SHEET NO. : 29

THE FOLLOWING STANDARDS ARE A PART OF THESE PLANS AND ARE INCLUDED FOLLOWING THE LAST NUMBERED SHEET OF THE PLANS.

000001-06	STANDARD SYMBOLS, ABBREVIATIONS, AND PATTERNS
001001-02	AREAS OF REINFORCEMENT BARS
001006	DECIMAL OF AN INCH AND OF A FOOT
442001-04	CLASS A PATCHES
601001-04	SUB-SURFACE DRAINS
630001-10	STEEL PLATE BEAM GUARDRAIL
630301-06	SHOULDER WIDENING FOR TYPE 1 (SPECIAL) GUARDRAIL TERMINALS
631033-05	TRAFFIC BARRIER TERMINAL, TYPE 6B
635001-01	DELINEATORS
635006-03	REFLECTOR AND TERMINAL MARKER PLACEMENT
635011-02	REFLECTOR MARKER AND MOUNTING DETAILS
642001-02	SHOULDER RUMBLE STRIPS, 16 IN.
643001-02	SAND MODULE IMPACT ATTENUATORS
701101-04	OFF-ROAD OPERATIONS, MULTILANE, 15' TO 24" FROM PAVEMENT EDGE
701106-02	OFF-ROAD OPERATIONS, MULTILANE, MORE THAN 15' AWAY
701400-07	APPROACH TO LANE CLOSURE, FREEWAY/EXPRESSWAY
701401-08	LANE CLOSURE, FREEWAY/EXPRESSWAY
701406-08	LANE CLOSURE, FREEWAY/EXPRESSWAY, DAY OPERATIONS ONLY
701411-08	LANE CLOSURE, MULTILANE, AT ENTRANCES OR EXIT RAMP, FOR SPEEDS >= 45 MPH
701426-06	LANE CLOSURE, MULTILANE, INTERMITTENT OR MOVING OPERATION, FOR SPEEDS >= 45 MPH
701456-03	PARTIAL EXIT RAMP CLOSURE FREEWAY/EXPRESSWAY
701901-03	TRAFFIC CONTROL DEVICES
780001-04	TYPICAL PAVEMENT MARKINGS
781001-03	TYPICAL APPLICATIONS RAISED REFLECTIVE PAVEMENT MARKERS

FILE NAME =	USER NAME = staffennk	DESIGNED -	REVISED -	<b>STATE OF ILLINOIS DEPARTMENT OF TRANSPORTATION</b>	<b>INDEX OF SHEETS</b>		F.A.I. RTE.	SECTION	COUNTY	TOTAL SHEETS	SHEET NO.
ct:\pwork\puidoc\staffennk\0310748\074598-ah-1-index.dgn		DRAWN -	REVISED -		70	118-46, 18-47RS-2	CUMBERLAND	29	2		
PLOT SCALE = 1/8" = 1'-0"		CHECKED -	REVISED -		SCALE: N/A	SHEET 1 OF 1 SHEETS	STA.	TO STA.	CONTRACT NO. 74598		
Default	PLOT DATE = 6/7/2014	DATE -	REVISED -		ILLINOIS FED. AID PROJECT						

GENERAL NOTES

THIS SECTION SHALL BE CONSTRUCTED IN ACCORDANCE WITH THE PLANS; THE "STANDARD SPECIFICATIONS FOR ROAD AND BRIDGE CONSTRUCTION" ADOPTED JANUARY 1, 2012; AND THE SPECIAL PROVISIONS INCLUDED IN THE PROPOSAL.

THIS PROJECT IS LOCATED ON FAI ROUTE 70 (I-70) IN CUMBERLAND COUNTY, 7.5 MILES EAST OF THE EFFINGHAM COUNTY LINE TO 1.8 MILES EAST OF IL 130. THE WORK INCLUDED IN SECTION (18-46, 18-47)RS-2 CONSISTS OF PATCHING, HOT-MIX ASPHALT SURFACE REMOVAL, HOT-MIX ASPHALT RESURFACING, HOT MIX ASPHALT SHOULDERS, GUARDRAIL REMOVAL AND INSTALLATION, PAVEMENT MARKING, AND ANY OTHER WORK NECESSARY TO COMPLETE THE SECTION.

PAVEMENT MARKING SHALL BE APPLIED IN ACCORDANCE WITH SECTION 780 OF THE STANDARD SPECIFICATIONS. SHORT TERM PAVEMENT MARKING SHALL BE APPLIED, AS NEEDED, TO THE MILLED SURFACE, BITUMINOUS MATERIALS (PRIME COAT), HMA BINDER COURSE, AND HMA SURFACE COURSE AS SPECIFIED IN SECTION 703 OF THE STANDARD SPECIFICATIONS. TEMPORARY TAPE SHALL BE USED ON THE SURFACE COURSE AND HMA SHOULDERS. PAINT SHALL BE USED ON MILLED SURFACES.

THE TOTAL QUANTITY OF THERMOPLASTIC PAVEMENT MARKING - LINE 4" CONSISTS OF 72,343 FEET OF YELLOW AND 75,466 FEET OF WHITE.

THE TOTAL QUANTITY OF PREFORMED PLASTIC PAVEMENT MARKING, TYPE B - INLAID - LINE 6" CONSISTS OF 17,600 FEET OF WHITE.

THE RAISED REFLECTIVE PAVEMENT MARKERS SHALL BE PLACED AS DOUBLE MARKERS ON I-70 AS SHOWN ON STANDARD 781001. THE TOTAL QUANTITY OF RAISED REFLECTIVE PAVEMENT MARKERS IS 2017 ONE-WAY CRYSTAL AND 61 ONE-WAY AMBER.

ALL OF THE EXISTING HMA, EXCLUDING SHOULDERS, SHALL BE REMOVED DOWN TO THE ORIGINAL CONCRETE PAVEMENT. THE SHOULDERS SHALL BE MILLED AT INTERMITTENT LOCATIONS TO ALLOW FOR ADEQUATE DRAINAGE. THE LOCATIONS SHALL BE DETERMINED BY THE ENGINEER IN THE FIELD. THE COST OF ALLOWING ADEQUATE DRAINAGE SHALL BE INCLUDED IN THE COST OF THE PAY ITEMS INVOLVED.

ACCORDING TO EXISTING PAVEMENT CORES, THE HMA THICKNESS VARIES. THE INTENT IS TO MATCH THE EXISTING GRADE, NOT COMPROMISING THE THICKNESS OF THE SMA SURFACE COURSE. ANY THICKNESS CORRECTION SHALL BE MADE UP IN THE FINE GRADED BINDER LIFTS.

THE CONTRACTOR WILL BE REQUIRED TO USE AN MATERIAL TRANSFER DEVICE AT ALL TIMES WHEN CONSTRUCTING STONE MATRIX ASPHALT, N80.

AN ESTIMATED QUANTITY OF HMA SHOULDERS AND PAVED SHOULDER REMOVAL HAS BEEN INCLUDED FOR ANY NECESSARY SHOULDER REPAIR. THE QUANTITIES SHOWN IN THE PLANS ARE ESTIMATES ONLY, THE FINAL LOCATIONS AND QUANTITIES SHALL BE DETERMINED BY THE ENGINEER IN THE FIELD.

THE EXISTING PAVEMENT SHALL BE PATCHED IN ACCORDANCE WITH SECTION 442 OF THE STANDARD SPECIFICATIONS AND THE SPECIAL PROVISIONS. CLASS A PAVEMENT PATCHING IS INCLUDED FOR PATCHING THE PAVEMENT ON I-70. THE PAVEMENT SHALL BE PATCHED AFTER THE EXISTING HMA HAS BEEN REMOVED FROM THE LANE UNDER CONSTRUCTION. AN ESTIMATED QUANTITY OF HOT-MIX ASPHALT FOR PATCHING POTHOLES (COLD MIX) HAS BEEN INCLUDED FOR ANY NECESSARY POTHOLE PATCHING. THE QUANTITIES OF PATCHING AND POTHOLE PATCHING SHOWN IN THE PLANS ARE ESTIMATES ONLY, THE FINAL LOCATIONS AND QUANTITIES SHALL BE DETERMINED BY THE ENGINEER IN THE FIELD.

THE RESIDENT ENGINEER SHALL BE THE SOLE JUDGE CONCERNING THE CURING TIME FOR THE VARIOUS HOT-MIX ASPHALT LIFTS.

THE CONTRACTOR SHALL PROVIDE INTERNET ACCESSIBILITY TO THE HOT-MIX ASPHALT PLANT QUALITY CONTROL LAB SO THAT HOT-MIX ASPHALT PLANT REPORTS CAN BE E-MAILED TO THE DISTRICT HEADQUARTERS. THIS WORK SHALL BE INCLUDED IN THE COST OF ALL HOT-MIX ASPHALT ITEMS.

IN ADDITION TO THE REQUIREMENTS IN ARTICLE 701.15(J), A LAPTOP COMPUTER SHALL BE SUPPLIED BY THE CONTRACTOR.

MATERIAL FOR AGGREGATE WEDGE SHOULDER, TYPE B SHALL BE CRUSHED STONE OR CRUSHED CONCRETE.

A UNIFORMLY STRAIGHT SAW CUT SHALL BE MADE AT LOCATIONS WHERE PROPOSED NEW CONSTRUCTION WILL ABUT EXISTING HOT-MIX ASPHALT SURFACES. THE SAW CUT SHALL BE MADE FULL DEPTH THROUGH THE EXISTING SURFACE. THIS WORK WILL BE CONSIDERED INCLUDED IN THE COST OF THE CONTRACT ITEMS INVOLVED AND NO EXTRA COMPENSATION WILL BE ALLOWED.

THE FOLLOWING MIXTURE REQUIREMENTS ARE APPLICABLE FOR THIS PROJECT:

APPLICATION	AC/PG	DESIGN AIR VOIDS	MIXTURE COMPOSITION	FRICTION AGGREGATE
HMA SURFACE COURSE - POLYMERIZED HMA SURFACE COURSE, SMA, N80	SBS PG 76-22	4.0% @ N=80	IL - 12.5	N/A
TOP BINDER COURSE LIFT - POLYMERIZED HMA BINDER COURSE, IL-19.0 FG, N90	SBS PG 70-22	4.0% @ N=90	IL - 19.0 FG	N/A
BINDER COURSE LIFT #1 - HMA BINDER COURSE, IL-19.0 FG, N90	PG 64-22	4.0% @ N=90	IL - 19.0 FG	N/A
HMA SHOULDERS - 2" OVERLAY AND REPAIR TOP LIFT (2") HMA SURFACE COURSE - INTERCHANGE RAMP HMA SURFACE COURSE, MIX "C", N90	PG 64-22	4.0% @ N=90	IL - 9.5	MIX C
HMA SHOULDER REPAIR (FULL DEPTH) BOTTOM LIFTS - HMA BINDER COURSE, IL-19.0, N90	PG 64-22	4.0% @ N=90	IL - 19.0	N/A
HMA SHOULDERS - INTERCHANGE RAMP HMA SURFACE COURSE, IL-9.5L, N30	PG 64-22	4.0% @ N=30	IL - 9.5L	N/A

THE FOLLOWING RATES OF APPLICATION HAVE BEEN USED IN THE CALCULATING PLAN QUANTITIES:

BITUMINOUS MATERIALS (PRIME COAT)	0.05 LBS/SO FT
BITUMINOUS MATERIALS (PRIME COAT)-FOG COAT	0.025 LBS/SO FT
STONE MATRIX HOT-MIX ASPHALT	130 LBS/SO YD/ INCH
HOT-MIX ASPHALT BINDER	112 LBS/SO YD/ INCH
HOT-MIX ASPHALT SHOULDERS	112 LBS/SO YD/ INCH

FILE NAME =	USER NAME = xsauffanrk	DESIGNED -	REVISED -	<b>STATE OF ILLINOIS DEPARTMENT OF TRANSPORTATION</b>	<b>GENERAL NOTES</b>	F.A.I. RTE.	SECTION	COUNTY	TOTAL SHEETS	SHEET NO.
c:\pwwork\pwwork\state\sauffanrk\2010748\074598-ahc\index.dgn	DRAWN -	REVISED -	70			18-46, 18-47RS-2	CUMBERLAND	29	3	
PLOT SCALE = 100.0000' / 1"	CHECKED -	REVISED -	CONTRACT NO. 74598							
Default	DATE -	REVISED -	SCALE: N/A			SHEET 1 OF 1 SHEETS	STA. TO STA.	ILLINOIS FED. AID PROJECT		

SUMMARY OF QUANTITIES			100% STATE		
CODE NO	ITEM	UNIT	TOTAL QUANTITIES	CONSTRUCTION TYPE CODE	
				0005	
28100207	STONE RIPRAP, CLASS A4	TON	41	41	
28200200	FILTER FABRIC	SQ YD	41	41	
40600990	TEMPORARY RAMP	SO YD	448	448	
40603092	HOT-MIX ASPHALT BINDER COURSE, IL-19.0 FG. N90	TON	23654	23654	
40603153	POLYMERIZED HOT-MIX ASPHALT SURFACE COURSE, STONE MATRIX ASPHALT, N80	TON	24405	24405	
40603243	POLYMERIZED HOT-MIX ASPHALT BINDER COURSE, IL-19.0, FG. N90	TON	23654	23654	
40603320	HOT-MIX ASPHALT SURFACE COURSE, MIX "C", N90	TON	1826	1826	
44000157	HOT-MIX ASPHALT SURFACE REMOVAL, 2"	SO YD	135625	135625	
44000175	HOT-MIX ASPHALT SURFACE REMOVAL, 6 1/2"	SO YD	187730	187730	
44004250	PAVED SHOULDER REMOVAL	SQ YD	5000	5000	
44200525	CLASS A PATCHES, TYPE I, 8 INCH	SO YD	40	40	
44200529	CLASS A PATCHES, TYPE II, 8 INCH	SO YD	760	760	
44200533	CLASS A PATCHES, TYPE III, 8 INCH	SO YD	418	418	
44200535	CLASS A PATCHES, TYPE IV, 8 INCH	SO YD	627	627	

SUMMARY OF QUANTITIES			100% STATE		
CODE NO	ITEM	UNIT	TOTAL QUANTITIES	CONSTRUCTION TYPE CODE	
				0005	
44201003	CLASS B PATCHES, TYPE I, 13 INCH	SQ YD	40	40	
44201007	CLASS B PATCHES, TYPE II, 13 INCH	SQ YD	60	60	
48102100	AGGREGATE WEDGE SHOULDER, TYPE B	TON	1734	1734	
48203100	HOT-MIX ASPHALT SHOULDERS	TON	15190	15190	
50800105	REINFORCEMENT BARS	POUND	10431	10431	
60100074	SHOULDER REMOVAL AND REPLACEMENT 8"	FOOT	141544	141544	
60107700	PIPE UNDERDRAINS 6"	FOOT	139198	139198	
60108200	PIPE UNDERDRAINS 6" (SPECIAL)	FOOT	7019	7019	
* 63000001	STEEL PLATE BEAM GUARDRAIL, TYPE A, 6 FOOT POSTS	FOOT	3900	3900	
* 63100089	TRAFFIC BARRIER TERMINAL, TYPE 6B	EACH	4	4	
* 63100167	TRAFFIC BARRIER TERMINAL, TYPE I (SPECIAL) TANGENT	EACH	6	6	
* 63200310	GUARDRAIL REMOVAL	FOOT	4319	4319	
63500105	DELINEATORS	EACH	415	415	

100% STATE

100% STATE

SUMMARY OF QUANTITIES			CONSTRUCTION TYPE CODE		
CODE NO	ITEM	UNIT	TOTAL QUANTITIES	0005	
64200116	SHOULDER RUMBLE STRIPS, 16 INCH	FOOT	69051	69051	
64300450	IMPACT ATTENUATORS (NON-REDIRECTIVE), TEST LEVEL 3	EACH	4	4	
67000400	ENGINEER'S FIELD OFFICE, TYPE A	CAL MO	6	6	
6700600	ENGINEER'S FIELD LABORATORY	CAL MO	6	6	
67100100	MOBILIZATION	L SUM	1	1	
70100420	TRAFFIC CONTROL AND PROTECTION, STANDARD 701411	EACH	4	4	
70100700	TRAFFIC CONTROL AND PROTECTION, STANDARD 701406	L SUM	1	1	
70100800	TRAFFIC CONTROL AND PROTECTION, STANDARD 701401	L SUM	1	1	
70100825	TRAFFIC CONTROL AND PROTECTION, STANDARD 701456	L SUM	1	1	
70103815	TRAFFIC CONTROL SURVEILLANCE	CAL DA	10	10	
70300100	SHORT TERM PAVEMENT MARKING	FOOT	14762	14762	
70300220	TEMPORARY PAVEMENT MARKING - LINE 4"	FOOT	147808	147808	
70300240	TEMPORARY PAVEMENT MARKING - LINE 6"	FOOT	17600	17600	
70300250	TEMPORARY PAVEMENT MARKING - LINE 8"	FOOT	375	375	

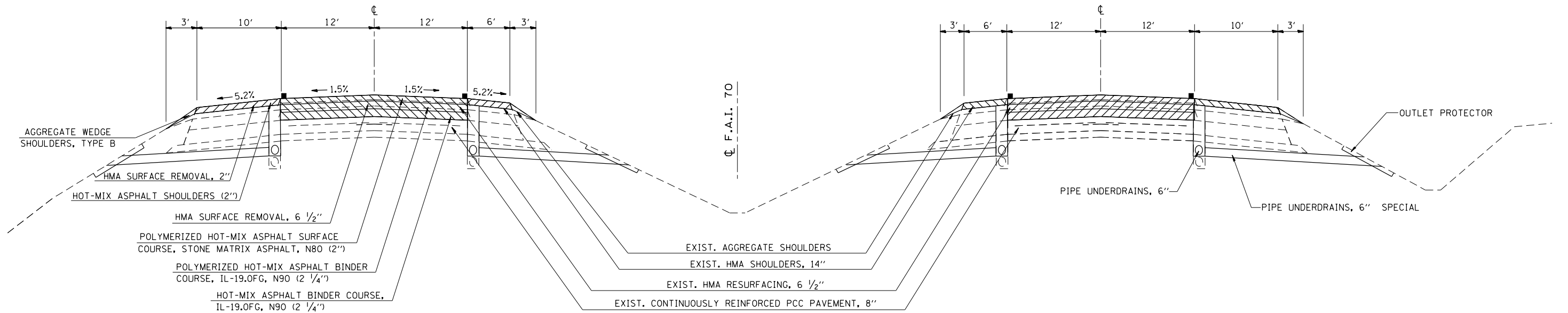
SUMMARY OF QUANTITIES			CONSTRUCTION TYPE CODE		
CODE NO	ITEM	UNIT	TOTAL QUANTITIES	0005	
70300260	TEMPORARY PAVEMENT MARKING - LINE 12"	FOOT	228	228	
70300280	TEMPORARY PAVEMENT MARKING - LINE 24"	FOOT	64	64	
70301000	WORK ZONE PAVEMENT MARKING REMOVAL	SQ FT	4488	4488	
* 78000200	THERMOPLASTIC PAVEMENT MARKING - LINE 4"	FOOT	147808	147808	
* 78000500	THERMOPLASTIC PAVEMENT MARKING - LINE 8"	FOOT	375	375	
* 78000600	THERMOPLASTIC PAVEMENT MARKING - LINE 12"	FOOT	228	228	
* 78000650	THERMOPLASTIC PAVEMENT MARKING - LINE 24"	FOOT	64	64	
* 78004230	PREFORMED PLASTIC PAVEMENT MARKING, TYPE B - INLAID - LINE 6"	FOOT	17600	17600	
* 78100100	RAISED REFLECTIVE PAVEMENT MARKER	EACH	2078	2078	
78200410	GUARDRAIL MARKERS, TYPE A	EACH	56	56	
78201000	TERMINAL MARKER - DIRECT APPLIED	EACH	6	6	
<del>78300200</del>	<del>RAISED REFLECTIVE PAVEMENT MARKER REMOVAL</del>	<del>EACH</del>	<del>2078</del>	<del>2078</del>	
X0322278	RODENT SHIELDS	EACH	293	293	

\* SPECIALTY ITEMS

FILE NAME =	USER NAME = steffennk	DESIGNED -	REVISED -	<b>STATE OF ILLINOIS DEPARTMENT OF TRANSPORTATION</b>	<b>SUMMARY OF QUANTITIES</b>			F.A.I. RTE.	SECTION	COUNTY	TOTAL SHEETS	SHEET NO.
c:\pwork\pvsdot\steffennk\0310740\0744990-ent-500.dgn		DRAWN -	REVISED -		70	118-46, 18-47RS-2	CUMBERLAND	29	5			
PLOT SCALE = 1/8"=1'-0"		CHECKED -	REVISED -		SCALE: N/A SHEET 2 OF 3 SHEETS STA. TO STA.			CONTRACT NO. 74598				
Default		DATE -	REVISED -		ILLINOIS FED. AID PROJECT							



**TYPICAL CROSS SECTION**  
 STA 410+00 TO STA 575+54.38  
 STATION EQUATION  
 STA 80+00 TO STA 292+20

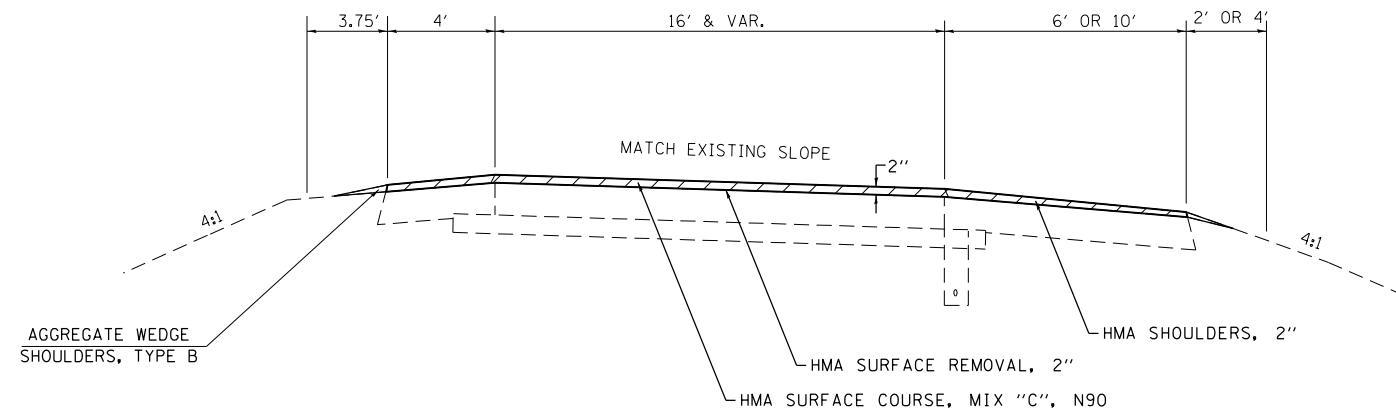


FILE NAME =	USER NAME = steffenmk	DESIGNED -	REVISED -
c:\pwork\work\pwork\stevfenmk\d0310740\074598-sh-typical.dgn		DRAWN -	REVISED -
Default	PLOT SCALE = 100.0000' / 1".	CHECKED -	REVISED -
	PLOT DATE = 6/7/2014	DATE -	REVISED -

**STATE OF ILLINOIS  
 DEPARTMENT OF TRANSPORTATION**

<b>TYPICAL CROSS SECTION</b>			
SCALE: N/A	SHEET 1	OF 1 SHEETS	STA. TO STA.

F.A.I. RTE.	SECTION	COUNTY	TOTAL SHEETS	SHEET NO.
70	(18-46, 18-47)RS-2	CUMBERLAND	29	7
CONTRACT NO. 74598			ILLINOIS FED. AID PROJECT	



**PROPOSED TYPICAL SECTION**

- RAMP A  
STA 188+52 TO STA 200.00
- RAMP B  
STA 214+15 TO STA 200+00
- RAMP C  
STA 389+15 TO STA 400+00
- RAMP D  
STA 400+00 TO STA 413+66.2

FILE NAME =	USER NAME = steffenmk	DESIGNED -	REVISED -
c:\pwork\pwork\stevfenmk\d0310740\074598-sh-typical.dgn		DRAWN -	REVISED -
Default	PLOT SCALE = 100.0000' / in.	CHECKED -	REVISED -
	PLOT DATE = 6/7/2014	DATE -	REVISED -

**STATE OF ILLINOIS  
DEPARTMENT OF TRANSPORTATION**

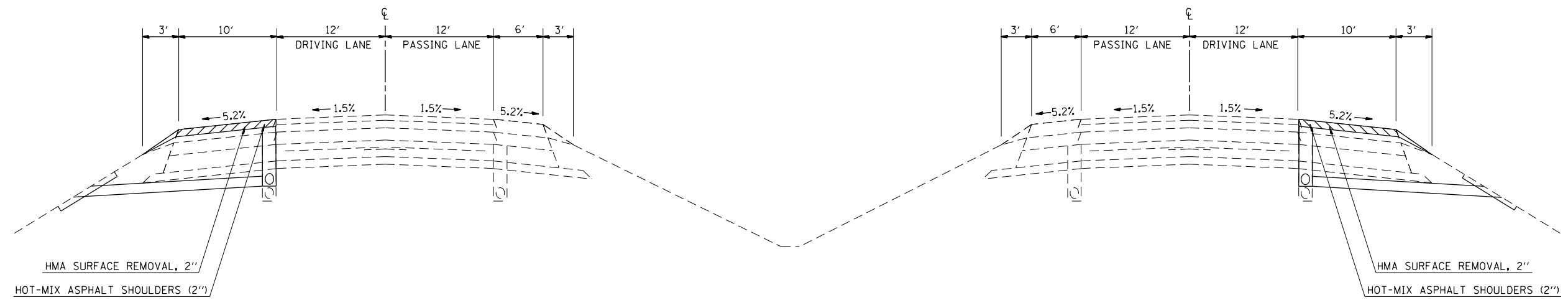
**RAMP TYPICAL**

SCALE: N/A    SHEET 1 OF 1 SHEETS    STA.                      TO STA.

F.A.I. RTE.	SECTION	COUNTY	TOTAL SHEETS	SHEET NO.
70	(18-46, 18-47)RS-2	CUMBERLAND	29	8
CONTRACT NO.			74598	
ILLINOIS FED. AID PROJECT				



PRE-STAGE TYPICAL CROSS SECTION



FILE NAME =	USER NAME = steffenmk	DESIGNED -	REVISED -
ci:\pwork\pwork\dot\stefenmk\d0310740\074598-sh-typical.dgn		DRAWN -	REVISED -
Default	PLOT SCALE = 100.0000' / in.	CHECKED -	REVISED -
	PLOT DATE = 6/7/2014	DATE -	REVISED -

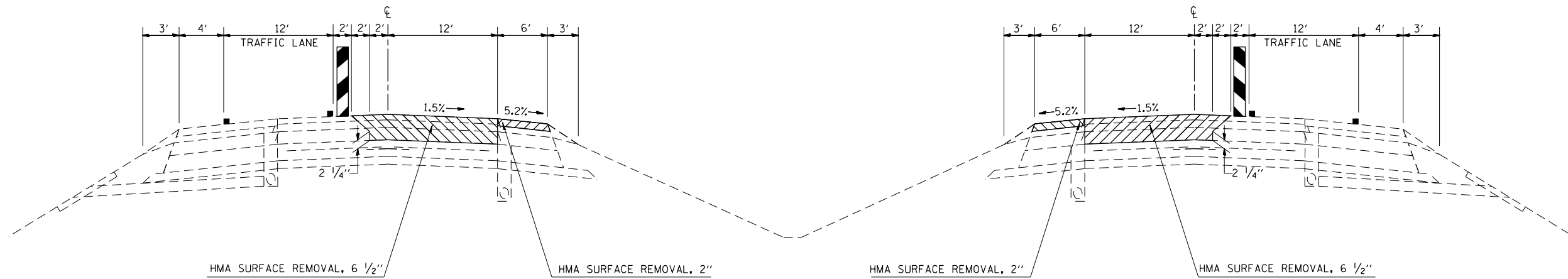
STATE OF ILLINOIS  
DEPARTMENT OF TRANSPORTATION

PRE-STAGE TYPICAL CROSS SECTION

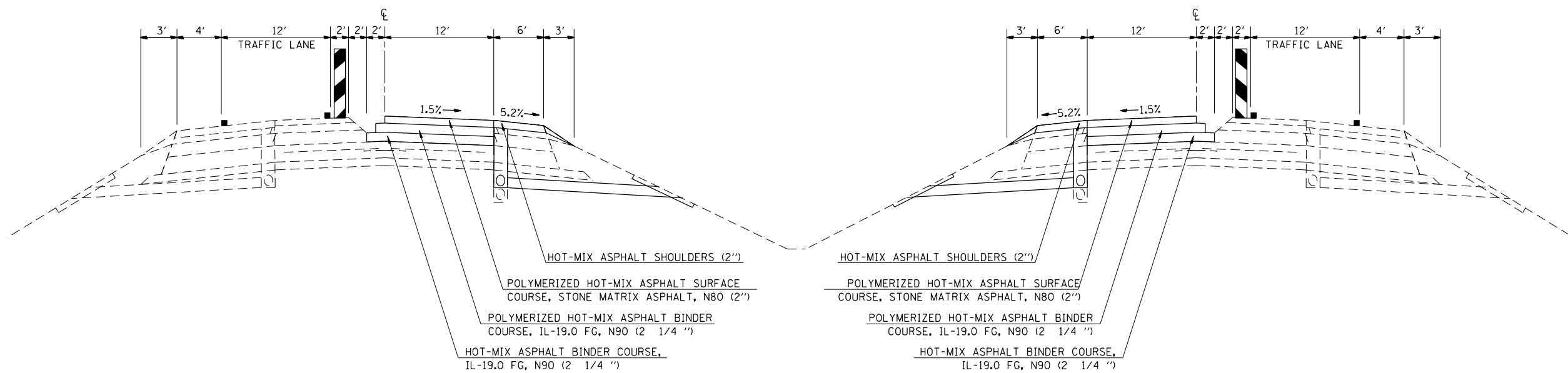
SCALE: N/A SHEET 1 OF 3 SHEETS STA. TO STA.

F.A.I. RTE.	SECTION	COUNTY	TOTAL SHEETS	SHEET NO.
70	(18-46, 18-47)RS-2	CUMBERLAND	29	9
CONTRACT NO. 74598			ILLINOIS FED. AID PROJECT	

STAGE 1A TYPICAL CROSS SECTION



STAGE 1B TYPICAL CROSS SECTION



FILE NAME =	USER NAME = steffenmk	DESIGNED -	REVISED -
c:\pwork\pwork\dot\steffenmk\d0310740\074598-sh-typicals.dgn		DRAWN -	REVISED -
Default	PLOT SCALE = 100.0000' / in.	CHECKED -	REVISED -
	PLOT DATE = 6/7/2014	DATE -	REVISED -

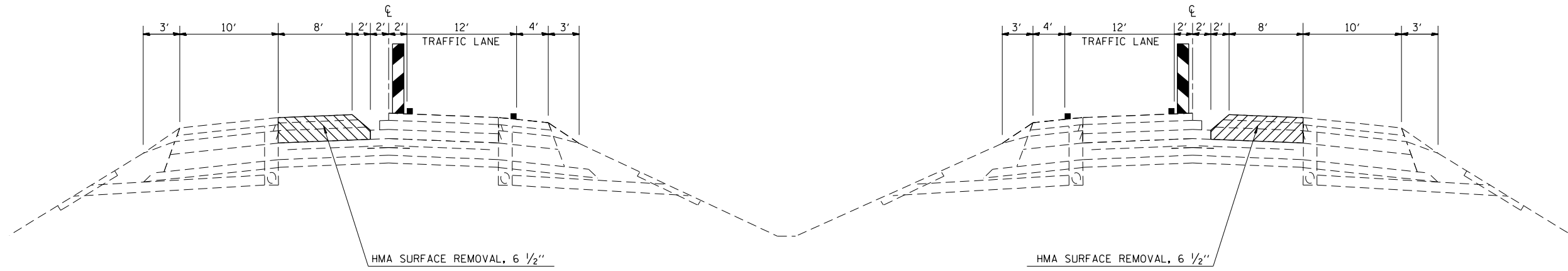
STATE OF ILLINOIS  
DEPARTMENT OF TRANSPORTATION

STAGE I TYPICALS

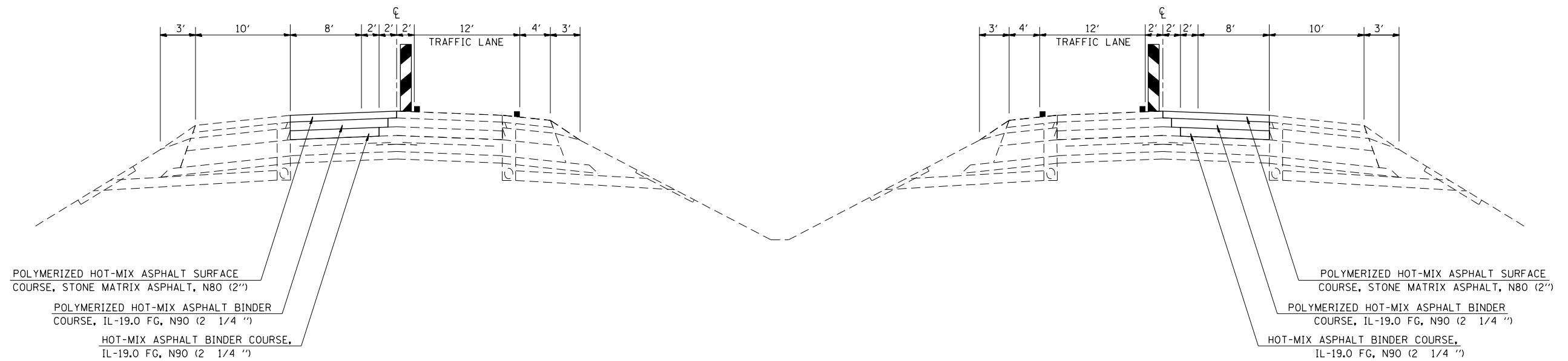
SCALE: N/A SHEET 2 OF 3 SHEETS STA. TO STA.

F.A.I. RTE.	SECTION	COUNTY	TOTAL SHEETS	SHEET NO.
70	(18-46, 18-47)RS-2	CUMBERLAND	29	10
CONTRACT NO. 74598			ILLINOIS FED. AID PROJECT	

STAGE 2A TYPICAL CROSS SECTION



STAGE 2B TYPICAL CROSS SECTION



FILE NAME =	USER NAME = steffenmk	DESIGNED -	REVISED -
c:\pwork\pwork\stevfenmk\d0310740\074598-sh-typical.dgn		DRAWN -	REVISED -
Default	PLOT SCALE = 100.0000' / 1in.	CHECKED -	REVISED -
	PLOT DATE = 6/7/2014	DATE -	REVISED -

STATE OF ILLINOIS  
DEPARTMENT OF TRANSPORTATION

STAGE II TYPICALS

SCALE: N/A SHEET 3 OF 3 SHEETS STA. TO STA.

F.A.I. RTE.	SECTION	COUNTY	TOTAL SHEETS	SHEET NO.
70	(18-46, 18-47)RS-2	CUMBERLAND	29	11
CONTRACT NO. 74598			ILLINOIS FED. AID PROJECT	

PAVING SCHEDULE

		HOT-MIX ASPHALT BINDER COURSE, 1L-19.0 FG, N90	POLYMERIZED HOT-MIX ASPHALT SURFACE COURSE, STONE MATRIX ASPHALT, N80	POLYMERIZED HOT-MIX ASPHALT BINDER COURSE, 1L-19.0 FG, N90	HOT-MIX ASPHALT SURFACE COURSE, MIX "C", N90	HOT-MIX ASPHALT SURFACE REMOVAL, 2"	HOT-MIX ASPHALT SURFACE REMOVAL, 6 1/2"	SHOULDER RUMBLE STRIPS	HOT-MIX ASPHALT SHOULDERS	BITUMINOUS MATERIALS PRIME COAT	AGGREGATE WEDGE SHOULDER, TYPE B	TEMPORARY RAMP	DESCRIPTION
EASTBOUND		QUANTITY	QUANTITY	QUANTITY	QUANTITY	QUANTITY	QUANTITY	QUANTITY	QUANTITY	QUANTITY	QUANTITY	QUANTITY	
STATION TO STATION		( TON)	( TON)	( TON)	( TON)	( SQ YD)	( FOOT)	( TON)	( POUND)	( TON)	( SQ FT)		
410+00.00	575+54.38	5562	5739	5562		29430	44145	16554	3296	33605	276		
80+00.00	119+00.00	1310	1352	1310		6933	10400	3900	777	7917	65		
119+00.00	124+00.00	0	0	0		0	0	0	0	0	0		018-0046 STRUCTURE/RESURF. OMISSION
124+00.00	138+50.00	487	503	487		2578	3867	1450	289	2944	24		
138+50.00	147+50.00	0	0	0		0	0	0	0	0	0		018-0048 STRUCTURE/RESURF. OMISSION
147+50.00	153+75.00	210	217	210		1111	1667	625	124	1269	10		
153+75.00	166+00.00	0	0	0		0	0	0	0	0	0		008-0050 STRUCTURE/RESURF. OMISSION
166+00.00	292+20.00	4240	4375	4240		22436	33653	10620	2513	25619	375		
TOTAL		11810	12185	11810		62488	93732	33149	6999	71353	751		
WESTBOUND		QUANTITY	QUANTITY	QUANTITY					QUANTITY				
STATION TO STATION		( TON)	( TON)	( TON)					( TON)				
410+00.00	575+54.38	5562	5739	5562		29430	44145	16554	3296	33605	276		
80+00.00	118+00.00	1277	1317	1277		6756	10133	3800	757	7714	63		
118+00.00	123+00.00	0	0	0		0	0	500	0	0	0		018-0045 STRUCTURE/RESURF. OMISSION
123+00.00	139+25.00	546	563	546		2889	4333	1625	324	3299	27		
139+25.00	146+75.00	0	0	0		0	0	0	0	0	0		018-0047 STRUCTURE/RESURF. OMISSION
146+75.00	152+75.00	202	208	202		1067	1600	600	119	1218	10		
152+75.00	165+50.00	0	0	0		0	0	1275	0	0	0		008-0049 STRUCTURE/RESURF. OMISSION
165+50.00	292+20.00	4257	4392	4257		22524	33787	11547	2523	25720	376		
TOTAL		11844	12220	11844		62666	93998	35901	7019	71556	753		
MEDIAN CROSSOVER													
STATION													
101+50.00						241			27	6	3		
242+00.00						241			27	6	3		
TOTAL						483	0	0	54	12	6		
RAMPS													
STATION TO STATION													
188+52.32	200+00.00				404	1738			195	2015	50	112	NE RAMP A
200+00.00	214+15.51				411	3275			199	2390	61	112	NW RAMP B
389+15.00	400+52.00				603	1776			358	2821	63	112	SW RAMP C
400+00.00	413+66.62				408	3200			367	2358	50	112	SE RAMP D
TOTAL					1826	9990	0	0	1119	9584	224	448	
GRAND TOTALS		23654	24405	23654	1826	135626	187730	69051	15190	152506	1734	448	

PAVEMENT MARKING SCHEDULE

		WORK ZONE PAVEMENT MARKING REMOVAL	SHORT-TERM PAVEMENT MARKING				WORK ZONE PAVEMENT MARKING REMOVAL		THERMOPLASTIC PAVEMENT MARKING, 4 INCH	THERMOPLASTIC PAVEMENT MARKING, 8 INCH	THERMOPLASTIC PAVEMENT MARKING, 12 INCH	THERMOPLASTIC PAVEMENT MARKING, 24 INCH	GROOVING FOR RECESSED PAVEMENT MARKING, 5"	GROOVING FOR RECESSED PAVEMENT MARKING, 9"	GROOVING FOR RECESSED PAVEMENT MARKING, 13"	GROOVING FOR RECESSED PAVEMENT MARKING, 25"	PREFORMED PLASTIC PAVEMENT MARKING, TYPE B - INLAID - LINE 6"	RAISED REFLECTIVE PAVEMENT MARKER		DESCRIPTION
				EDGE LINE				EDGE LINE								CENTER LINE				
EASTBOUND		LENGTH	CENTERLINE	WHITE	YELLOW	(SQ FT)	(SQ FT)	WHITE	YELLOW							WHITE	CRYSTAL	AMBER		
STATION TO STATION		(FOOT)	(FOOT)	(FOOT)	(FOOT)	(SQ FT)	(SQ FT)	(FOOT)	(FOOT)							(FOOT)	(EACH)	(EACH)		
410+00.00	575+54.38	16554.38	1655.438	662	662	546	437	16554	16554			33109				4139	414			
80+00.00	119+00.00	3900.00	390	156	156	129	103	3900	3900			7800				975	98			
119+00.00	124+00.00	500.00	0	0	0	17	13	0	0			0				0	0		018-0046 STRUCTURE/RESURF. OMISSION	
124+00.00	138+50.00	1450.00	145	58	58	48	38	1450	1450			2900				363	36			
138+50.00	147+50.00	900.00	0	0	0	30	24	0	0			0				0	0		018-0048 STRUCTURE/RESURF. OMISSION	
147+50.00	153+75.00	625.00	62.5	25	25	21	17	625	625			1250				156	16			
153+75.00	166+00.00	1225.00	0	0	0	40	32	0	0			0				0	0		008-0050 STRUCTURE/RESURF. OMISSION	
166+00.00	185+47.00	1947.00	194.7	78	78	64	51	1947	1947			3894				487	49			
185+47.00	194+97.00	950.00	0	0	0	31	25	0	950			950				238	24		RAMP OMISSION	
194+97.00	213+25.00	1828.00	182.8	73	73	60	48	1828	1828			3656				457	46			
213+25.00	223+75.00	1050.00	0	0	0	35	28	0	1050			1050				263	26		RAMP OMISSION	
223+75.00	292+20.00	6845.00	684.5	274	274	226	181	6845	6845			13690				1711	171			
TOTAL		37774.38	3314.938	1326	1326	1247	997	33149	35149			68299				8787	879			
WESTBOUND		LENGTH	CENTERLINE	WHITE	YELLOW	(SQ FT)	(SQ FT)	WHITE	YELLOW							WHITE	CRYSTAL	AMBER		
STATION TO STATION		(FOOT)	(FOOT)	(FOOT)	(FOOT)	(SQ FT)	(SQ FT)	(FOOT)	(FOOT)							(FOOT)	(EACH)	(EACH)		
410+00.00	575+54.38	16554.38	1655.438	662	662	546	437	16554	16554			33109				4139	414			
80+00.00	118+00.00	3800.00	380	152	152	125	100	3800	3800			7600				950	95			
118+00.00	123+00.00	500.00	0	0	0	17	13	0	0			0				0	0		018-0045 STRUCTURE/RESURF. OMISSION	
123+00.00	139+25.00	1625.00	162.5	65	65	54	43	1625	1625			3250				406	41			
139+25.00	146+75.00	750.00	0	0	0	25	20	0	0			0				0	0		018-0047 STRUCTURE/RESURF. OMISSION	
146+75.00	152+75.00	600.00	60	24	24	20	16	600	600			1200				150	15			
152+75.00	165+50.00	1275.00	0	0	0	42	34	0	0			0				0	0		008-0049 STRUCTURE/RESURF. OMISSION	
165+50.00	186+88.00	2138.00	213.8	86	86	71	56	2138	2138			4276				535	53			
186+88.00	193+49.00	661.00	0	0	0	22	17	0	661			661				165	17		RAMP OMISSION	
193+49.00	216+32.00	2283.00	228.3	91	91	75	60	2283	2283			4566				571	57			
216+32.00	220+94.00	462.00	0	0	0	15	12	0	462			462				116	12		RAMP OMISSION	
220+94.00	292+20.00	7126.00	712.6	285	285	235	188	7126	7126			14252				1782	178			
TOTAL		37774.38	3412.638	1365	1365	1247	997	34126	35249			69376				8812	881			
RAMPS		LENGTH	CENTERLINE	WHITE	YELLOW	(SQ FT)	(SQ FT)	WHITE	YELLOW							WHITE	CRYSTAL	AMBER		
STATION TO STATION		(FOOT)	(FOOT)	(FOOT)	(FOOT)	(SQ FT)	(SQ FT)	(FOOT)	(FOOT)							(FOOT)	(EACH)	(EACH)		
188+52.32	200+00.00	1147.68						1148	1148	190	116	32	2295	190	116	32	56	13		NE RAMP A
200+00.00	214+15.51	1415.51						1416	1416				2831				32	16		NW RAMP B
389+15.00	400+52.00	1137.00						1137	1137	185	112	32	2274	185	112	32	73	11		SW RAMP C
400+00.00	413+66.62	1366.62						1367	1367				2733				96	21		SE RAMP D
TOTAL		5067	0	0	0	0	0	5067	5067	375	228	64	10134	375	228	64	0	257	61	
			6728	2691	2691	2493	1994	72343	75466	375	228	64	147808	375	228	64	17600	2017	61	
			12110		4488		147808										2078			

GUARDRAIL SCHEDULE

STATION TO STATION				STEEL PLATE BEAM GUARD RAIL, TYPE A, 6 FOOT POSTS	TRAFFIC BARRIER TERMINAL, TYPE 6B	TRAFFIC BARRIER TERMINAL TYPE T, SPECIAL (TANGENT)	GUARDRAIL MARKER, TYPE A	GUARDRAIL REMOVAL	TERMINAL MARKER - DIRECT APPLIED
EASTBOUND I-70				FT	EACH	EACH	EACH	FT	EACH
RT STA	479+14.25	TO	RT STA	481+51.75	237.5	1	4	238	1
RT STA	101+00.00	TO	RT STA	116+00.00	1450	1	19	1500	1
RT STA	200+34.25	TO	RT STA	204+78.00	337.5	1	6	444	1
WESTBOUND I-70				FT	EACH	EACH	EACH	FT	EACH
RT STA	482+12.00	TO	RT STA	485+43.25	225	1	4	331	1
RT STA	114+00.00	TO	RT STA	117+00.00	300		4	300	
RT STA	162+79	TO	RT STA	173+29	1000	1	13	1050	1
RT STA	204+54	TO	RT STA	209+10	350	1	6	456	1
TOTALS:				3900	4	6	56	4319	6

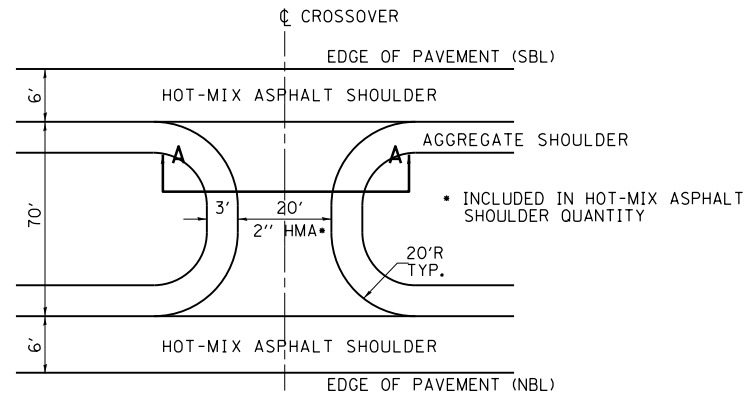
RIPRAP SCHEDULE

STRUCTURE NUMBER	QUANTITY TON
SN 018-8616	22
SN 018-8617	18.7

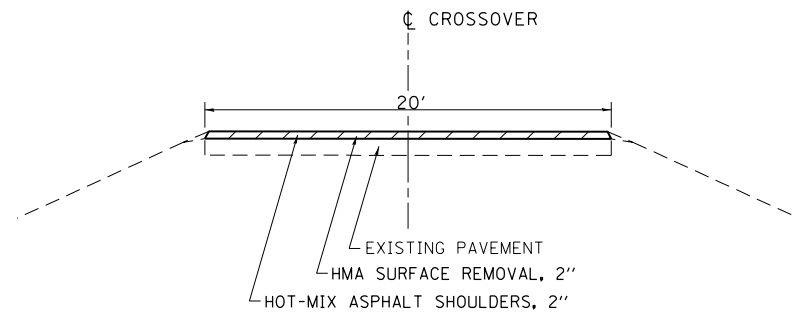
LARGE SCOUR HOLE ON NORTH END OF EACH CULVERT. ADD RIPRAP TO THESE AREAS.

PIPE UNDERDRAIN SCHEDULE

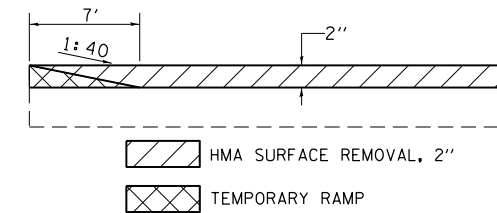
STATION		LENGTH (FEET)	PIPE UNDERDRAINS 6" (FEET)	PIPE UNDERDRAINS 6" (SPECIAL) (FEET)	SHOULDER REMOVAL AND REPLACEMENT 8" (FEET)	REINFORCING BARS (POUND)	CLASS SI CONCRETE (MISCELLANEOUS) (CU YD)	RODENT SHIELDS (EACH)	CONCRETE HEADWALL REMOVAL SPECIAL (EACH)
EASTBOUND									
410+00	575+54	16554	33109	1677	33669	2492	105	70	70
575+54	80+00	0	STATION EQUATION						
80+00	119+00	3900	7800	313	7906	463	20	13	13
119+00	124+00	500	OMISSION						
124+00	138+50	1450	2900	192	2964	285	12	8	8
138+50	147+50	900	OMISSION						
147+50	153+75	625	1250	96	1282	142	6	4	4
153+75	166+00	1225	OMISSION						
166+00	190+50	2450	4900	240	4980	356	15	10	10
190+50	195+00	450	450	22	456	36	2	1	1
195+00	212+75	1775	3550	192	3614	285	12	8	8
212+75	214+50	175	175	0	175	0	0	0	0
214+50	292+20	7770	15540	792	15806	1175	50	33	33
EASTBOUND TOTAL			69674	3522	70852	5233	221	147	147
WESTBOUND									
410+00	575+54	16554	33109	1677	33669	2492	105	70	70
575+54	80+00	0	STATION EQUATION						
80+00	118+00	3800	7600	313	7706	463	20	13	13
118+00	123+00	500	OMISSION						
123+00	139+25	1625	3250	192	3314	285	12	8	8
139+25	146+75	750	OMISSION						
146+75	152+75	600	1200	96	1232	142	6	4	4
152+75	165+50	1275	OMISSION						
165+50	190+50	2500	5000	240	5080	356	15	10	10
190+50	198+50	800	800	44	812	71	3	2	2
198+50	215+25	1675	3350	169	3408	249	11	7	7
215+25	217+00	175	175	0	175	0	0	0	0
217+00	292+20	7520	15040	766	15296	1139	48	32	32
WESTBOUND TOTAL			69524	3497	70692	5198	219	146	146
JOB TOTAL			139198	7019	141544	10431	440	293	293



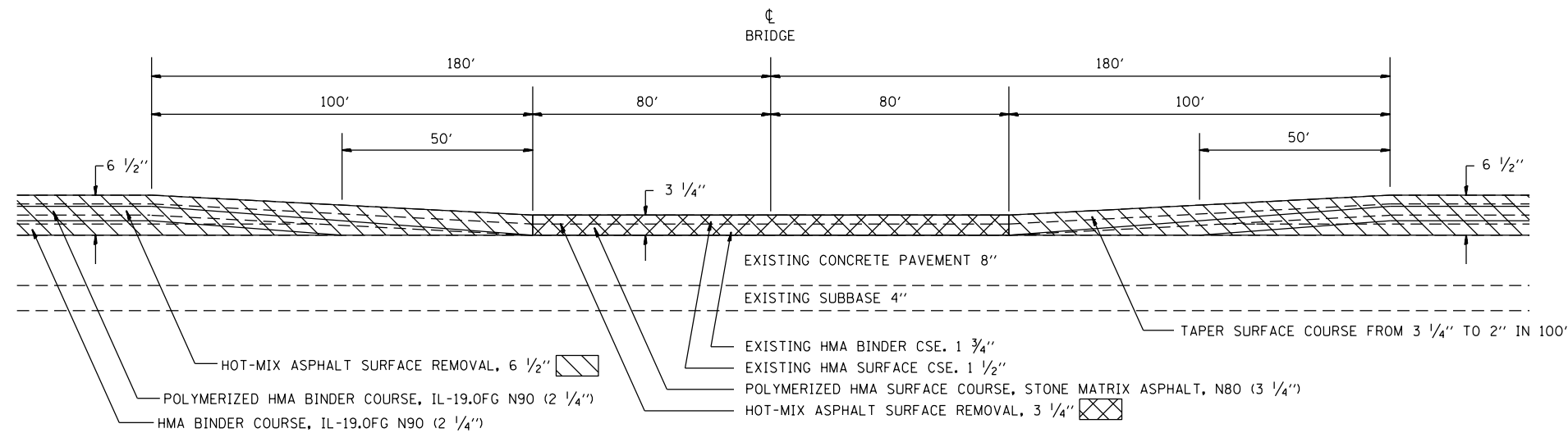
DETAIL OF MEDIAN CROSSOVER



SECTION A-A  
STA 101+50  
STA 242+00



TEMPORARY RAMP DETAIL AT RAMP



DETAIL OF HMA RUNDOWN  
SN 018-0031 STA 482+10  
SN 018-0025 STA 204+65.76

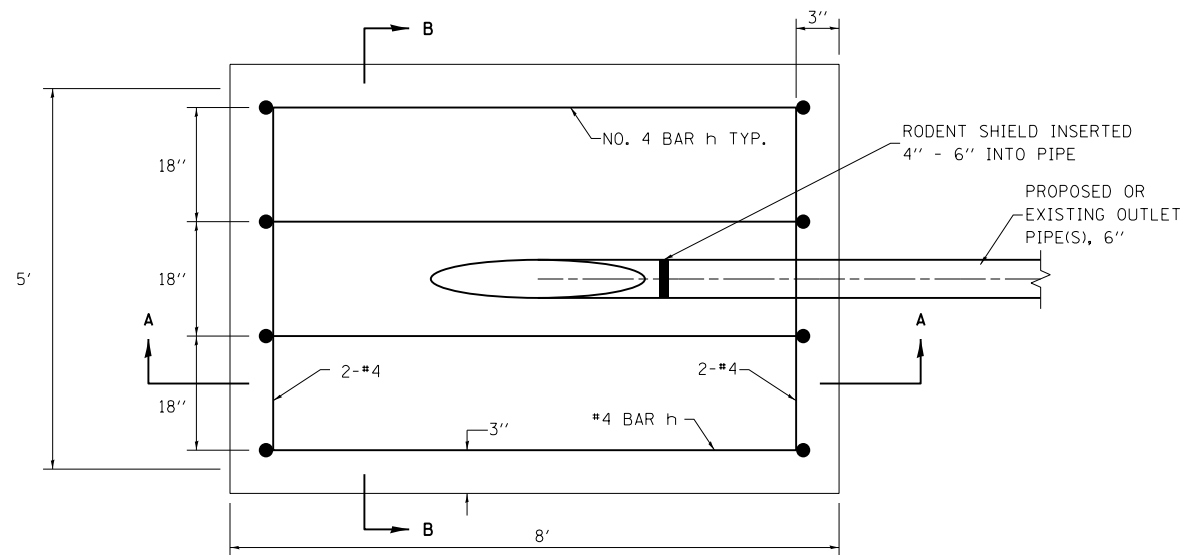
FILE NAME =	USER NAME = steffenmk	DESIGNED -	REVISED -
c:\pwork\pwork\stevfenmk\d0310740\074598-shd-details.dgn		DRAWN -	REVISED -
Default	PLOT SCALE = 100.0000' / 1in.	CHECKED -	REVISED -
	PLOT DATE = 6/7/2014	DATE -	REVISED -

STATE OF ILLINOIS  
DEPARTMENT OF TRANSPORTATION

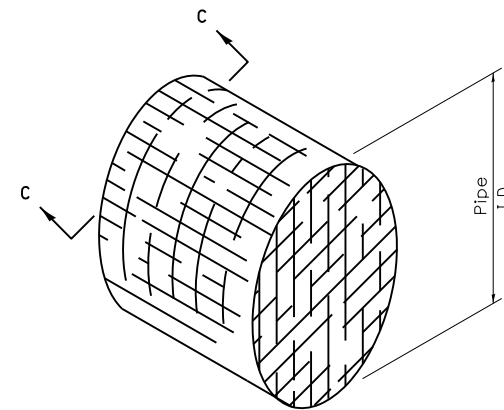
DETAILS

SCALE: N/A SHEET 1 OF 1 SHEETS STA. TO STA.

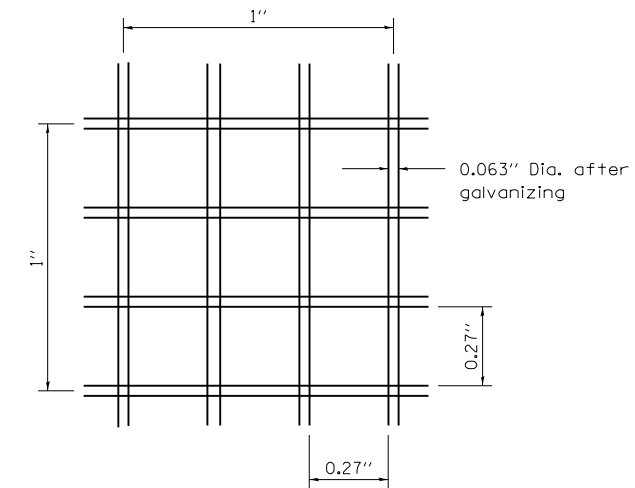
F.A.I. RTE.	SECTION	COUNTY	TOTAL SHEETS	SHEET NO.
70	(18-46, 18-47)RS-2	CUMBERLAND	29	15
CONTRACT NO. 74598			ILLINOIS FED. AID PROJECT	



PLAN VIEW



DETAIL OF RODENT SHIELD



SECTION C-C

**NOTES**

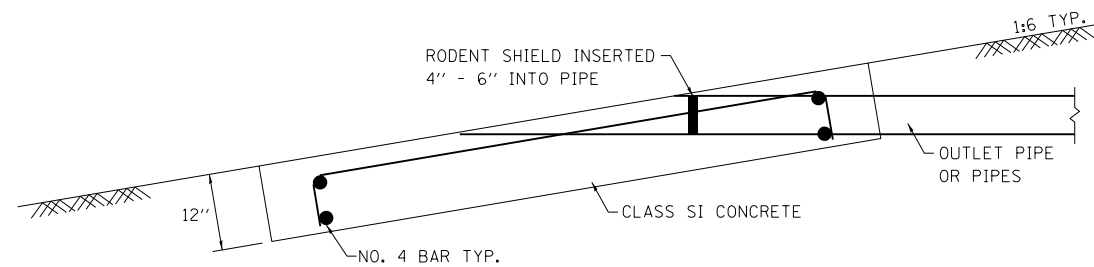
The outlet pipe or pipes shall be located as close as possible to the center of the outlet protector.

The last 10' of outlet pipe shall be schedule 40 PVC.

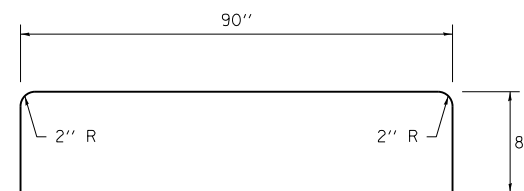
The rebars may be cut or relocated to accommodate pipe.

Cut outlet pipe on a bevel to match finished surface of surrounding PCC.

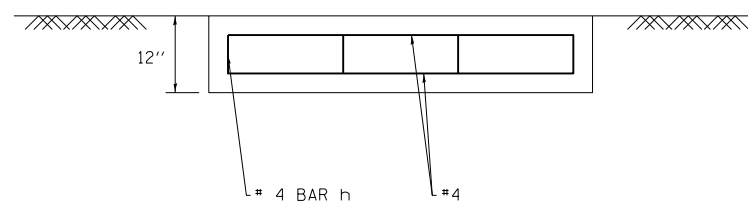
Seeding Class 2 shall be considered included in the cost of the pay items.



SECTION A-A



#4 h BAR



SECTION B-B

**OUTLET PROTECTOR BILL OF MATERIALS**

PAY ITEM	UNIT	QUANTITY (EACH OUTLET PROTECTOR)
CLASS SI CONCRETE (MISCELLANEOUS)	CU YD	1.5
REINFORCING BARS	LB	35.6
RODENT SHIELDS	EACH	1

FILE NAME =	USER NAME = steffenmk	DESIGNED -	REVISED -
ci:\pw\work\p\idot\steffenmk\d0310740\074598-sht-district_standards.dgn		DRAWN -	REVISED -
	PLOT SCALE = 2.0000' / in.	CHECKED -	REVISED -
	PLOT DATE = 6/7/2014	DATE -	REVISED -

STATE OF ILLINOIS  
DEPARTMENT OF TRANSPORTATION

OUTLET PROTECTOR

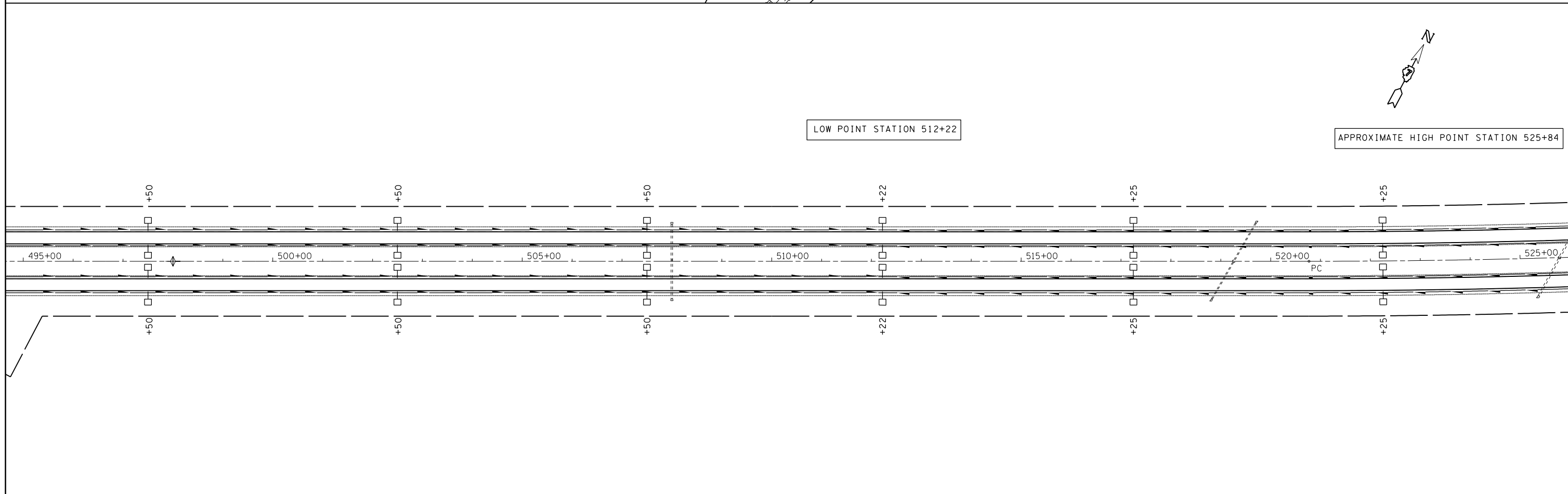
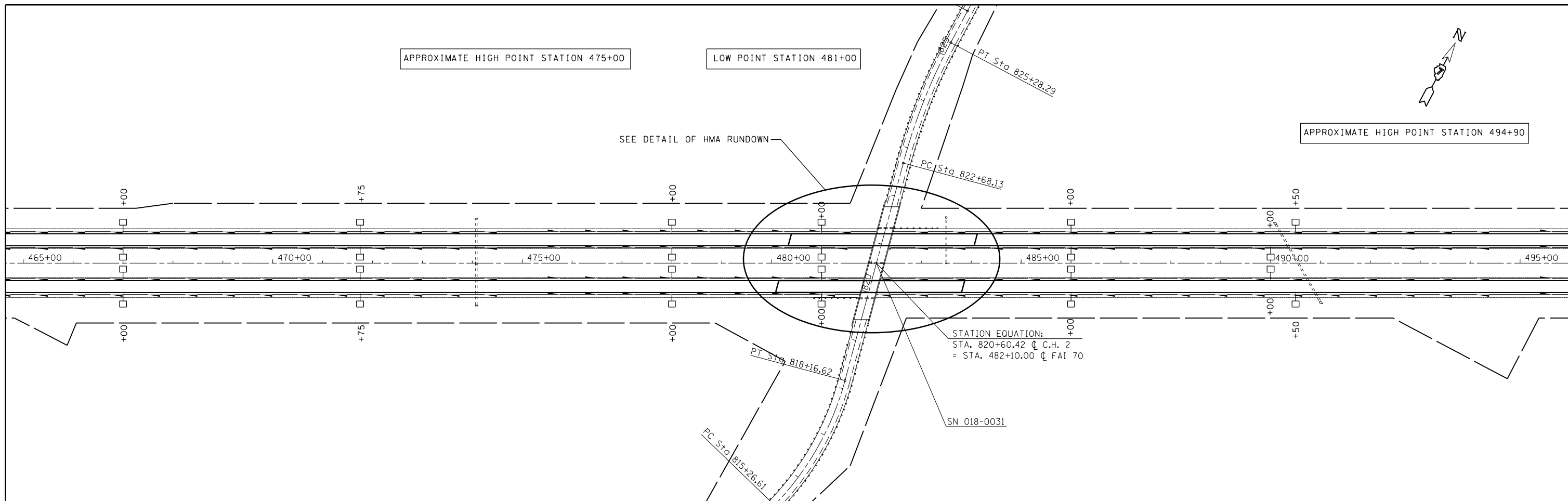
SCALE: N/A SHEET NO. 1 OF 1 SHEETS STA. TO STA.

**DISTRICT 7 DETAIL NO. 601101A**

F.A.I. RTE.	SECTION	COUNTY	TOTAL SHEETS	SHEET NO.
70	(18-46, 18-47)RS-2	CUMBERLAND	29	16
				CONTRACT NO. 74598
ILLINOIS FED. AID PROJECT				







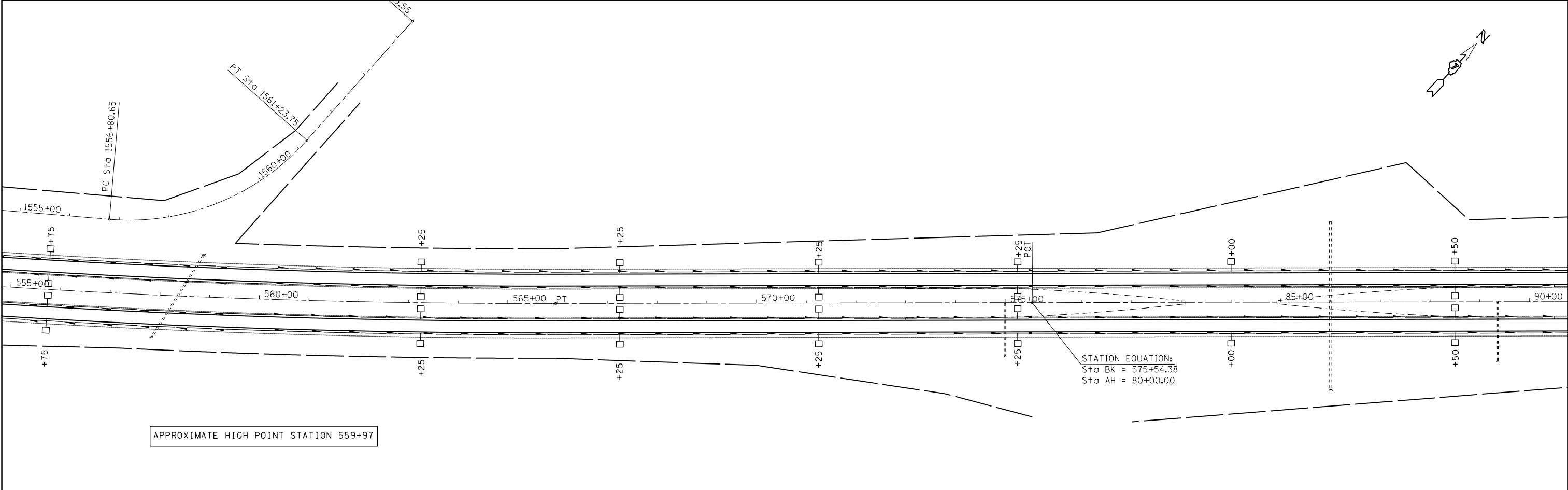
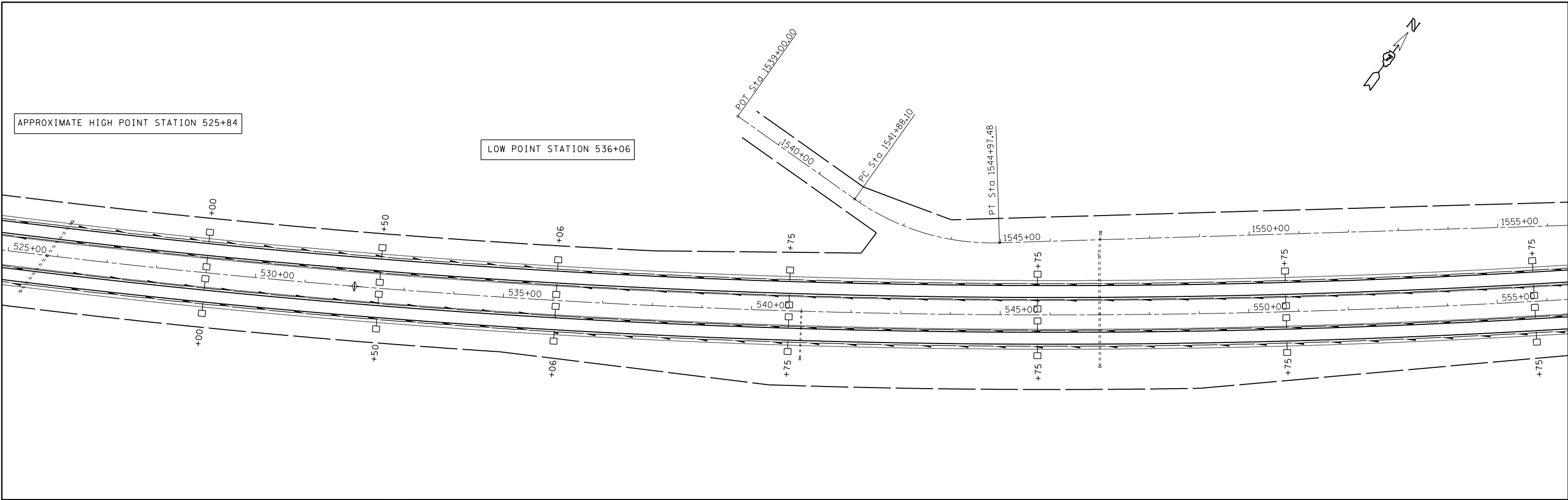
FILE NAME =	USER NAME = steffenmk	DESIGNED -	REVISED -
c:\pwork\pwork\dot\steffenmk\d0310740\074598-sh-t-plan.dgn		DRAWN -	REVISED -
Default	PLOT SCALE = 200.0000' / in.	CHECKED -	REVISED -
	PLOT DATE = 6/7/2014	DATE -	REVISED -

**STATE OF ILLINOIS  
DEPARTMENT OF TRANSPORTATION**

**PLAN SHEET  
STA. 465 + 00 TO STA. 525 + 00**

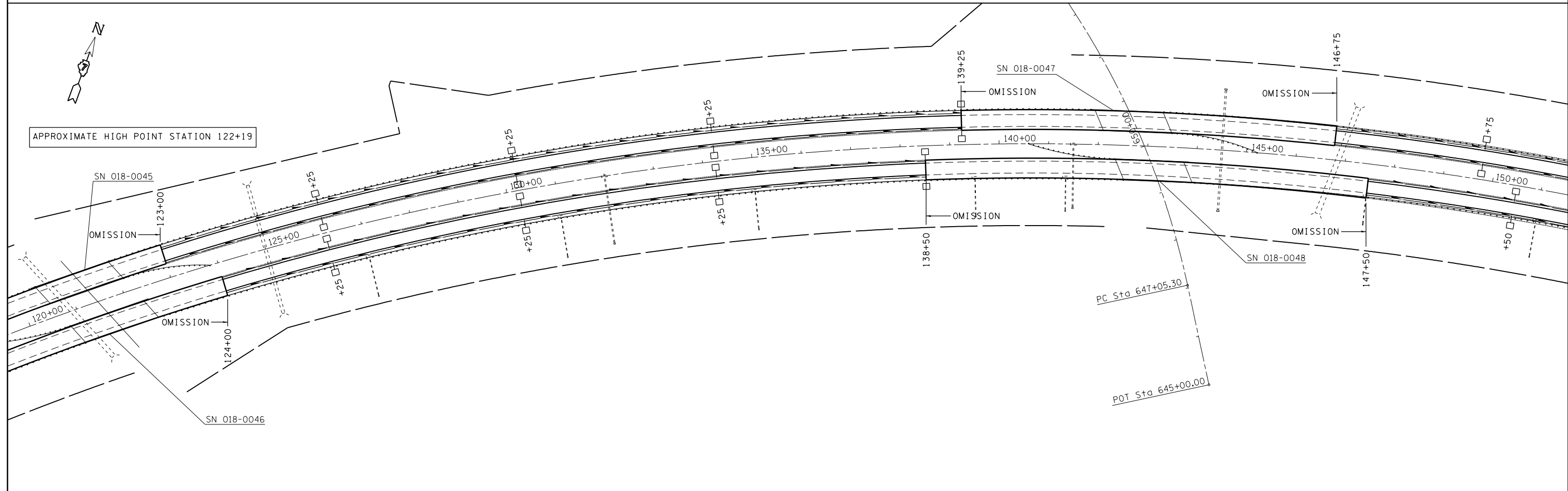
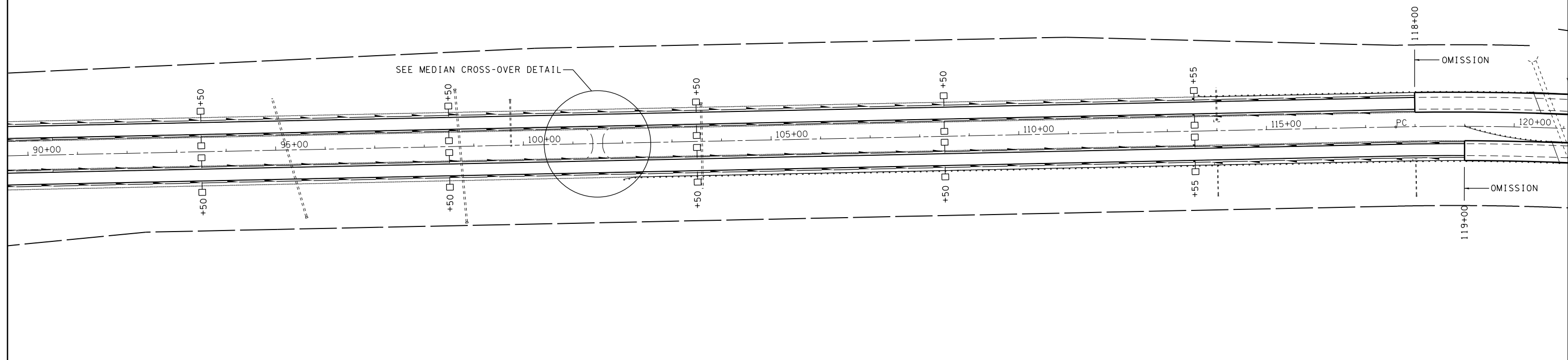
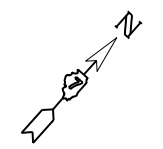
SCALE: 100      SHEET 2 OF 8 SHEETS      STA.      TO STA.

F.A.I. RTE.	SECTION	COUNTY	TOTAL SHEETS	SHEET NO.
70	(18-46, 18-47)RS-2	CUMBERLAND	29	18
CONTRACT NO. 74598			ILLINOIS FED. AID PROJECT	



FILE NAME = c:\pwork\pwork\stefjenk\d0310740\074598-sh-t-plan.dgn	USER NAME = stefjenk	DESIGNED -	REVISED -	<b>STATE OF ILLINOIS DEPARTMENT OF TRANSPORTATION</b>	<b>PLAN SHEET</b>			F.A.I. R.T.E.	SECTION	COUNTY	TOTAL SHEETS	SHEET NO.
	PLOT SCALE = 200.0000' / in.	CHECKED -	REVISED -		<b>STA. 525 + 00 TO STA. 90 + 00</b>			70	(18-46, 18-47)RS-2	CUMBERLAND	29	19
Default	PLOT DATE = 6/7/2014	DATE -	REVISED -	SCALE: 100	SHEET 3	OF 8 SHEETS	STA.	TO STA.	CONTRACT NO. 74598			
ILLINOIS FED. AID PROJECT												

LOW POINT STATION 113+55



FILE NAME =	USER NAME = steffenmk	DESIGNED -	REVISED -
ei:\pwork\pwork\stevfenmk\d0310740\074598-sh-t-plan.dgn		DRAWN -	REVISED -
Default	PLOT SCALE = 200.0000' / in.	CHECKED -	REVISED -
	PLOT DATE = 6/7/2014	DATE -	REVISED -

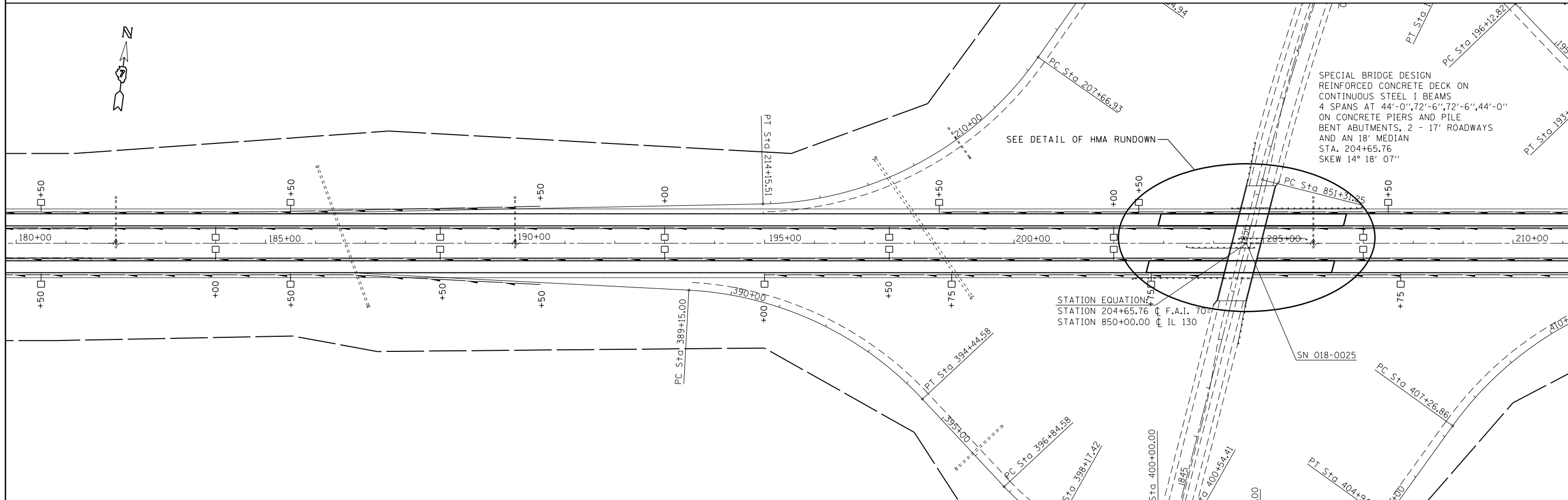
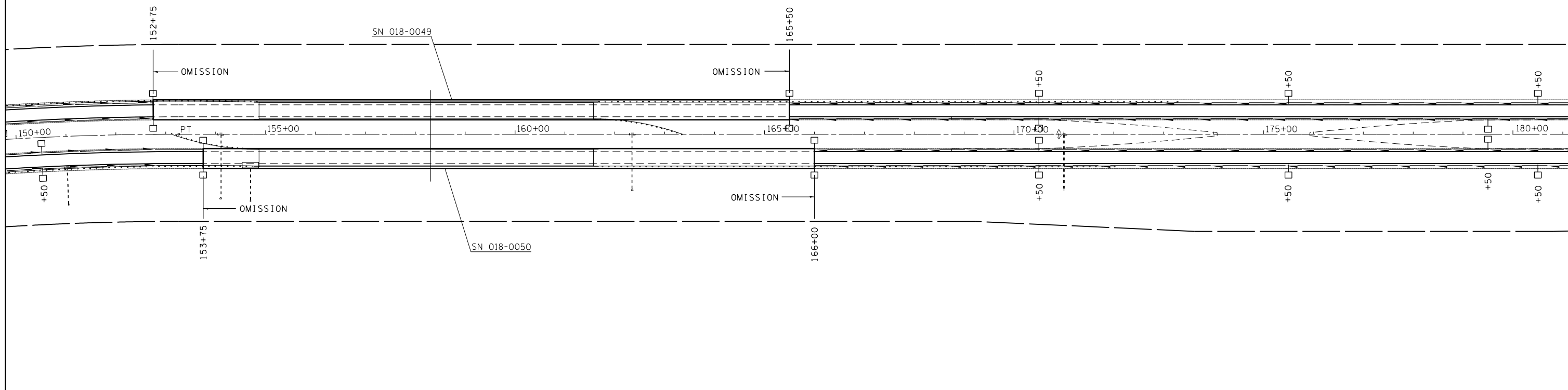
**STATE OF ILLINOIS  
DEPARTMENT OF TRANSPORTATION**

**PLAN SHEET  
STA. 90+00 TO STA. 150+00**

SCALE: 100      SHEET 4 OF 8 SHEETS      STA.      TO STA.

F.A.I. RTE.	SECTION	COUNTY	TOTAL SHEETS	SHEET NO.
70	(18-46, 18-47)RS-2	CUMBERLAND	29	20
			CONTRACT NO. 74598	
ILLINOIS FED. AID PROJECT				

LOW POINT STATION 162+56



FILE NAME =  
 c:\pwork\pwork\steffenmk\d0310740\074598-shr-plan.dgn  
 Default

USER NAME = steffenmk  
 74598-shr-plan.dgn  
 PLOT SCALE = 200.0000' / in.  
 PLOT DATE = 6/7/2014

DESIGNED -  
 DRAWN -  
 CHECKED -  
 DATE -

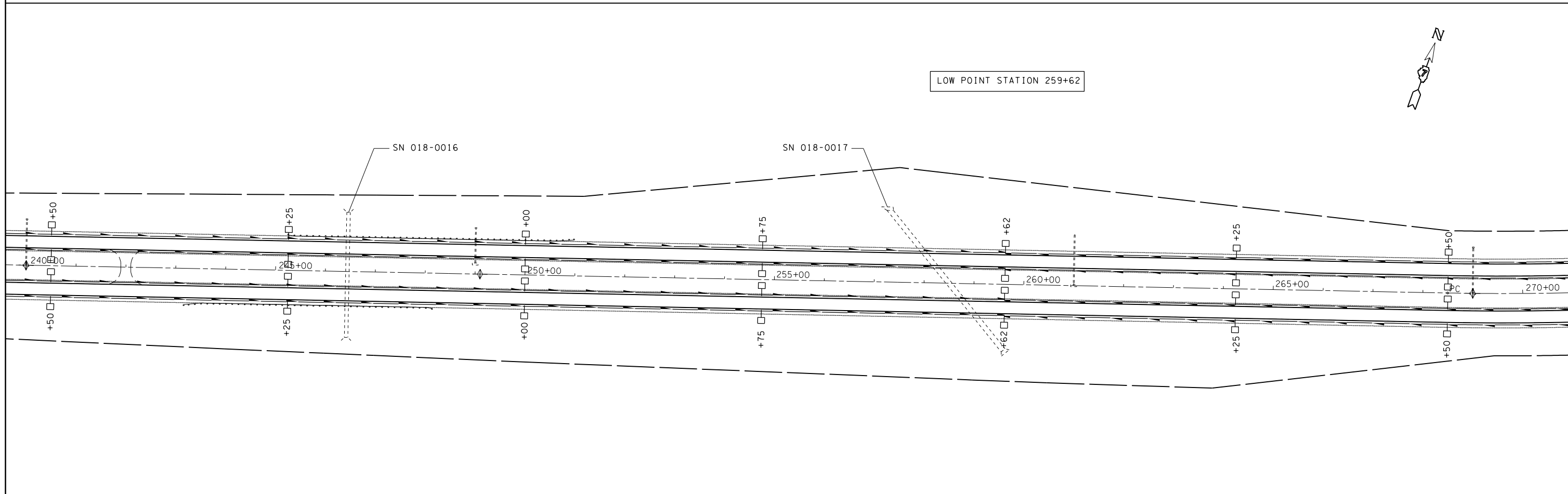
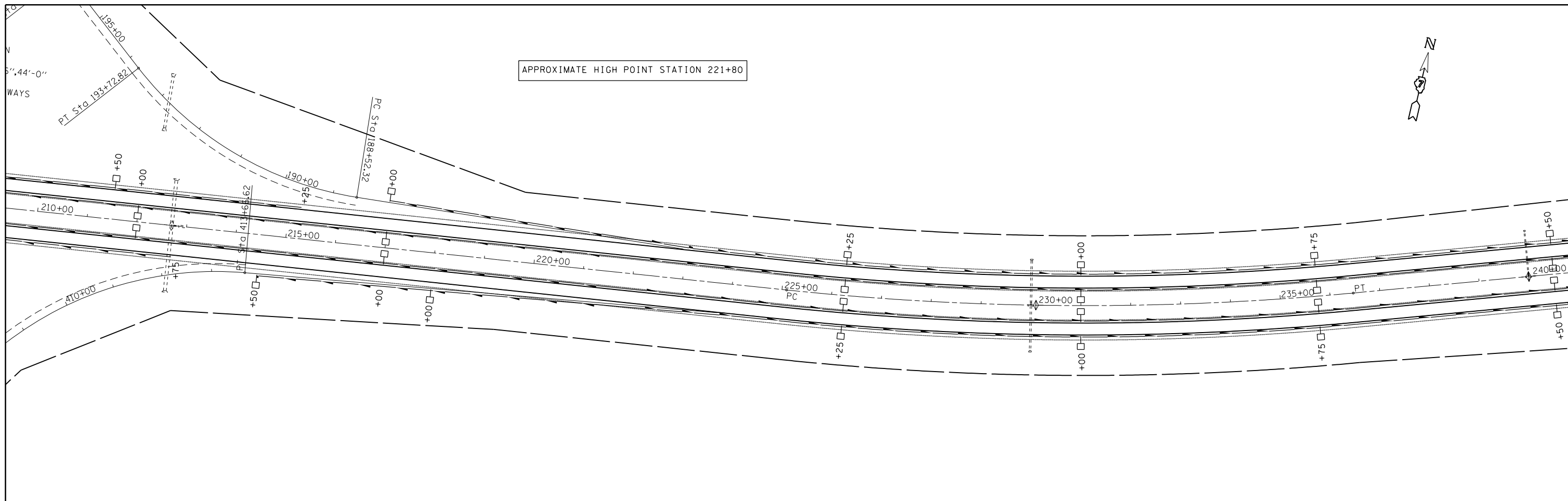
REVISED -  
 REVISED -  
 REVISED -  
 REVISED -

**STATE OF ILLINOIS  
 DEPARTMENT OF TRANSPORTATION**

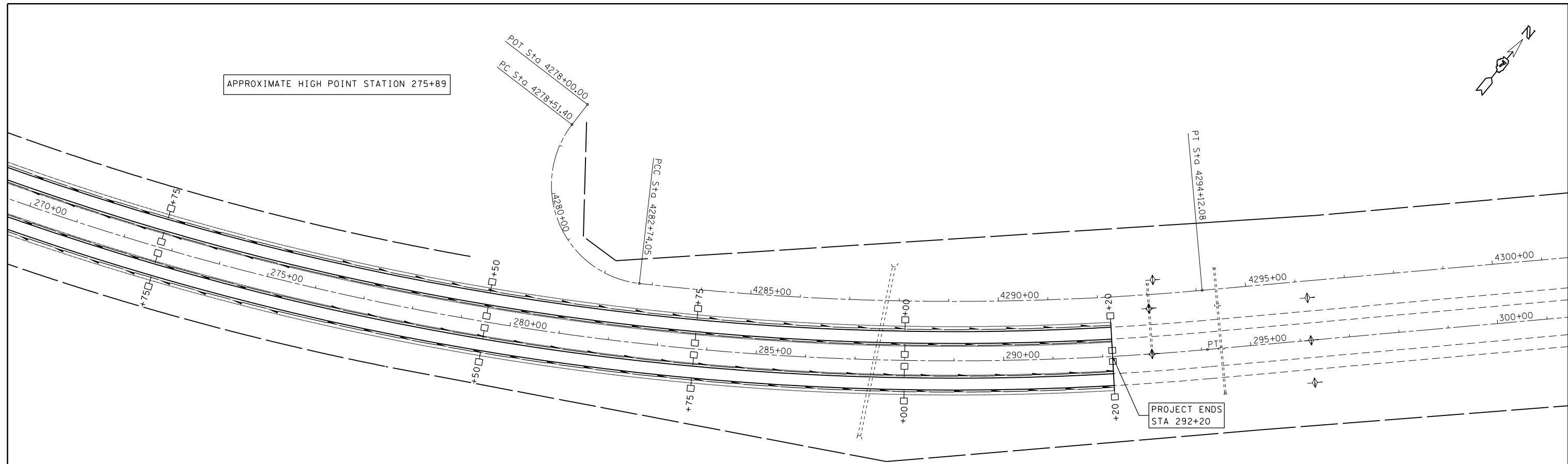
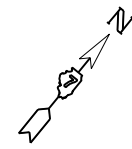
**PLAN SHEET**  
**STA. 150+00 TO STA. 210+00**

SCALE: 100      SHEET 5 OF 8 SHEETS      STA.      TO STA.

F.A.I. RTE.	SECTION	COUNTY	TOTAL SHEETS	SHEET NO.
70	(18-46, 18-47)RS-2	CUMBERLAND	29	21
CONTRACT NO. 74598			ILLINOIS FED. AID PROJECT	



FILE NAME = c:\pw\work\p\midot\steffenmk\d0310740\074598-sht-plan.dgn	USER NAME = steffenmk	DESIGNED -	REVISED -	<b>STATE OF ILLINOIS DEPARTMENT OF TRANSPORTATION</b>	<b>PLAN SHEET</b>			F.A.I. RE.	SECTION	COUNTY	TOTAL SHEETS	SHEET NO.
	PLOT SCALE = 200.0000' / in.	CHECKED -	REVISED -		<b>STA. 210+00 TO STA. 270+00</b>			70	(18-46, 18-47)RS-2	CUMBERLAND	29	22
Default	PLOT DATE = 6/7/2014	DATE -	REVISED -	SCALE: 100	SHEET 6	OF 8	SHEETS	STA.	TO STA.	ILLINOIS FED. AID PROJECT CONTRACT NO. 74598		



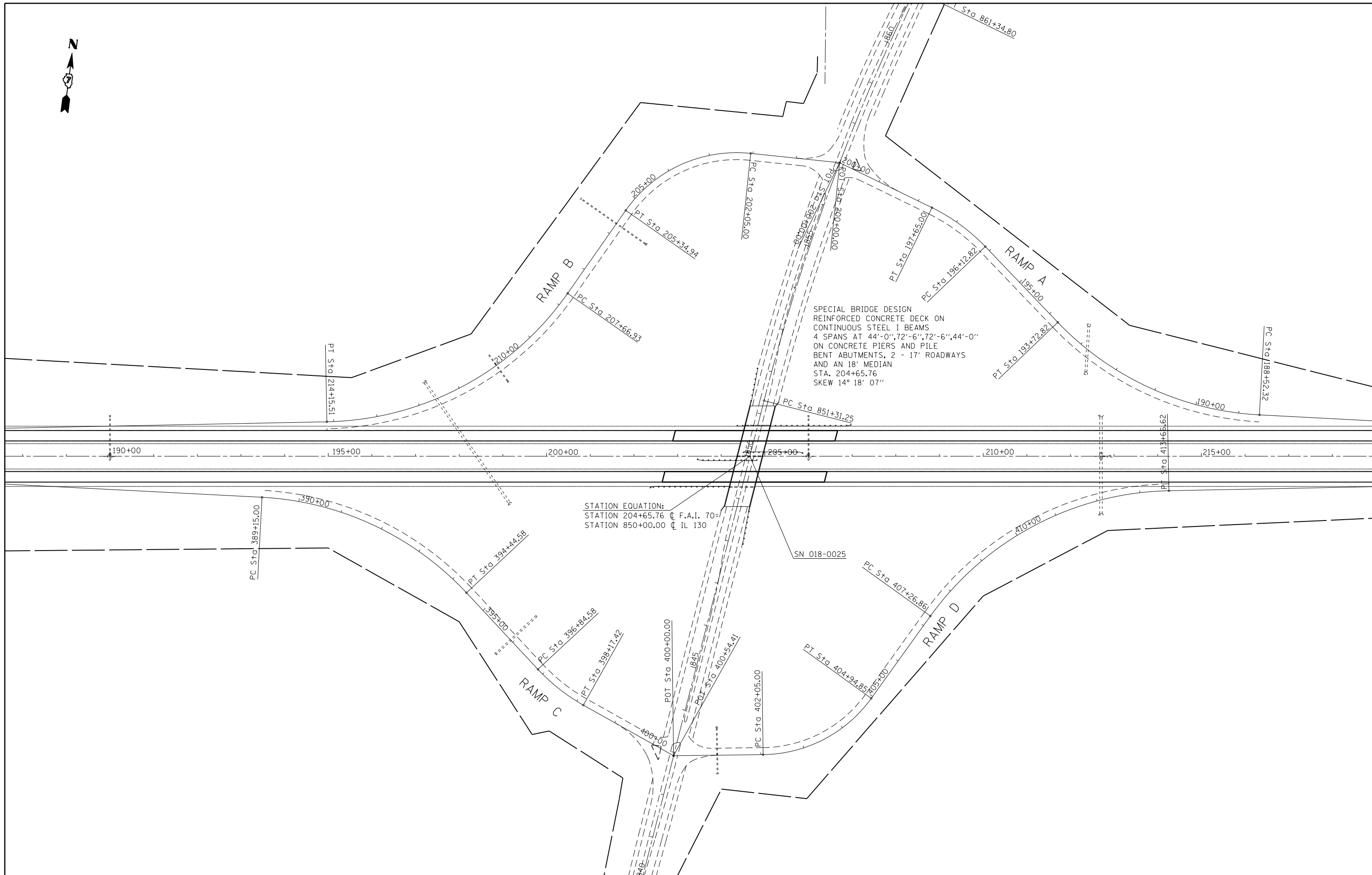
FILE NAME =	USER NAME = steffenmk	DESIGNED -	REVISED -
c:\pwork\pwork\dot\steffenmk\d0310740\074598-sht-plan.dgn		DRAWN -	REVISED -
Default	PLOT SCALE = 200.0000' / in.	CHECKED -	REVISED -
	PLOT DATE = 6/7/2014	DATE -	REVISED -

**STATE OF ILLINOIS  
DEPARTMENT OF TRANSPORTATION**

**PLAN SHEET  
STA. 270+00 TO STA. 290+00**

SCALE: 100      SHEET 7 OF 8 SHEETS      STA.      TO STA.

F.A.I. RTE.	SECTION	COUNTY	TOTAL SHEETS	SHEET NO.
70	(18-46, 18-47)RS-2	CUMBERLAND	29	23
ILLINOIS FED. AID PROJECT			CONTRACT NO. 74598	



SPECIAL BRIDGE DESIGN  
 REINFORCED CONCRETE DECK ON  
 CONTINUOUS STEEL I BEAMS  
 4 SPANS AT 44'-0", 72'-6", 72'-6", 44'-0"  
 ON CONCRETE PIERS AND PILE  
 BENT ABUTMENTS, 2 - 17' ROADWAYS  
 AND AN 18' MEDIAN  
 STA. 204+65.76  
 SKEW 14° 18' 07"

STATION EQUATION:  
 STATION 204+65.76 @ F.A.I. 70=  
 STATION 850+00.00 @ IL 130

SN 018-0025

FILE NAME =	USER NAME = steffenmk	DESIGNED -	REVISED -
ci:\pw\work\p\dot\steffenmk\d0310740\074598-sht-plan.dgn		DRAWN -	REVISED -
Default	PLOT SCALE = 200.0000' / in.	CHECKED -	REVISED -
	PLOT DATE = 6/7/2014	DATE -	REVISED -

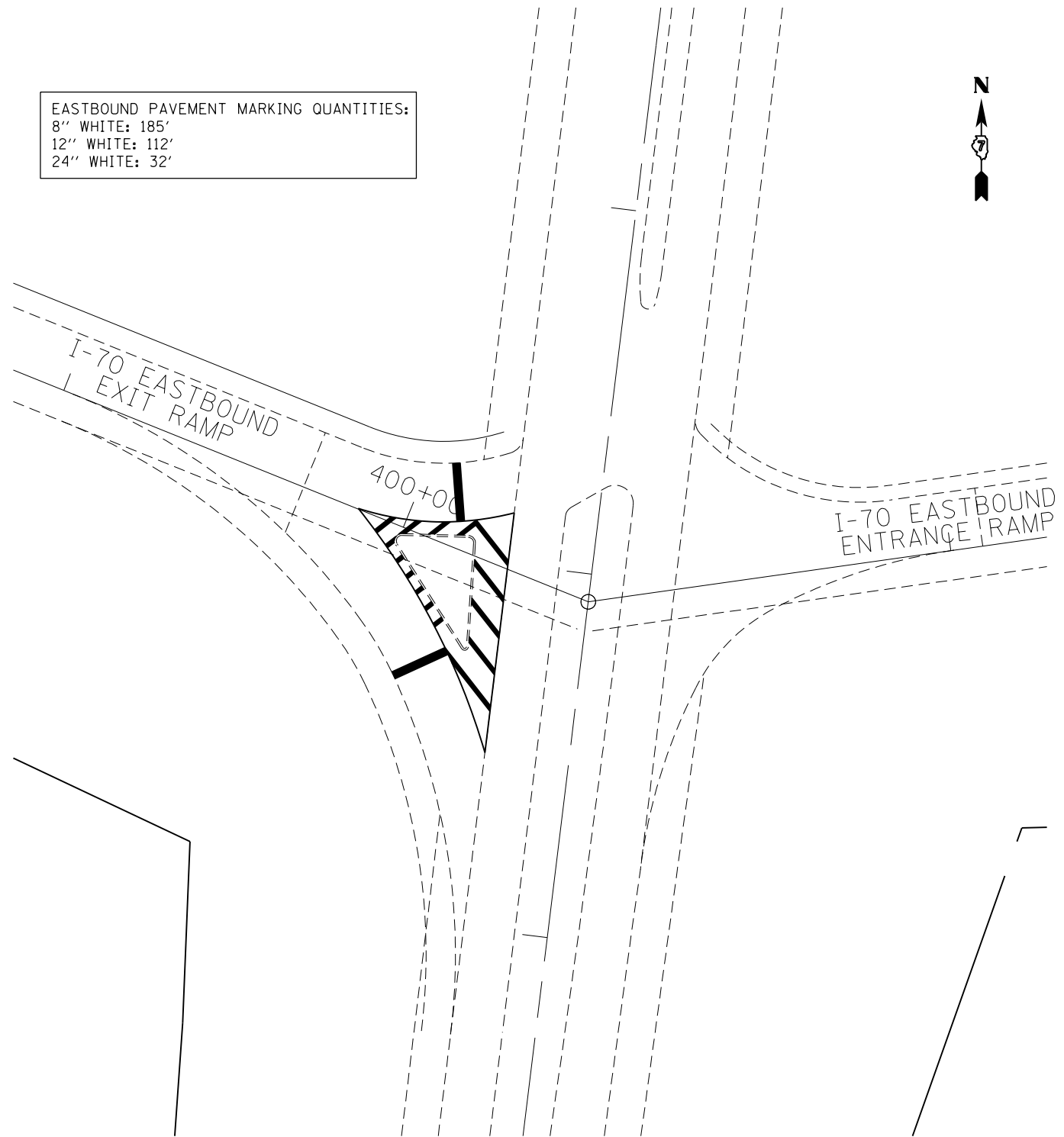
**STATE OF ILLINOIS  
 DEPARTMENT OF TRANSPORTATION**

<b>PLAN SHEET</b>			
<b>170 / ILL 130 INTERCHANGE</b>			
SCALE: 100	SHEET 8	OF 8 SHEETS	STA. TO STA.

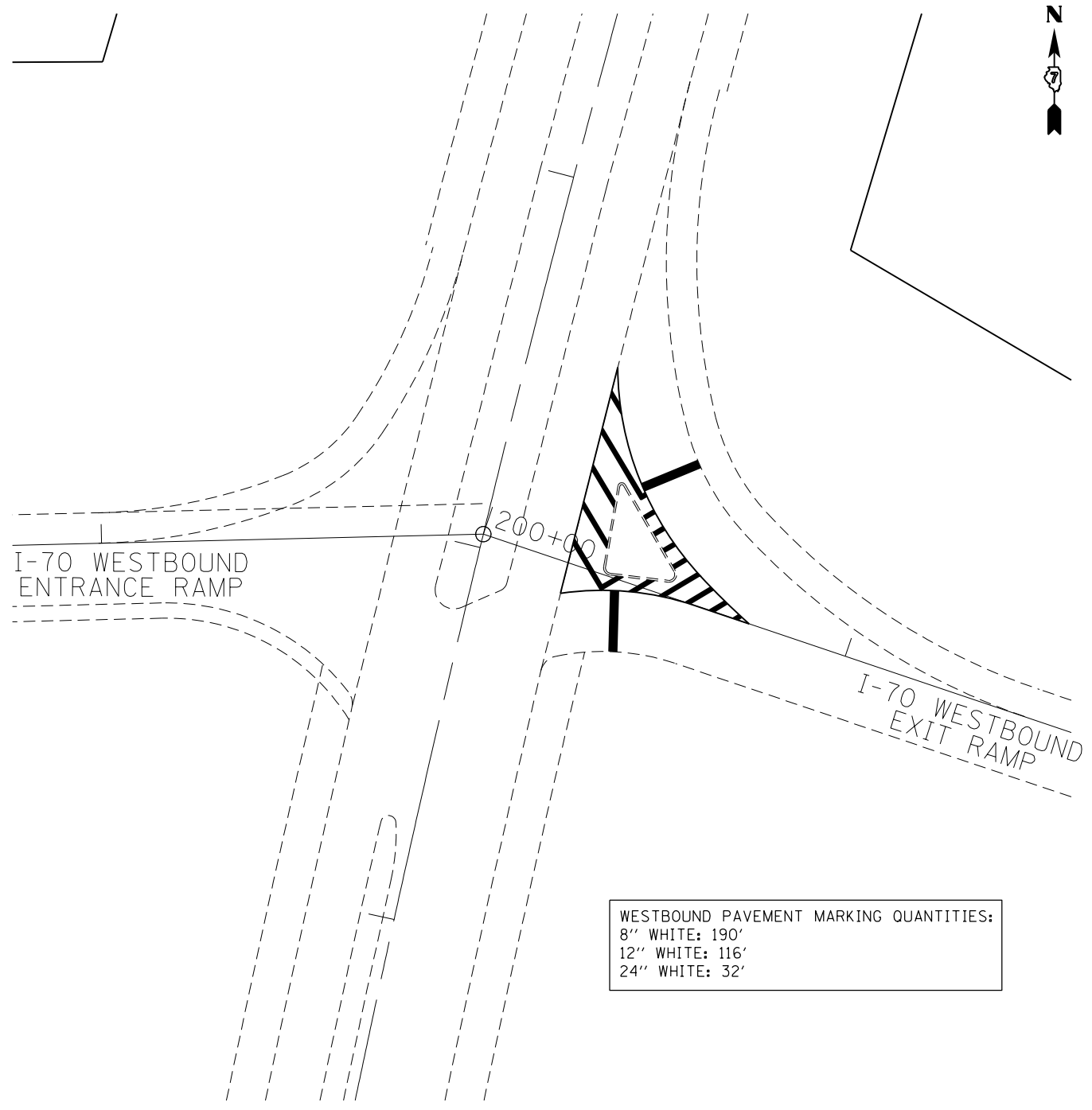
F.A.I. RTE.	SECTION	COUNTY	TOTAL SHEETS	SHEET NO.
70	(18-46, 18-47)RS-2	CUMBERLAND	29	24
CONTRACT NO. 74598			ILLINOIS FED. AID PROJECT	



EASTBOUND PAVEMENT MARKING QUANTITIES:  
 8" WHITE: 185'  
 12" WHITE: 112'  
 24" WHITE: 32'



I 70 EASTBOUND RAMPS & IL RTE 130  
 PAVEMENT MARKINGS



WESTBOUND PAVEMENT MARKING QUANTITIES:  
 8" WHITE: 190'  
 12" WHITE: 116'  
 24" WHITE: 32'

I 70 WESTBOUND RAMPS & IL RTE 130  
 PAVEMENT MARKINGS

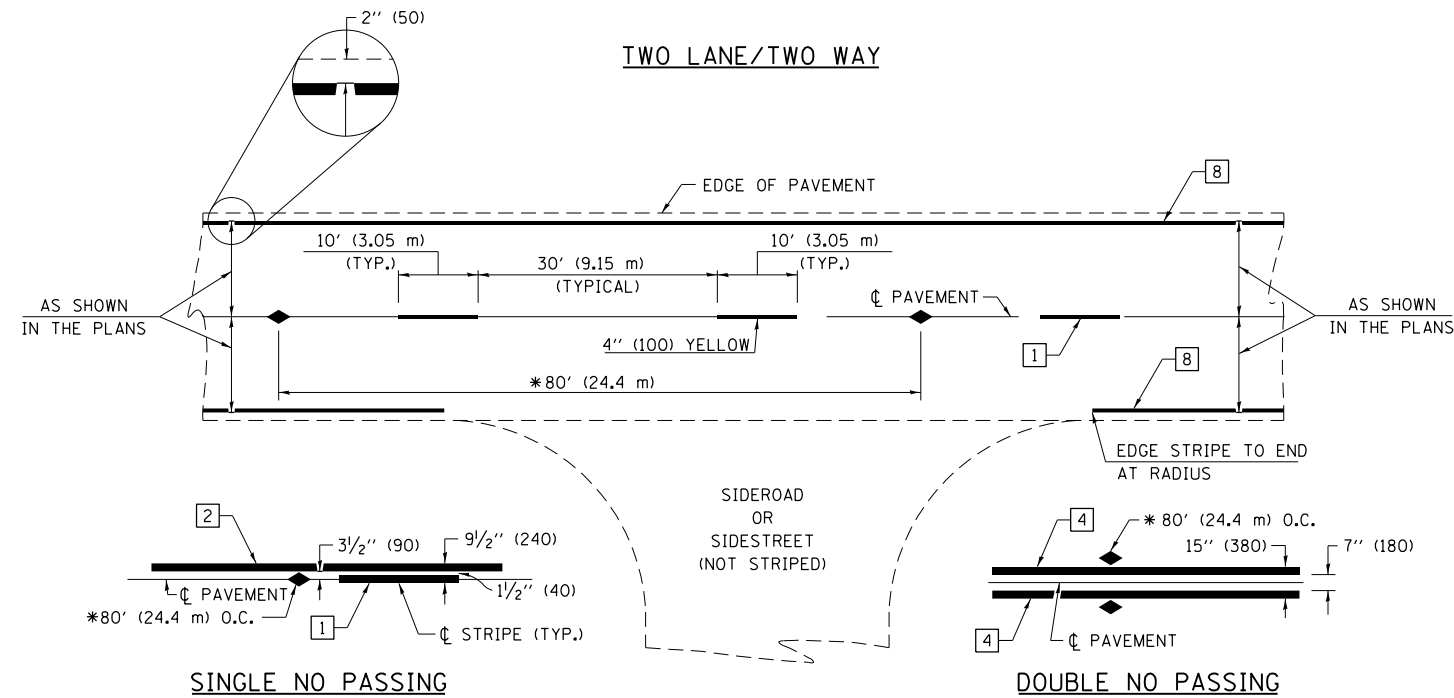
FILE NAME =	USER NAME = steffenmk	DESIGNED -	REVISED -
c:\pw\work\p\dot\stef\mk\d0310740\074598-sh-pavement_marking.dgn		DRAWN -	REVISED -
Default	PLOT SCALE = 40.0000' / in.	CHECKED -	REVISED -
	PLOT DATE = 6/7/2014	DATE -	REVISED -

STATE OF ILLINOIS  
 DEPARTMENT OF TRANSPORTATION

I 70 & IL RTE 130  
 PAVEMENT MARKINGS

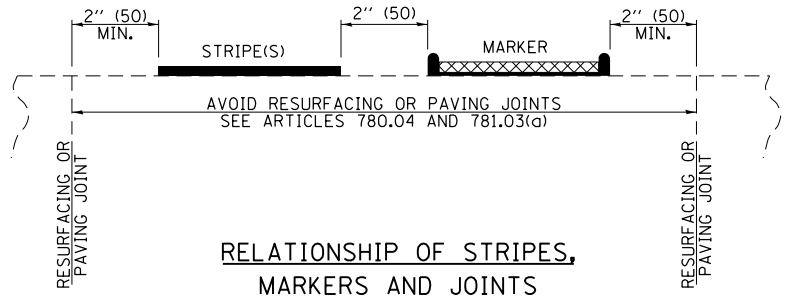
SCALE: SHEET 1 OF 1 SHEETS STA. TO STA.

F.A.I. RTE.	SECTION	COUNTY	TOTAL SHEETS	SHEET NO.
70	(18-46, 18-47)RS-2	CUMBERLAND	29	25
ILLINOIS FED. AID PROJECT			CONTRACT NO. 74598	



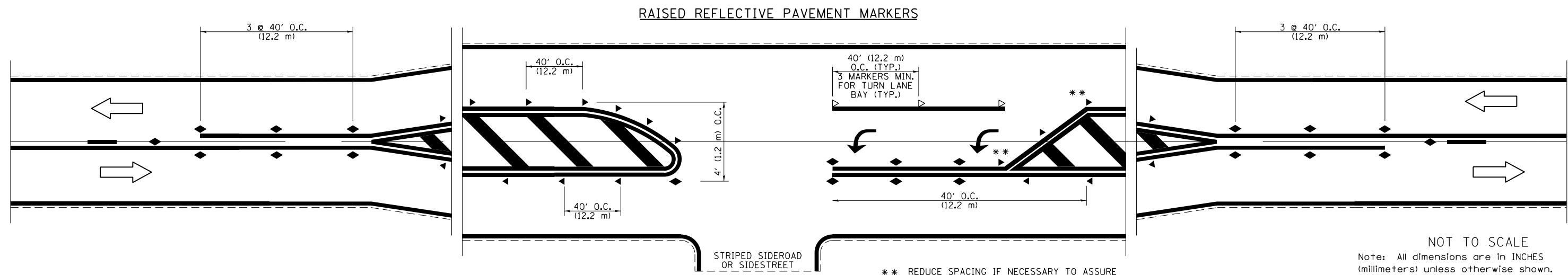
**PAVEMENT MARKING LEGEND**

- 1 4" (100) SKIP-DASH (YELLOW)
  - 2 4" (100) SOLID (YELLOW)
  - 3 12" (300) DIAGONAL (YELLOW)
  - 4 4" (100) DOUBLE YELLOW (NARROW)
  - 5 12" (300) SOLID WHITE
  - 6 RESERVED
  - 7 6" (150) SKIP-DASH (WHITE)
  - 8 4" (100) SOLID (WHITE)
  - 9 12" (300) DIAGONAL (WHITE)
  - 10 6" (150) SOLID (WHITE)
  - 11 24" (600) STOP BAR (WHITE)
  - 12 8" (200) SOLID (WHITE)
  - 13 4" (100) PARKING WHITE
- 



**TYPICAL PAVEMENT MARKERS LEGEND**

- ◆ TWO-WAY AMBER MARKER
- ▶ ONE-WAY AMBER MARKER
- ▷ ONE-WAY CRYSTAL MARKER



NOT TO SCALE  
 Note: All dimensions are in INCHES (millimeters) unless otherwise shown.

FILE NAME =	USER NAME = steffenmk	DESIGNED -	REVISED -
es:\pwork\pwork\stevfenmk\d0310740\074598-sh-pavement_marking.dgn		DRAWN -	REVISED -
		CHECKED -	REVISED -
		DATE -	REVISED -

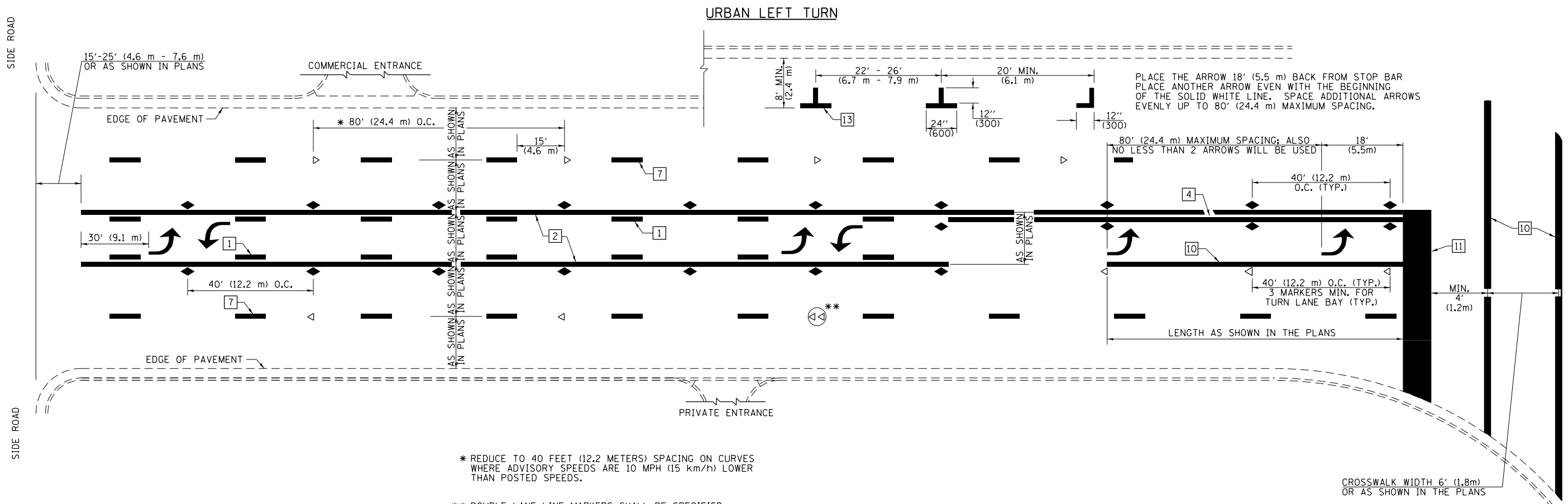
**STATE OF ILLINOIS  
 DEPARTMENT OF TRANSPORTATION**

**PAVEMENT MARKING AND RAISED REFLECTIVE PAVEMENT MARKERS  
 (RURAL & URBAN APPLICATIONS)**

SCALE: N/A SHEET NO. 1 OF 4 SHEETS STA. TO STA.

**DISTRICT 7 DETAIL NO. 7800001**

F.A.I. RTE.	SECTION	COUNTY	TOTAL SHEETS	SHEET NO.
70	(18-46, 18-47)RS-2	CUMBERLAND	29	26
CONTRACT NO. 74598				
ILLINOIS FED. AID PROJECT				



PLACE THE ARROW 18' (5.5 m) BACK FROM STOP BAR  
 PLACE ANOTHER ARROW EVEN WITH THE BEGINNING  
 OF THE SOLID WHITE LINE. SPACE ADDITIONAL ARROWS  
 EVENLY UP TO 80' (24.4 m) MAXIMUM SPACING.

\* REDUCE TO 40 FEET (12.2 METERS) SPACING ON CURVES  
 WHERE ADVISORY SPEEDS ARE 10 MPH (15 km/h) LOWER  
 THAN POSTED SPEEDS.

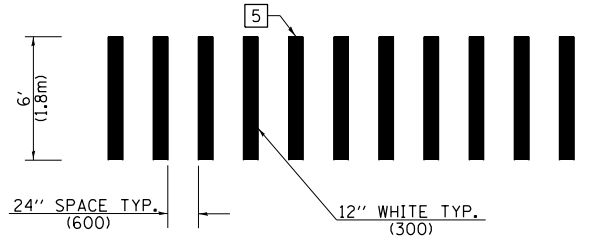
\*\* DOUBLE LANE LINE MARKERS SHALL BE SPECIFIED  
 AND SPACED AS SHOWN IN HIGHWAY STANDARD  
 781001 FOR MULTI-LANE DIVIDED AND UNDIVIDED  
 HIGHWAYS.

**PAVEMENT MARKING LEGEND**

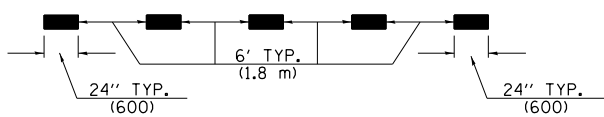
- 1 4" (100) SKIP-DASH (YELLOW)
- 2 4" (100) SOLID (YELLOW)
- 3 12" (300) DIAGONAL (YELLOW)
- 4 4" (100) DOUBLE YELLOW (NARROW)
- 5 12" (300) SOLID WHITE
- 6 RESERVED
- 7 6" (150) SKIP-DASH (WHITE)
- 8 4" (100) SOLID (WHITE)
- 9 12" (300) DIAGONAL (WHITE)
- 10 6" (150) SOLID (WHITE)
- 11 24" (600) STOP BAR (WHITE)
- 12 8" (200) SOLID (WHITE)
- 13 4" (100) PARKING WHITE

**GENERAL NOTES**

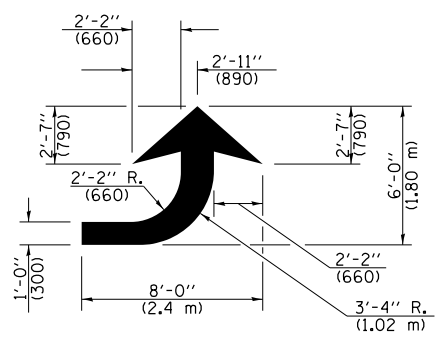
1. TURN ARROW PAIRS SHALL BE PLACED AT 250' (75 m) INTERVALS AND SHALL BE EVENLY SPACED BETWEEN BOTH ENDS OF THE BIDIRECTIONAL LEFT TURN LANE. USE A MINIMUM OF TWO PAIRS PER BLOCK.
2. THE SOLID YELLOW PAVEMENT MARKINGS [2] SHOULD GENERALLY START OR END NEAR THE RADIUS POINT OF EACH STREET RETURN EXCEPT WHERE ONE OR BOTH ENDS WOULD INCLUDE STOP BARS.
3. THE SKIP-DASH PAVEMENT MARKINGS [1] OR [7] SHOULD BE CENTERED BETWEEN BOTH ENDS OF EACH CITY BLOCK AND SHALL BE PLACED SO THEY LINE UP ACROSS FROM EACH OTHER.
4. USE LARGE ARROW SIZE FOR BOTH RURAL AND URBAN LOCATIONS. (SEE LAST PAGE OF SECTION 780x FOR SYMBOLS TABLE)
5. LANE LINE EXTENSIONS SHALL BE THE SAME COLOR AND WIDTH AS THE LANE LINE BEING EXTENDED.



**CROSSWALK DETAIL  
 (DECATUR CITY LIMITS ONLY)**

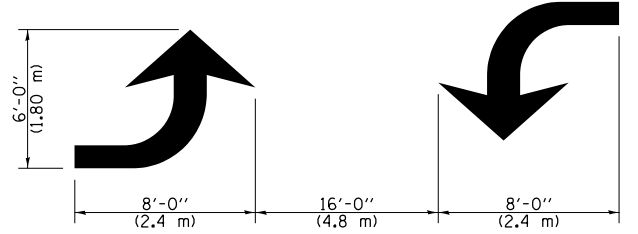


**LANE LINE EXTENSIONS**



**LEFT ARROW**

REVERSE FOR RIGHT ARROW  
 AREA = 15.6 SQ. FT. (1.47 m<sup>2</sup>)  
 (WHITE)



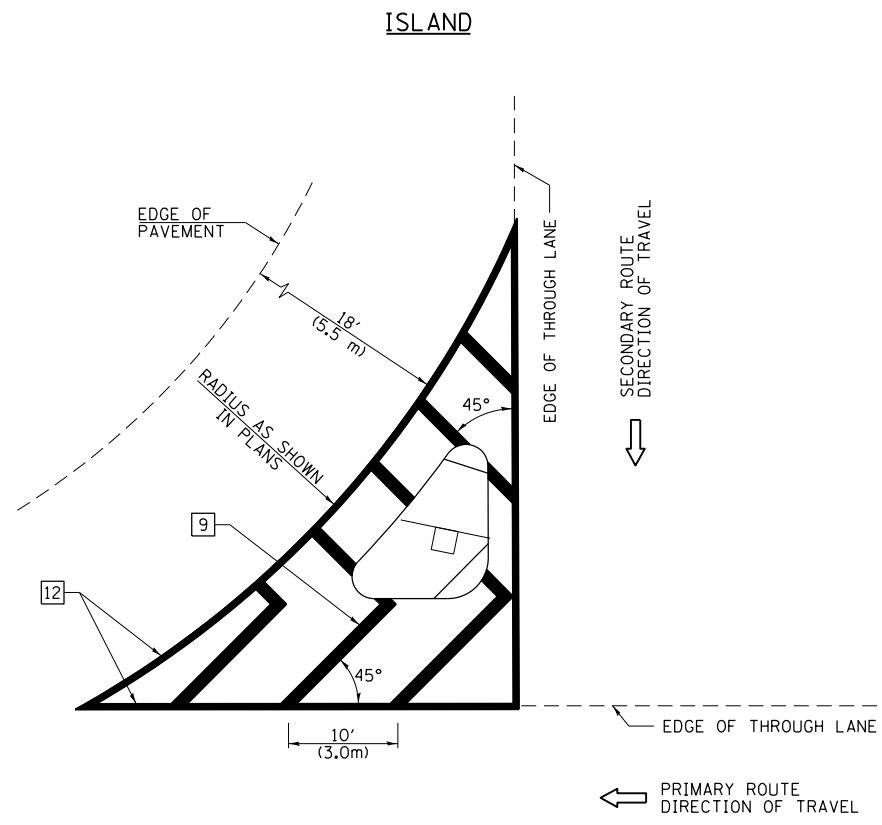
**TYPICAL DOUBLE  
 TURN ARROWS (WHITE)**

NOT TO SCALE

Note: All dimensions are in INCHES  
 (millimeters) unless otherwise shown.

**DISTRICT 7 DETAIL NO. 78000001**

FILE NAME =	USER NAME = steffenmk	DESIGNED -	REVISED -	<b>STATE OF ILLINOIS DEPARTMENT OF TRANSPORTATION</b>	<b>PAVEMENT MARKING AND RAISED REFLECTIVE PAVEMENT MARKERS (RURAL &amp; URBAN APPLICATIONS)</b>			F.A.I. RTE.	SECTION	COUNTY	TOTAL SHEETS	SHEET NO.
ci:\pw\work\p\idot\steffenmk\d0310740\074598-sh-pavement_marking.dgn	PLLOT SCALE = 48.0000' / in.	DRAWN -	REVISED -					70	(18-46, 18-47)RS-2	CUMBERLAND	29	27
	PLLOT DATE = 6/7/2014	CHECKED -	REVISED -		SCALE: N/A SHEET NO. 2 OF 4 SHEETS STA. TO STA.			CONTRACT NO. 74598		ILLINOIS FED. AID PROJECT		
		DATE -	REVISED -									

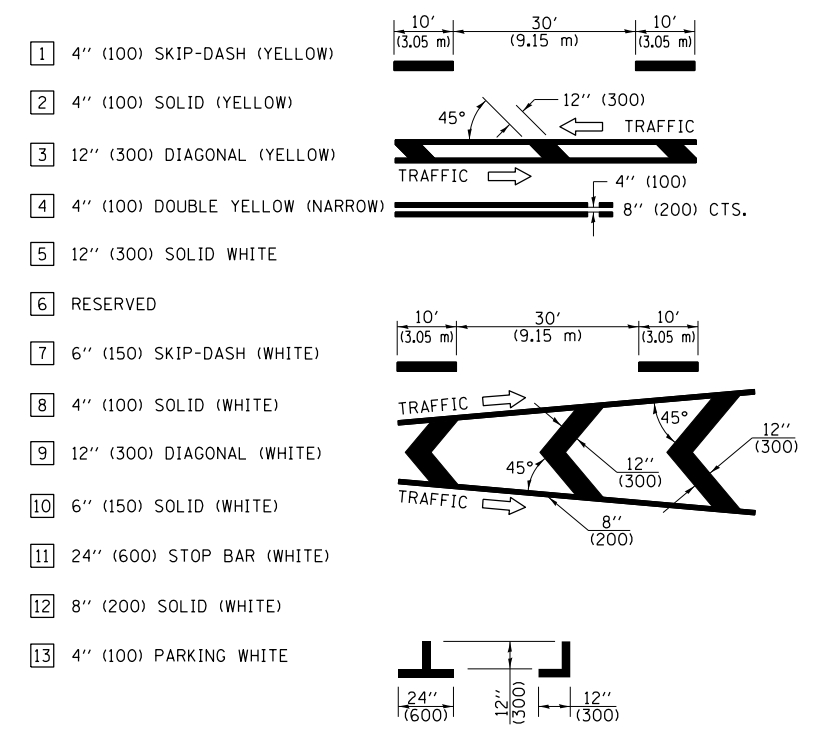


**GENERAL NOTES**

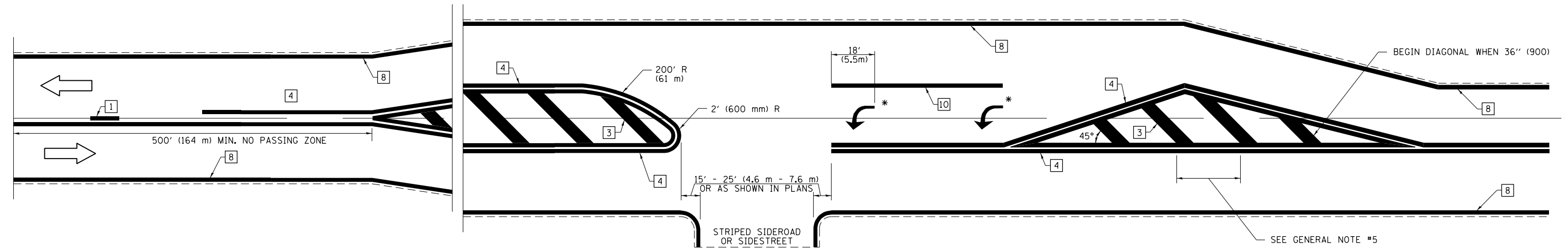
1. RAISED AND CORRUGATED MEDIANS SHALL BE OUTLINED WITH [2] IF PRESENT.
2. SOME OF THE INFORMATION INCLUDED WITH THIS DETAIL MAY NOT BE APPLICABLE TO THIS IMPROVEMENT.
3. PAVEMENT MARKINGS ARE TO BE EXTENDED THROUGH OMISSIONS WHEN APPLICABLE.
4. FINAL PAVEMENT MARKINGS SHALL BE IN PLACE PRIOR TO PLACING ANY RAISED REFLECTIVE PAVEMENT MARKERS.
5. THE FOLLOWING CRITERIA SHALL BE USED FOR SELECTING THE DIAGONAL PAVEMENT MARKING SPACING:
 

< 30 MPH (< 50 km/h)	15' (4.5 m)
30-45 MPH (50-75 km/h)	20' (6.0 m)
> 45 MPH (> 75 km/h)	30' (9.0 m)

**PAVEMENT MARKING LEGEND**



**RURAL LEFT TURN STRIPING**



\* PLACE AN ARROW 18' (5.5 m) BACK FROM STOP BAR. PLACE ANOTHER ARROW EVEN WITH THE BEGINNING OF THE SOLID WHITE LINE. SPACE ADDITIONAL ARROWS EVENLY UP TO 80' (24.4 m) MAXIMUM SPACING. USE MINIMUM OF 2 ARROWS.

NOT TO SCALE  
 Note: All dimensions are in INCHES (millimeters) unless otherwise shown.

**DISTRICT 7 DETAIL NO. 7800001**

FILE NAME =	USER NAME = steffenmk	DESIGNED -	REVISED -
ci:\pw\work\p\idot\steflenmk\d0310740\074598-sh1-pavement_marking.dgn		DRAWN -	REVISED -
	PLOT SCALE = 40.0000' / in.	CHECKED -	REVISED -
	PLOT DATE = 6/7/2014	DATE -	REVISED -

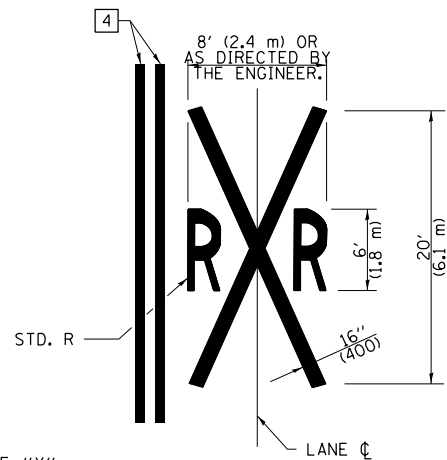
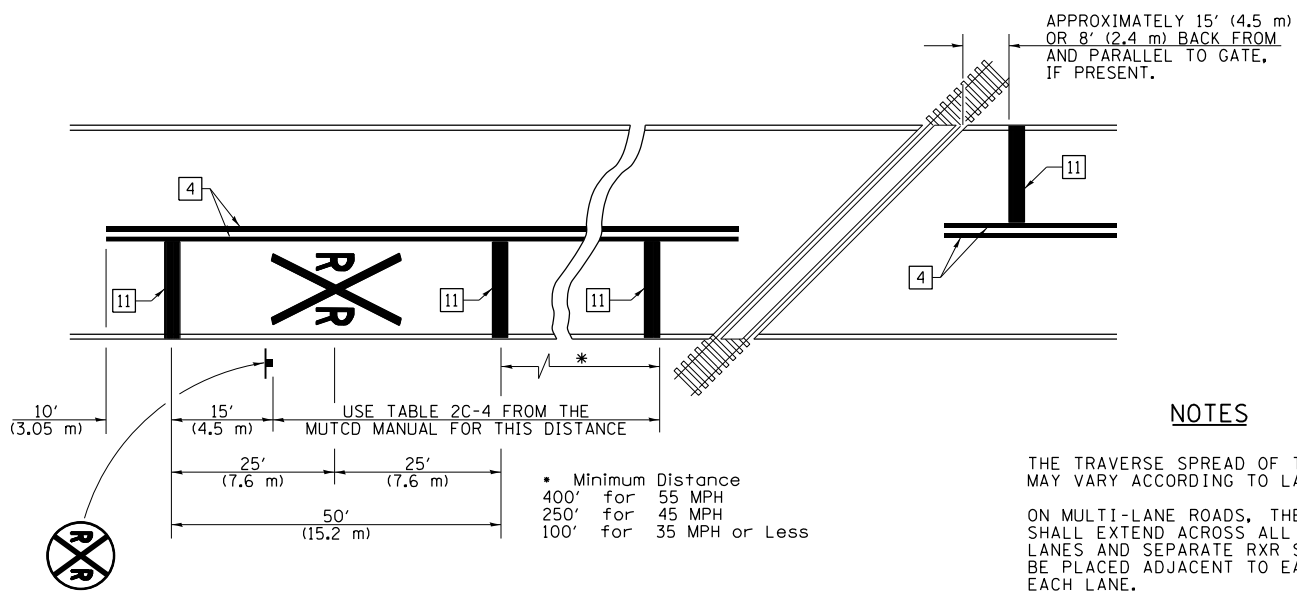
**STATE OF ILLINOIS  
 DEPARTMENT OF TRANSPORTATION**

**PAVEMENT MARKING AND RAISED REFLECTIVE PAVEMENT MARKERS  
 (RURAL & URBAN APPLICATIONS)**

SCALE: N/A    SHEET NO. 3 OF 4 SHEETS    STA.    TO STA.

F.A.I. RTE.	SECTION	COUNTY	TOTAL SHEETS	SHEET NO.
70	(18-46, 18-47)RS-2	CUMBERLAND	29	28
CONTRACT NO. 74598				
ILLINOIS FED. AID PROJECT				

PAVEMENT MARKINGS AT RAILROAD-HIGHWAY GRADE CROSSING



NOTES

THE TRAVERSE SPREAD OF THE "X" MAY VARY ACCORDING TO LANE WIDTH.

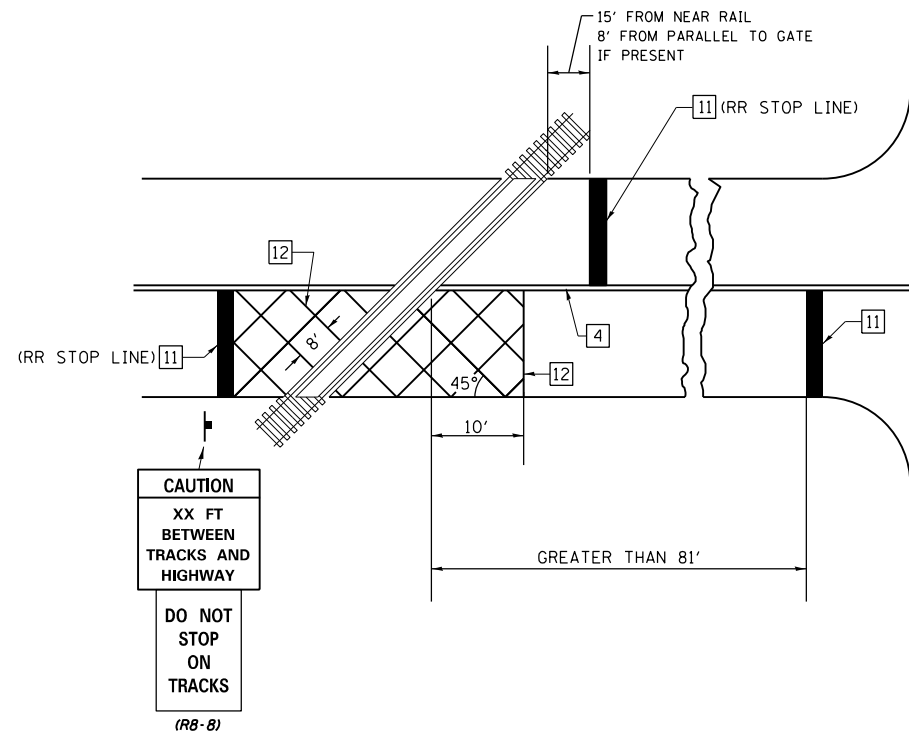
ON MULTI-LANE ROADS, THE STOP LINES SHALL EXTEND ACROSS ALL APPROACH LANES AND SEPARATE R X R SYMBOLS SHALL BE PLACED ADJACENT TO EACH OTHER IN EACH LANE.

WHEN THE PAVEMENT MARKING SYMBOL IS USED, A PORTION OF THE SYMBOL SHOULD BE LOCATED DIRECTLY ADJACENT TO THE ADVANCE WARNING SIGN (W10-1) AS PLACED BY TABLE II-1, CONDITION B OF THE MUTCD.

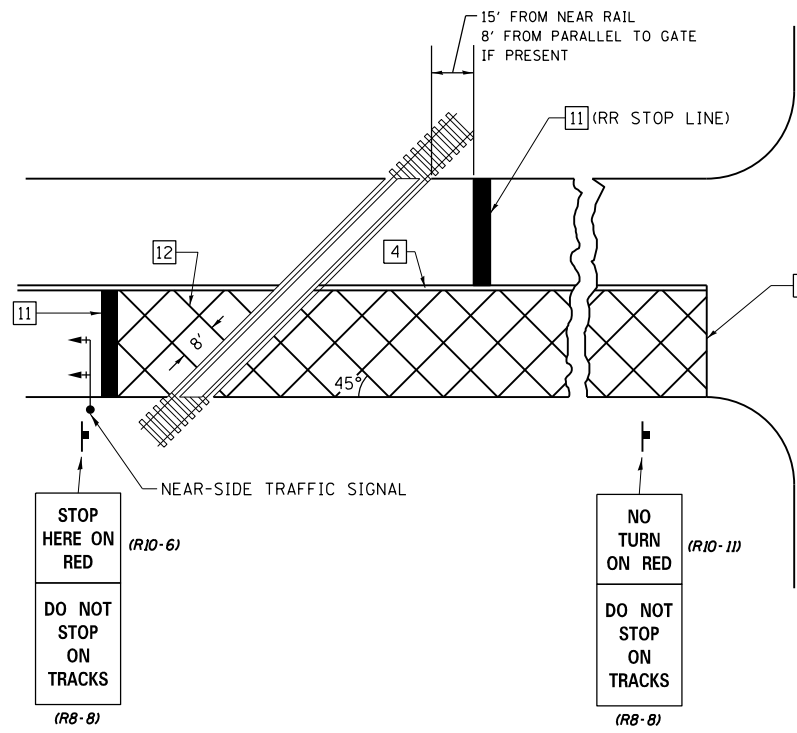
PAVEMENT MARKING LEGEND

- 1 4" (100) SKIP-DASH (YELLOW)
  - 2 4" (100) SOLID (YELLOW)
  - 3 12" (300) DIAGONAL (YELLOW)
  - 4 4" (100) DOUBLE YELLOW (NARROW)
  - 5 12" (300) SOLID WHITE
  - 6 RESERVED
  - 7 6" (150) SKIP-DASH (WHITE)
  - 8 4" (100) SOLID (WHITE)
  - 9 12" (300) DIAGONAL (WHITE)
  - 10 6" (150) SOLID (WHITE)
  - 11 24" (600) STOP BAR (WHITE)
  - 12 8" (200) SOLID (WHITE)
  - 13 4" (100) PARKING WHITE
- 

RAILROAD CROSSING WITH INTERCONNECT ONLY



RAILROAD CROSSING WITH INTERCONNECT AND PRE-SIGNALS



SUPPLEMENTAL PAVEMENT MARKING TREATMENT FOR RAILROAD-HIGHWAY GRADE CROSSING

GENERAL NOTES

- SUPPLEMENTAL PAVEMENT MARKINGS TO BE INSTALLED ONLY ON APPROACHES TO INTERSECTIONS CONTROLLED BY TRAFFIC SIGNALS WHICH ARE INTERCONNECTED WITH THE RAILROAD WARNING SIGNALS.
- EXTEND PAVEMENT MARKINGS TO THE INTERSECTION ONLY WHERE NEAR-SIDE TRAFFIC SIGNALS ARE USED.

NOT TO SCALE

Note: All dimensions are in INCHES (millimeters) unless otherwise shown.

DISTRICT 7 DETAIL NO. 7800001

FILE NAME =	USER NAME = steffenmk	DESIGNED -	REVISED -	<b>STATE OF ILLINOIS DEPARTMENT OF TRANSPORTATION</b>	<b>PAVEMENT MARKING AND RAISED REFLECTIVE PAVEMENT MARKERS (RURAL &amp; URBAN APPLICATIONS)</b>			F.A.I. RTE.	SECTION	COUNTY	TOTAL SHEETS	SHEET NO.
c:\pw\work\p\idot\steffenmk\d0310740\074598-sh1-pavement_marking.dgn		DRAWN -	REVISED -					70	(18-46, 18-47)RS-2	CUMBERLAND	29	29
PLOT SCALE = 40.0000" / in.		CHECKED -	REVISED -					CONTRACT NO. 74598				
PLOT DATE = 6/7/2014		DATE -	REVISED -					ILLINOIS FED. AID PROJECT				
					SCALE: N/A	SHEET NO. 4 OF 4 SHEETS	STA.	TO STA.				