

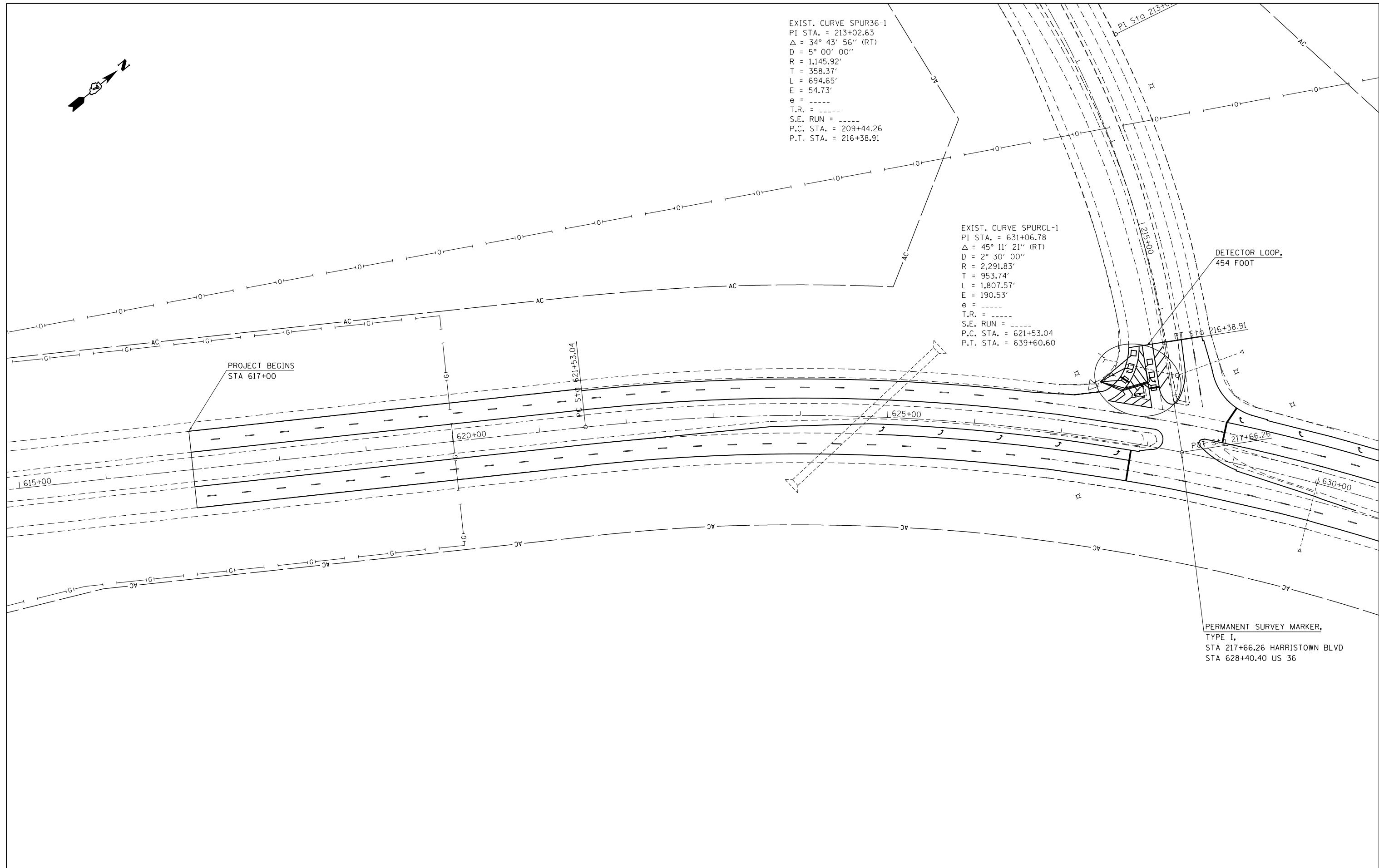
EXIST. CURVE SPUR36-1  
 PI STA. = 213+02.63  
 $\Delta = 34^\circ 43' 56''$  (RT)  
 D = 5° 00' 00"  
 R = 1,145.92'  
 T = 358.37'  
 L = 694.65'  
 E = 54.73'  
 e = -----  
 T.R. = -----  
 S.E. RUN = -----  
 P.C. STA. = 209+44.26  
 P.T. STA. = 216+38.91

EXIST. CURVE SPURCL-1  
 PI STA. = 631+06.78  
 $\Delta = 45^\circ 11' 21''$  (RT)  
 D = 2° 30' 00"  
 R = 2,291.83'  
 T = 953.74'  
 L = 1,807.57'  
 E = 190.53'  
 e = -----  
 T.R. = -----  
 S.E. RUN = -----  
 P.C. STA. = 621+53.04  
 P.T. STA. = 639+60.60

DETECTOR LOOP,  
 454 FOOT

PERMANENT SURVEY MARKER,  
 TYPE I,  
 STA 217+66.26 HARRISTOWN BLVD  
 STA 628+40.40 US 36

PROJECT BEGINS  
 STA 617+00



FILE NAME =	USER NAME = teasleyck	DESIGNED -	REVISED -
ci:\pw\work\p\idot\teasleyck\d0384872\07	4668-sh1-plan.dgn	DRAWN -	REVISED -
Default	PLOT SCALE = 100.0000' / in.	CHECKED -	REVISED -
	PLOT DATE = 5/20/2014	DATE -	REVISED -

**STATE OF ILLINOIS  
 DEPARTMENT OF TRANSPORTATION**

<b>PLAN SHEETS</b>			
<b>STA 617+00 TO STA 630+00</b>			
SCALE:	SHEET	OF SHEETS	STA. TO STA.

F.A.P. RTE.	SECTION	COUNTY	TOTAL SHEETS	SHEET NO.
323	D7 HMA RESURF 2015-2	MACON	15	9
CONTRACT NO. 74668				ILLINOIS FED. AID PROJECT