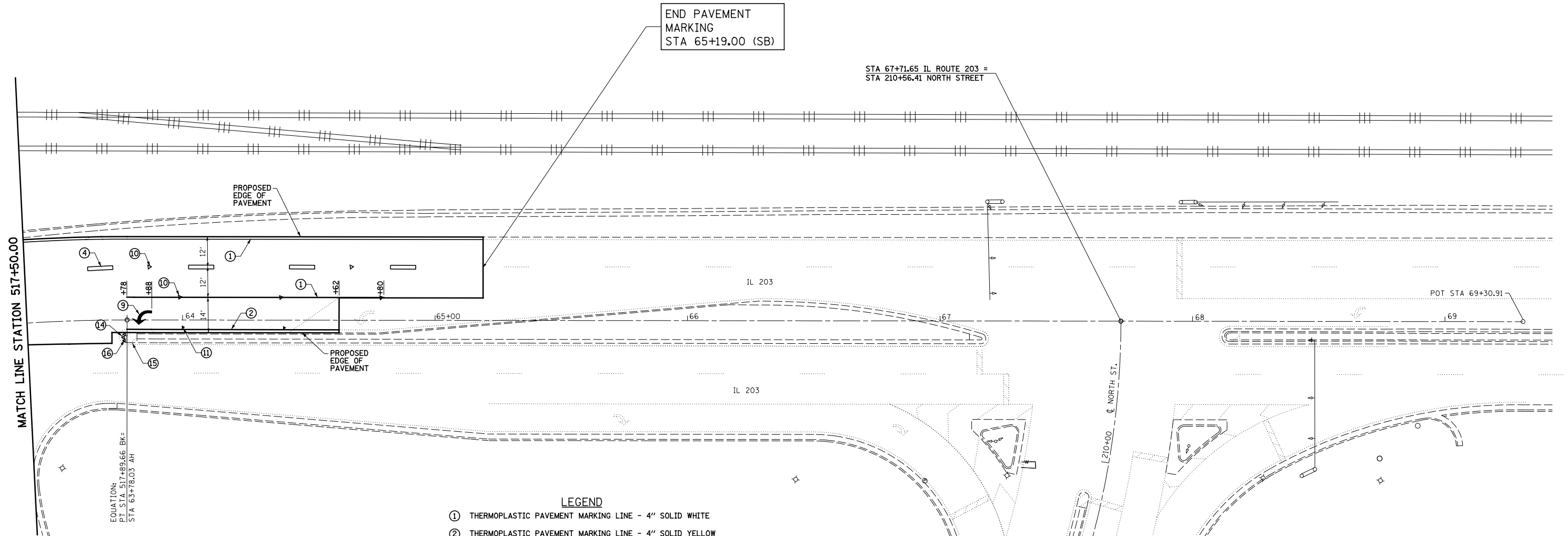


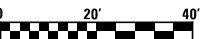
EXIST. CURVE F-4  
 PI STA. = 516+28.48  
 $\Delta = 31^\circ 08' 14''$  (RT)  
 $D = 9^\circ 24' 51''$   
 $R = 608.61'$   
 $T = 169.57'$   
 $L = 330.75'$   
 $E = 23.18'$   
 P.C. STA. = 514+58.91  
 P.T. STA. = 517+89.66



EQUATION:  
 PI STA 517+89.66 BK=  
 STA 63+78.03 AH

**LEGEND**

- ① THERMOPLASTIC PAVEMENT MARKING LINE - 4" SOLID WHITE
- ② THERMOPLASTIC PAVEMENT MARKING LINE - 4" SOLID YELLOW
- ③ THERMOPLASTIC PAVEMENT MARKING LINE - 4" SKIP DASH YELLOW (10' - 30')
- ④ THERMOPLASTIC PAVEMENT MARKING LINE - 4" SKIP DASH WHITE (10' - 30')
- ⑤ THERMOPLASTIC PAVEMENT MARKING LINE - 4" SKIP DASH WHITE (2' - 6')
- ⑥ THERMOPLASTIC PAVEMENT MARKING LINE - 6" SOLID WHITE
- ⑦ THERMOPLASTIC PAVEMENT MARKING LINE - 12" SOLID YELLOW
- ⑧ THERMOPLASTIC PAVEMENT MARKING LINE - 12" SOLID WHITE
- ⑨ THERMOPLASTIC PAVEMENT MARKING - LETTERS AND SYMBOLS
- ⑩ RAISED REFLECTIVE PAVEMENT MARKERS - CRYSTAL, ONE-WAY
- ⑪ RAISED REFLECTIVE PAVEMENT MARKERS - AMBER, ONE-WAY
- ⑫ RAISED REFLECTIVE PAVEMENT MARKERS - AMBER, TWO-WAY
- ⑬ PAVEMENT MARKING REMOVAL
- ⑭ PAINT PAVEMENT MARKING CURB (NOSE)
- ⑮ PAINT PAVEMENT MARKING CURB (MEDIAN STRIPING)
- ⑯ PRISMATIC CURB REFLECTOR



FILE NAME =	USER NAME = betsy	DESIGNED - ESW	REVISED - 5-30-14
#FILEL\$		DRAWN - PDB	REVISED -
	PLOT SCALE = 48.000' / in.	CHECKED - JWS	REVISED -
	PLOT DATE = 6/5/2014	DATE - 3-17-14	REVISED -

**STATE OF ILLINOIS  
 DEPARTMENT OF TRANSPORTATION**

**PAVEMENT MARKING DETAILS**

SCALE: 1"=20' SHEET NO. 11 OF 11 SHEETS STA. 517+50.00 TO STA. 523+42.54

F.A.P. RTE.	SECTION	COUNTY	TOTAL SHEETS	SHEET NO.
594	(X-3,X-2)RS-1	MADISON	52	40
<b>CONTRACT NO. 76G24</b>				
ILLINOIS FED. AID PROJECT				