

STATE OF ILLINOIS
DEPARTMENT OF TRANSPORTATION
DIVISION OF HIGHWAYS

**PROPOSED
HIGHWAY PLANS**

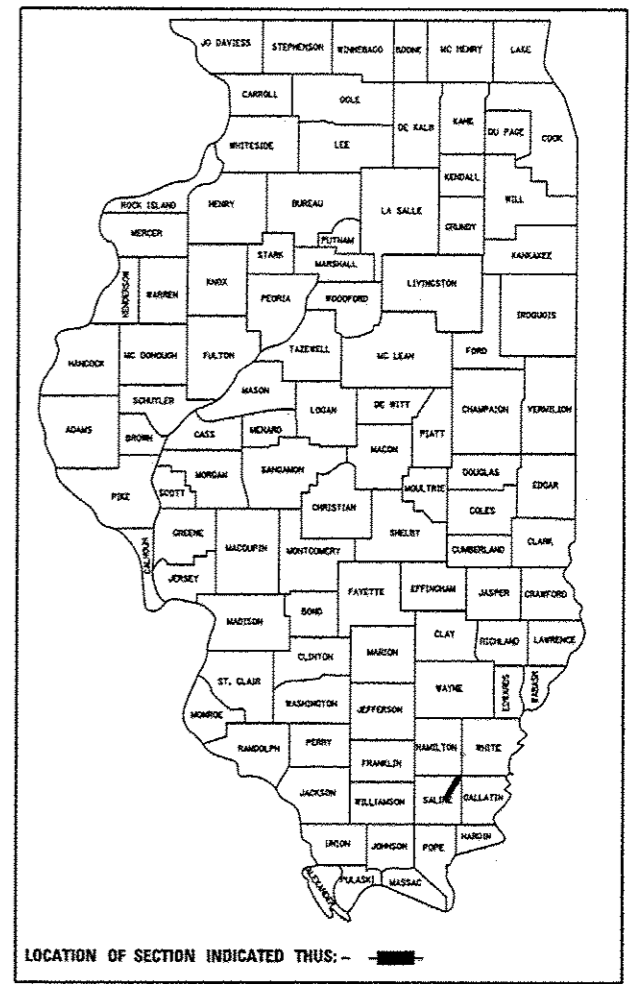
FAP ROUTE 332 (US 45)
SECTION (29,30)R-1
PROJECT ACNHPP - 0332 (119)
SALINE COUNTY
4 LANE EXPRESSWAY

C-99-063-08

F.A.P. RTE.	SECTION	COUNTY	TOTAL SHEETS	SHEET NO.
332	(29,30)R-1	SALINE	745	1
FED. ROAD DIST. NO.	ILLINOIS	CONTRACT NO. 78077		

* 745 + 10 = 701 TOTAL SHEETS

D-99-046-08



FOR INDEX OF SHEETS, SEE SHEET NO. 2
FOR SUMMARY OF QUANTITIES, SEE SHEET NO. 6

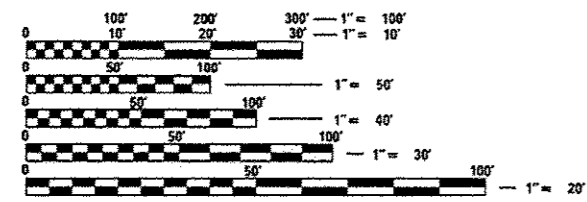
STATION EQUATION:

OMISSIONS: NONE

TRAFFIC DATA:
2007 ADT FOR FAP 332 (US 45)

SALINE COUNTY:
10,300 WITH 5.3% TRUCKS (URBAN)
4,450 WITH 17.4% TRUCKS (RURAL)

TOWNSHIPS:
EAST ELDORADO, RECTOR

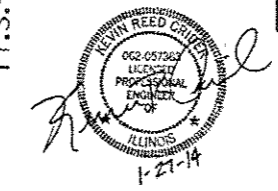
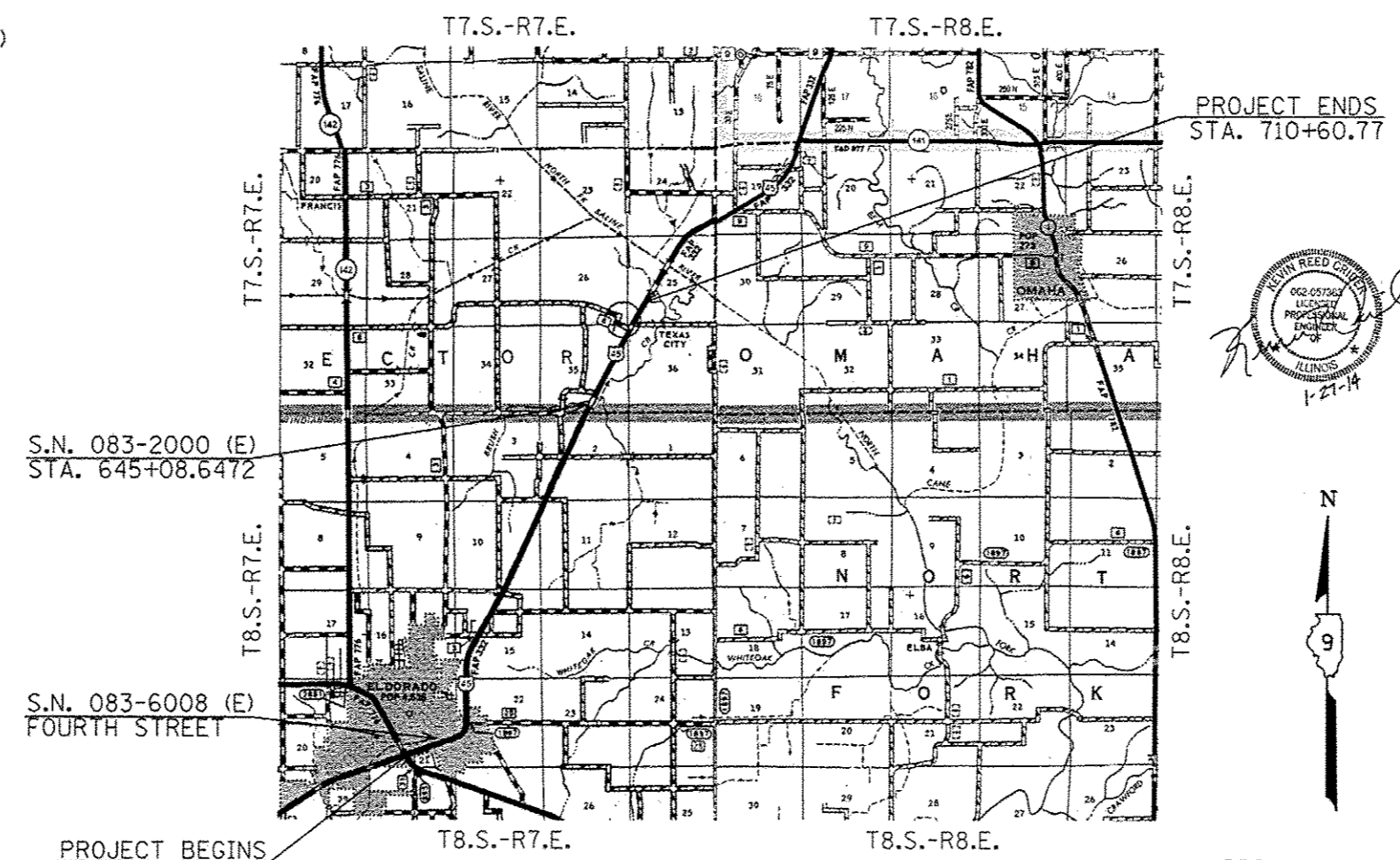


FULL SIZE PLANS HAVE BEEN PREPARED USING STANDARD ENGINEERING SCALES. REDUCED SIZED PLANS WILL NOT CONFORM TO STANDARD SCALES. IN MAKING MEASUREMENTS ON REDUCED PLANS, THE ABOVE SCALES MAY BE USED.

J.U.L.I.E.
JOINT UTILITY LOCATION INFORMATION FOR EXCAVATION
1-800-892-0123
OR 811

PROJECT ENGINEER CHARLES STEIN
PROJECT MANAGER KEVIN CRIDER

CONTRACT NO. 78077



APPROX. SCALE
1" = 5000'

FAP RTE 332 (US 45)
GROSS LENGTH OF PROJECT : 31,785.77 FT. = 6.020 MILES
NET LENGTH OF PROJECT : 31,785.77 FT. = 6.020 MILES

BFW BACON | FARMER | WORKMAN
ENGINEERING & TESTING, INC.
600 SOUTH 17th STREET 409 NORTH COURT STREET 1516 DUNGLAD DRIVE
PACIFIC, WY 82005 MARION, IL 62959 JARVIS, WY 82077
PHONE - 270.443.1995 PHONE - 618.997.9190 PHONE - 270.753.2307

www.bfwengineers.com COPYRIGHT © 2011 - BACON, FARMER, WORKMAN ENGINEERING & TESTING, INC.

STATE OF ILLINOIS
DEPARTMENT OF TRANSPORTATION
DIVISION OF HIGHWAYS

SUBMITTED Jan 31 20 14
Kevin Reed Crider
DEPUTY DIRECTOR OF HIGHWAYS, REGION ENGINEER

June 27 20 14
John D. Balamo, P.E.
ACTING ENGINEER OF DESIGN AND ENVIRONMENT

June 27 20 14
Omer Osman, P.E.
DIRECTOR OF HIGHWAYS, CHIEF ENGINEER

**PRINTED BY THE AUTHORITY
OF THE STATE OF ILLINOIS**