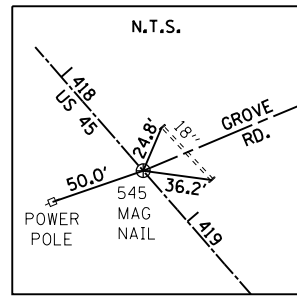
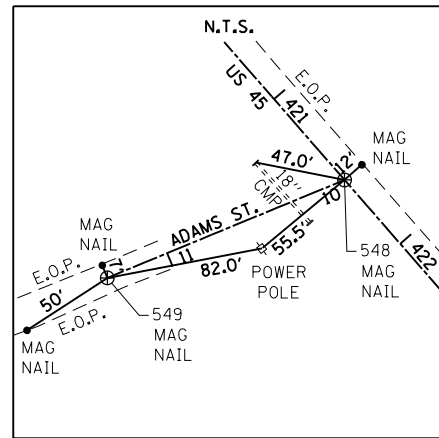


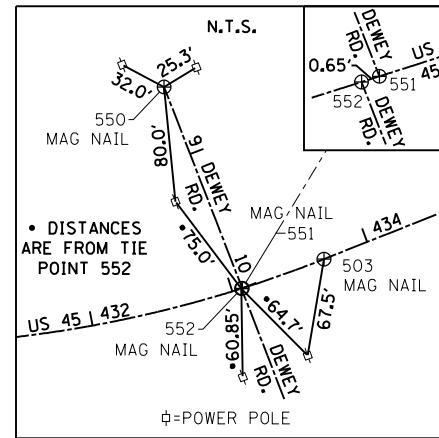
P.O.T. STA. 8+64.00 \oslash GROVE RD.
N. 416,461.3293
E. 956,240,0400



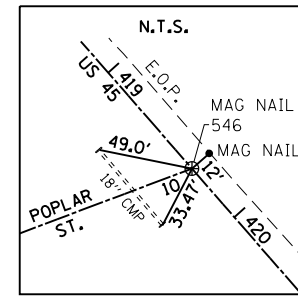
P.O.T. STA. 10+00.00 \oslash GROVE RD.
STA. 418+64.88 \oslash U.S. 45
N. 416,325.3784
E. 956,243.6928



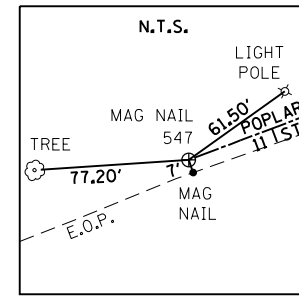
P.O.T. STA. 10+00.00 \oslash ADAMS ST.
STA. 421+55.85 \oslash U.S. 45
N. 416,424.6795
E. 957,082.4571
P.O.T. STA. 11+33.71 \oslash ADAMS ST.
N. 416,290.9979
E. 956,520.1549



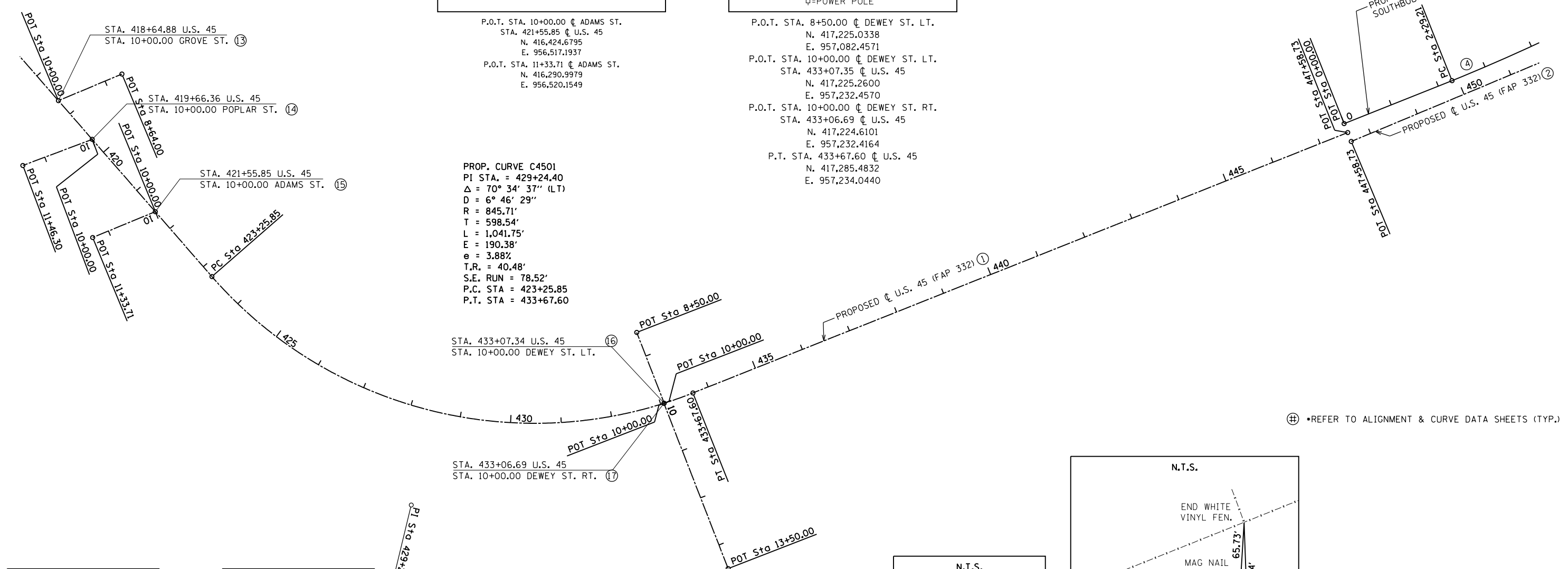
P.O.T. STA. 8+50.00 \oslash DEWEY ST. LT.
N. 417,225.0338
E. 957,082.4571
P.O.T. STA. 10+00.00 \oslash DEWEY ST. LT.
STA. 433+07.35 \oslash U.S. 45
N. 417,225.2600
E. 957,232.4570
P.O.T. STA. 10+00.00 \oslash DEWEY ST. RT.
STA. 433+06.69 \oslash U.S. 45
N. 417,224.6101
E. 957,232.4164
P.T. STA. 433+67.60 \oslash U.S. 45
N. 417,285.4832
E. 957,234.0440



P.O.T. STA. 10+00.00 \oslash POPLAR ST.
STA. 419+66.36 \oslash U.S. 45
N. 416,360.0116
E. 956,339.0817

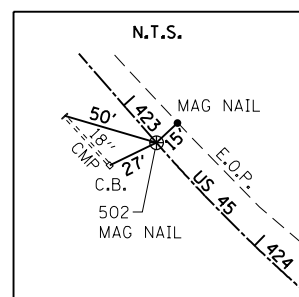


P.O.T. STA. 11+46.30 \oslash POPLAR ST.
N. 416,213.7168
E. 956,337.7527

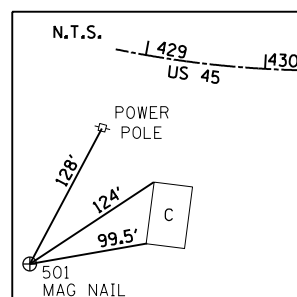


PROP. CURVE C4501
PI STA. = 429+24.40
 $\Delta = 70^\circ 34' 37''$ (LT)
D = 6° 46' 29"
R = 845.71'
T = 598.54'
L = 1,041.75'
E = 190.38'
e = 3.88%
T.R. = 40.48'
S.E. RUN = 78.52'
P.C. STA = 423+25.85
P.T. STA = 433+67.60

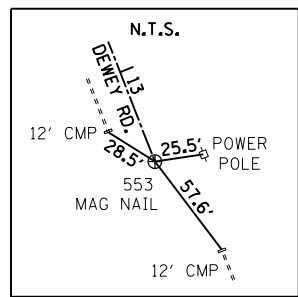
⊕ REFER TO ALIGNMENT & CURVE DATA SHEETS (TYP.)



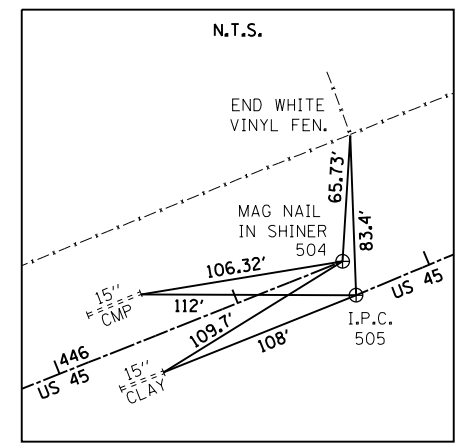
P.C. STA. 423+25.85 \oslash U.S. 45
N. 416,482.6971
E. 956,676.9891



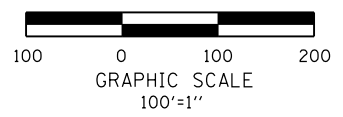
P.I. STA. 429+24.40 \oslash U.S. 45
N. 416,686.9657
E. 957,239.5976



P.O.T. STA. 13+50.00 \oslash DEWEY ST. RT.
N. 417,225.1379
E. 957,582.4161



P.O.T. STA. 447+58.73 (BACK) \oslash U.S. 45
N. 418,676.5542
E. 957,221.1364
P.O.T. STA. 447+58.73 (AHEAD) \oslash U.S. 45
N. 418,676.7305
E. 957,240.1374



FILE NAME =	USER NAME = bemory	DESIGNED -	REVISED -	STATE OF ILLINOIS DEPARTMENT OF TRANSPORTATION	ALIGNMENTS & TIES U.S. 45, GROVE RD., POPLAR ST., ADAMS ST. & DEWEY RD.	F.A.P. RTE.	SECTION	COUNTY	TOTAL SHEETS	SHEET NO.
P:\Projects\2011 Projects\11297 - IDOT US 45 Ph2\CV\CADD Sheets\0978077-sht-ATB-Ties.dwg	DRAWN -	REVISED -	332			(29,30)R-1	SALINE	745	68	
Default	CHECKED -	REVISED -	CONTRACT NO. 78077							
PLOT SCALE = 200.0000' / in.	DATE -	REVISED -	ILLINOIS FED. AID PROJECT							