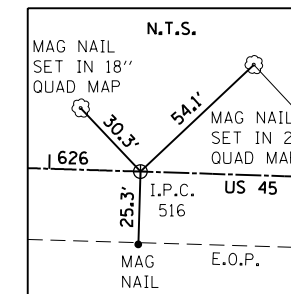
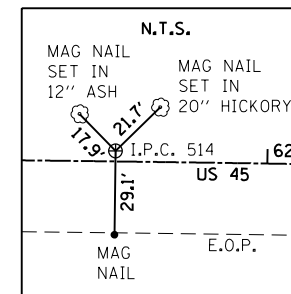
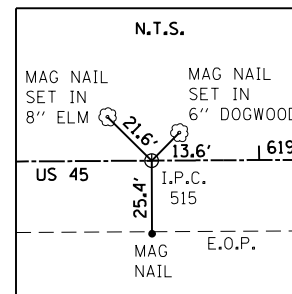


PROP. CURVE SC43  
 PI STA. = 11+53.22  
 $\Delta = 54^\circ 47' 50''$  (RT)  
 $D = 49^\circ 49' 21''$   
 $R = 115.00'$   
 $T = 59.61'$   
 $L = 109.98'$   
 $E = 14.53'$   
 $e = 6.00\%$   
 $T.R. = 18.00'$   
 $S.E. RUN = 73.00'$   
 $P.C. STA = 10+93.61$   
 $P.T. STA = 12+03.60$



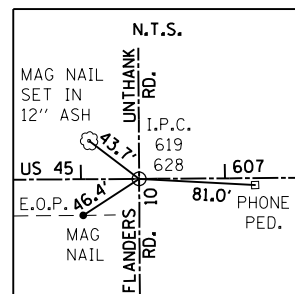
PROP. CURVE SC42  
 PI STA. = 7+70.79  
 $\Delta = 25^\circ 09' 01''$  (RT)  
 $D = 20^\circ 50' 05''$   
 $R = 275.00'$   
 $T = 61.34'$   
 $L = 120.71'$   
 $E = 6.76'$   
 $e = 6.00\%$   
 $T.R. = 21.00'$   
 $S.E. RUN = 82.00'$   
 $P.C. STA = 7+09.45$   
 $P.T. STA = 8+30.16$

PROP. CURVE SC44  
 PI STA. = 14+04.34  
 $\Delta = 58^\circ 17' 47''$  (LT)  
 $D = 49^\circ 49' 21''$   
 $R = 115.00'$   
 $T = 64.13'$   
 $L = 117.01'$   
 $E = 16.67'$   
 $e = 6.00\%$   
 $T.R. = 18.00'$   
 $S.E. RUN = 73.00'$   
 $P.C. STA = 13+40.20$   
 $P.T. STA = 14+57.21$

PROP. CURVE C03  
 PI STA. = 622+47.24  
 $\Delta = 2^\circ 11' 01''$  (RT)  
 $D = 0^\circ 17' 02''$   
 $R = 20,177.03'$   
 $T = 384.55'$   
 $L = 769.01'$   
 $E = 3.66'$   
 $e = N.C.$   
 $P.C. STA = 618+62.68$   
 $P.T. STA = 626+31.69$

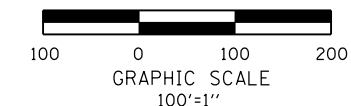
PROP. CURVE SC45  
 PI STA. = 13+20.51  
 $\Delta = 57^\circ 13' 07''$  (LT)  
 $D = 20^\circ 50' 05''$   
 $R = 275.00'$   
 $T = 149.99'$   
 $L = 274.63'$   
 $E = 38.25'$   
 $e = 6.00\%$   
 $T.R. = 21.00'$   
 $S.E. RUN = 82.00'$   
 $P.C. STA = 11+70.51$   
 $P.T. STA = 14+45.14$

PROP. CURVE SC46  
 PI STA. = 17+25.24  
 $\Delta = 32^\circ 29' 28''$  (RT)  
 $D = 20^\circ 50' 05''$   
 $R = 275.00'$   
 $T = 80.13'$   
 $L = 155.95'$   
 $E = 11.44'$   
 $e = 6.00\%$   
 $T.R. = 21.00'$   
 $S.E. RUN = 82.00'$   
 $P.C. STA = 16+45.10$   
 $P.T. STA = 18+01.05$



P.O.T. STA. 10+00.00  $\text{CL}$  UNTHANK RD.  
 STA. 606+40.43  $\text{CL}$  U.S. 45  
 P.O.T. STA. 10+00.00  $\text{CL}$  FLANDERS RD.  
 N. 433,156.0182  
 E. 963,174.1300

⊕ REFER TO ALIGNMENT & CURVE DATA SHEETS (TYP.)



FILE NAME =	USER NAME = bemory	DESIGNED -	REVISED -	<b>STATE OF ILLINOIS DEPARTMENT OF TRANSPORTATION</b>	<b>ALIGNMENTS &amp; TIES</b>			F.A.P. RTE. 332	SECTION (29,30)R-1	COUNTY SALINE	TOTAL SHEETS 745	SHEET NO. 74	
P:\Projects\2011 Projects\11297 - IDOT US 45 Ph2\CV\CADD Sheets\0978077-sht-ATB-Ties.dwg	DRAWN -	REVISIONS -	REVISIONS -		<b>U.S. 45, UNTHANK RD. &amp; FLANDERS RD.</b>			CONTRACT NO. 78077					
Default	PLOT SCALE = 200.0000' / in.	CHECKED -	REVISIONS -		SCALE: 100'=1"	SHEET 8	OF 11 SHEETS	STA. TO STA.	ILLINOIS FED. AID PROJECT				
	PLOT DATE = 4/30/2014	DATE -	REVISIONS -										