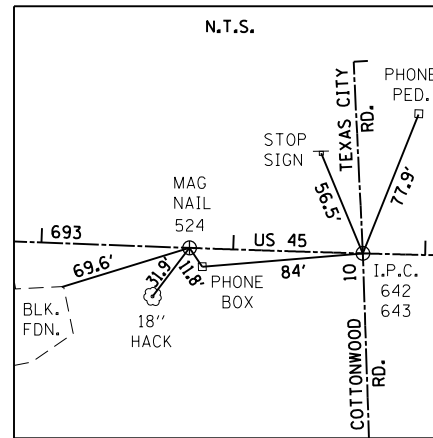


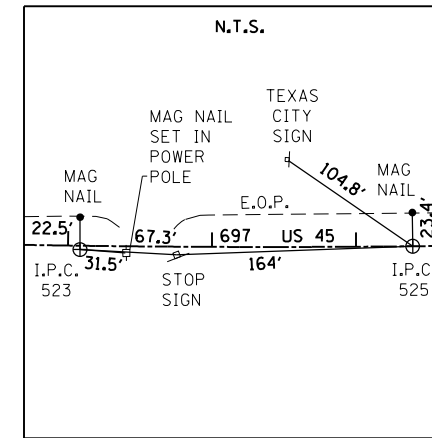
NO TIES AVAILABLE FOR THE FOLLOWING ALIGNMENT POINTS:

P.T. STA. 690+11.63 @ U.S. 45  
 N. 440,682.6767  
 E. 966,831.2914

PROP. CURVE T1  
 PI STA. = 685+99.45  
 $\Delta = 11^\circ 05' 11''$  (RT)  
 $D = 1^\circ 30' 34''$   
 $R = 3,796.00'$   
 $T = 368.40'$   
 $L = 734.50'$   
 $E = 17.83'$   
 $e = \text{-----}$   
 $T.R. = \text{-----}$   
 $S.E. RUN = \text{-----}$   
 P.C. STA = 682+31.05  
 P.T. STA = 689+65.55

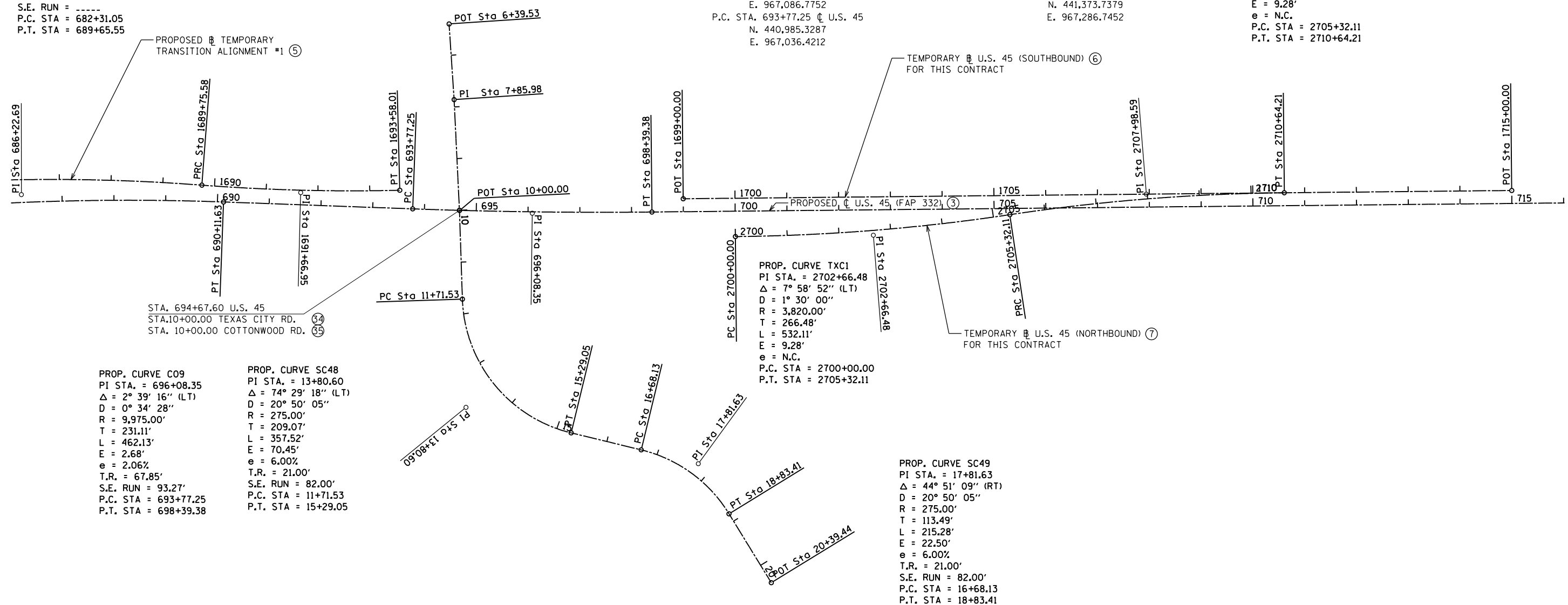


P.O.T. STA. 10+00.00 @ TEXAS CITY RD.  
 STA. 694+67.60 @ U.S. 45  
 P.O.T. STA. 10+00.00 @ COTTONWOOD RD.  
 N. 441,060.3513  
 E. 967,086.7752  
 P.C. STA. 693+77.25 @ U.S. 45  
 N. 440,985.3287  
 E. 967,036.4212



P.I. STA. 696+08.35 @ U.S. 45  
 N. 441,176.6335  
 E. 967,166.0826  
 P.T. STA. 698+39.38 @ U.S. 45  
 N. 441,373.7379  
 E. 967,286.7452

PROP. CURVE TXC2  
 PI STA. = 2707+98.59  
 $\Delta = 7^\circ 58' 52''$  (RT)  
 $D = 1^\circ 30' 00''$   
 $R = 3,820.00'$   
 $T = 266.48'$   
 $L = 532.11'$   
 $E = 9.28'$   
 $e = N.C.$   
 P.C. STA = 2705+32.11  
 P.T. STA = 2710+64.21



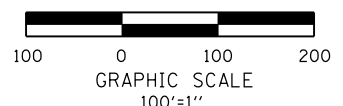
PROP. CURVE C09  
 PI STA. = 696+08.35  
 $\Delta = 2^\circ 39' 16''$  (LT)  
 $D = 0^\circ 34' 28''$   
 $R = 9,975.00'$   
 $T = 231.11'$   
 $L = 462.13'$   
 $E = 2.68'$   
 $e = 2.06\%$   
 $T.R. = 67.85'$   
 $S.E. RUN = 93.27'$   
 P.C. STA = 693+77.25  
 P.T. STA = 698+39.38

PROP. CURVE SC48  
 PI STA. = 13+80.60  
 $\Delta = 74^\circ 29' 18''$  (LT)  
 $D = 20^\circ 50' 05''$   
 $R = 275.00'$   
 $T = 209.07'$   
 $L = 357.52'$   
 $E = 70.45'$   
 $e = 6.00\%$   
 $T.R. = 21.00'$   
 $S.E. RUN = 82.00'$   
 P.C. STA = 11+71.53  
 P.T. STA = 15+29.05

PROP. CURVE TXC1  
 PI STA. = 2702+66.48  
 $\Delta = 7^\circ 58' 52''$  (LT)  
 $D = 1^\circ 30' 00''$   
 $R = 3,820.00'$   
 $T = 266.48'$   
 $L = 532.11'$   
 $E = 9.28'$   
 $e = N.C.$   
 P.C. STA = 2700+00.00  
 P.T. STA = 2705+32.11

PROP. CURVE SC49  
 PI STA. = 17+81.63  
 $\Delta = 44^\circ 51' 09''$  (RT)  
 $D = 20^\circ 50' 05''$   
 $R = 275.00'$   
 $T = 113.49'$   
 $L = 215.28'$   
 $E = 22.50'$   
 $e = 6.00\%$   
 $T.R. = 21.00'$   
 $S.E. RUN = 82.00'$   
 P.C. STA = 16+68.13  
 P.T. STA = 18+83.41

⊕ REFER TO ALIGNMENT & CURVE DATA SHEETS (TYP.)



FILE NAME =	USER NAME = bemery	DESIGNED -	REVISED -	<b>STATE OF ILLINOIS DEPARTMENT OF TRANSPORTATION</b>	<b>ALIGNMENTS &amp; TIES</b>			F.A.P. RTE. =	SECTION	COUNTY	TOTAL SHEETS	SHEET NO.
P:\Projects\2011 Projects\11297 - IDOT US 45 Ph2\CV\CADD Sheets\0978077-sht-ATB-Ties.dwg	DRAWN -	REVISED -	REVISED -		<b>U.S. 45, TEXAS CITY RD. &amp; COTTONWOOD RD.</b>			332	(29,30)R-1	SALINE	745	77
Default	PLOT SCALE = 200.0000' / in.	CHECKED -	REVISED -		SCALE: 100'-1"			SHEET 11 OF 11 SHEETS STA. TO STA.			CONTRACT NO. 78077	
	PLOT DATE = 4/30/2014	DATE -	REVISED -		ILLINOIS FED. AID PROJECT							