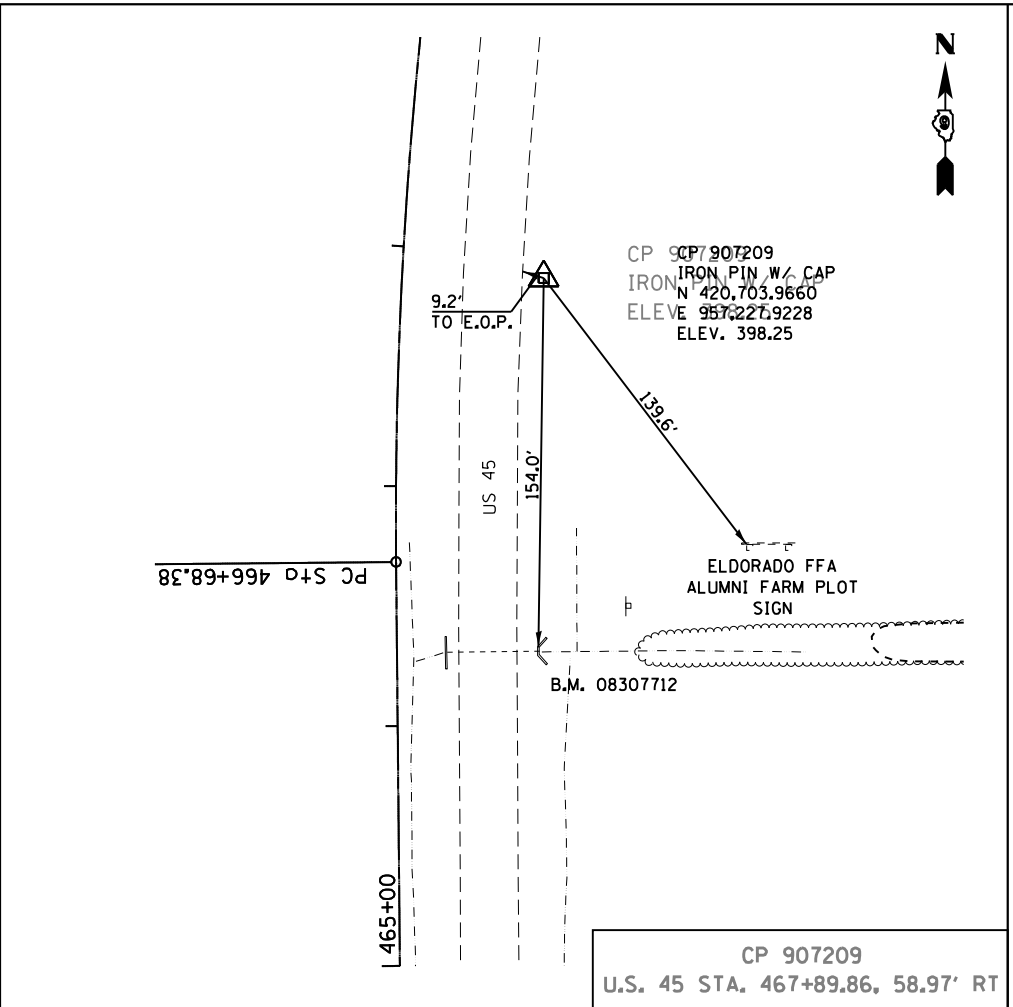
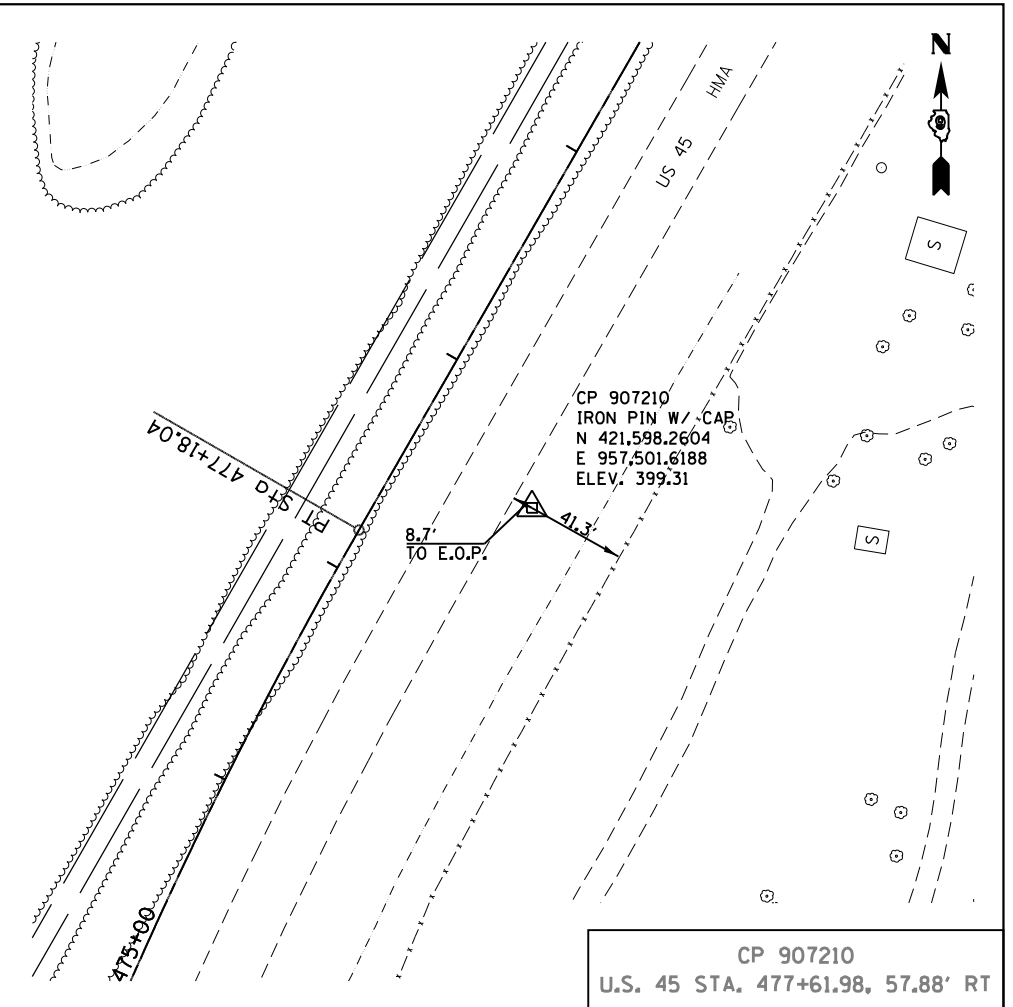


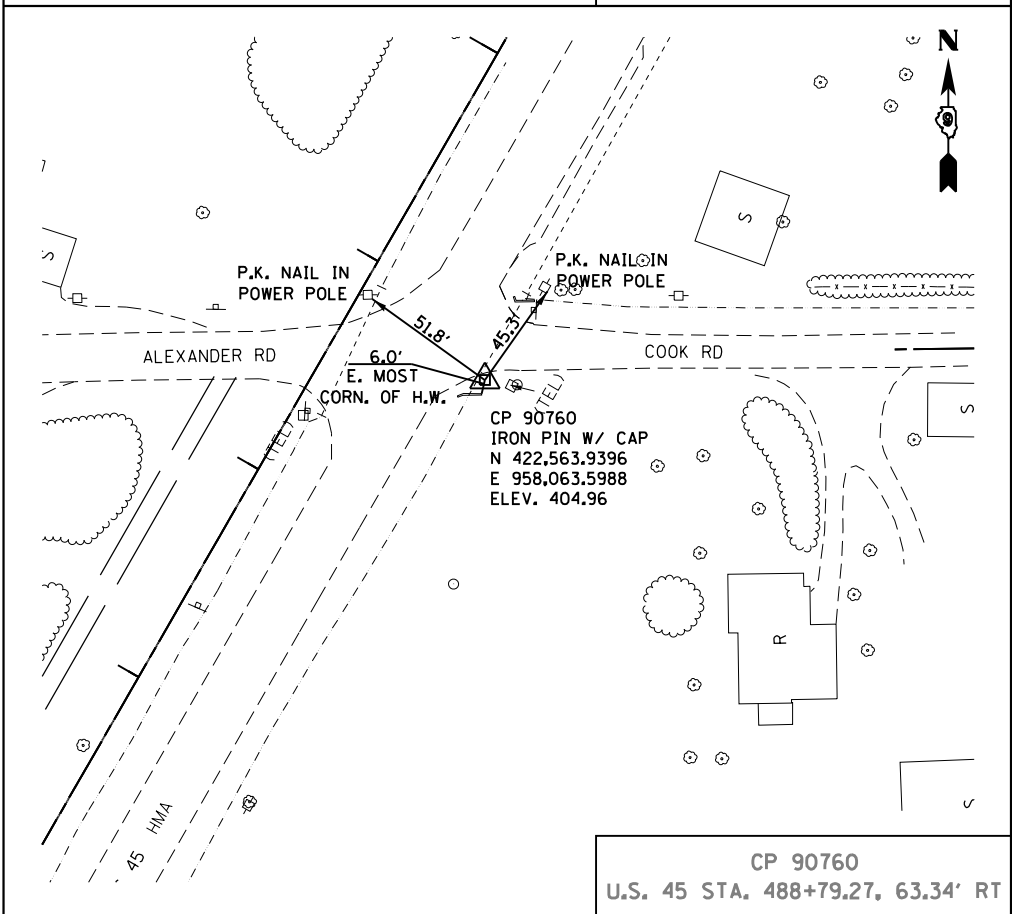
CP 90754  
U.S. 45 STA. 452+84, 42.00' LT



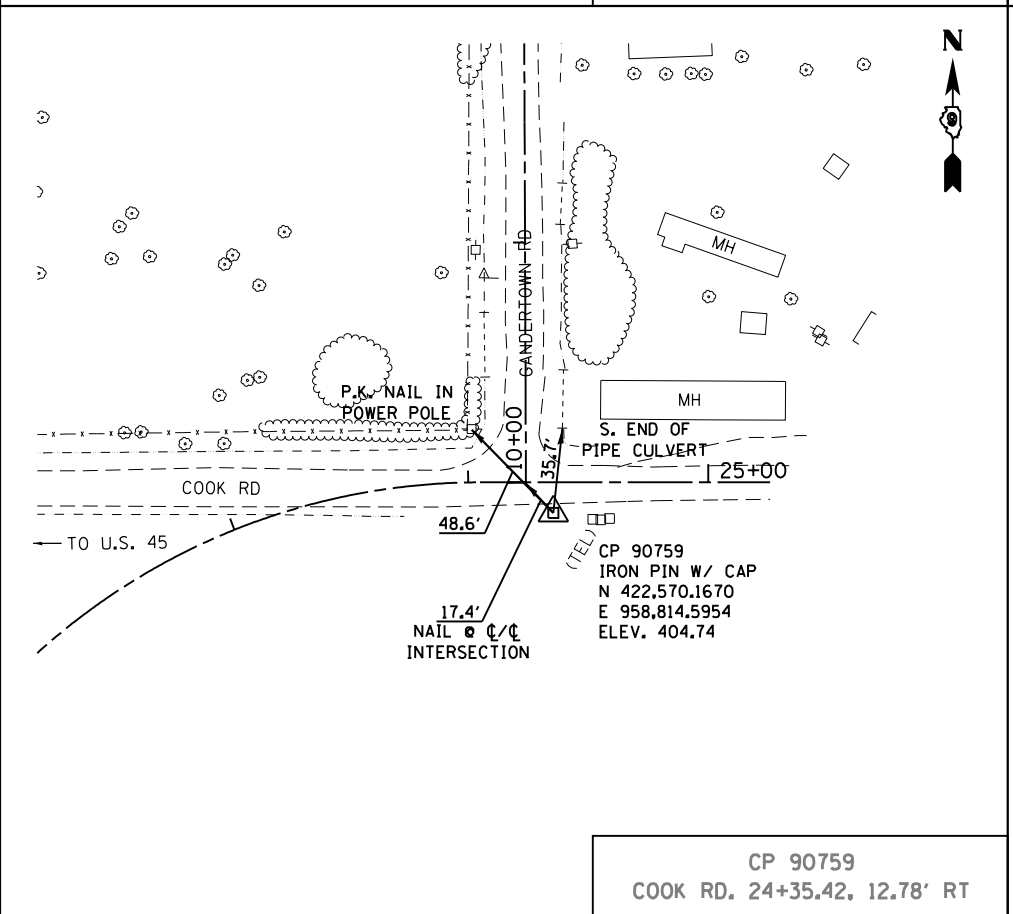
CP 907209  
U.S. 45 STA. 467+89.86, 58.97' RT



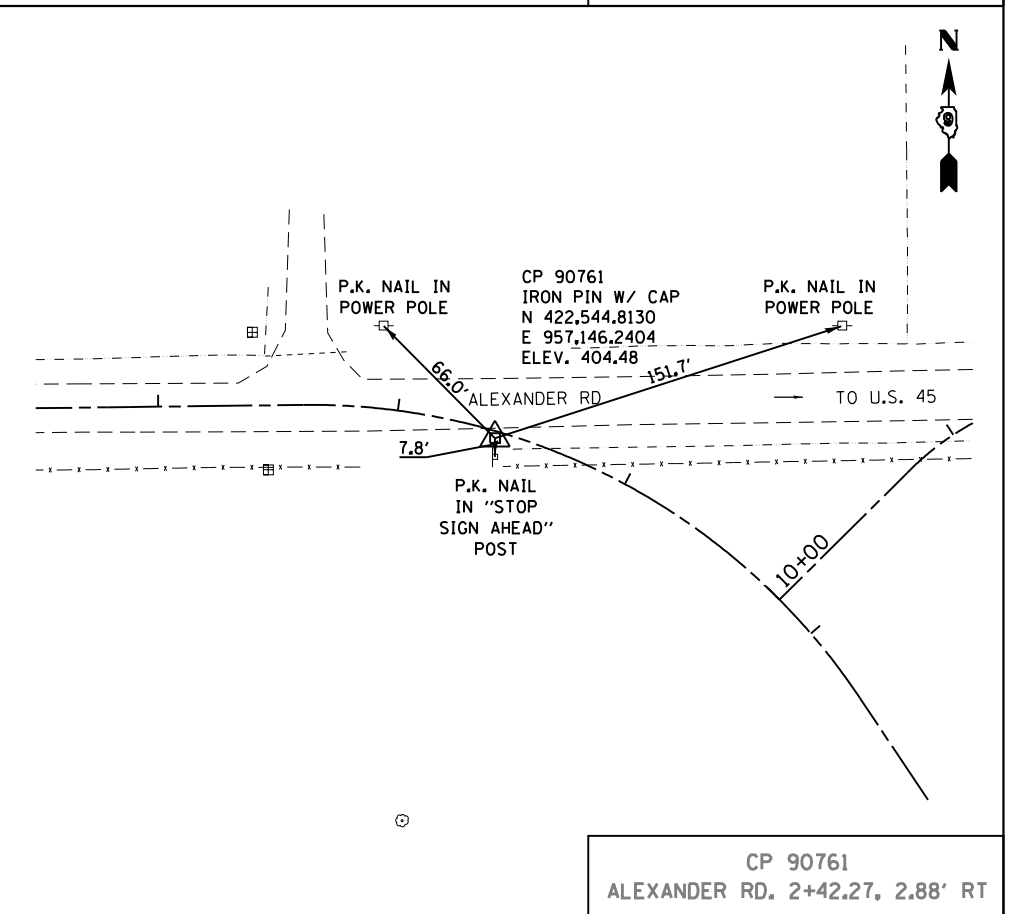
CP 907210  
U.S. 45 STA. 477+61.98, 57.88' RT



CP 90760  
U.S. 45 STA. 488+79.27, 63.34' RT



CP 90759  
COOK RD. 24+35.42, 12.78' RT



CP 90761  
ALEXANDER RD. 2+42.27, 2.88' RT

FILE NAME =	USER NAME = bemery	DESIGNED -	REVISED -
P:\Projects\2011 Projects\11297 - IDOT US 45 Ph2\CV\CADD Sheets\0978077-sht-ATB-Conto		DRAWN -	REVISED -
Default	PLOT SCALE = 80.0000' / in.	CHECKED -	REVISED -
	PLOT DATE = 4/30/2014	DATE -	REVISED -

**STATE OF ILLINOIS  
DEPARTMENT OF TRANSPORTATION**

**CONTROL POINTS**

SCALE: SHEET 2 OF 7 SHEETS STA. TO STA.

F.A.P. R.T.E.	SECTION	COUNTY	TOTAL SHEETS	SHEET NO.
332	(29,30)R-1	SALINE	745	85
CONTRACT NO. 78077				
ILLINOIS FED. AID PROJECT				