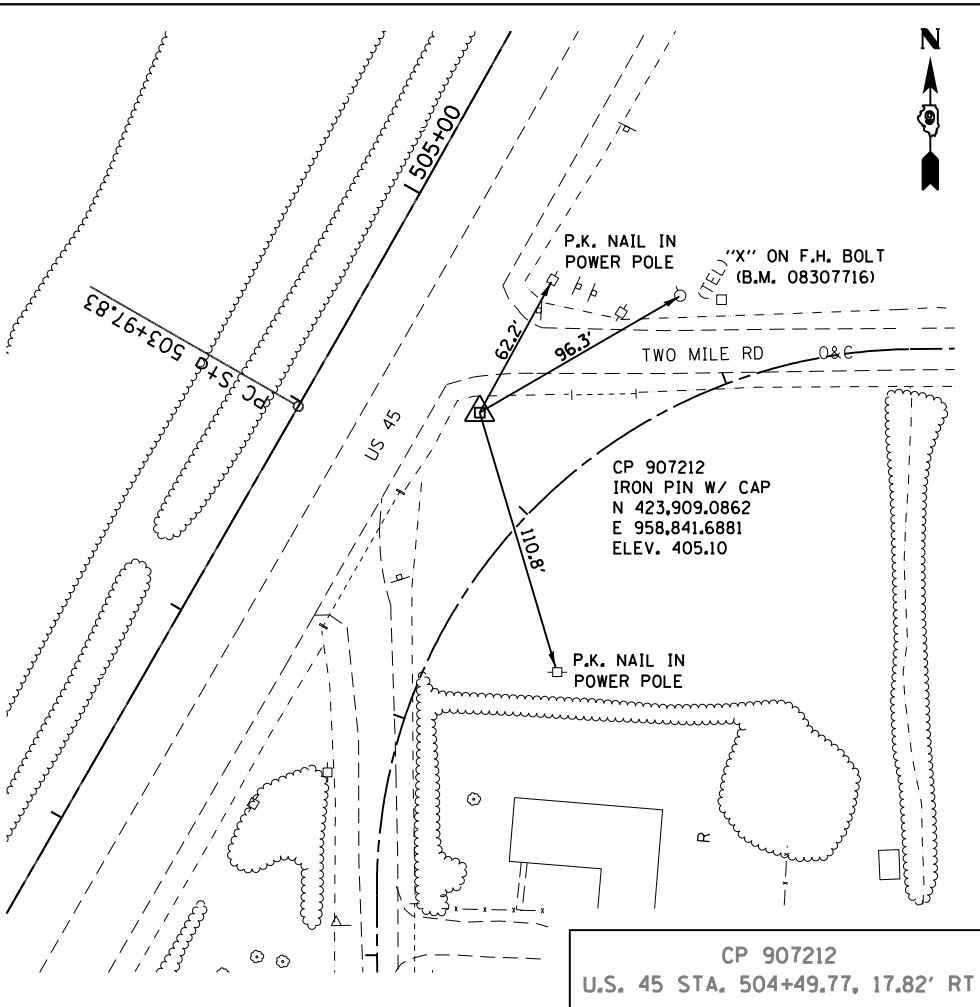
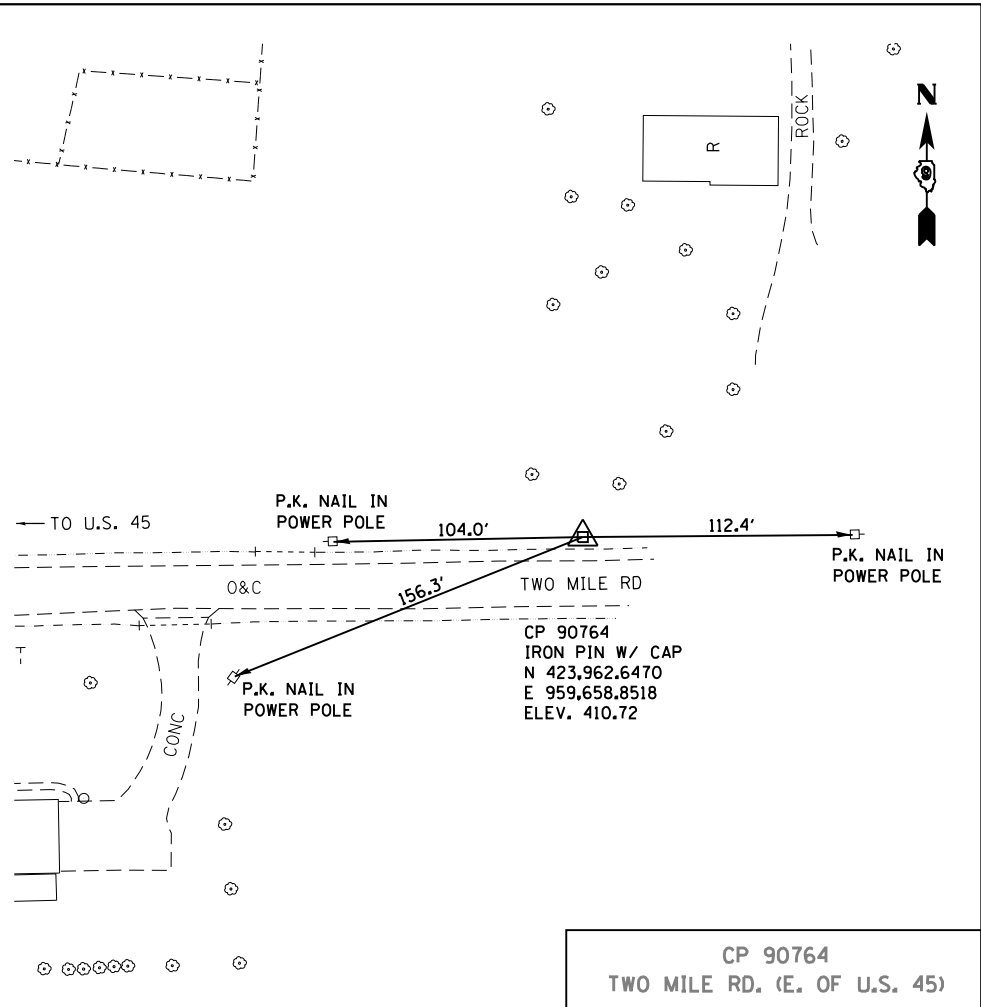


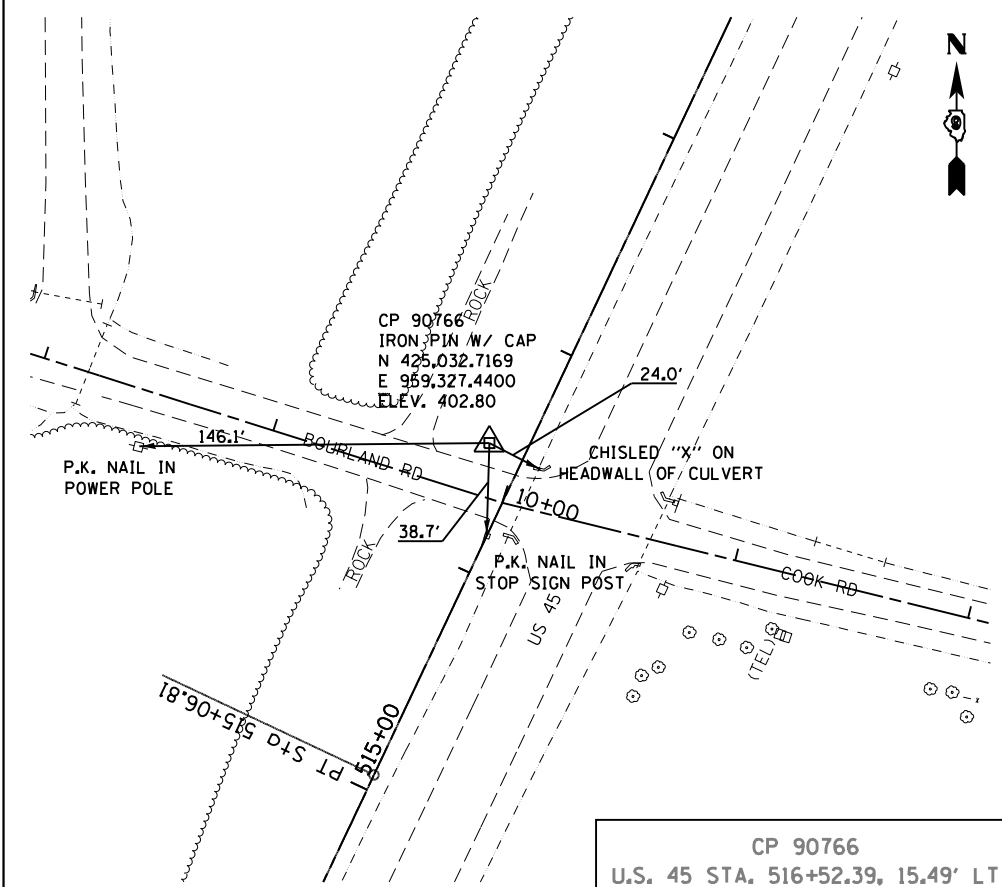
CP 907211  
U.S. 45 STA. 498+49.77, 17.82' RT



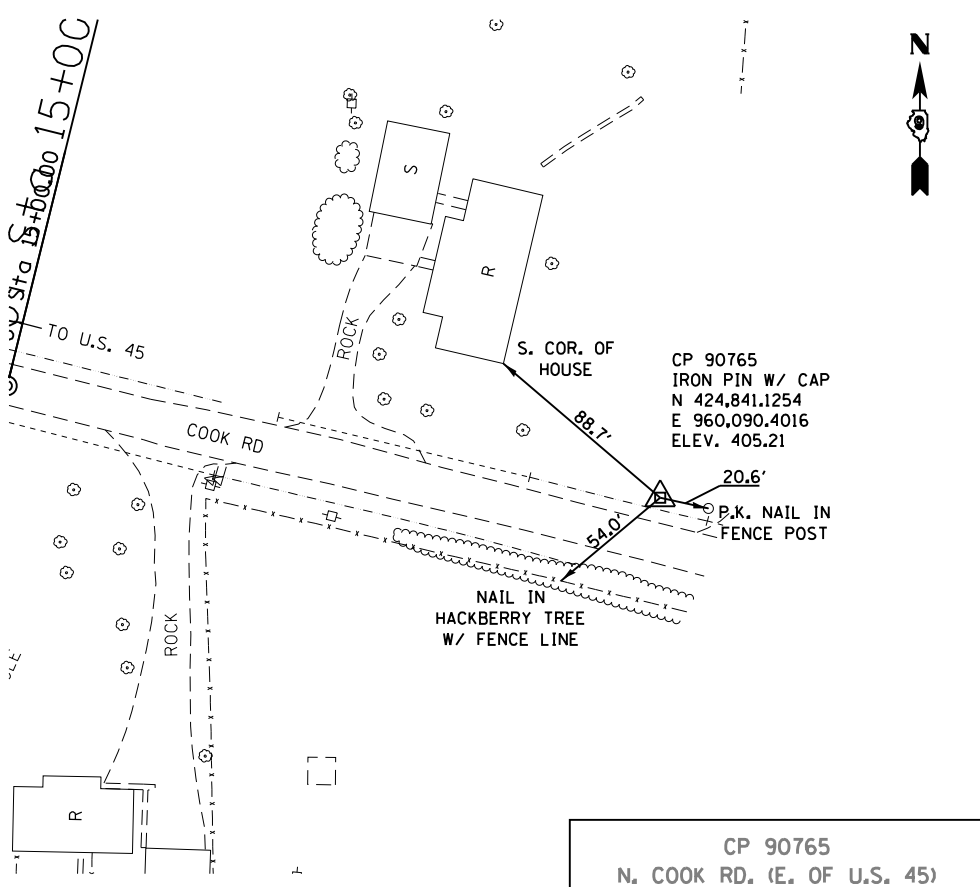
CP 907212  
U.S. 45 STA. 504+49.77, 17.82' RT



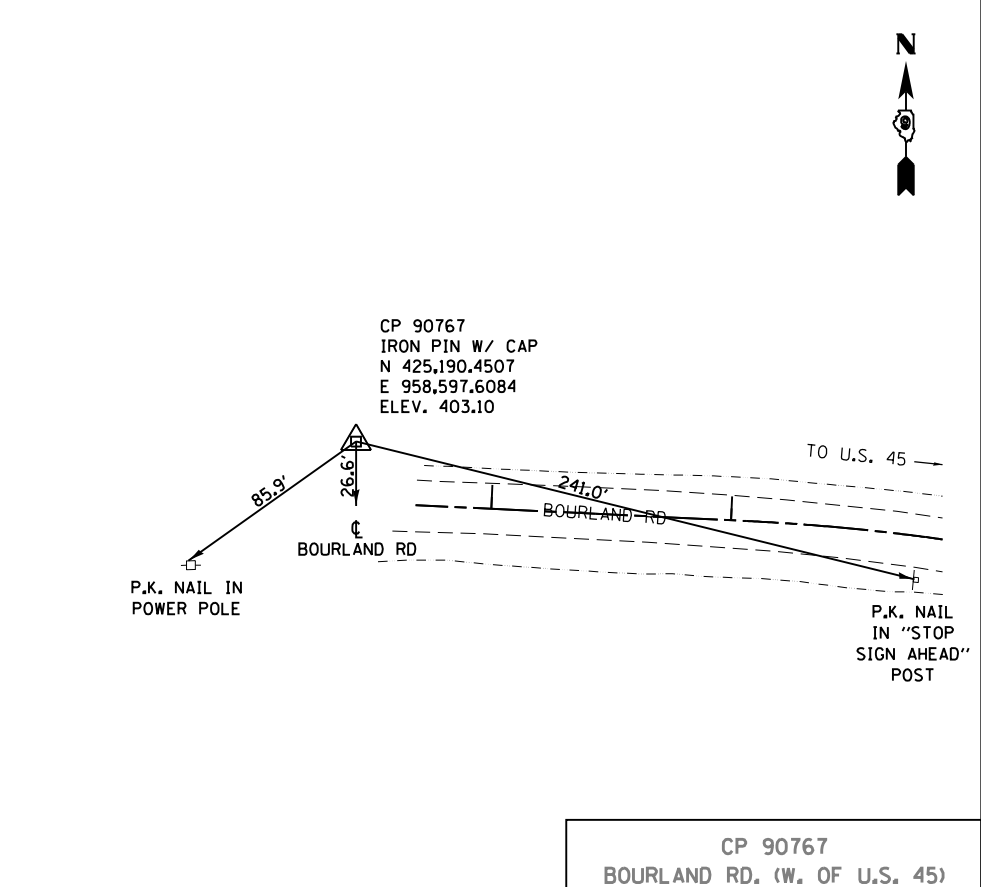
CP 90764  
TWO MILE RD. (E. OF U.S. 45)



CP 90766  
U.S. 45 STA. 516+52.39, 15.49' LT



CP 90765  
N. COOK RD. (E. OF U.S. 45)



CP 90767  
BOURLAND RD. (W. OF U.S. 45)

FILE NAME =	USER NAME = bemory	DESIGNED -	REVISED -
P:\Projects\2011 Projects\11297 - IDOT US 45 Ph2\CV\CADD Sheets\0978077-sht-ATB-Contro		DRAWN -	REVISED -
Default	PLOT SCALE = 80.0000' / in.	CHECKED -	REVISED -
	PLOT DATE = 4/30/2014	DATE -	REVISED -

**STATE OF ILLINOIS  
DEPARTMENT OF TRANSPORTATION**

<b>CONTROL POINTS</b>	
SCALE:	STATION TO STATION
SHEET 3	OF 7 SHEETS

F.A.P. RTE.	SECTION	COUNTY	TOTAL SHEETS	SHEET NO.
332	(29,30)R-1	SALINE	745	86
CONTRACT NO. 78077				
ILLINOIS FED. AID PROJECT				