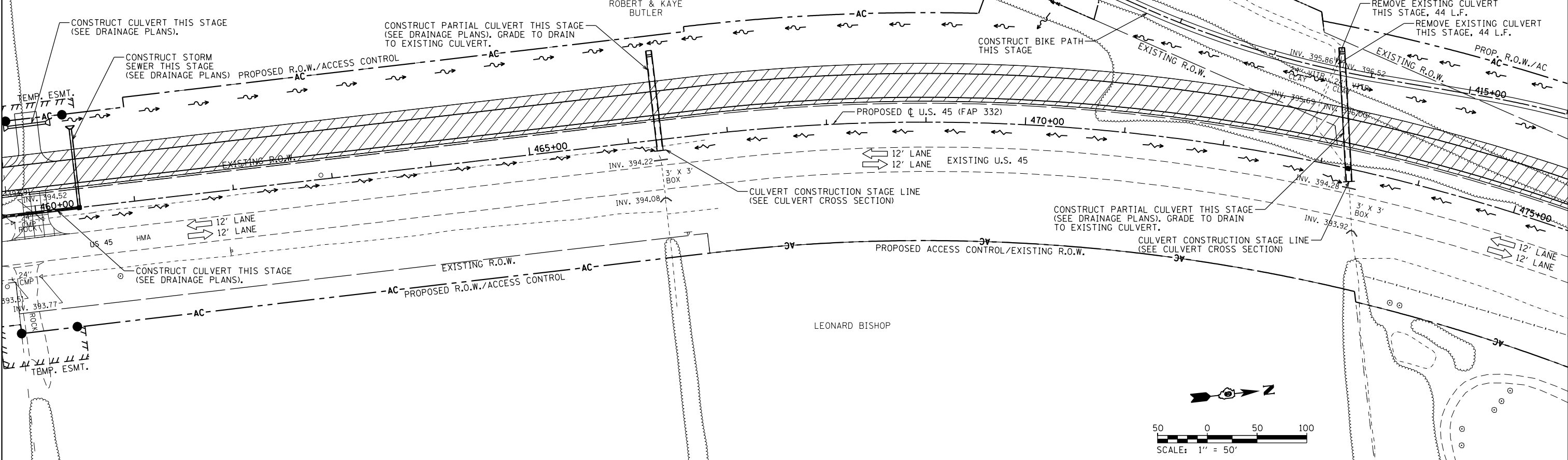


TEMPORARY PAVEMENT CONSTRUCTED AS NOTED     
 
 PERMANENT PAVEMENT CONSTRUCTED THIS STAGE     
 PERMANENT PAVEMENT CONSTRUCTED IN PREVIOUS STAGE     
 
 ROADWAY REMOVAL THIS STAGE     
 
 DIRECTION OF TRAFFIC FLOW     
 TYPE III BARRICADE     
 TEMPORARY FLOW ARROW     
 CONSTRUCTION SIGN     
 DRUMS WITH STEADY BURNING MONODIRECTIONAL LIGHTS @ 25' CENTERS     
 SIGN PANEL/BARRICADE ASSEMBLY (INCLUDED IN THE COST FOR TRAFFIC CONTROL AND PROTECTION, LUMP SUM)



FILE NAME =	USER NAME = bemory	DESIGNED -	REVISED -	<b>STATE OF ILLINOIS DEPARTMENT OF TRANSPORTATION</b>	<b>MAINTENANCE OF TRAFFIC - STAGE 1A</b>				F.A.P. R.T.E. = 332	SECTION = (29,30)R-1	COUNTY = SALINE	TOTAL SHEETS = 745	SHEET NO. = 205
P:\Projects\2011\Projects\11297 - IDOT US 45 Ph2\CV\CADD Sheets\0978077-sht-MOT-Stage1A.dgn					DRAWN -	<b>U.S. 45</b>				CONTRACT NO. 78077			
PLOT SCALE = 100.0000' / in.					CHECKED -	SCALE: 1" = 50'				SHEET OF SHEETS STA. 447+58.73 TO STA. 475+00.00			
PLOT DATE = 4/30/2014					DATE -	ILLINOIS FED. AID PROJECT							