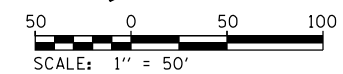
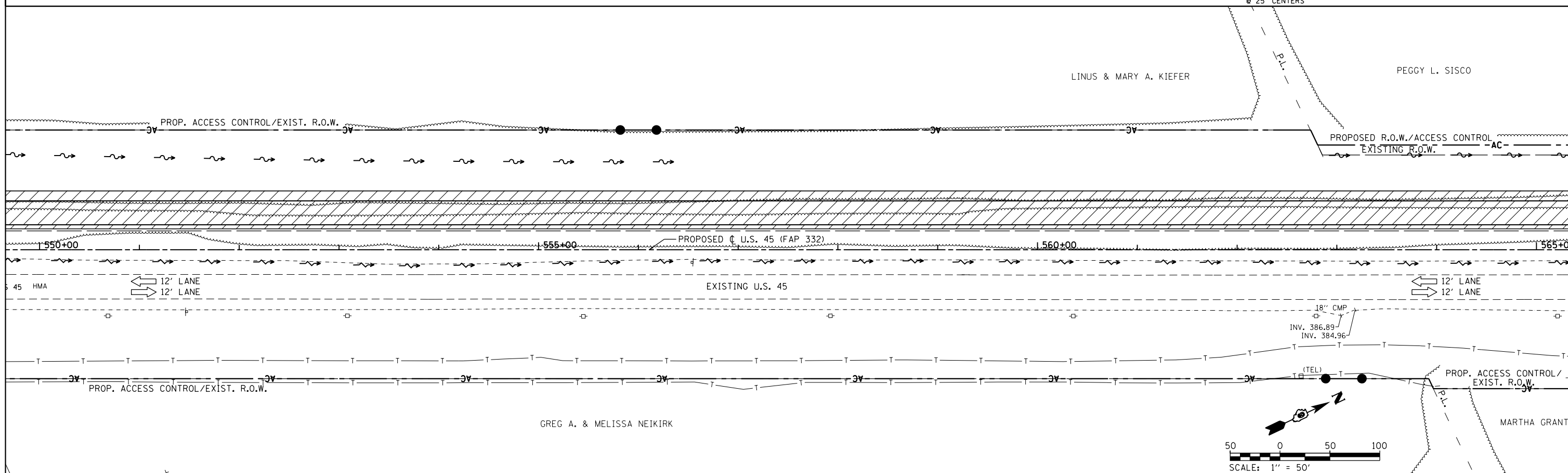


TEMPORARY PAVEMENT CONSTRUCTED AS NOTED	PERMANENT PAVEMENT CONSTRUCTED THIS STAGE	PERMANENT PAVEMENT CONSTRUCTED IN PREVIOUS STAGE	ROADWAY REMOVAL THIS STAGE	DIRECTION OF TRAFFIC FLOW	TYPE III BARRICADE	TEMPORARY FLOW ARROW	DRUMS WITH STEADY BURNING MONODIRECTIONAL LIGHTS 25' CENTERS	SIGN PANEL/BARRICADE ASSEMBLY (INCLUDED IN THE COST FOR TRAFFIC CONTROL AND PROTECTION, LUMP SUM)
				CONSTRUCTION SIGN				



FILE NAME =	USER NAME = bemery	DESIGNED -	REVISED -	STATE OF ILLINOIS DEPARTMENT OF TRANSPORTATION	MAINTENANCE OF TRAFFIC - STAGE 1A			F.A.P. RTE.	SECTION	COUNTY	TOTAL SHEETS	SHEET NO.
P:\Projects\2011 Projects\11297 - IDOT US 45 Ph2\CV\CADD Sheets\0978077-sht-MOT-Stage1A.dgn		CHECKED -	REVISED -		U.S. 45			332	(29,30)R-1	SALINE	745	208
Default	PLOT SCALE = 100.0000' / in.	DATE -	REVISED -		SCALE: 1" = 50'			SHEET OF SHEETS STA. 535+00.00 TO STA. 565+00.00			CONTRACT NO. 78077	
	PLOT DATE = 4/30/2014		REVISED -		ILLINOIS FED. AID PROJECT							