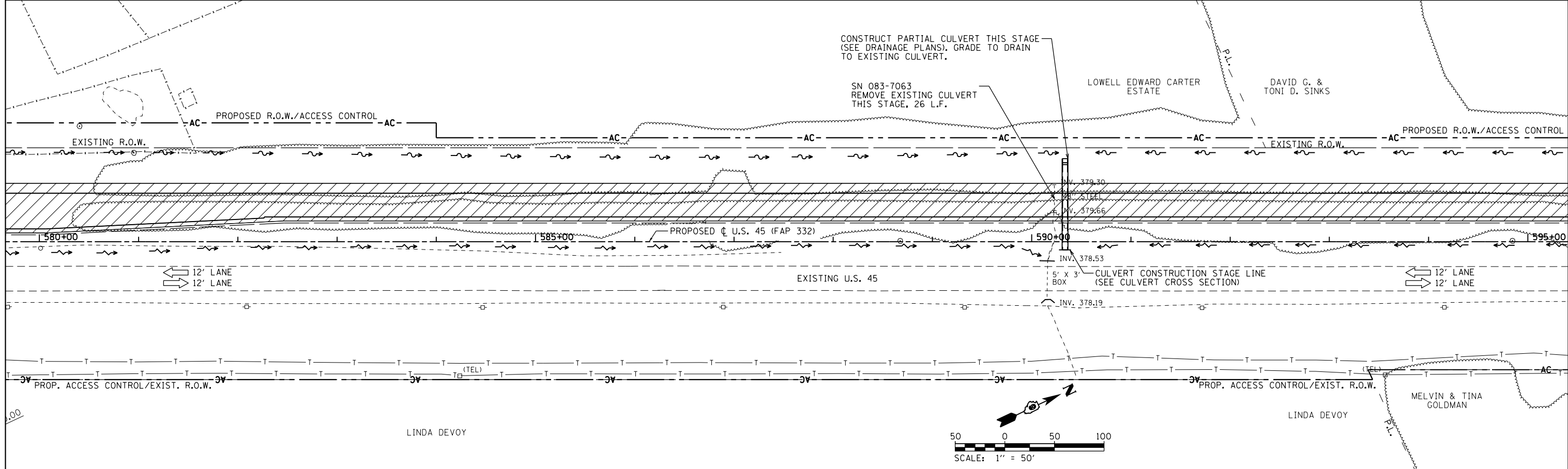


	TEMPORARY PAVEMENT CONSTRUCTED AS NOTED		PERMANENT PAVEMENT CONSTRUCTED THIS STAGE		PERMANENT PAVEMENT CONSTRUCTED IN PREVIOUS STAGE		ROADWAY REMOVAL THIS STAGE		DIRECTION OF TRAFFIC FLOW		TYPE III BARRICADE		TEMPORARY FLOW ARROW		DRUMS WITH STEADY BURNING MONODIRECTIONAL LIGHTS		SIGN PANEL/BARRICADE ASSEMBLY (INCLUDED IN THE COST FOR TRAFFIC CONTROL AND PROTECTION, LUMP SUM)
									CONSTRUCTION SIGN								



FILE NAME =	USER NAME = bemery	DESIGNED -	REVISED -	STATE OF ILLINOIS DEPARTMENT OF TRANSPORTATION	MAINTENANCE OF TRAFFIC - STAGE 1A				F.A.P. RTE.	SECTION	COUNTY	TOTAL SHEETS	SHEET NO.
P:\Projects\2011 Projects\11297 - IDOT US 45 Ph2\CV\CADD Sheets\0978077-sht-MOT-Stage1-DRAWN.dgn		CHECKED -	REVISED -		U.S. 45				332	(29,30)R-1	SALINE	745	209
Default	PLOT SCALE = 100.0000' / in.	DATE -	REVISED -		SCALE: 1" = 50'				SHEET OF SHEETS		CONTRACT NO. 78077		
	PLOT DATE = 4/30/2014				STA. 565+00.00 TO STA. 595+00.00				ILLINOIS FED. AID PROJECT				