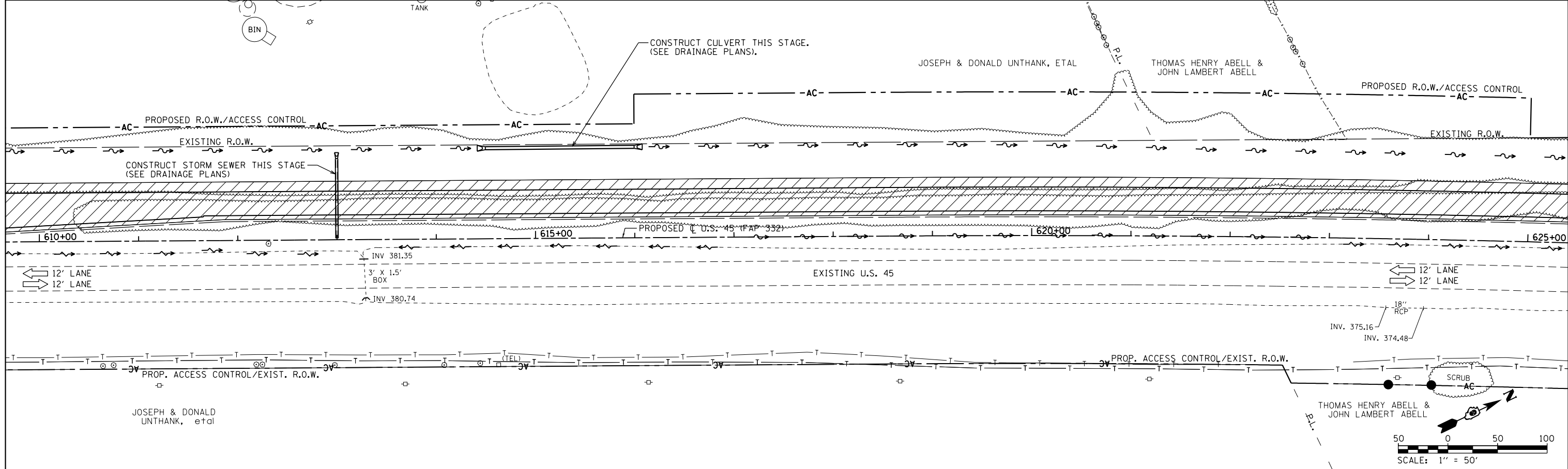


TEMPORARY PAVEMENT CONSTRUCTED AS NOTED
 PERMANENT PAVEMENT CONSTRUCTED THIS STAGE
 PERMANENT PAVEMENT CONSTRUCTED IN PREVIOUS STAGE
 ROADWAY REMOVAL THIS STAGE

DIRECTION OF TRAFFIC FLOW
 T TYPE III BARRICADE
 ~ TEMPORARY FLOW ARROW

+ CONSTRUCTION SIGN
 O DRUMS WITH STEADY BURNING MONODIRECTIONAL LIGHTS @ 25' CENTERS
 • SIGN PANEL/BARRICADE ASSEMBLY (INCLUDED IN THE COST FOR TRAFFIC CONTROL AND PROTECTION, LUMP SUM)



FILE NAME =	USER NAME = bemery	DESIGNED -	REVISED -	STATE OF ILLINOIS DEPARTMENT OF TRANSPORTATION	MAINTENANCE OF TRAFFIC - STAGE 1A U.S. 45	F.A.P. RTE. 332	SECTION (29,30)R-1	COUNTY SALINE	TOTAL SHEETS 745	SHEET NO. 210		
Default	P:\Projects\2011 Projects\11297 - IDOT US 45 Ph2\CV\CADD Sheets\0978077-sht-MOT-Stage1A.dgn	CHECKED -	REVISED -			SCALE: 1" = 50'	SHEET OF SHEETS	STA. 595+00.00	TO STA. 625+00.00	CONTRACT NO. 78077		
	PLOT SCALE = 100.0000' / in.	DATE -	REVISED -			ILLINOIS FED. AID PROJECT						