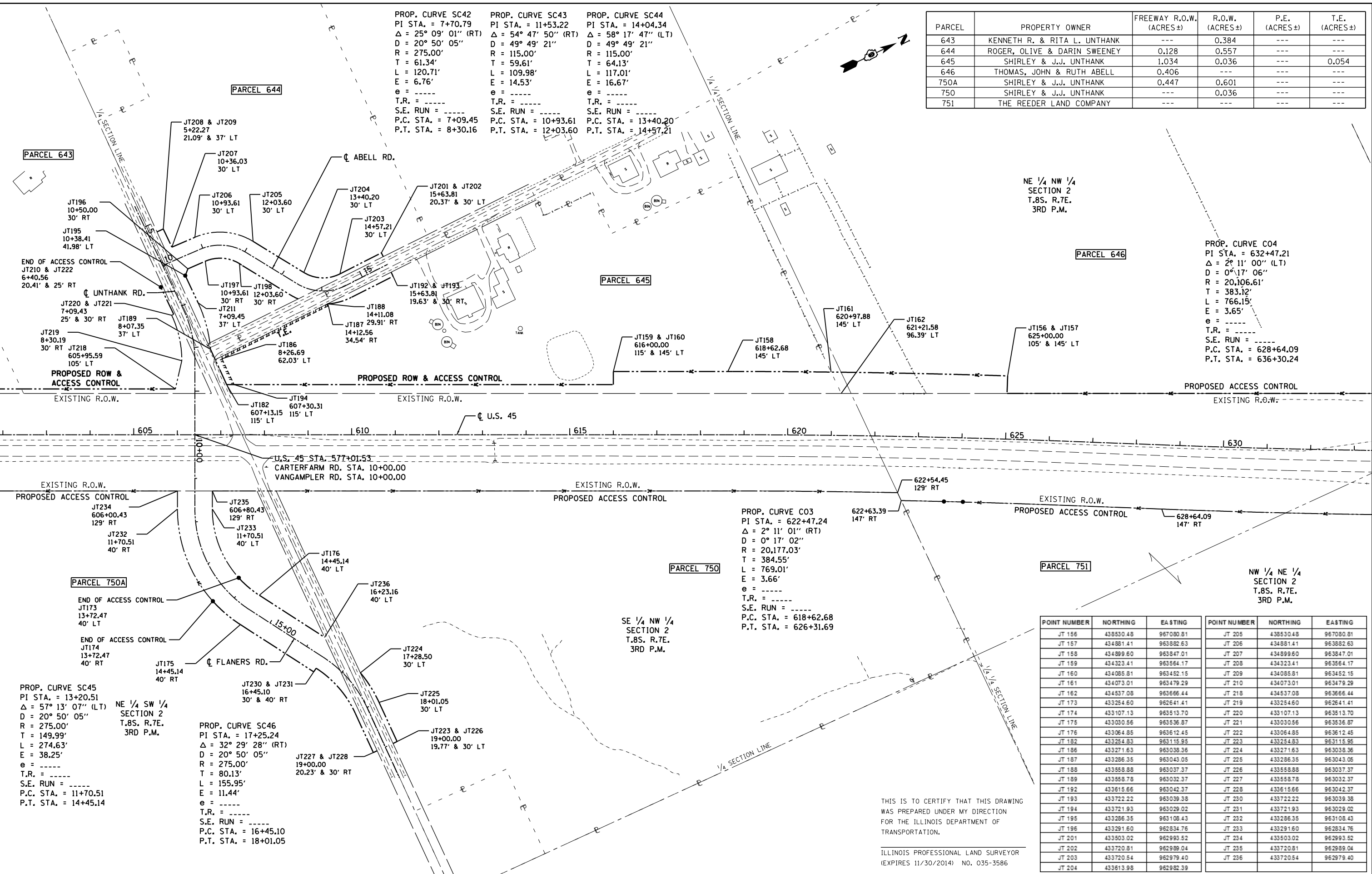


PARCEL	PROPERTY OWNER	FREEWAY R.O.W. (ACRES±)	R.O.W. (ACRES±)	P.E. (ACRES±)	T.E. (ACRES±)
643	KENNETH R. & RITA L. UNTHANK	---	0.384	---	---
644	ROGER, OLIVE & DARIN SWEENEY	0.128	0.557	---	---
645	SHIRLEY & J.J. UNTHANK	1.034	0.036	---	0.054
646	THOMAS, JOHN & RUTH ABELL	0.406	---	---	---
750A	SHIRLEY & J.J. UNTHANK	0.447	0.601	---	---
750	SHIRLEY & J.J. UNTHANK	---	0.036	---	---
751	THE REEDER LAND COMPANY	---	---	---	---



NE 1/4 NW 1/4
SECTION 2
T.8S. R.7E.
3RD P.M.

PROP. CURVE CO4
PI STA. = 632+47.21
Δ = 2° 11' 00" (LT)
D = 0° 17' 06"
R = 20,106.61'
T = 383.12'
L = 766.15'
E = 3.65'
e = ----
T.R. = ----
S.E. RUN = ----
P.C. STA. = 628+64.09
P.T. STA. = 636+30.24

PROP. CURVE CO3
PI STA. = 622+47.24
Δ = 2° 11' 01" (RT)
D = 0° 17' 02"
R = 20,177.03'
T = 384.55'
L = 769.01'
E = 3.66'
e = ----
T.R. = ----
S.E. RUN = ----
P.C. STA. = 618+62.68
P.T. STA. = 626+31.69

PROP. CURVE SC45
PI STA. = 13+20.51
Δ = 57° 13' 07" (LT)
D = 20° 50' 05"
R = 275.00'
T = 149.99'
L = 274.63'
E = 38.25'
e = ----
T.R. = ----
S.E. RUN = ----
P.C. STA. = 11+70.51
P.T. STA. = 14+45.14

PROP. CURVE SC46
PI STA. = 17+25.24
Δ = 32° 29' 28" (RT)
D = 20° 50' 05"
R = 275.00'
T = 80.13'
L = 155.95'
E = 11.44'
e = ----
T.R. = ----
S.E. RUN = ----
P.C. STA. = 16+45.10
P.T. STA. = 18+01.05

POINT NUMBER	NORTHING	EASTING	POINT NUMBER	NORTHING	EASTING
JT 156	438530.48	967080.81	JT 205	438530.48	967080.81
JT 157	434881.41	963882.63	JT 206	434881.41	963882.63
JT 158	434899.60	963847.01	JT 207	434899.60	963847.01
JT 159	434323.41	963564.17	JT 208	434323.41	963564.17
JT 160	434085.81	963452.15	JT 209	434085.81	963452.15
JT 161	434073.01	963479.29	JT 210	434073.01	963479.29
JT 162	434537.08	963666.44	JT 218	434537.08	963666.44
JT 173	433254.60	962641.41	JT 219	433254.60	962641.41
JT 174	433107.13	963513.70	JT 220	433107.13	963513.70
JT 175	433030.56	963536.87	JT 221	433030.56	963536.87
JT 176	433064.85	963612.45	JT 222	433064.85	963612.45
JT 182	433254.83	963115.95	JT 223	433254.83	963115.95
JT 186	433271.63	963038.36	JT 224	433271.63	963038.36
JT 187	433286.35	963043.05	JT 225	433286.35	963043.05
JT 188	433558.88	963037.37	JT 226	433558.88	963037.37
JT 189	433558.78	963032.37	JT 227	433558.78	963032.37
JT 192	433615.66	963042.37	JT 228	433615.66	963042.37
JT 193	433722.22	963039.38	JT 230	433722.22	963039.38
JT 194	433721.93	963029.02	JT 231	433721.93	963029.02
JT 195	433286.35	963108.43	JT 232	433286.35	963108.43
JT 196	433291.60	962834.76	JT 233	433291.60	962834.76
JT 201	433503.02	962993.52	JT 234	433503.02	962993.52
JT 202	433720.81	962989.04	JT 235	433720.81	962989.04
JT 203	433720.54	962979.40	JT 236	433720.54	962979.40
JT 204	433613.98	962982.39			

THIS IS TO CERTIFY THAT THIS DRAWING WAS PREPARED UNDER MY DIRECTION FOR THE ILLINOIS DEPARTMENT OF TRANSPORTATION.
ILLINOIS PROFESSIONAL LAND SURVEYOR (EXPIRES 11/30/2014) NO. 035-3586

FILE NAME =	USER NAME = \$USER\$	DESIGNED -	REVISED -
c:\pwork\pwork\lenderba\d0395921\078077-sht-R0Wplans.dgn		DRAWN -	REVISED -
\$MODELNAME\$	PLOT SCALE = 200.000' / in.	CHECKED -	REVISED -
	PLOT DATE = 5/2/2014	DATE -	REVISED -

STATE OF ILLINOIS
DEPARTMENT OF TRANSPORTATION

RIGHT OF WAY PLANS
U.S. 45

SCALE: SHEET OF SHEETS STA. TO STA.

F.A.P. RTE. 332	SECTION (29,30)R-1	COUNTY SALINE	TOTAL SHEETS 745	SHEET NO. 404
CONTRACT NO. 78077			ILLINOIS FED. AID PROJECT	