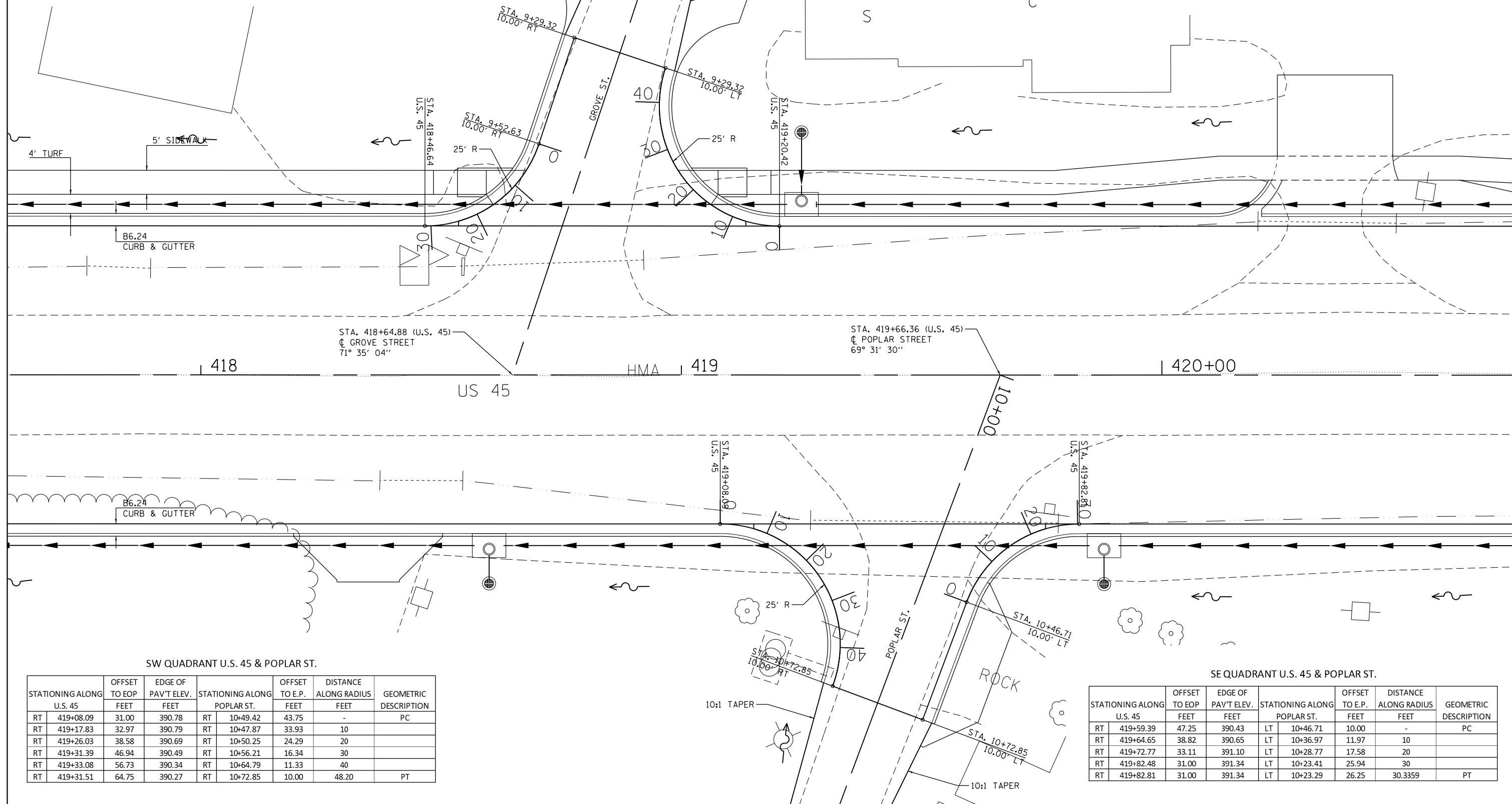


NW QUADRANT U.S. 45 & GROVE ST.

STATIONING ALONG U.S. 45	OFFSET TO EOP FEET	EDGE OF PAV'T ELEV. FEET	STATIONING ALONG GROVE ST.		OFFSET TO E.P. FEET	DISTANCE ALONG RADIUS FEET	GEOMETRIC DESCRIPTION
			RT	LT			
LT 418+70.36	48.10	389.84	RT 9+52.63		10.00	-	PC
LT 418+65.41	39.49	389.96	RT 9+62.37		11.97	10	
LT 418+57.50	33.48	390.22	RT 9+70.56		17.58	20	
LT 418+47.87	31.03	390.29	RT 9+75.93		25.94	30	
LT 418+46.64	31.00	390.29	RT 9+76.35		27.10	31.23	PT

NE QUADRANT U.S. 45 & GROVE ST.

STATIONING ALONG U.S. 45			STATIONING ALONG GROVE ST.			GEOMETRIC DESCRIPTION
OFFSET TO EOP FEET	EDGE OF PAV'T ELEV. FEET	STATIONING ALONG U.S. 45	OFFSET TO E.P. FEET	DISTANCE ALONG RADIUS FEET		
31.00	390.87	LT 419+20.42	42.90	-	PC	
32.97	390.73	LT 419+10.68	33.04	10		
38.58	390.44	LT 419+02.48	23.49	20		
46.94	390.08	LT 418+97.11	15.75	30		
56.73	389.88	LT 418+95.43	11.06	40		
63.90	389.86	LT 418+96.70	10.00	47.31	PT	



SW QUADRANT U.S. 45 & POPLAR ST.

STATIONING ALONG U.S. 45	OFFSET TO EOP FEET	EDGE OF PAV'T ELEV. FEET	STATIONING ALONG POPLAR ST.		OFFSET TO E.P. FEET	DISTANCE ALONG RADIUS FEET	GEOMETRIC DESCRIPTION
			RT	LT			
RT 419+08.09	31.00	390.78	RT 10+49.42		43.75	-	PC
RT 419+17.83	32.97	390.79	RT 10+47.87		33.93	10	
RT 419+26.03	38.58	390.69	RT 10+50.25		24.29	20	
RT 419+31.39	46.94	390.49	RT 10+56.21		16.34	30	
RT 419+33.08	56.73	390.34	RT 10+64.79		11.33	40	
RT 419+31.51	64.75	390.27	RT 10+72.85		10.00	48.20	PT

SE QUADRANT U.S. 45 & POPLAR ST.

STATIONING ALONG U.S. 45			STATIONING ALONG POPLAR ST.			GEOMETRIC DESCRIPTION
OFFSET TO EOP FEET	EDGE OF PAV'T ELEV. FEET	STATIONING ALONG U.S. 45	OFFSET TO E.P. FEET	DISTANCE ALONG RADIUS FEET		
47.25	390.43	RT 419+59.39	10.00	-	PC	
38.82	390.65	RT 419+64.65	11.97	10		
33.11	391.10	RT 419+72.77	17.58	20		
31.00	391.34	RT 419+82.48	25.94	30		
31.00	391.34	RT 419+82.81	26.25	30.3359	PT	

FILE NAME =	USER NAME = bemery	DESIGNED -	REVISED -
P:\Projects\2011 Projects\11297 - IDOT US 45 Ph2\CV\CADD Sheets\0978077-sht-geometric		DRAWN -	REVISED -
Default	PLOT SCALE = 20.000' / in.	CHECKED -	REVISED -
	PLOT DATE = 4/30/2014	DATE -	REVISED -

STATE OF ILLINOIS
DEPARTMENT OF TRANSPORTATION

GROVE ST. & POPLAR ST.
INTERSECTION GEOMETRICS

SCALE: 1" = 10' SHEET OF SHEETS STA. TO STA.

F.A.P. RTE. 332	SECTION (29,30)R-1	COUNTY SALINE	TOTAL SHEETS 745	SHEET NO. 446
CONTRACT NO. 78077				
ILLINOIS FED. AID PROJECT				