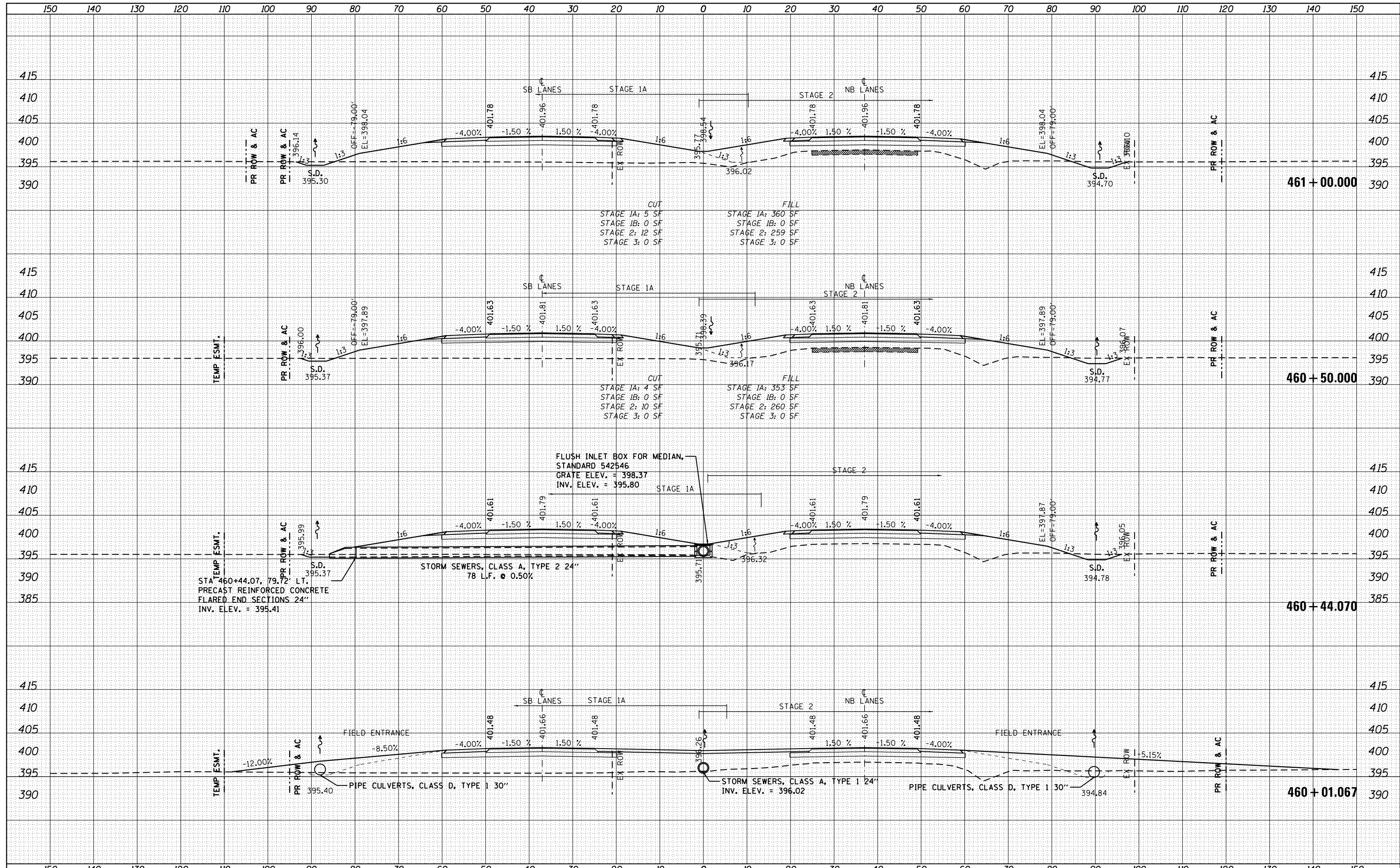


DATE	
BY	
FINAL SURVEY	
PLOTTED	
TEMPLATE	
NOTE BOOK	
AREAS CHECKED	

DATE	
BY	
ORIGINAL SURVEY	
PLOTTED	
TEMPLATE	
NOTE BOOK	
AREAS CHECKED	



FILE NAME =	USER NAME = bemory	DESIGNED -	REVISED -	<b>STATE OF ILLINOIS</b> <b>DEPARTMENT OF TRANSPORTATION</b>	<b>CROSS SECTIONS U.S. 45 (F.A.P. 332)</b>			F.A.P. RTE. 332	SECTION (29,30)R-1	COUNTY SALINE	TOTAL SHEETS 745	SHEET NO. 537
P:\Projects\2011 Projects\11297 - IDOT US45 Ph2\CV\CADD Sheets\0978077-sht-xsc.dgn		DRAWN -	REVISED -		SCALE: 1" = 10'	SHEET	OF	SHEETS	STA. 460+01.067	TO STA. 461+00.000	CONTRACT NO. 78077	
PLOT SCALE = 20.0000' / in.		CHECKED -	REVISED -		ILLINOIS FED. AID PROJECT							
PLOT DATE = 4/30/2014		DATE -	REVISED -									