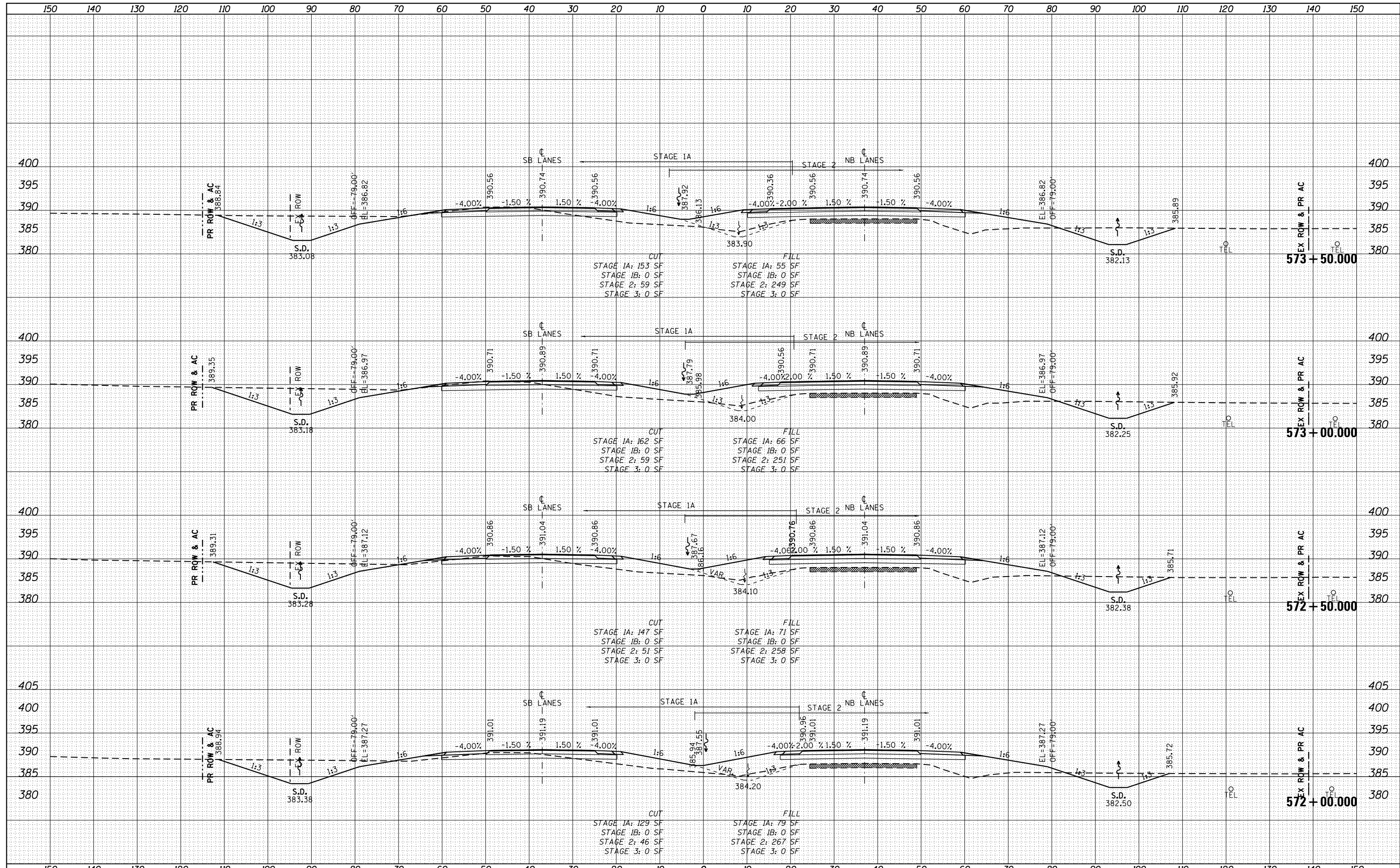


DATE	
BY	
FINAL SURVEY	SURVEYED
NOTE BOOK	PLOTTED
NO.	TEMPLATE
	AREAS
	CHECKED

DATE	
BY	
ORIGINAL SURVEY	SURVEYED
NOTE BOOK	PLOTTED
NO.	TEMPLATE
	AREAS
	CHECKED



FILE NAME =	USER NAME = bemery	DESIGNED -	REVISED -	STATE OF ILLINOIS DEPARTMENT OF TRANSPORTATION CROSS SECTIONS U.S. 45 (F.A.P. 332) SCALE: 1" = 10' SHEET OF SHEETS STA. 572+00.000 TO STA. 573+50.000	F.A.P. RTE.	SECTION	COUNTY	TOTAL SHEETS	SHEET NO.
P:\Projects\2011 Projects\11297 - IDOT US45 Ph2	CV\CADD Sheets\0978077-sht-xsc.dgn	DRAWN -	REVISED -		332	(29,30)R-1	SALINE	745	598
Default	PLOT SCALE = 20.0000' / in.	CHECKED -	REVISED -		CONTRACT NO. 78077				
	PLOT DATE = 4/30/2014	DATE -	REVISED -		ILLINOIS FED. AID PROJECT				