

STATE OF ILLINOIS
DEPARTMENT OF TRANSPORTATION
DIVISION OF HIGHWAYS
PROPOSED
HIGHWAY PLANS

FOR INDEX OF SHEETS, SEE SHEET NO. 3

TOWNSHIPS: DENNING, EWING

FAI 57/FAP 873 (I-57/L 149)
SECTION: D9 CM PATCH 2015-3

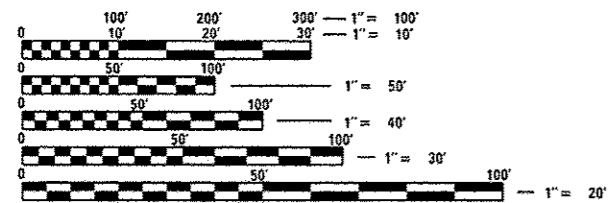
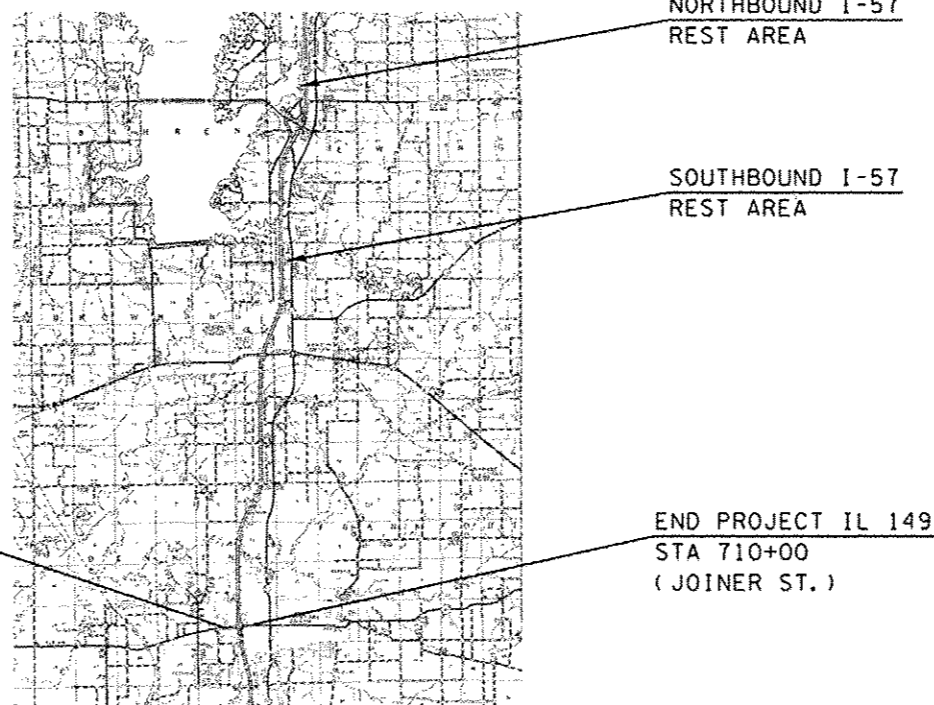
PATCHING & RESURFACING
FRANKLIN COUNTY

C-99-056-14

F.A. RTE.	SECTION	COUNTY	TOTAL SHEETS	SHEET NO.
•	D9 CM PATCH 2015-3	FRANKLIN	9	1
		ILLINOIS	CONTRACT NO. 78427	

•FAI 57 FAP 873

D-99-047-14



FULL SIZE PLANS HAVE BEEN PREPARED USING STANDARD ENGINEERING SCALES. REDUCED SIZED PLANS WILL NOT CONFORM TO STANDARD SCALES. IN MAKING MEASUREMENTS ON REDUCED PLANS, THE ABOVE SCALES MAY BE USED.

J.U.L.I.E.
 JOINT UTILITY LOCATION INFORMATION FOR EXCAVATION
 1-800-892-0123
 OR 811

PROJECT ENGINEER VALERIE ROLLA (618)351-5214
 PROJECT MANAGER CHARLES STEIN (618)351-5210

CONTRACT NO. 78427

IL 149 GROSS LENGTH = 3852 FT. = 0.73 MILE
 IL 149 NET LENGTH = 3852 FT. = 0.73 MILE

STATE OF ILLINOIS
 DEPARTMENT OF TRANSPORTATION
 DIVISION OF HIGHWAYS

SUBMITTED May 15 20 14

Jeffrey Keen
 DEPUTY DIRECTOR OF HIGHWAYS, REGION ENGINEER

June 27 20 14
John D. Baranzelli, PE, Jr.
 acting ENGINEER OF DESIGN AND ENVIRONMENT

June 27 20 14
Omer Osman, PE, Jr.
 DIRECTOR OF HIGHWAYS, CHIEF ENGINEER

PRINTED BY THE AUTHORITY
OF THE STATE OF ILLINOIS

INDEX OF SHEETS

SHEET NO.	DESCRIPTION
1	COVER SHEET
2	SIGNATURE SHEET
3	INDEX OF SHEETS, HIGHWAY STANDARDS, GENERAL NOTES & MIX DESIGN
4-5	SUMMARY OF QUANTITIES
6	TYPICAL SECTIONS
7	NB I-57 RESTA REA PLAN
8	SB I-57 RESTA REA PLAN
9	DISTRICT DETAILS

STANDARDS

000001-06	STANDARD SYMBOLS, ABBREVIATIONS, AND PATTERNS
420001-07	PAVEMENT JOINTS
420101-04	24' (7.2M) JOINTED PCC PAVEMENT
420701-02	PAVEMENT FABRIC
442101-07	CLASS B PATCHING
606001-05	CONCRETE CURB TYPE B & COMBINATION CONCRETE CURB & GUTTER
701502-06	URBAN LANE CLOSURE, 2L, 2W, WITH BIDIRECTIONAL LEFT TURN LANE
701601-09	URBAN LANE CLOSURE, MULTILANE, 1W OR 2W WITH NONTRAVERSABLE MEDIAN
701701-09	URBAN LANE CLOSURE, MULTILANE INTERSECTION
701427-02	LANE CLOSURE, MULTILANE INTERMITTENT OR MOVING OPER., FOR SPEEDS < 40 MPH
701901-03	TRAFFIC CONTROL DEVICES

GENERAL NOTES

FACTORS USED FOR ESTIMATING PLAN QUANTITIES ARE AS FOLLOWS AND SHALL NOT BE USED FOR THE BASIS OF FINAL QUANTITIES:

ALL HOT-MIX ASPHALT	2.016 TONS/CU YD
ALL AGGREGATE	2.05 TONS/CU YD

AT ALL LOCATIONS WHERE THE PROPOSED HOT MIX ASPHALT OR CONCRETE PAVEMENT JOINS AN EXISTING HOT MIX ASPHALT OR CONCRETE PAVEMENT, A FULL DEPTH SAWED JOINT SHALL BE CONSTRUCTED. THE COST OF THIS JOINT WILL BE INCLUDED IN THE COST OF THE TYPE OF PAVEMENT BEING CONSTRUCTED.

THE CONTRACTOR SHALL STAMP STATIONING IN THE CONCRETE PAVEMENT AT 100 m (300 FT.) INTERVALS ON THE OUTSIDE EDGE OF PAVEMENT AND AS DIRECTED BY THE ENGINEER. THE STATION SYMBOL STAMPS USED SHALL BE FURNISHED BY THE CONTRACTOR. THEY SHALL BE 140 mm (5 1/2 IN.) TALL OF A DESIGN APPROVED BY THE ENGINEER, AND SHALL REMAIN THE PROPERTY OF THE CONTRACTOR.

IN ADDITION TO THE REQUIREMENTS OF ARTICLE 107.16 THE CONTRACTOR SHALL PROTECT THE SURFACE OF ALL BRIDGE DECKS AND BRIDGE APPROACH PAVEMENTS IN A MANNER SATISFACTORY TO THE ENGINEER BEFORE ANY EQUIPMENT IS ALLOWED TO CROSS THE STRUCTURE. PROTECTION SHALL BE PROVIDED FOR ALL EQUIPMENT AS DEFINED IN ARTICLE 101.17 REGARDLESS IF TRACK MOUNTED OR WHEELED.

COMMITMENTS:
NONE

MIX DESIGN

Location(s):	Partial Depth Patching
Mixture Use(s)	Hot-Mix Asphalt Surface Course, Mix D, N90
AC/PG	PG64-22
ABR% (Max):	See Special Provision
Design Air Voids:	4.0%, 90 Gyration Design
Mixture Composition: (Gradation Mixture)	IL-9.5 mm
Friction Aggregate:	D Surface
Quality Management Program:	QCQA

FILE NAME #	USER NAME # USER#	DESIGNED -	REVISED -	STATE OF ILLINOIS DEPARTMENT OF TRANSPORTATION	INDEX, HIGHWAY STANDARDS GENERAL NOTES, MIX DESIGN	F.A. RTE.	SECTION	COUNTY	TOTAL SHEETS	SHEET NO.	
ev\p4_work\pavidot\col\mm\20380003\7842	shh-plan.dgn	DRAWN -	REVISED -			•	D9 CM PATCH 2015-3	FRANKLIN	9	3	
#MODELNAME#	PLOT SCALE = 100.0000 / 1"	CHECKED -	REVISED -			CONTRACT NO. 78427					
	PLOT DATE = 5/16/2014	DATE -	REVISED -			SCALE:	SHEET	OF	SHEETS	STA.	TO STA.

SUMMARY OF QUANTITIES

LOCATION:	URBAN	RURAL
COUNTY:	FRANKLIN	
ROUTE:	IL 149	I-57
FUNDING:	100% STATE	100% STATE
	ROADWAY 0005	ROADWAY 0004

CODE NUMBER	ITEM DESCRIPTION	UNIT	TOTAL QUANTITY	ROADWAY 0005	ROADWAY 0004
20200100	EARTH EXCAVATION	CU YD	92.0	0.0	92.0
31100100	SUBBASE GRANULAR MATERIAL, TYPE A	TON	273.0	0.5	272.5
31100910	SUBBASE GRANULAR MATERIAL, TYPE A 12"	SQ YD	92.0	0.3	91.7
42000501	PORTLAND CEMENT CONCRETE PAVEMENT 10" (JOINTED)	SQ YD	1196.0	0.0	1196.0
42001200	PAVEMENT FABRIC	SQ YD	49.0	49.0	0.0
44000100	PAVEMENT REMOVAL	SQ YD	1196.0	0.0	1196.0
44000500	COMBINATION CURB AND GUTTER REMOVAL	FOOT	115.0	0.0	115.0
44200970	CLASS B PATCHES, TYPE II, 10 INCH	SQ YD	411.0	411.0	0.0
44200974	CLASS B PATCHES, TYPE III, 10 INCH	SQ YD	22.0	22.0	0.0
44200976	CLASS B PATCHES, TYPE IV, 10 INCH	SQ YD	27.0	27.0	0.0
44201299	DOWEL BARS 1 1/2"	EACH	1040.0	1040.0	0.0
44213200	SAW CUTS	FOOT	2844.0	2844.0	0.0
44213204	TIE BARS 3/4"	EACH	692.0	20.0	672.0

FILE NAME =	USER NAME = #USER#	DESIGNED -	REVISED -	STATE OF ILLINOIS DEPARTMENT OF TRANSPORTATION	SUMMARY OF QUANTITIES	F.A. RTE.	SECTION	COUNTY	TOTAL SHEETS	SHEET NO.
0:\p\work\p\idat\colonn\0200003\7842	shh-plan.dgn	DRAWN -	REVISED -			*	D9 CM PATCH 2015-3	FRANKLIN	9	4
	PLOT SCALE = 1/20.000 1/1 in.	CHECKED -	REVISED -							
#MODELNAME#	PLOT DATE = 5/16/2014	DATE -	REVISED -							
					SCALE:	SHEET	OF	SHEETS	STA.	TO STA.
					ILLINOIS FED. AIG PROJECT *FAI 57 FAP 873					

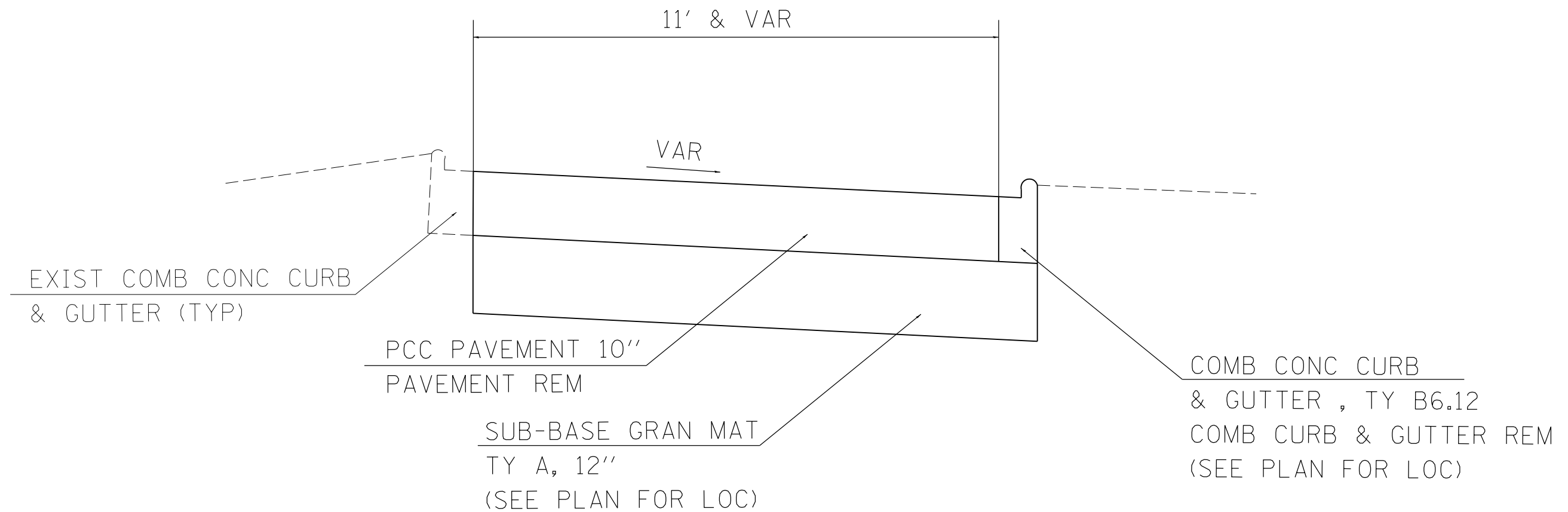
SUMMARY OF QUANTITIES - CONT

LOCATION:	URBAN	RURAL
COUNTY:	FRANKLIN	
ROUTE:	IL 149	I-57
FUNDING:	100% STATE	100% STATE
	ROADWAY	ROADWAY
	0005	0004

CODE NUMBER	ITEM DESCRIPTION	UNIT	TOTAL QUANTITY	URBAN ROADWAY	RURAL ROADWAY
60603800	COMBINATION CONCRETE CURB AND GUTTER, TYPE B-6.12	FOOT	115.0	0.0	115.0
67100100	MOBILIZATION	L SUM	1.0	0.5	0.5
70102622	TRAFFIC CONTROL AND PROTECTION, STANDARD 701502	L SUM	1.0	1.0	0.0
70102630	TRAFFIC CONTROL AND PROTECTION, STANDARD 701601	L SUM	1.0	1.0	0.0
70102635	TRAFFIC CONTROL AND PROTECTION, STANDARD 701701	L SUM	1.0	1.0	0.0
70106800	CHANGEABLE MESSAGE SIGN	CAL MO	1.0	1.0	0.0
X4406020	PARTIAL DEPTH REMOVAL, TYPE I, 2"	SO YD	91.0	91.0	0.0
X4406220	PARTIAL DEPTH REMOVAL, TYPE II, 2"	SO YD	12.0	12.0	0.0
X4421000	PARTIAL DEPTH PATCHING	TON	11.0	11.0	0.0

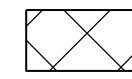
FILE NAME =	USER NAME = *USER*	DESIGNED -	REVISED -	STATE OF ILLINOIS DEPARTMENT OF TRANSPORTATION	SUMMARY OF QUANTITIES			F.A. RTE.	SECTION	COUNTY	TOTAL SHEETS	SHEET NO.	
en:\work\p\idat\colenn\0308083\7842	-shk-plandgn	DRAWN -	REVISED -		SCALE:	SHEET	OF	SHEETS	STA.	TO STA.	FRANKLIN	9	5
	PLOT SCALE = 100,0000 1/4 in.	CHECKED -	REVISED -		CONTRACT NO. 78427								
#MODELNAME#	PLOT DATE = 5/18/2014	DATE -	REVISED -		ILLINOIS FED. AID PROJECT								

TYPICAL SECTION NORTHBOUND & SOUTHBOUND REST AREA

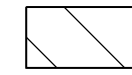


*IF ADDITIONAL SUBBASE IS NEEDED IT WILL BE PAID FOR BY THE TON AS SUBBASE GRANULAR MATERIAL TYPE A

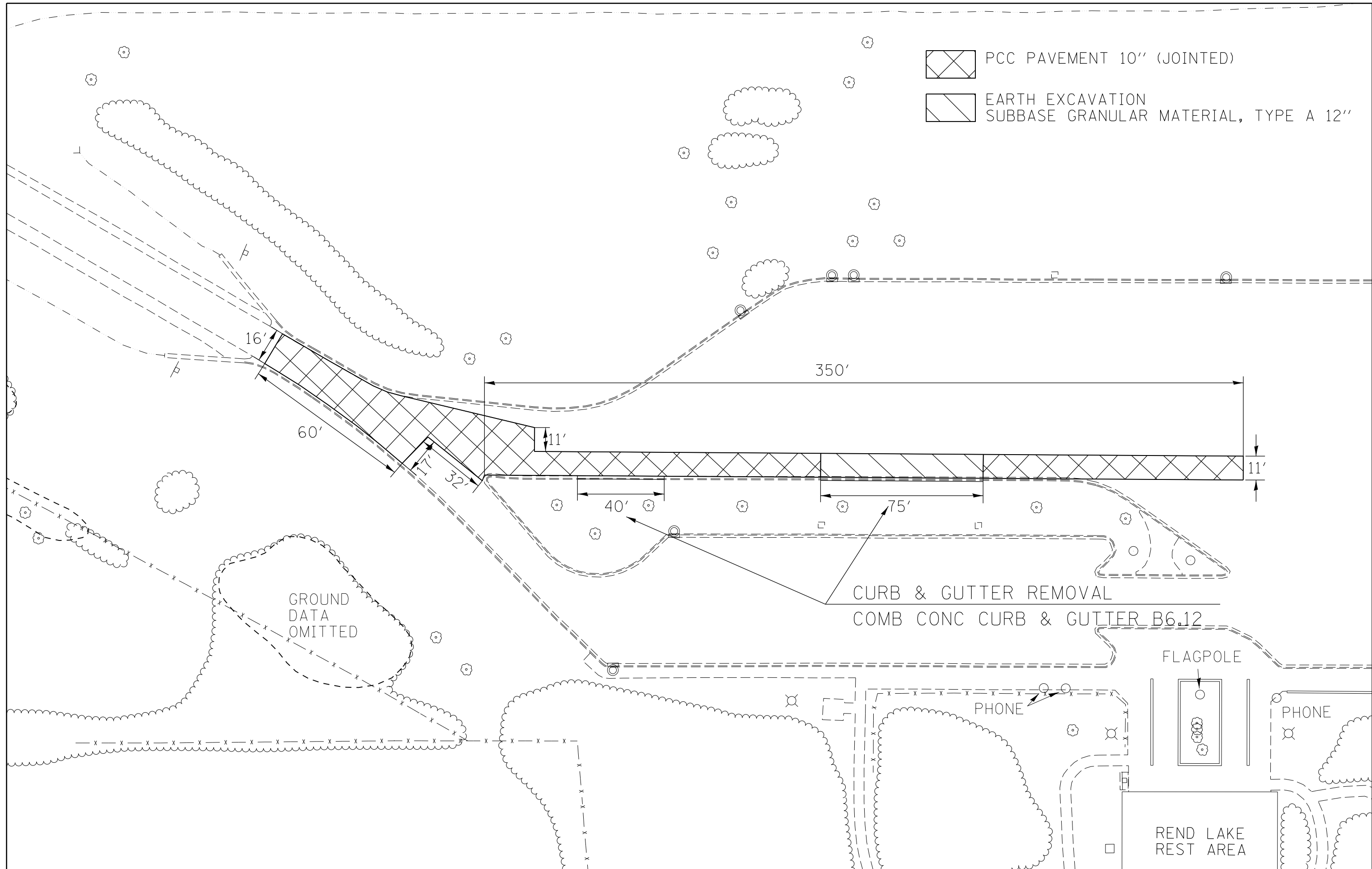
FILE NAME =	USER NAME = \$USER*	DESIGNED -	REVISED -	STATE OF ILLINOIS DEPARTMENT OF TRANSPORTATION	TYPICAL SECTION			F.A. RTE.	SECTION	COUNTY	TOTAL SHEETS	SHEET NO.	
ci:\pw\work\p1dot\colemm\d038883\78427-sh-t-plan.dgn		DRAWN -	REVISED -										
\$MODELNAME*	PLOT SCALE = 100.0000' / 1in.	CHECKED -	REVISED -			SCALE:	SHEET	OF	SHEETS	STA.	TO	STA.	
	PLOT DATE = 5/16/2014	DATE -	REVISED -										



PCC PAVEMENT 10'' (JOINTED)



EARTH EXCAVATION
SUBBASE GRANULAR MATERIAL, TYPE A 12''



FILE NAME =	USER NAME = \$USER\$	DESIGNED -	REVISED -
c:\pwork\pwork\collem\0388883\78427-sh1-plen.dgn		DRAWN -	REVISED -
\$MODELNAME\$	PLOT SCALE = 40.0000' / in.	CHECKED -	REVISED -
	PLOT DATE = 5/16/2014	DATE -	REVISED -

**STATE OF ILLINOIS
DEPARTMENT OF TRANSPORTATION**

**NORTHBOUND I-57
REST AREA**

SCALE: SHEET OF SHEETS STA. TO STA.

F.A. RTE.	SECTION	COUNTY	TOTAL SHEETS	SHEET NO.
D9 CM PATCH 2015-3		FRANKLIN	9	7
ILLINOIS FED. AID PROJECT			CONTRACT NO. 78427	

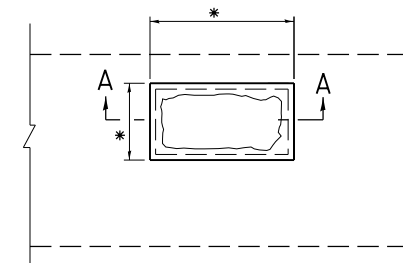


PCC PAVEMENT 10" (JOINTED)

FILE NAME = c:\pwwork\pwwork\columm\d0388883\78427-sh1-pln.dgn	USER NAME = \$USER\$	DESIGNED -	REVISED -	STATE OF ILLINOIS DEPARTMENT OF TRANSPORTATION	SOUTHBOUND I-57 REST AREA				F.A. RTE.	SECTION	COUNTY	TOTAL SHEETS	SHEET NO.	
\$MODELNAME\$	PLOT SCALE = 40.0000' / in.	DRAWN -	REVISED -		SCALE:	SHEET	OF	SHEETS	STA.	TO STA.	D9 CM PATCH 2015-3	FRANKLIN	9	8
	PLOT DATE = 5/16/2014	CHECKED -	REVISED -		ILLINOIS FED. AID PROJECT									
		DATE -	REVISED -		CONTRACT NO. 78427									

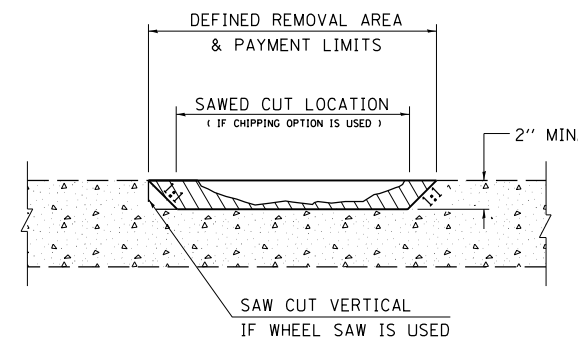
*FAI 57 FAP 873

DETAILS OF HOT-MIX ASPHALT PATCHING-PARTIAL DEPTH



PLAN

* LIMITS OF PARTIAL DEPTH PATCHING AS DIRECTED BY THE ENGINEER.



SECTION A-A

NOTES:

THE DIAMETER OF THE MILLING MACHINE SHALL BE OF SUFFICIENT SIZE TO MAINTAIN THE 1:1 SIDE SLOPE.

THIS ITEM WILL BE PAID FOR AT THE CONTRACT UNIT PRICE PER SQUARE YARD FOR **PARTIAL DEPTH REMOVAL** OF THE TYPE AND DEPTH SPECIFIED; AND THE CONTRACT UNIT PRICE PER TON FOR **PARTIAL DEPTH PATCHING**

REVISIONS	
DRAWN	10-4-91
REVISED	01-11-07
REVISED	3-26-08
REVISED	

STD. 9-91

FILE NAME =	USER NAME = \$USER*	DESIGNED -	REVISED -
c:\pwork\pwork\colemm\d038883\78427-sh-t-plan.dgn		DRAWN -	REVISED -
\$MODELNAME*	PLOT SCALE = 100.0000' / in.	CHECKED -	REVISED -
	PLOT DATE = 5/16/2014	DATE -	REVISED -

**STATE OF ILLINOIS
DEPARTMENT OF TRANSPORTATION**

HMA PATCH-PARTIAL DEPTH DETAIL

SCALE: SHEET OF SHEETS STA. TO STA.

F.A. RTE.	SECTION	COUNTY	TOTAL SHEETS	SHEET NO.
*	D9 CM PATCH 2015-3	FRANKLIN	9	9
CONTRACT NO.			78427	
ILLINOIS FED. AID PROJECT				

*FAI 57 FAP 873