

8. HAZARDOUS MATERIALS (HAZMAT) MANAGEMENT

1. THE CONTRACTOR SHALL DEVELOP A HAZMAT MANAGEMENT PLAN AND KEEP COPIES ON THE JOBSITE OF MATERIAL SAFETY DATA SHEETS (MSDS) FOR ALL MATERIALS HANDLED ON THE JOBSITE.

9. NOTIFICATION OF CONSTRUCTION ACTIVITIES

1. THE CONTRACTOR SHALL PROVIDE A 24 HOUR EMERGENCY CONTACT PERSON AND PHONE NUMBER.
2. THE CONTRACTOR SHALL GIVE A MINIMUM OF 72 HOURS NOTICE TO AIRPORT OPERATIONS PRIOR TO CLOSING ANY PAVEMENTS SO THAT PROPER NOTAMS MAY BE ISSUED BY THE AIRPORT.
3. FOR ANY EQUIPMENT USED BY THE CONTRACTOR WITH A HEIGHT GREATER THAN 20', THE CONTRACTOR SHALL PROVIDE TO THE AIRPORT THE TYPE OF EQUIPMENT, TOTAL HEIGHT, AND LOCATION WHERE THE EQUIPMENT WILL BE USED. THE AIRPORT WILL SUBMIT FAA FORM 7460-1 TO THE FAA FOR AN AIRSPACE STUDY. NO EQUIPMENT WITH A HEIGHT GREATER THAN 20' SHALL BE USED UNTIL A DETERMINATION FROM FAA IS RECEIVED.
4. IN THE EVENT OF AN EMERGENCY, THE CONTRACTOR SHALL CALL 911.
5. CONTACTS FOR THIS PROJECT ARE AS LISTED BELOW.

PUBLIC SAFETY
DENNIS SCHIPPER – CHIEF OF PUBLIC SAFETY (618) 566-5225

ENGINEERING & PLANNING
DAN TRAPP, P.E. – AIRPORT ENGINEER (618) 566-5322

AIRPORT MAINTENANCE
BRIAN GIESEKING – MAINTENANCE SUPERVISOR (618) 566-5211

ENGINEER
BRIAN GARKIE, P.E. – PROJECT ENGINEER (314) 571-9070
CHAD GILBERT – RESIDENT ENGINEER (618) 514-1726

10. INSPECTION REQUIREMENTS

1. THE CONTRACTOR SHALL INSPECT THE JOBSITE DAILY TO ENSURE COMPLIANCE WITH THE CSPP. THE CHECKLIST FOUND IN APPENDIX 3 OF FAA AC 150/5370-2F MAY BE USED TO AID IN THE INSPECTIONS.
2. THE CONTRACTOR SHALL ATTEND A FINAL INSPECTION OF EACH PHASE WORK AREA PRIOR TO OPENING THE AREA TO AIRPORT OPERATIONS.

11. UNDERGROUND UTILITIES

1. IT WILL BE NECESSARY FOR THE CONTRACTOR TO MAKE HIS OWN FIELD INVESTIGATION TO DETERMINE THE EXACT LOCATION OF THE UNDERGROUND UTILITIES AT CRITICAL POINTS. THE LOCATION OF UNDERGROUND UTILITIES AS INDICATED ON THE PLANS HAS BEEN OBTAINED FROM EXISTING RECORDS. NEITHER THE OWNER NOR THE ENGINEER ASSUMES ANY RESPONSIBILITY IN RESPECT TO THE ACCURACY, COMPLETENESS OR SUFFICIENCY OF THE INFORMATION.
2. BEFORE INITIATING ANY DIGGING, DRILLING OR EXCAVATING ON THE AIRPORT PROPERTY, THE CONTRACTOR SHALL CALL J.U.L.I.E. AND CONTACT THE LOCAL FAA OFFICE TO ARRANGE FOR UTILITY LOCATES. SEE SECTION 70-17 OF THE SPECIAL PROVISIONS FOR UTILITY CONTACT INFORMATION.

12. PENALTIES

1. NONCOMPLIANCE BY THE CONTRACTOR WITH AIRPORT RULES AND REGULATIONS OR FAILURE TO COMPLY WITH THE AIRPORT'S APPROVED CSPP AND THE CONTRACTOR'S APPROVED SPCD MAY RESULT IN FINES AS ALLOWED BY LAW.

13. SPECIAL CONDITIONS

1. THE CONTRACTOR'S OPERATIONS SHALL NOT BLOCK ACCESS TO THE NOVEMBER APRON FOR SCHEDULED PASSENGER FLIGHT SERVICE.
2. ALL CONTRACTOR PERSONNEL SHALL BE EASILY IDENTIFIED BY WEARING A HIGH VISIBILITY SHIRT OR VEST OF THE SAME COLOR AS THE OUTERMOST LAYER OF CLOTHING.
3. CONTRACTOR SHALL SUBMIT LOCK-OUT/TAG-OUT PROCEDURE PLAN OR FOLLOW AIRPORT'S PROCEDURES.

14. RUNWAY AND TAXIWAY VISUAL AIDS

1. RUNWAY/TAXIWAY CLOSURES ARE REQUIRED FOR THIS PROJECT. THE CONTRACTOR SHALL USE MARKING, LIGHTING AND SIGNS THAT FOLLOWING THE REQUIREMENTS OF FAA AC 150/5370-2F.
2. BARRICADES SHALL BE USED AS SHOWN ON THE CONSTRUCTION ACTIVITY PLAN SHEETS.

15. MARKING AND SIGNS FOR ACCESS ROUTES

1. BARRICADES AND SIGNS SHALL BE USED ALONG THE CONTRACTOR'S ACCESS ROUTE AS DETAILED ON THIS SHEET AND THE CONSTRUCTION ACTIVITY PLAN SHEETS.

16. HAZARD MARKING AND LIGHTING

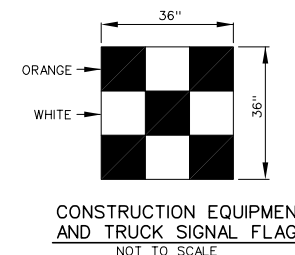
1. THE CONTRACTOR SHALL FURNISH, ERECT, AND MAINTAIN MARKINGS AND ASSOCIATED LIGHTING OF OPEN TRENCHES, EXCAVATIONS, TEMPORARY STOCKPILES, AND HIS/HER CONSTRUCTION EQUIPMENT.
2. ALL CONSTRUCTION EQUIPMENT SHALL BE FLAGGED AND/OR LIGHTED IN ACCORDANCE WITH FAA ADVISORY CIRCULAR 150/5370-2F AND 150/5210-5C AT ALL TIMES WHILE OPERATING ON AIRPORT PROPERTY. THE MAXIMUM EQUIPMENT HEIGHT IS 20'.
3. BARRICADES SHALL BE PLACED AT THE LOCATIONS SHOWN ON THE CONSTRUCTION ACTIVITY PLAN SHEET OR AS DIRECTED BY THE ENGINEER. THE AIRPORT WILL SUPPLY UP TO FIFTY (50) LOW PROFILE BARRICADES FOR USE DURING THE PROJECT. THE CONTRACTOR SHALL PROVIDE SOLAR POWERED RED LED LIGHTS FOR THE BARRICADES. THE CONTRACTOR WILL BE RESPONSIBLE FOR MAINTENANCE OF THE BARRICADES INCLUDING REPLACEMENT OF LIGHTS. IF ADDITIONAL LOW PROFILE BARRICADES ARE NEEDED, THE CONTRACTOR SHALL SUPPLY THE ADDITIONAL LOW PROFILE BARRICADES AT NO ADDITIONAL COST TO THE CONTRACT. UPON COMPLETION OF THE PROJECT, THE CONTRACTOR WILL RETAIN POSSESSION OF ANY ADDITIONAL BARRICADES SUPPLIED BY THE CONTRACTOR. THE BARRICADES SUPPLIED BY THE AIRPORT SHALL REMAIN PROPERTY OF THE AIRPORT AND SHALL BE RETURNED IN LIKE CONDITION WITH AN ALLOWANCE FOR NORMAL WEAR AND TEAR AS DETERMINED BY THE ENGINEER. ANY DAMAGED BARRICADES SHALL BE REPLACED BY THE CONTRACTOR WITH NEW BARRICADES OF SIMILAR TYPE AND DESIGN AT NO ADDITIONAL COST TO THE CONTRACT.
4. THE CONTRACTOR SHALL INSPECT THE BARRICADES ONCE DURING EACH WORK DAY TO INSURE PROPER PLACEMENT AND PROPER OPERATION OF THE RED LIGHTS.
5. THE CONTRACTOR SHALL BE RESPONSIBLE FOR FUELING RUNWAY CLOSURE MARKERS. BIODIESEL FUEL SHALL NOT BE USED FOR MARKERS.

17. PROTECTION

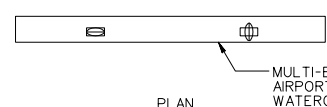
1. NO WORK SHALL BE PERFORMED/REQUIRED INSIDE OF THE ACTIVE RUNWAY 14L-32R SAFETY AREA WHICH EXTENDS 250' FROM THE RUNWAY CENTERLINE.
2. NO WORK SHALL BE PERFORMED/REQUIRED INSIDE OF AN ACTIVE TAXIWAY OBJECT FREE AREA WHICH EXTENDS 160' FROM THE TAXIWAY CENTERLINE FOR GROUP V AIRCRAFT AND 129.5' FROM THE TAXIWAY CENTERLINE FOR GROUP IV AIRCRAFT.

18. OTHER LIMITATIONS ON CONSTRUCTION

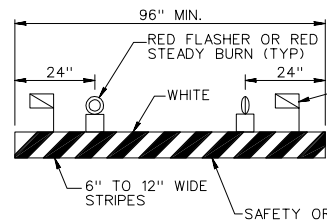
1. IF, DURING CONSTRUCTION, AN EMERGENCY IS DECLARED BY THE AIRPORT, THE CONTRACTOR SHALL IMMEDIATELY CLEAR THE PAVEMENT OF ALL VEHICLES, PERSONNEL AND EQUIPMENT.
2. BROKEN CONCRETE, BROKEN ASPHALT, AND OTHER MISCELLANEOUS DEBRIS SHALL BE DISPOSED OF OFF AIRPORT PROPERTY, UNLESS OTHERWISE SPECIFIED.



CONSTRUCTION EQUIPMENT AND TRUCK SIGNAL FLAG
NOT TO SCALE



PLAN
MULTI-BARRIER AR10x96, RRM AIRPORT BARRIER 4202-25, WATERCADE WC01-10, NEUBERT AERO CORP. NAC-PC9642, OR APPROVED EQUAL (SEE NOTE 6)



20" X 20" NYLON FLAG WITH 12 GA. DIAGONAL WIRE STIFFENER. TWO FLAGS TOTAL (ONE ORANGE FLAG AND ONE WHITE FLAG). FLAGS SHALL BE REMOVABLE.

BARRICADE NOTES:

1. FLASHER OR STEADY BURN LIGHTS SHALL BE BATTERY OR SOLAR POWER OPERATED. LENS SHALL BE RED AND BE ABLE TO ROTATE 90°.
2. FACING OF BARRICADE SHALL BE COVERED WITH REFLECTIVE TAPE OR PAINT.
3. BARRICADES TO BE PLACED WITH A MAXIMUM OF 20' SPACING CENTER TO CENTER ALONG OPERATIONAL PAVEMENT ADJACENT TO CONSTRUCTION AS DIRECTED BY THE RESIDENT ENGINEER. ALTERNATE FLASHER OR STEADY BURN LENSES SO THAT EVERY OTHER LENS IS ROTATED 90°.
4. FLASHER OR STEADY BURN LIGHTS SHALL BE SECURED TO THE BARRICADES, AS APPROVED BY THE RESIDENT ENGINEER.
5. BARRICADES SHALL BE OF LOW MASS, EASILY COLLAPSIBLE UPON CONTACT WITH AN AIRCRAFT OR ANY OF ITS COMPONENTS, AND WEIGHTED TO AVOID BEING BLOWN OVER.
6. BARRICADES SHALL BE OF A COMMERCIAL DESIGN.
7. THE AIRPORT WILL SUPPLY UP TO FIFTY (50) LOW PROFILE BARRICADES.
8. THE CONTRACTOR SHALL BE RESPONSIBLE FOR SUPPLYING, REPLACING, AND DISPOSING OF BATTERIES. OLD BATTERIES SHALL BE DISPOSED OFF AIRPORT PROPERTY.

LOW PROFILE LIGHTED BARRICADE
NOT TO SCALE

REVISIONS		
NUMBER	BY	DATE



THIS BAR IS EQUAL TO 2' AT FULL SCALE (34X22).
PLOT 1

**MIDAMERICA ST. LOUIS AIRPORT
ST. CLAIR COUNTY, ILLINOIS**

AIRFIELD LIGHTING IMPROVEMENTS

ONE MEMORIAL DRIVE, SUITE 500
ST. LOUIS, MO 63102
(314) 436-5500

GMT
CRAWFORD, MURPHY & TILLY, INC.
CONSULTING ENGINEERS

© Copyright GMT, Inc.
PROFESSIONAL ENGINEERING - 184-00613

**IL PROJECT, BLV-4405
AIP PROJECT, 3-17-SBGP-XX**

FILE: 04_CSPP.dwg
DESIGN BY: ASF
DRAWN BY: ASF
CHECKED BY: MJD/CET
APPROVED BY: BWG
DATE: JUNE 27, 2014
JOB No: 13098-02