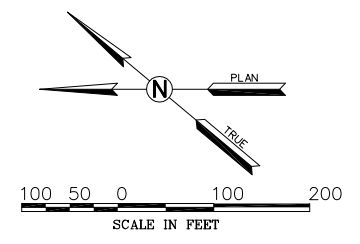


LEGEND

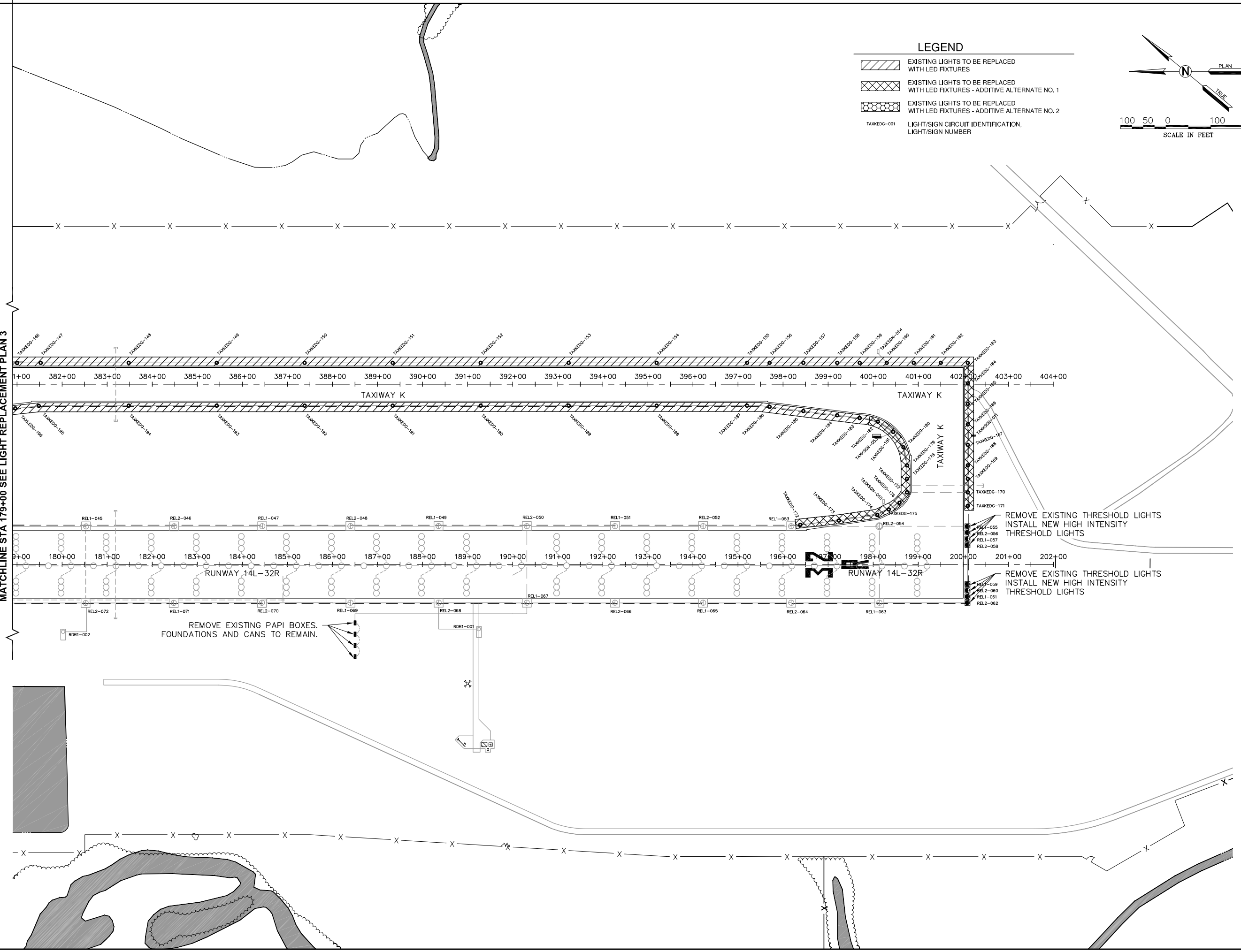
-  EXISTING LIGHTS TO BE REPLACED WITH LED FIXTURES
-  EXISTING LIGHTS TO BE REPLACED WITH LED FIXTURES - ADDITIVE ALTERNATE NO. 1
-  EXISTING LIGHTS TO BE REPLACED WITH LED FIXTURES - ADDITIVE ALTERNATE NO. 2
-  LIGHT/SIGN CIRCUIT IDENTIFICATION, LIGHT/SIGN NUMBER



REVISIONS		
NUMBER	BY	DATE

0 1 2
THIS BAR IS EQUAL TO 2'
AT FULL SCALE (34X22).
PLOT 1

MATCHLINE STA 179+00 SEE LIGHT REPLACEMENT PLAN 3



REMOVE EXISTING PAPI BOXES.
FOUNDATIONS AND CANS TO REMAIN.

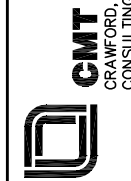
REMOVE EXISTING THRESHOLD LIGHTS
INSTALL NEW HIGH INTENSITY
THRESHOLD LIGHTS

REMOVE EXISTING THRESHOLD LIGHTS
INSTALL NEW HIGH INTENSITY
THRESHOLD LIGHTS

**MIDAMERICA ST. LOUIS AIRPORT
ST. CLAIR COUNTY, ILLINOIS**

AIRFIELD LIGHTING IMPROVEMENTS

ONE MEMORIAL DRIVE, SUITE 500
ST. LOUIS, MO 63102
(314) 436-5500



GMT
CRAWFORD, MURPHY & TILLY, INC.
CONSULTING ENGINEERS

© Copyright GMT, Inc.
PROFESSIONAL ENGINEERING - 184-00613

**IL PROJECT, BLV-4405
AIP PROJECT, 3-17-SBGP-XX**

FILE: 13-16_LIGHT_REPLACEMENT.dwg

DESIGN BY: ASF

DRAWN BY: ASF

CHECKED BY: MJD/CET

APPROVED BY: BWG

DATE: JUNE 27, 2014

JOB No: 13098-02

**LIGHT
REPLACEMENT
PLAN 4**