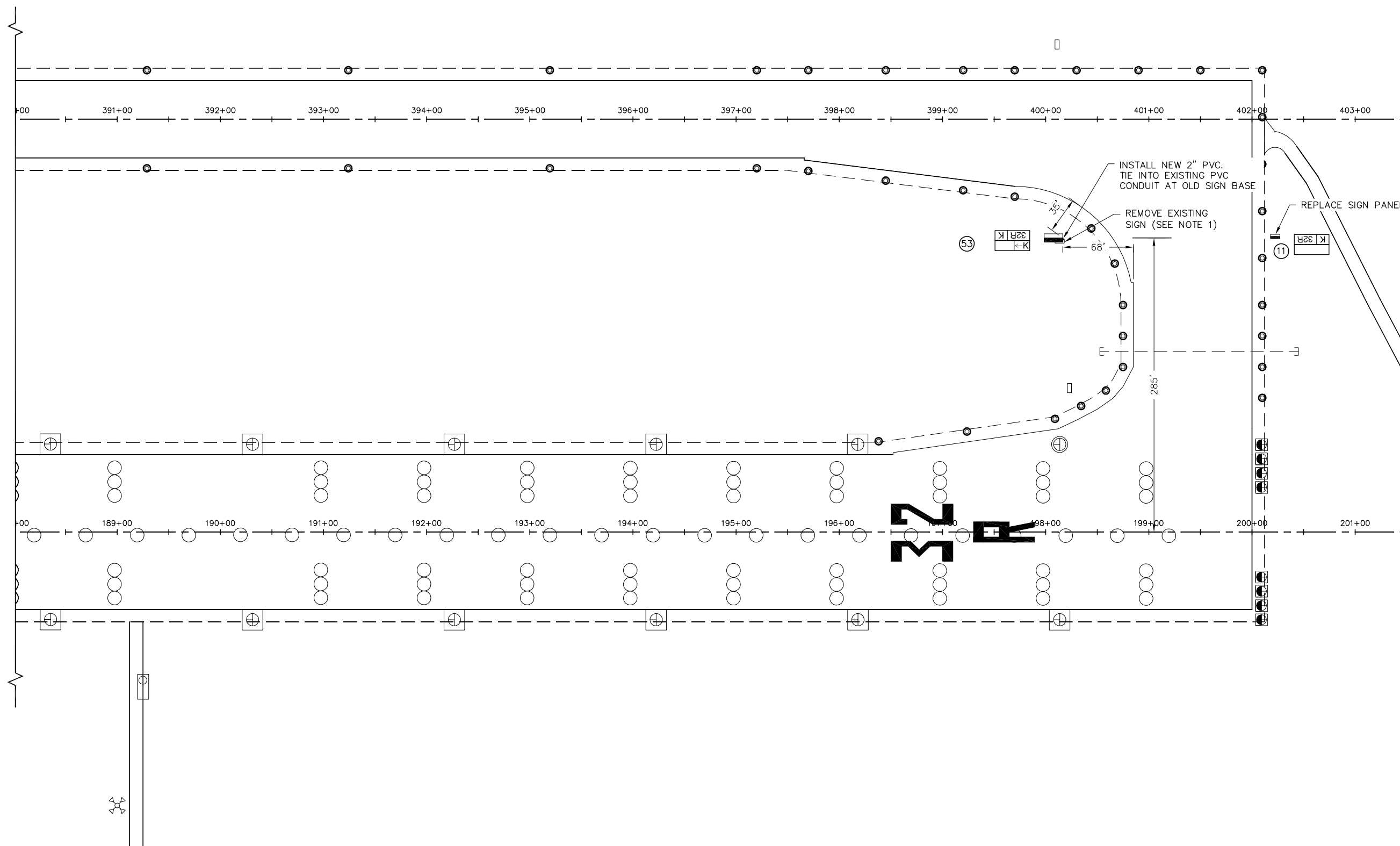
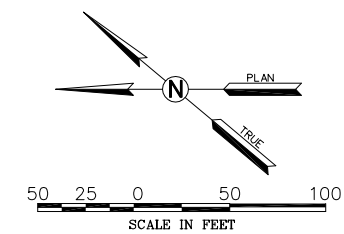


LEGEND

-  PROPOSED SIGN
-  EXISTING SIGN
-  EXISTING SIGN TO RECEIVE NEW PANEL
-  AIRFIELD SIGN DESIGNATION

- NOTES:
- REMOVAL OF EXISTING SIGN BASE, BACKFILLING, AND SEEDING/MULCHING SHALL ALL BE CONSIDERED INCIDENTAL TO SIGN REMOVAL.
 - DIMENSIONS FROM TAXIWAY PAVEMENT EDGE INDICATE DISTANCE TO NEAREST EDGE OF SIGN, DIMENSIONS FROM RUNWAY CENTERLINE INDICATE DISTANCE TO CENTER OF SIGN.



REVISIONS		
NUMBER	BY	DATE

0 1 2
THIS BAR IS EQUAL TO 2"
AT FULL SCALE (34X22).
PLOT 1

**MIDAMERICA ST. LOUIS AIRPORT
ST. CLAIR COUNTY, ILLINOIS**

AIRFIELD LIGHTING IMPROVEMENTS

ONE MEMORIAL DRIVE, SUITE 500
ST. LOUIS, MO 63102
(314) 436-5500

CMT
CRAWFORD, MURPHY & TILLY, INC.
CONSULTING ENGINEERS

© Copyright CMT, Inc.
PROFESSIONAL ENGINEERING - 184-00613

**IL PROJECT, BLV-4405
AIP PROJECT, 3-17-SBGP-XX**

FILE: 17-19_SIGNAGE.dwg
DESIGN BY: ASF
DRAWN BY: ASF
CHECKED BY: MJD/CET
APPROVED BY: BWG
DATE: JUNE 27, 2014
JOB No: 13098-02