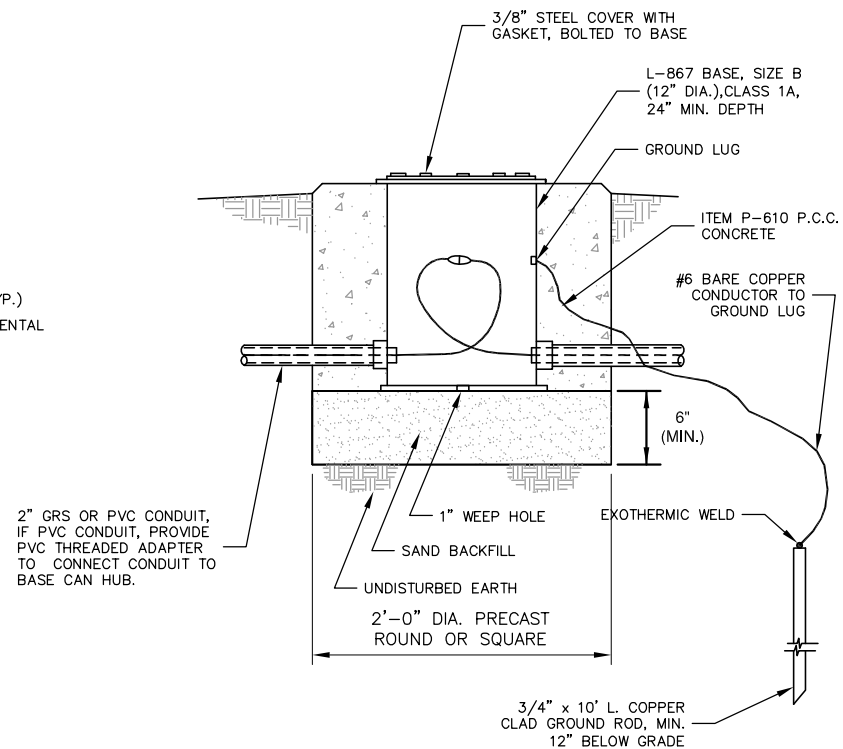


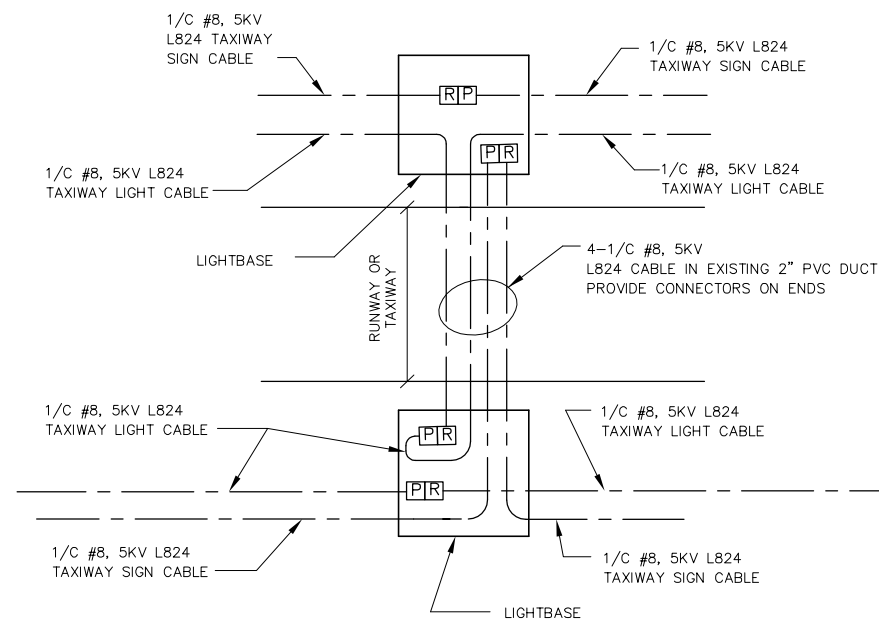
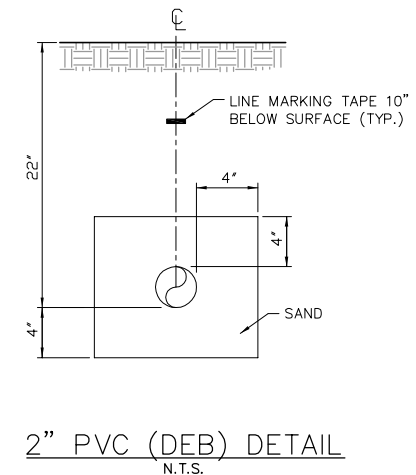
**NOTES**

1. LIGHT FIXTURES SHALL BE L-861(L) OR L-862E AS INDICATED ON THE PLANS AND SPECIFICATIONS. TAXIWAY EDGE LIGHTS TO BE LED. RUNWAY THRESHOLD LIGHTS TO BE HIGH INTENSITY QUARTZ, LAMPS 100 W, AS REQUIRED BY LIGHT FIXTURE MANUFACTURER TO MEET MINIMUM DISTRIBUTION AND OUTPUT REQUIREMENTS OF AC 150/5345-46(LATEST EDITION).
2. L-830 ISOLATION TRANSFORMERS FOR THRESHOLD LIGHTS SHALL BE L-830/831-4, 100 WATT. LED EDGE LIGHTS SHALL BE L-830-16, 10/15 WATT OR L-830-17, 20/25 WATT, AS RECOMMENDED BY LIGHT FIXTURE MANUFACTURER.
3. THE TOLERANCE FOR THE HEIGHT OF RUNWAY/TAXIWAY EDGE LIGHTS MUST BE ± 1 INCH. THE TOLERANCE FOR THE LATERAL SPACING (LIGHT LANE TO RUNWAY/TAXIWAY CENTERLINE) OF RUNWAY/TAXIWAY EDGE LIGHTS MUST BE ± 1 INCH.
4. DIRECTION OF PRIMARY CABLES MUST BE IDENTIFIED BY COLOR CODING AS FOLLOWS: WHEN FACING LIGHT WITH BACK FACING PAVEMENT, CABLE TO THE LEFT IS CODED RED AND CABLE TO THE RIGHT IS CODED BLUE.
5. APPLY A CORROSION INHIBITING, ANTI-SEIZE COMPOUND TO ALL SCREWS, NUTS AND FRANGIBLE COUPLING THREADS. IF COATED BOLTS ARE USED PER ENGINEERING BRIEF #83, DO NOT APPLY ANTI-SEIZE COMPOUND.
6. ELECTRICAL INSULATING GREASE MUST BE APPLIED WITHIN THE L-830 ISOLATION TRANSFORMER SECONDARY TWO CONDUCTOR CONNECTORS TO PREVENT WATER ENTRANCE. THE CONNECTORS MUST NOT BE TAPED.
7. THE LIGHT FIXTURE SHALL BE BONDED TO THE LIGHT BASE INTERNAL GROUND LUG VIA A #6 AWG STRANDED COPPER WIRE RATED FOR 600 VOLTS WITH GREEN XHHW INSULATION. THE GROUND WIRE LENGTH SHALL BE SUFFICIENT TO ALLOW THE REMOVAL OF THE LIGHT FIXTURE FROM THE LIGHT BASE FOR ROUTINE MAINTENANCE. SEE THE LIGHT FIXTURE MANUFACTURER'S INSTRUCTIONS FOR PROPER METHODS OF ATTACHING THIS BONDING WIRE. AS AN ALTERNATE, THE CONTRACTOR MAY ATTACH THE INSULATED BONDING WIRE DIRECTLY TO THE GROUND ROD VIA EXOTHERMIC WELD.
8. INSTALLATION OF GROUND ROD SHALL BE INCIDENTAL TO INSTALLATION OF THE LIGHT FIXTURE.
9. EXISTING LIGHT FIXTURES ARE 14" HIGH.

**BASE MOUNTED EDGE LIGHT**  
N.T.S.



**SPLICE CAN DETAIL**  
N.T.S.



NOTE: THIS CONFIGURATION TYPICAL  
FOR ALL TEST LOOPS.

- [P] L823 PLUG CONNECTOR
- [R] L823 RECPT. CONNECTOR

**TEST LOOP DETAIL**  
N.T.S.

**REVISIONS**

NUMBER	BY	DATE

0 1 2  
THIS BAR IS EQUAL TO 2"  
AT FULL SCALE (34X22).  
PLOT 1

**MIDAMERICA ST. LOUIS AIRPORT  
ST. CLAIR COUNTY, ILLINOIS**

**AIRFIELD LIGHTING IMPROVEMENTS**

ONE MEMORIAL DRIVE, SUITE 500  
ST. LOUIS, MO 63102  
(314) 436-5500

**CMT**  
CRAWFORD, MURPHY & TILLY, INC.  
CONSULTING ENGINEERS  
© Copyright CMT, Inc.  
PROFESSIONAL ENGINEERING - 184-00613

**IL PROJECT, BLV-4405  
AIP PROJECT, 3-17-SBGP-XX**

FILE: 33-36\_ELECTRICAL\_DETAILS.dwg

DESIGN BY: ASF

DRAWN BY: ASF

CHECKED BY: MJD/CET

APPROVED BY: BWG

DATE: JUNE 27, 2014

JOB No: 13098-02

**ELECTRICAL  
DETAILS 1**