

SEQUENCE OF CONSTRUCTION NOTES

THE GENERAL PROGRESSION OF THE WORK SHALL BE AS FOLLOWS:

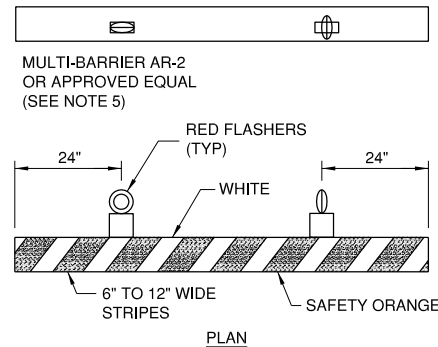
- SUBMIT EQUIPMENT AND BUILDING SHOP, PLAN AND WORKING DRAWINGS FOR REVIEW. INCLUDE WITH THE SUBMITTALS ALL BUY AMERICAN CERTIFICATIONS FOR ALL MATERIALS.
- SUBMIT NOTICE OF OBSTRUCTION EVALUATION- AIRPORT AIRSPACE ANALYSIS (OE/AAA) INFORMATION FOR ANTICIPATED EQUIPMENT HEIGHTS IF IN EXCESS OF 25'. NOTE THAT THIS PROCESS MAY REQUIRE UP TO 90 DAYS FOR FAA APPROVAL. EQUIPMENT ABOVE 25' HEIGHT SHALL NOT BE UTILIZED UNTIL FAA APPROVAL HAS BEEN PROVIDED.
- SUBMIT PROJECT SCHEDULE SHOWING RELATIONSHIP BETWEEN CONSTRUCTION DURATION FOR PAY ITEMS IN RELATION TO THE PHASES OF WORK WHERE THEY ARE BEING PERFORMED. CLEARLY IDENTIFY DATES OF RUNWAY CLOSURES AND WHAT PHASES WILL BE WORKED IN DURING THAT CLOSURE.
- SUBMIT PRELIMINARY MATERIALS CERTIFICATIONS INCLUDING BUY AMERICAN CERTIFICATIONS AND WAIVER REQUEST FOR MATERIALS THAT DO NOT MEET THE CONTRACT REQUIREMENTS.
- INITIATE CONSTRUCTION OF TAXIWAY REALIGNMENT AND WIDENING. INSTALL BARRICADES AS OUTLINED ON THE CONSTRUCTION ACTIVITY PLANS. FIELD VERIFY LOCATION OF EXISTING CIRCUITS, PERFORM TESTING ON EXISTING AIRFIELD CIRCUITS TO VERIFY CONDITION OF CIRCUIT CABLES. THE RESIDENT ENGINEER SHALL BE PRESENT AT THE TIME OF TESTING AND SHALL BE GIVEN A COPY OF THE TEST RESULTS.
- INITIATE CONSTRUCTION WITHIN THE VARIOUS PHASES OF THE PROJECT. TAXIWAY C REALIGNMENT AND WIDENING PHASES SHALL BE CONSIDERED THE PRIMARY WORK AREAS. WORK IN THESE AREAS SHALL INCLUDE REMOVAL OF PAVEMENT/ELECTRICAL EQUIPMENT/DRAINAGE STRUCTURES, EARTH EMBANKMENT EXCAVATION, PAVEMENT CONSTRUCTION, DRAINAGE IMPROVEMENTS, ELECTRICAL IMPROVEMENTS, PAVEMENT MARKING AND TURFING.
- UPON COMPLETION OF ALL PHASES, THE CONTRACTOR SHALL REQUEST A FINAL INSPECTION OF THE PROJECT.

RUNWAY SAFETY AREAS

- WORK IN THE RUNWAY 14L/32R SAFETY AREA SHALL BE LIMITED TO THAT WORK NECESSARY TO CONSTRUCT THE CONNECTING TAXIWAY C PAVEMENTS AND CONSTRUCT DIRECTIONAL BORES UNDER RUNWAY 14L/32R FOR RGL CIRCUITS. NO PAVEMENT IMPROVEMENTS WILL BE MADE TO THE SURFACE OF RUNWAY 14L/32R.
- WORK IN THE RUNWAY 4/22 SAFETY AREA SHALL BE LIMITED TO THAT WORK NECESSARY TO CONSTRUCT THE PARALLEL TAXIWAY C PAVEMENTS AND CONSTRUCT DIRECTIONAL BORES UNDER RUNWAY 4/22 FOR TAXIWAY C HOME RUN CIRCUITS. PAVEMENT IMPROVEMENTS OF TAXIWAY C WILL BE AT THE INTERSECTION OF TAXIWAY C AND THE RUNWAY 4/22 PAVEMENT SURFACE.
- RUNWAY 4/22 AND RUNWAY 14L/32R SHALL NOT BE CLOSED AT THE SAME TIME.
- EQUIPMENT OR PERSONNEL SHALL REMAIN CLEAR OF THE RUNWAY PAVEMENTS AT ALL TIMES.
- NO EQUIPMENT, STOCKPILES OR EXCAVATIONS SHALL REMAIN INSIDE THE RUNWAY SAFETY AREAS AFTER WORKING HOURS.

APRON / TAXIWAY OBJECT FREE AREAS

- WORK IN THE TAXIWAY OBJECT FREE AREAS SHALL REQUIRE THAT TAXIWAY TO BE CLOSED. WORK WITHIN THE TAXIWAY OBJECT FREE AREAS BUT NOT ON THE HARD SURFACE OF THE TAXIWAY SHALL INCLUDE, TAXIWAY GUIDANCE SIGN INSTALLATION, TRENCHING CABLE, RUNWAY GUARD LIGHT INSTALLATION AND DIRECTIONAL BORES. WORK WITHIN THE TAXIWAY OBJECT FREE AREAS ON THE HARD SURFACE WILL INCLUDE PAVEMENT MARKING AND PAVEMENT MARKING REMOVAL.
- NO EQUIPMENT, OPEN TRENCHES OR EXCAVATIONS SHALL REMAIN INSIDE THE TAXIWAY OBJECT FREE AREAS AFTER WORKING HOURS.
- THE TAXIWAYS OR EDGES OF APRONS SHALL BE CLOSED WITH BARRICADES AT 15' MAXIMUM SPACING PRIOR TO WORKING IN THE CRITICAL WORK AREAS.

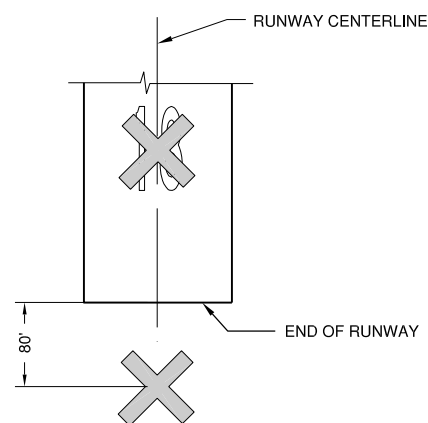


BARRICADE NOTES:

- FLASHERS SHALL BE BATTERY OPERATED. LENS SHALL BE RED AND BE ABLE TO ROTATE 90°.
- FACING OF BARRICADE SHALL BE COVERED WITH REFLECTIVE TAPE OR PAINT.
- BARRICADES TO BE PLACED WITH A MAXIMUM OF 15' SPACING BETWEEN ENDS OF BARRICADES ALONG OPERATIONAL PAVEMENT ADJACENT TO CONSTRUCTION OR AS DIRECTED BY THE RESIDENT ENGINEER. ALTERNATE FLASHER LENSES SO THAT EVERY OTHER LENS IS ROTATED 90°.
- FLASHERS SHALL BE SECURED TO THE BARRICADES, AS APPROVED BY THE RESIDENT ENGINEER.
- BARRICADES SHALL BE OF LOW MASS, EASILY COLLAPSIBLE UPON CONTACT WITH AN AIRCRAFT OR ANY OF IT COMPONENTS, AND WEIGHTED OR STURDILY ATTACHED TO THE SURFACE. IF AFFIXED TO THE SURFACE, THE BARRICADE MUST BE FRANGIBLE AT GRADE LEVEL OR LOW AS POSSIBLE, BUT NOT TO EXCEED 3 INCHES ABOVE THE GROUND.

LOW PROFILE LIGHTED BARRICADE

N.T.S.

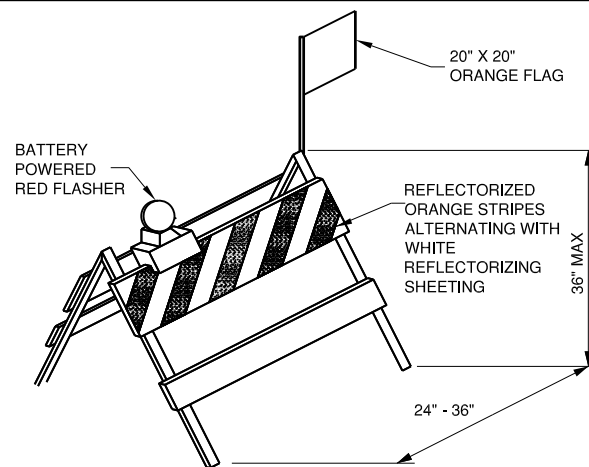


CLOSED RUNWAY MARKER DETAIL

N.T.S.

NOTES

- MARKERS SHALL BE SOLID YELLOW.
- MARKERS SHALL BE SELF CONTAINED MOBILE MARKERS PROVIDED BY THE CONTRACTOR THROUGH THE CONTRACT.
- CONTRACTOR SHALL MAINTAIN MARKERS.
- COST OF INSTALLING, MAINTAINING, RELOCATING AND REMOVING MARKERS SHALL BE INCIDENTAL TO THE CONTRACT.
- MARKERS SHALL BE PLACED OVER EXISTING RUNWAY NUMERALS.



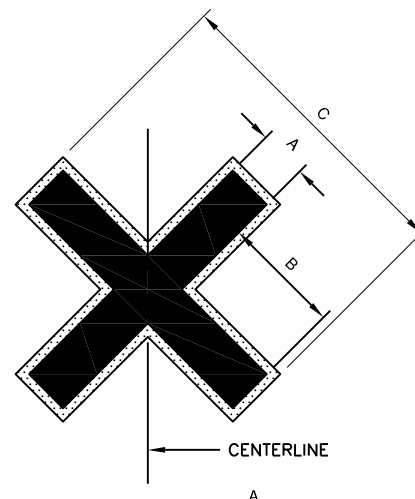
NOTE:

BARRICADES SHALL BE PLACED AS SHOWN ON THE CONSTRUCTION ACTIVITY PLANS 15' ON CENTER AT DESIGNATED LOCATIONS. BARRICADE SHALL BE WEIGHTED WITH A MINIMUM OF 6 SAND BAGS TO PREVENT THEM FROM BEING BLOWN OVER.

IDOT TYPE 1 BARRICADE DETAIL

NOTE:

WHERE NOT SPECIFIED, THE CONTRACTOR SHALL HAVE THE OPTION AS TO WHICH TYPE OF BARRICADE IS USED.



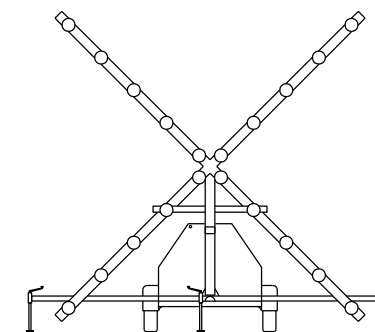
CLOSED RUNWAY/ TAXIWAY MARKER DETAIL

N.T.S.

SYMBOL TYPE	DIMENSION	A	B	C
CLOSED RUNWAY		10'-0"	25'-0"	60'-0"
CLOSED TAXIWAY		5'-0"	12'-6"	30'-0"

NOTES

- CLOSURE MARKERS SHALL BE SOLID YELLOW.
- MARKERS SHALL BE PLACED ON TAXIWAYS AT THE RUNWAY INTERSECTIONS INSIDE THE RUNWAY SAFETY AREA.
- MARKERS SHALL BE PAINTED ON THE TAXIWAY USING TEMPORARY PAINT OR CONSTRUCTED OF FABRIC, COLORED PLASTIC, PAINTED SHEETS OF PLYWOOD OR SIMILAR MATERIALS.
- NON PAINTED MARKERS SHALL BE SECURED TO PREVENT MOVEMENT BY PROP WASH, JET BLAST OR OTHER WIND CURRENTS. METHODS OF SECURING THE MARKERS SHALL NOT PROTRUDE MORE THAN 3" ABOVE THE PAVEMENT STRUCTURE

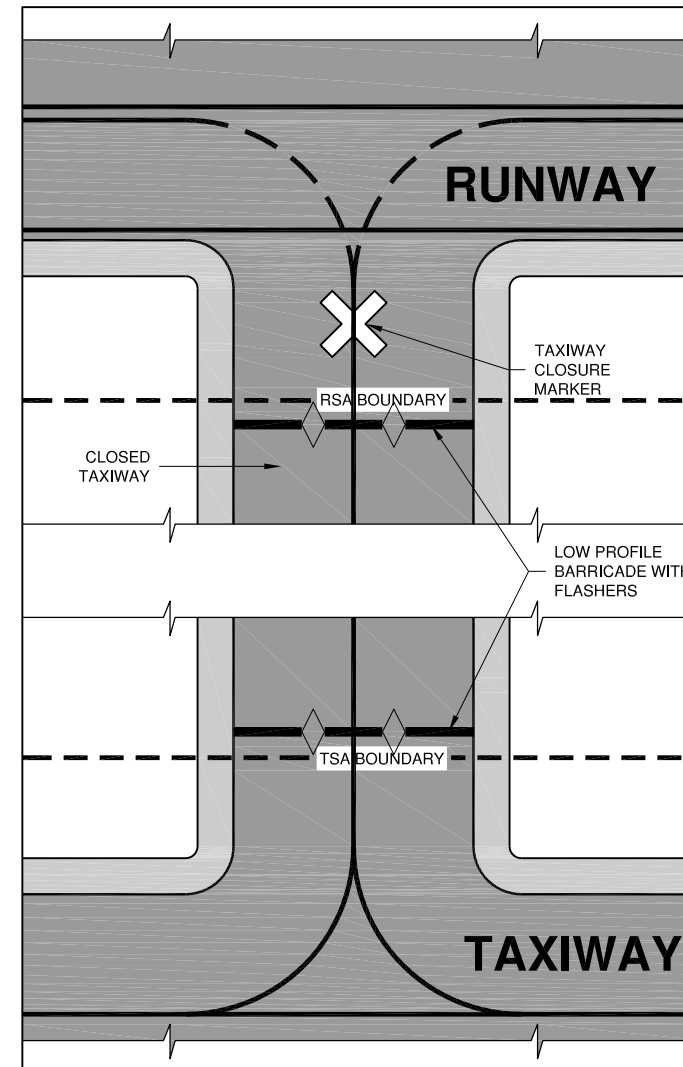


LIGHTED RUNWAY CLOSURE MARKER

N.T.S.

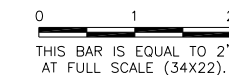
NOTES

- TO BE PLACED ON PAVEMENT AT THE RUNWAY NUMERALS.
- PAIR OF LIGHTED 'X'S TO BE PROVIDED BY THE AIRPORT, THE CONTRACTOR SHALL BE RESPONSIBLE FOR MAINTENANCE (FUEL, OIL, LIGHT BULBS) WHEN USED DURING CONSTRUCTION CLOSURES.



UN053

REVISIONS		
NUMBER	BY	DATE



UNIVERSITY OF ILLINOIS
 WILLARD AIRPORT
 SAVOY, ILLINOIS

BASE BID - REALIGN AND WIDEN TAXIWAY C
 CONSTRUCTION ACTIVITY PLAN NOTES &
 DETAILS

© Copyright CMT, Inc.
CMT
 CRAWFORD, MURPHY & TILLY, INC.
 CONSULTING ENGINEERS
 License No. 184-000613

DESIGN BY:	CBG
DRAWN BY:	CMT
CHECKED BY:	CET
APPROVED BY:	CET
DATE:	JUNE 27, 2014
JOB No:	13059-02-00
IL PROJ. NO. CMI-4347 AIP PROJ. NO. 3-17-0016-XX	
SHEET	05 OF 83 SHEETS