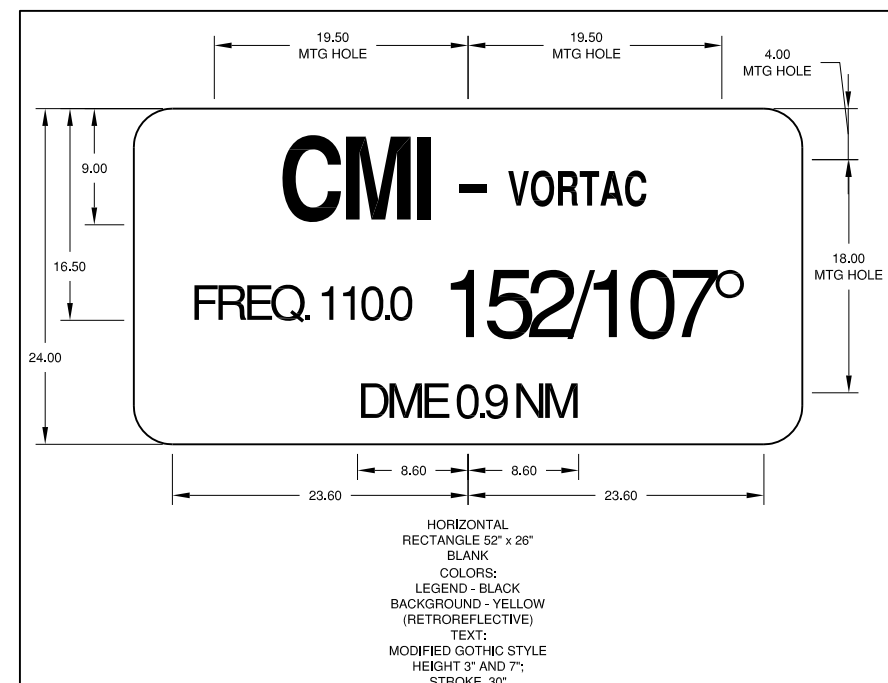
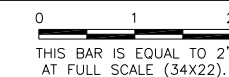


**UN053**

REVISIONS		
NUMBER	BY	DATE

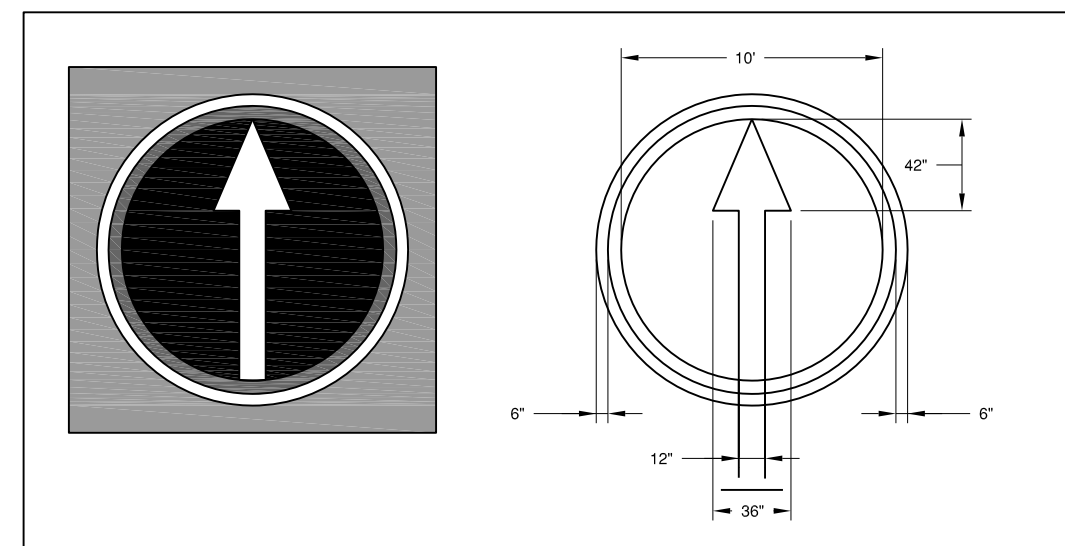
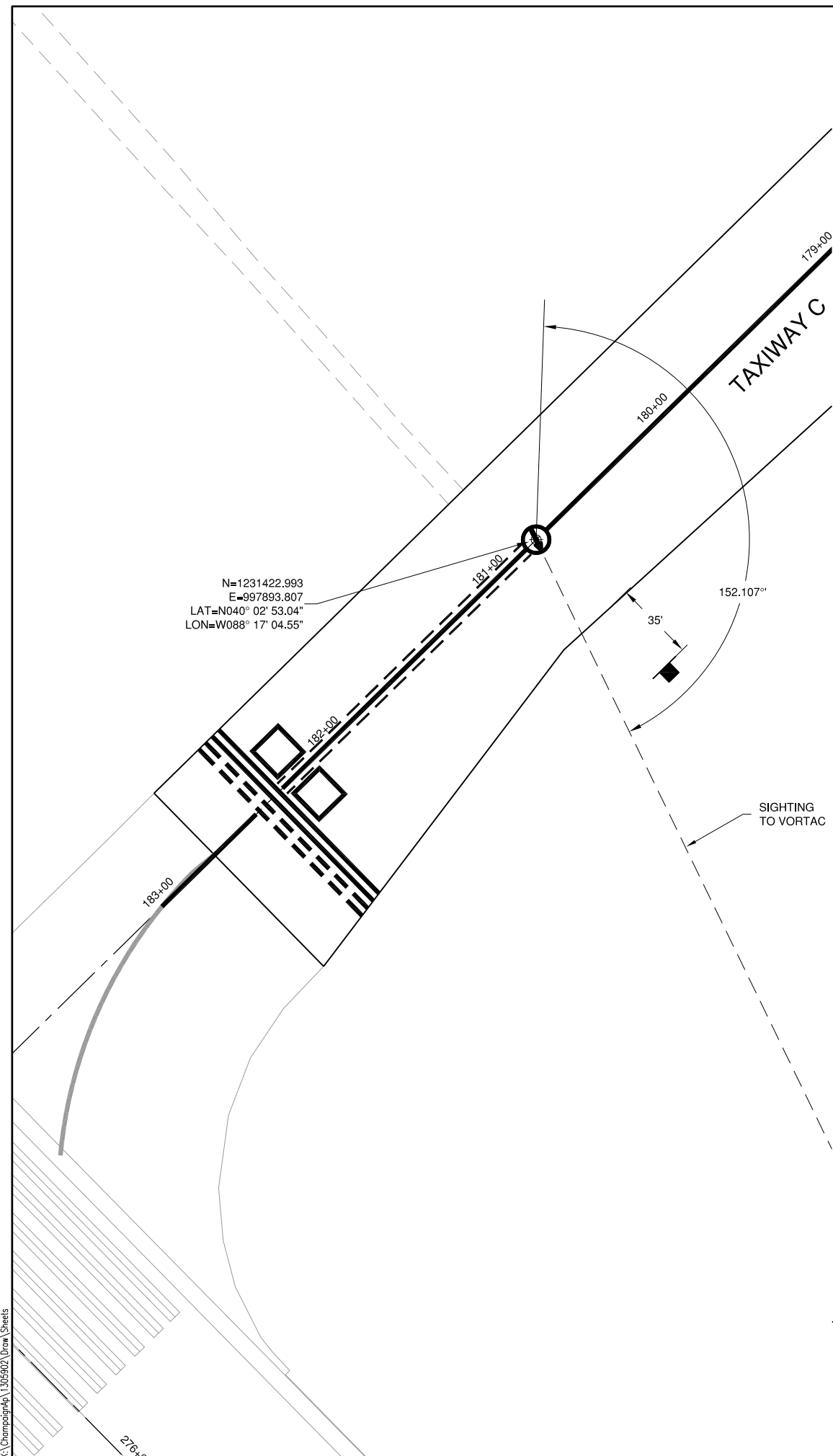


**VOR RECEIVER CHECK POINT SIGN**

N.T.S.

**NOTES:**

- SIGN LEGEND WILL DEPEND ON THE EXACT LOCATION OF CHECKPOINT MARKING.
- CONTRACTOR SHALL VERIFY MARKING LAYOUT LOCATION AND SIGN LEGEND PRIOR TO CONSTRUCTING SIGN.

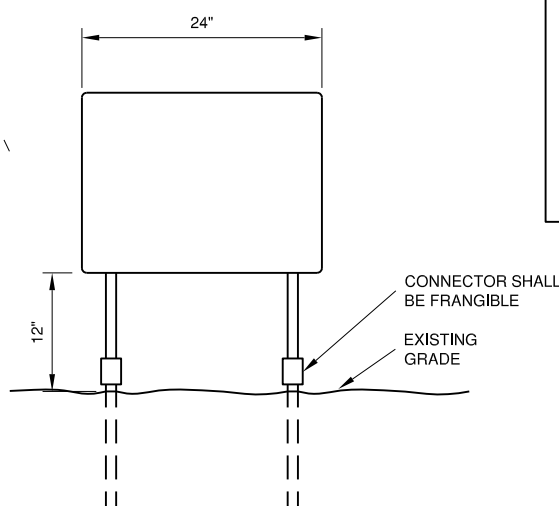


**VOR RECEIVER CHECK POINT MARKER**

N.T.S.

**NOTES:**

- ARROW IS TO BE ALIGNED TOWARD THE VORTAC.
- CIRCLE MAY BE BORDERED ON INSIDE AND OUTSIDE WITH A 6 INCHES BLACK BAND IF NECESSARY FOR CONTRAST.
- REFER TO AC150/5340-18.



**INFORMATION SIGN LEGEND**

N.T.S.

UNIVERSITY OF ILLINOIS  
 WILLARD AIRPORT  
 SAVOY, ILLINOIS

BASE BID - REALIGN AND WIDEN TAXIWAY C  
 VORTAC CHECKPOINT DETAILS

© Copyright CMT, Inc.  
**CMT**  
 CRAWFORD, MURPHY & TILLY, INC.  
 CONSULTING ENGINEERS  
 License No. 184-000613

DESIGN BY:	CBG
DRAWN BY:	ADD
CHECKED BY:	CET
APPROVED BY:	CET
DATE:	JUNE 27, 2014
JOB No:	13059-02-00
IL PROJ. NO.	CMI-4347
AIP PROJ. NO.	3-17-0016-XX
SHEET	63 OF 83 SHEETS