

08-01-2025 LETTING ITEM 004

FOR INDEX OF SHEETS AND LIST OF
STATE STANDARDS, SEE SHEET NO. 2

WESTERN FRONTAGE ROAD

DESIGN DESIGNATION = LOCAL ROAD OR STEET
DESIGN SPEED = 30 MPH
POSTED SPEED = 30 MPH
DESIGN YEAR = 2050

APPLIES TO SHEETS 1 - 21



REGISTERED P.E., STATE OF ILLINOIS, EXPIRES 11 / 30 / 2025



FULL SIZE PLANS HAVE BEEN PREPARED USING STANDARD
ENGINEERING SCALES. REDUCED SIZED PLANS WILL NOT
CONFORM TO STANDARD SCALES. IN MAKING MEASUREMENTS
ON REDUCED PLANS, THE ABOVE SCALES MAY BE USED.

J.U.L.I.E.
JOINT UTILITY LOCATION INFORMATION FOR EXCAVATION
1-800-892-0123
OR 811

STATE OF ILLINOIS

DEPARTMENT OF TRANSPORTATION

PLANS FOR PROPOSED FEDERAL AID HIGHWAY

TR 3367

KINGERY HIGHWAY ACCESSIBLE FRONTAGE ROADS

PAVEMENT OVERLAY

OAKLEAF DR TO IL ROUTE 83

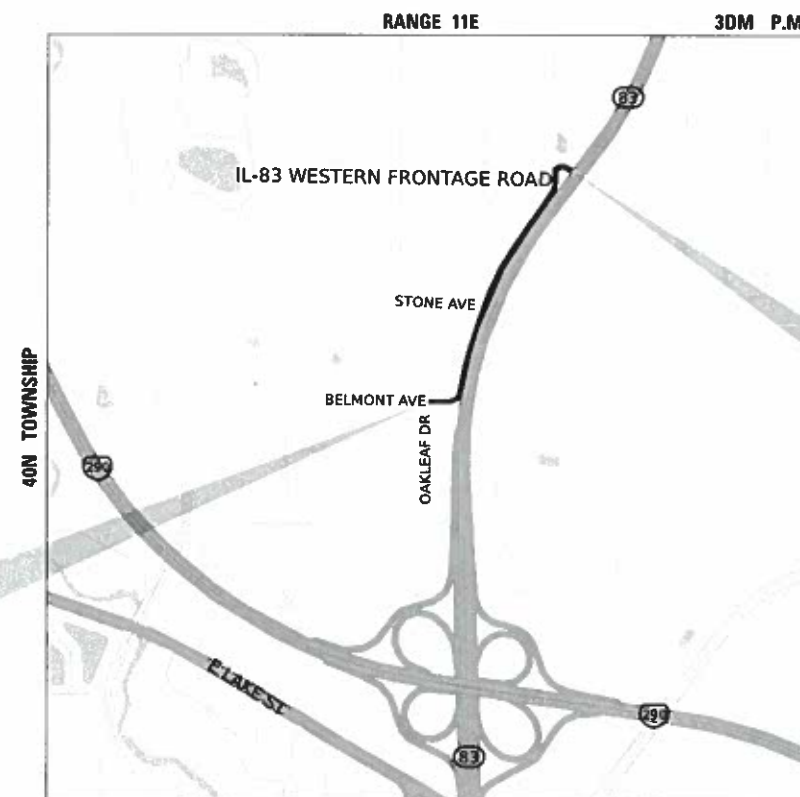
SECTION NO.: 24-01121-00-PV

PROJECT NO.: MCMQ(032)

ADDISON TOWNSHIP

DUPAGE COUNTY

C-91-058-25



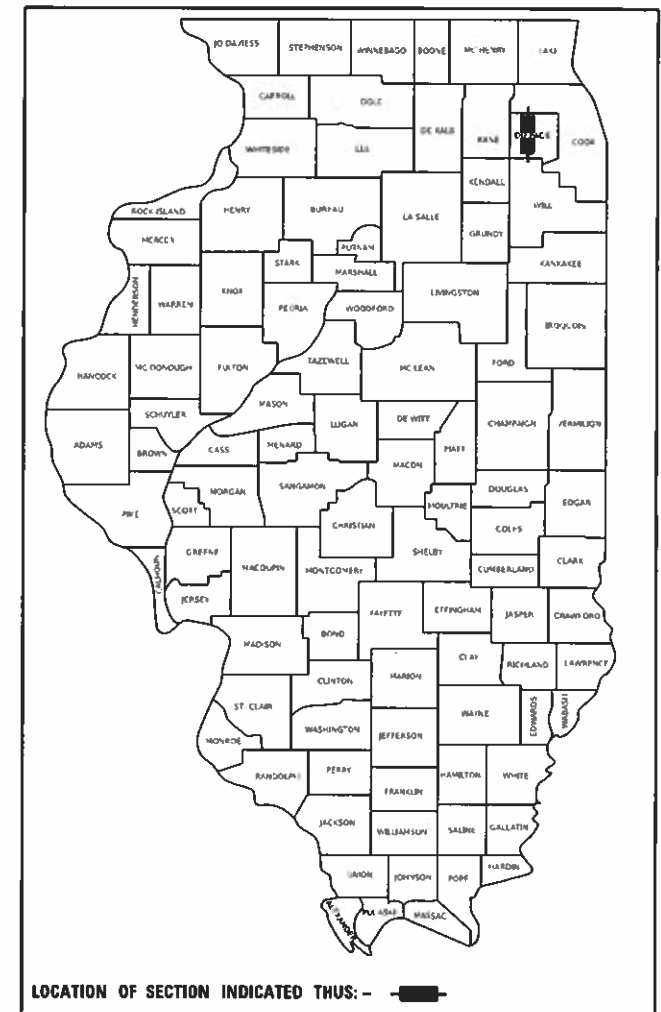
PROJECT BEGINS
10+72.00

PROJECT ENDS
STA. 38+65.49

ADDISON TOWNSHIP

GROSS LENGTH OF IMPROVEMENTS = 2,793.49 FT. = 0.529 MILE

T.R.	SECTION	COUNTY	TOTAL SHEETS	SHEET NO.
3367	24-01121-00-PV	DUPAGE	21	1
CONTRACT NO. 61L45				
FED. ROAD DIST. NO. 1 ILLINOIS FED. AID PROJECT				



STATE OF ILLINOIS DEPARTMENT OF TRANSPORTATION	
Approved	April 17, 2025 <i>Don Holod</i> Don Holod Addison Township Highway Commissioner
Passed	May 27, 2025 <i>Chris Hilde</i> Chris Hilde District One Engineer of Local Roads and Streets
Releasing for Bid Based on Limited Review	May 27, 2025 <i>Chris Hilde</i> Chris Hilde Regional Engineer
PRINTED BY THE AUTHORITY OF THE STATE OF ILLINOIS	

PLANS PREPARED BY:

Bravo Company
ENGINEERING

550 Warrenville Road, Suite 220
Lisle, IL 60532
Main: 630-702-9855
www.BravoCoEng.com

CONTRACT NO. 61L45

FEDERAL AID PROGRAM ENGINEER: CARMEN E. RAMOS, P.E. SCHAUMBURG, IL

INDEX OF SHEETS

- 1 COVER SHEET
- 2 INDEX OF SHEETS, GENERAL NOTES AND LIST OF STANDARDS
- 3 - 5 SUMMARY OF QUANTITIES
- 6 ALIGNMENT, TIES AND BENCHMARKS
- 7 - 8 TYPICAL SECTIONS
- 9 -14 REMOVAL AND ROADWAY PLAN
- 15 EROSION CONTROL, LANDSCAPING AND PAVEMENT MARKINGS PLAN
- 16-21 IDOT DISTRICT ONE STANDARD DETAILS

IDOT HIGHWAY STANDARDS

- 000001-08 STANDARD SYMBOLS, ABBREVIATIONS, AND PATTERNS
- 280001-07 TEMPORARY EROSION CONTROL SYSTEMS
- 442201-03 CLASS C AND D PATCHES
- 604001-05 FRAME AND LIDS TYPE 1
- 701006-05 OFF-RD OPERATIONS, 2L, 2W, 15' (5.4 M) TO 24" (600 MM) FROM PAVEMENT EDGE
- 701301-04 LANE CLOSURE, 2L, 2W, SHORT TIME OPERATIONS
- 701311-03 LANE CLOSURE, 2L, 2W, MOVING OPERATIONS - DAY ONLY
- 701501-06 URBAN LANE CLOSURE, 2L, 2W, UNDIVIDED
- 701901-10 TRAFFIC CONTROL DEVICES
- 720001-01 SIGN PANEL MOUNTING DETAILS
- 720006-04 SIGN PANEL ERECTION DETAILS
- 728001-01 TELESOPING STEEL SIGN SUPPORT
- 731001-01 BASE FOR TELESOPING STEEL SIGN SUPPORT
- 780001-05 TYPICAL PAVEMENT MARKINGS

IDOT DISTRICT ONE STANDARDS

- BD-08 DETAILS FOR FRAMES AND LIDS ADJUSTMENT WITH MILLING
- BD-32 BUTT JOINT AND HMA TAPER DETAILS
- BD-33 HMA TAPER AT EDGE OF P.C.C. PAVEMENT
- TC-10 TRAFFIC CONTROL AND PROTECTION FOR SIDE ROADS, INTERSECTIONS, AND DRIVEWAYS
- TC-11 TYPICAL APPLICATIONS RAISED REFLECTIVE PAVEMENT MARKERS (SNOW-PLOW RESISTANT)
- TC-13 DISTRICT ONE TYPICAL PAVEMENT MARKINGS

GENERAL

- 1. ALL REFERENCES TO STANDARD SPECIFICATIONS IN THESE GENERAL NOTES SHALL BE INTERPRETED TO MEAN THE "STANDARD SPECIFICATIONS FOR ROAD AND BRIDGE CONSTRUCTION" ADOPTED BY THE ILLINOIS DEPARTMENT OF TRANSPORTATION, JANUARY I, 2022 AND THE "SUPPLEMENTAL SPECIFICATIONS AND RECURRING SPECIAL PROVISIONS", ADOPTED JANUARY I, 2025.
- 2. AII CONSTRUCTION SHALL BE IN ACCORDANCE WITH THE STANDARD SPECIFICATIONS; THE LATEST EDITION OF THE "MANUAL ON UNIFORM TRAFFIC CONTROL DEVICES FOR STREETS AND HIGHWAYS" (MUTCD); THE DETAILS IN THE PLANS AND THE SPECIAL PROVISIONS, AND IDOT STANDARD DRAWINGS AS LISTED IN THE CONTRACT DOCUMENTS.
- 3. A SAW CUT SHALL BE REQUIRED TO THE FULL DEPTH AT THE JOINT BETWEEN THE PAVEMENT, SIDEWALK, CURB AND GUTTER, MEDIAN, DRIVEWAY PAVEMENT, HOT-MIX ASPHALT SURFACES TO BE REMOVED AND THAT LEFT IN PLACE OR AS DIRECTED BY THE ENGINEER.
- 4. THE DEPARTMENT HAS NOT OBTAINED ANY PERMITS FOR OFF-SITE BORROW, WASTE, USE (BWU) AREAS. PRIOR TO WORKING IN BWU AREAS, IF THE CONTRACTOR CHOOSES TO USE ACTIVITIES REQUIRING PERMITS IT IS THE CONTRACTOR'S RESPONSIBILITY TO SECURE THE PROPER PERMITS. IN ADDITION TO THE BORROW REVIEW (BDE 2289) AND USE/WASTE REVIEW (BDE 2290) SUBMITTALS, THE CONTRACTOR SHALL SUBMIT AN EROSION AND SEDIMENT CONTROL (ESC) PLAN FOR EVERY BWU SITE TO THE DEPARTMENT FOR ACCEPTANCE. GUIDELINE FOR ACCEPTABLE BWU PRACTICES CAN BE FOUND IN SECTION II.G.1 AND 2 OF THE SWPPP.
- 5. THE CONTRACTOR SHALL BE REQUIRED TO PROVIDE ACCESS TO ABUTTING PROPERTY AT ALL TIMES DURING THE CONSTRUCTION PROJECT.
- 6. THE SUBGRADE STABILITY SHALL BE VERIFIED BY PROOF ROLLING WITH A FULLY LOADED TANDEM-AXLE TRUCK.
- 7. GEOTECHNICAL FABRIC FOR GROUND STABILIZATION AND/OR AGGREGATE SUBGRADE IMPROVEMENT (CU YD) HAVE BEEN PROVIDED FOR USE AT THE LOCATIONS INDICATED FOR SOILS THAT TEND TO BE UNSTABLE AND/OR UNSUITABLE. THE ACTUAL NEED FOR REMOVAL AND REPLACEMENT WITH ABOVE ITEM WILL BE DETERMINED IN THE FIELD AT THE TIME OF CONSTRUCTION BY THE GEOTECHNICAL ENGINEER. ALL POTENTIALLY UNSTABLE SOILS SHOULD BE TESTED WITH A STATIC OR DYNAMIC CONE PENETROMETER AND TREATED IN ACCORDANCE WITH ARTICLE 301.04 OF THE SSRBC AND IDOT SUBGRADE STABILITY MANUAL. IF UNSTABLE AND/OR UNSUITABLE SOILS ARE NOT ENCOUNTERED, THEN THE QUANTITY SHALL BE DEDUCTED AND NO ADDITIONAL COMPENSATION WILL BE DUE TO THE CONTRACTOR.
- 8. ANY AGGREGATE SUBGRADE IMPROVEMENT CONTAMINATED AND/OR DAMAGED BY THE CONTRACTOR'S VEHICLES AND/OR EQUIPMENTS IS TO BE REMOVED AND REPLACED AS DIRECTED BY THE ENGINEER AT CONTRACTOR EXPENSE.

STAKING

- 1. AII RADII FOR PROPOSED CURB AND GUTTER ARE TO THE EDGE OF PAVEMENT UNLESS OTHERWISE NOTED.
- 2. THE STATION/OFFSET/ELEVATION NOTED FOR ALL DRAINAGE STRUCTURES LOCATED IN THE CURB LINE REFER TO THE POSITION OF THE ADJACENT PROPOSED EDGE OF PAVEMENT. THE CONTRACTOR SHALL BE RESPONSIBLE FOR DETERMINING THE OFFSET NECESSARY FOR EACH STRUCTURE TO SET THE FRAME AND GRATE IN THE PROPER LOCATION. ALL OTHER STRUCTURES ARE DIMENSIONED TO THE CENTER OF STRUCTURE.
- 3. THE ELEVATIONS INDICATED ON THE PLANS ARE FINISHED GRADES OR PROPOSED PAVEMENT GRADES, UNLESS OTHERWISE NOTED.

UTILITIES

- 1. PRIOR TO THE START OF THE CONSTRUCTION OPERATIONS, THE CONTRACTOR SHALL COORDINATE CONSTRUCTION ACTIVITIES WITH UTILITY COMPANIES. THE LOCATION OF PUBLIC OR PRIVATE UTILITIES SHOWN ON THE PLANS ARE APPROXIMATE AND ACCURACY IS NOT GUARANTEED. THE CONTRACTOR WILL BE REQUIRED TO ASCERTAIN THE EXACT LOCATION OF SUCH UTILITIES AND EXERCISE CARE DURING CONSTRUCTION OPERATIONS SO AS NOT TO DAMAGE THEM IN ACCORDANCE WITH THE SPECIAL PROVISIONS AND ARTICLE 107.39 OF THE STANDARD SPECIFICATIONS. THE CONTRACTOR SHALL BE RESPONSIBLE FOR CONTACTING THE OWNERS OF AII EXISTING UTILITIES SO THAT THEIR FACILITIES MAY BE LOCATED AND ADJUSTED OR MOVED.
- 2. BEFORE STARTING ANY EXCAVATION, THE CONTRACTOR SHALL CALL "JULIE" AT I-800-892-0123 FOR FIELD LOCATIONS OF BURIED ELECTRIC, TELEPHONE, GAS, WATER, SEWER, AND CABLE TELEVISION FACILITIES. (48 HOURS NOTIFICATION IS REQUIRED.)
- 3. THE CONTRACTOR SHALL BE RESPONSIBLE FOR THE PROTECTION OF ALL ABOVE AND BELOW GROUND UTILITIES EVEN THOUGH THEY MAY NOT BE SHOWN ON THE PLANS. ANY UTILITY THAT IS DAMAGED DURING CONSTRUCTION SHALL BE REPAIRED OR REPLACED TO THE SATISFACTION OF THE ENGINEER. THIS WORK SHALL BE AT THE EXPENSE OF THE CONTRACTOR.
- 4. ANY EXISTING OR PROPOSED SEWER DAMAGED BY THE CONTRACTOR DURING CONSTRUCTION SHALL BE REPLACED BY THE CONTRACTOR TO THE SATISFACTION OF THE ENGINEER. NO ADDITIONAL COMPENSATION SHALL BE PAID FOR THIS WORK.

SIGNING, STRIPING, AND LANDSCAPING

- 1. SIGNS WHICH ARE SO DESIGNATED BY THE ENGINEER SHALL BE REMOVED, STORED AND SUBSEQUENTLY RELOCATED BY THE CONTRACTOR. ANY SIGNS WHICH ARE DAMAGED DURING CONSTRUCTION OPERATIONS BEYOND REPAIR SHALL BE REPLACED IN KIND BY THE CONTRACTOR TO THE SATISFACTION OF THE ENGINEER IN ACCORDANCE WITH ARTICLE 107.25 OF THE STANDARD SPECIFICATIONS.
- 2. WHEN DIRECTED BY THE ENGINEER, SUPPLEMENTAL WATERING SHALL BE APPLIED TO ALL SEEDED/SODDED AREAS PRIOR TO FINAL ACCEPTANCE AT A RATE SPECIFIED BY THE ENGINEER AND IN ACCORDANCE WITH THE STANDARD SPECIFICATIONS AND SPECIAL PROVISIONS.
- 3. CONTRACTOR SHALL TAKE PRECAUTION BY PRESERVING EXISTING TREES WITHIN THE RIGHT OF WAY. IF ANY DAMAGE OCCURS, TREES SHALL BE REPLACED IN KIND PER ARTICLE 201.07 REPAIR OR REPLACEMENT OF EXISTING PLANT MATERIAL REQUIREMENTS STATED HEREIN.
- 4. ALL NITROGEN, PHOSPHOROUS AND POTASSIUM FERTILIZER NUTRIENTS HAVE BEEN INTENTIONALLY OMITTED FROM THE CONTRACT ON THE SODDING APPLICATION.
- 5. BEFORE BEGINNING ANY WORK, THE CONTRACTOR SHALL RETAIN AND RECORD FOR FUTURE REFERENCE ALL EXISTING PAVEMENT MARKING LINES AND RAISED REFLECTIVE PAVEMENT MARKERS IN ORDER THAT THESE LOCATIONS CAN BE RE-ESTABLISHED FOR STRIPING. EXACT LOCATIONS OF ALL PAVEMENT MARKINGS SHALL BE AS DIRECTED BY THE ENGINEER.
- 6. THE RESIDENT ENGINEER SHALL NOTIFY EMAD ALHUSSEINI AREA TRAFFIC FIELD ENGINEER AT EMAD.ALHUSSEINI@ILLINOIS.GOV AT LEAST TWO WEEKS PRIOR TO PLACEMENT OF FINAL PAVEMENT MARKINGS.
- 7. ALL DAMAGE TO EXISTING PAVEMENT MARKINGS OR RAISED REFLECTIVE PAVEMENT MARKERS OUTSIDE THE REMOVAL LINE SHOWN ON THE PLANS SHALL BE REPLACED.

COMMITMENTS

NO COMMITMENTS

MODEL: Default
FILE NAME: C:\3035196 - Addison Township IL83 West Frontage Road\CADD\Sheet02_GenNotes.dgn



DESIGNED	-	TGB	REVISED	-
DRAWN	-	KM	REVISED	-
CHECKED	-	RTM	REVISED	-
DATE	-	4/21/2025	REVISED	-

STATE OF ILLINOIS
DEPARTMENT OF TRANSPORTATION

INDEX OF SHEETS, GENERAL NOTES AND LIST OF STANDARDS

	SHEET	1	OF	1	SHEETS	STA.	TO STA.
--	-------	---	----	---	--------	------	---------

T.R.	SECTION	COUNTY	TOTAL SHEETS	SHEET NO.
3367	24-01121-00-PV	DUPAGE	21	2
		CONTRACT NO. 61L45		
FED. ROAD DIST. NO. 1		ILLINOIS	FED. AID PROJECT	

SPECIALTY ITEM	CODE NO.	ITEM	UNIT	0005 ROADWAY RESURFACING MAINTENANCE 80% FED 20% LOCAL
	20200100	EARTH EXCAVATION	CU YD	110
	20201200	REMOVAL AND DISPOSAL OF UNSUITABLE MATERIAL	CU YD	167
	21101615	TOPSOIL FURNISH AND PLACE, 4"	SQ YD	136
	25200110	SODDING, SALT TOLERANT	SQ YD	136
	25200200	SUPPLEMENTAL WATERING	UNIT	8
	28000510	INLET FILTERS	EACH	26
	30300001	AGGREGATE SUBGRADE IMPROVEMENT	CU YD	149
	35101800	AGGREGATE BASE COURSE, TYPE B 6"	SQ YD	436
	40600275	BITUMINOUS MATERIALS (PRIME COAT)	POUND	189
	40600290	BITUMINOUS MATERIALS (TACK COAT)	POUND	5511
	40600370	LONGITUDINAL JOINT SEALANT	FOOT	2794
	40600400	MIXTURE FOR CRACKS, JOINTS, AND FLANGEWAYS	TON	35
	40600982	HOT-MIX ASPHALT SURFACE REMOVAL - BUTT JOINT	SQ YD	33
	40600985	PORTLAND CEMENT CONCRETE SURFACE REMOVAL - BUTT JOINT	SQ YD	16
	40603080	HOT-MIX ASPHALT BINDER COURSE, IL-19.0, N50	TON	18

MODEL: Default
FILE NAME: Y:\Jobs\5996 - Addison Township IL\3 West Frontage Road\CAD\Sheet03_Seq.dgn



DESIGNED	-	TGB
DRAWN	-	KM
CHECKED	-	RTM
DATE	-	4/21/2025

REVISED	-
REVISED	-
REVISED	-
REVISED	-

STATE OF ILLINOIS
DEPARTMENT OF TRANSPORTATION

SUMMARY OF QUANTITIES

	SHEET	1	OF	4	SHEETS	STA.	TO STA.
--	-------	---	----	---	--------	------	---------

T.R.	SECTION	COUNTY	TOTAL SHEETS	SHEET NO.
3367	24-01121-00-PV	DUPAGE	21	3
CONTRACT NO. 61L45				
FED. ROAD DIST. NO. 1	ILLINOIS	FED. AID PROJECT		

NOTES: 1. Detail
FILE NAME: Y:\01051905 - Addison Township IL83 West Frontage Road\CAD\Sheet03_Sum.dgn



DESIGNED	-	TGB
DRAWN	-	KM
CHECKED	-	RTM
DATE	-	4/21/2025

REVISED	-
REVISED	-
REVISED	-
REVISED	-

STATE OF ILLINOIS
DEPARTMENT OF TRANSPORTATION

SUMMARY OF QUANTITIES


SHEET	2	OF	4	SHEETS	STA.	TO STA.
-------	---	----	---	--------	------	---------

T.R.	SECTION	COUNTY	TOTAL SHEETS	SHEET NO.
3367	24-01121-00-PV	DUPAGE	21	4
CONTRACT NO. 61L45				
FED. ROAD DIST. NO. 1	ILLINOIS	FED. AID PROJECT		

SPECIALTY ITEM	CODE NO.	ITEM	UNIT	0005 ROADWAY RESURFACING MAINTENANCE 80% FED 20% LOCAL
	40603200	POLYMERIZED HOT-MIX ASPHALT BINDER COURSE, IL-4.75, N50	TON	254
	40604060	HOT-MIX ASPHALT SURFACE COURSE, IL-9.5, MIX "D", N50	TON	778
	42001300	PROTECTIVE COAT	SQ YD	338
	44000158	HOT-MIX ASPHALT SURFACE REMOVAL, 2 1/4"	SQ YD	741
	44000164	HOT-MIX ASPHALT SURFACE REMOVAL, 3 3/4"	SQ YD	122
	44000200	DRIVEWAY PAVEMENT REMOVAL	SQ YD	42
	44000500	COMBINATION CURB AND GUTTER REMOVAL	FOOT	998
	44201725	CLASS D PATCHES, TYPE I, 7 INCH	SQ YD	90
	44201729	CLASS D PATCHES, TYPE II, 7 INCH	SQ YD	134
	44201733	CLASS D PATCHES, TYPE III, 7 INCH	SQ YD	400
	44201735	CLASS D PATCHES, TYPE IV, 7 INCH	SQ YD	268
	48101500	AGGREGATE SHOULDERS, TYPE B 6"	SQ YD	220
	60300105	FRAMES AND GRATES TO BE ADJUSTED	EACH	5
	60404950	FRAMES AND GRATES, TYPE 24	EACH	5
	60406000	FRAMES AND LIDS, TYPE 1, OPEN LID	EACH	3

SPECIALTY ITEM	CODE NO.	ITEM	UNIT	0005 ROADWAY RESURFACING MAINTENANCE 80% FED 20% LOCAL
	60605000	COMBINATION CONCRETE CURB AND GUTTER, TYPE B-6.24	FOOT	998
	67100100	MOBILIZATION	L SUM	1
	70102620	TRAFFIC CONTROL AND PROTECTION, STANDARD 701501	L SUM	1
	70107025	CHANGEABLE MESSAGE SIGN	CAL DA	28
	70300100	SHORT TERM PAVEMENT MARKING	FOOT	881
	70300150	SHORT TERM PAVEMENT MARKING REMOVAL	SQ FT	98
X	78000200	THERMOPLASTIC PAVEMENT MARKING - LINE 4"	FOOT	9672
X	78000650	THERMOPLASTIC PAVEMENT MARKING - LINE 24"	FOOT	38
X	78100100	RAISED REFLECTIVE PAVEMENT MARKER	EACH	75
	78300200	RAISED REFLECTIVE PAVEMENT MARKER REMOVAL	EACH	77
	LR443200	STRIP REFLECTIVE CRACK CONTROL TREATMENT	FOOT	4307
	X4400100	PORTLAND CEMENT CONCRETE SURFACE REMOVAL (VARIABLE DEPTH)	SQ YD	7367
	Z0013798	CONSTRUCTION LAYOUT	L SUM	1

MODEL: DRAFT
FILE NAME: Y:\06043596 - Addison Township IL23 West Frontage Road\CD\Sheet03_Seq.dgn

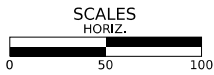
	DESIGNED - TGB	REVISED -	STATE OF ILLINOIS DEPARTMENT OF TRANSPORTATION		SUMMARY OF QUANTITIES	T.R.	SECTION	COUNTY	TOTAL SHEETS	SHEET NO.
	DRAWN - KM	REVISED -				3367	24-01121-00-PV	DUPAGE	21	5
	CHECKED - RTM	REVISED -				CONTRACT NO. 61L45				
	DATE - 4/21/2025	REVISED -				FED. ROAD DIST. NO. 1 ILLINOIS FED. AID PROJECT				
	SHEET 3 OF 4 SHEETS STA. TO STA.									

MODEL Sheet
FILE NAME: C:\Users\596 - Addison Township_IL83 West Frontage Road\CADD\Sheet04_A1B.dgn



DESIGNED -	TGB	REVISED -	
DRAWN -	KM	REVISED -	
CHECKED -	RTM	REVISED -	
DATE	4/21/2025	REVISED -	

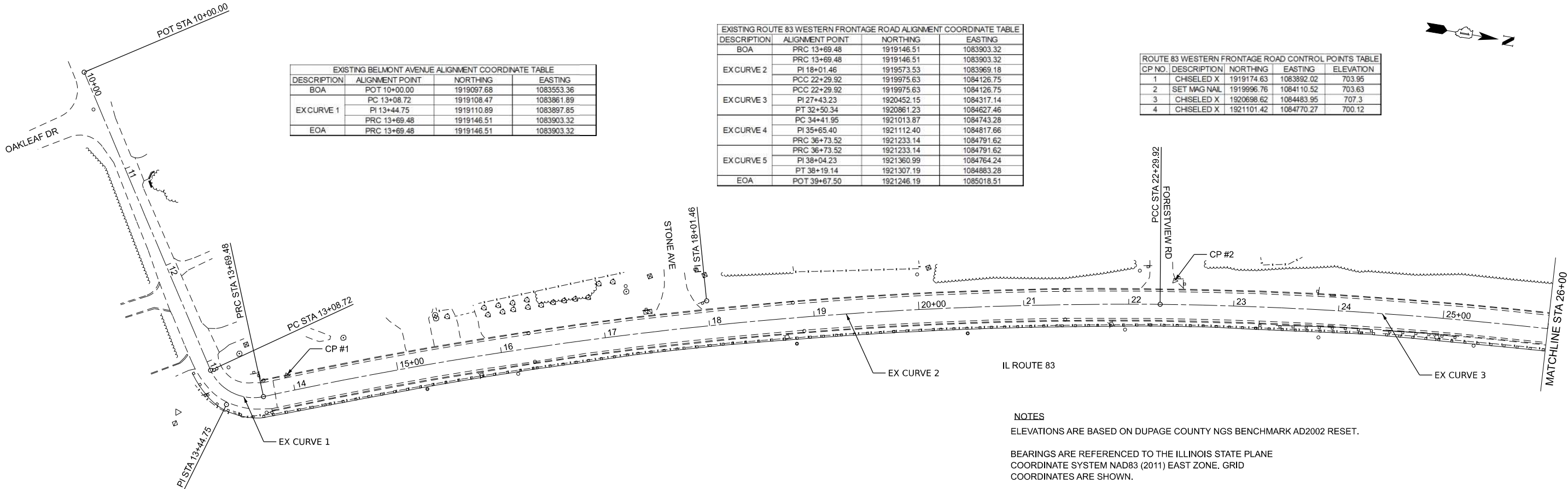
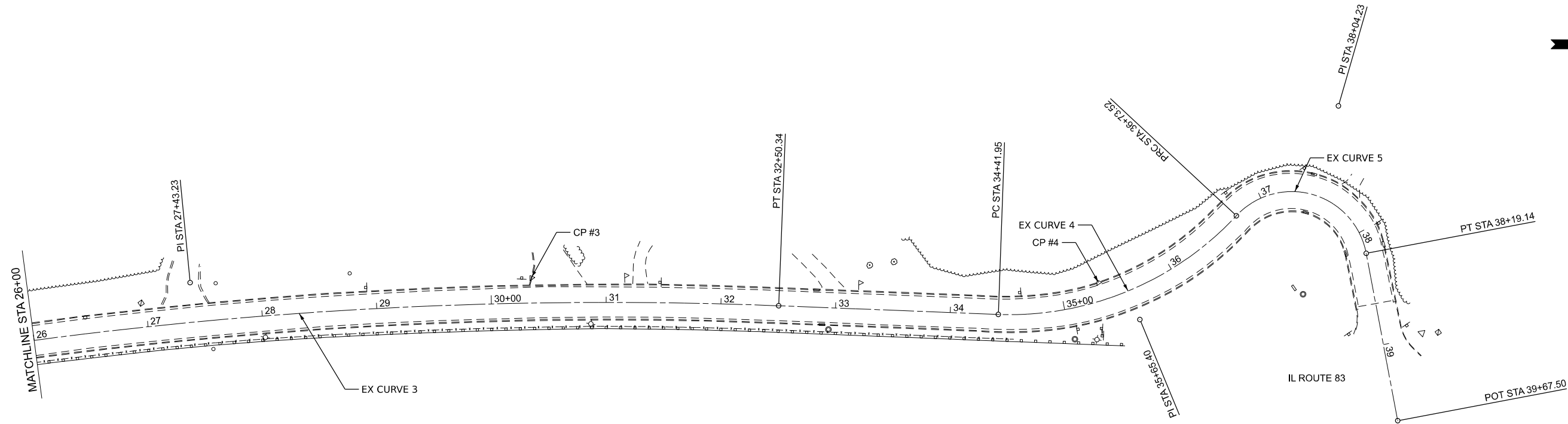
STATE OF ILLINOIS
DEPARTMENT OF TRANSPORTATION



ALIGNMENT, TIES & BENCHMARKS
EXISTING ALIGNMENT

SHEET 1 OF 1 SHEETS STA. TO STA.

T.R.	SECTION	COUNTY	TOTAL SHEETS	SHEET NO.
3367	24-01121-00-PV	DUPAGE	21	6
CONTRACT NO. 61L45				
FED. ROAD DIST. NO. 1	ILLINOIS	FED. AID PROJECT		



EXISTING BELMONT AVENUE ALIGNMENT COORDINATE TABLE			
DESCRIPTION	ALIGNMENT POINT	NORTHING	EASTING
BOA	POT 10+00.00	1919087.68	1083553.36
	PC 13+08.72	1919108.47	1083861.89
EX CURVE 1	PI 13+44.75	1919110.89	1083897.85
	PRC 13+69.48	1919146.51	1083903.32
EOA	PRC 13+69.48	1919146.51	1083903.32

EXISTING ROUTE 83 WESTERN FRONTAGE ROAD ALIGNMENT COORDINATE TABLE			
DESCRIPTION	ALIGNMENT POINT	NORTHING	EASTING
BOA	PRC 13+69.48	1919146.51	1083903.32
	PRC 13+69.48	1919146.51	1083903.32
EX CURVE 2	PI 18+01.46	1919573.53	1083969.18
	PCC 22+29.92	1919975.63	1084126.75
EX CURVE 3	PCC 22+29.92	1919975.63	1084126.75
	PI 27+43.23	1920452.15	1084317.14
EX CURVE 4	PT 32+50.34	1920861.23	1084627.46
	PC 34+41.95	1921013.87	1084743.28
EX CURVE 5	PI 35+65.40	1921112.40	1084817.66
	PRC 36+73.52	1921233.14	1084791.62
EOA	POT 39+67.50	1921246.19	1085018.51

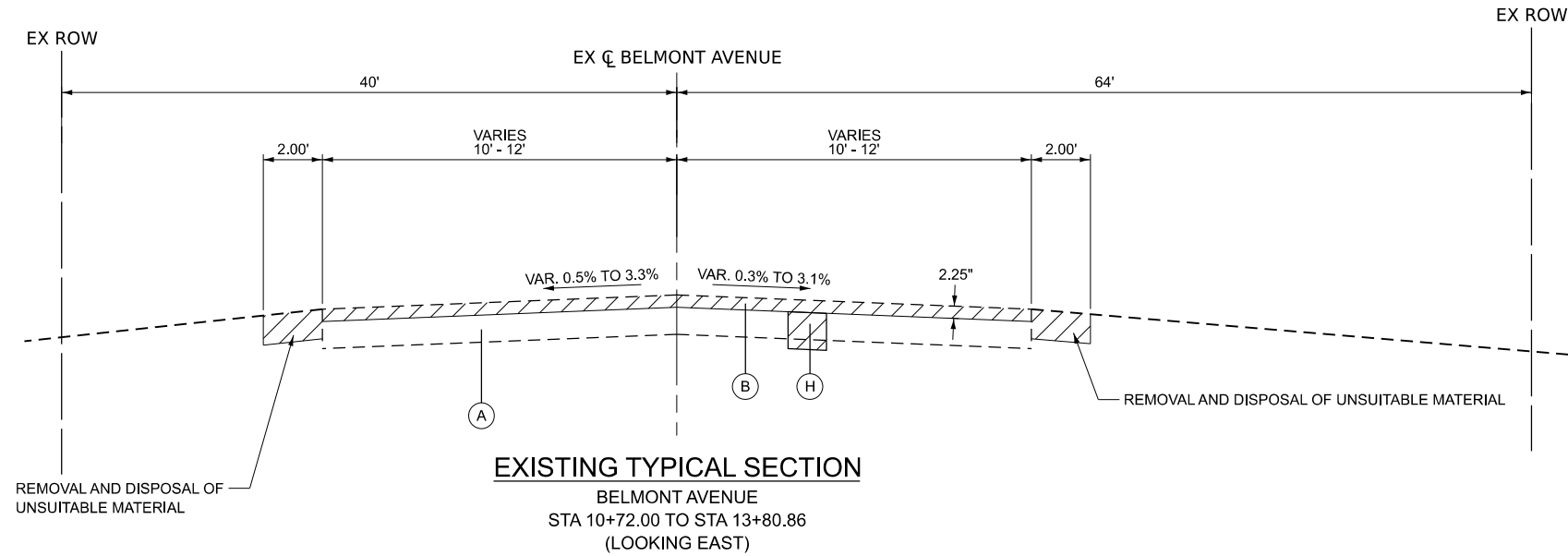
ROUTE 83 WESTERN FRONTAGE ROAD CONTROL POINTS TABLE				
CP NO.	DESCRIPTION	NORTHING	EASTING	ELEVATION
1	CHSELED X	1919174.63	1083892.02	703.95
2	SET MAG NAIL	1919996.76	1084110.52	703.63
3	CHSELED X	1920698.62	1084483.95	707.3
4	CHSELED X	1921101.42	1084770.27	700.12

NOTES

ELEVATIONS ARE BASED ON DUPAGE COUNTY NGS BENCHMARK AD2002 RESET.



BEARINGS ARE REFERENCED TO THE ILLINOIS STATE PLANE
COORDINATE SYSTEM NAD83 (2011) EAST ZONE. GRID
COORDINATES ARE SHOWN.

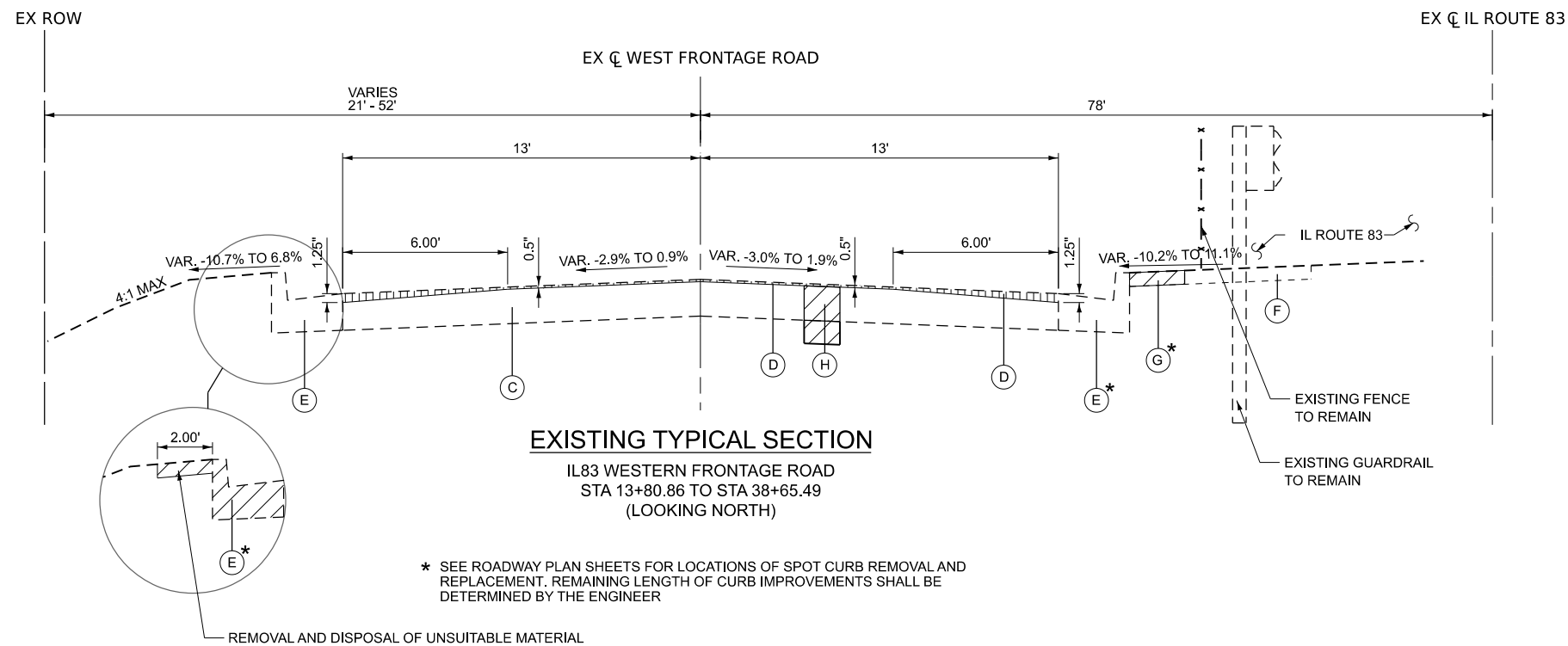
VERTICAL CONTROL REFERENCED TO NAVD 88.



LEGEND

- (A) EXISTING HMA PAVEMENT
- (B) HOT-MIX ASPHALT SURFACE REMOVAL, 2.25"
- (C) EXISTING JOINTED PCC PAVEMENT, 8"
- (D) PORTLAND CEMENT CONCRETE SCARIFICATION, DEPTH RANGES FROM 0.5" TO 1.25" PAID FOR AS "PORTLAND CEMENT CONCRETE SURFACE REMOVAL (VARIABLE DEPTH)"
- (E) EXISTING COMBINATION CONCRETE CURB AND GUTTER, TYPE B-6.24 (SPOT CURB REMOVAL AND REPLACEMENT TO BE DETERMINED BY THE ENGINEER)
- (F) EXISTING AGGREGATE SHOULDER
- (G) AGGREGATE SHOULDER REMOVAL
- (H) CLASS D PATCHES (AS DIRECTED BY THE ENGINEER)

-  REMOVAL ITEM
-  PCC SCARIFICATION



* SEE ROADWAY PLAN SHEETS FOR LOCATIONS OF SPOT CURB REMOVAL AND REPLACEMENT. REMAINING LENGTH OF CURB IMPROVEMENTS SHALL BE DETERMINED BY THE ENGINEER

MODEL: Default
FILE NAME: C:\3367\3367-Addition\Township IL83 West Frontage Road\CADD\Sheet05_Typicals.dgn



DESIGNED	-	TGB	REVISED	-
DRAWN	-	KM	REVISED	-
CHECKED	-	RTM	REVISED	-
DATE	-	4/21/2025	REVISED	-

STATE OF ILLINOIS
DEPARTMENT OF TRANSPORTATION

EXISTING TYPICAL SECTIONS

SHEET 1 OF 2 SHEETS STA. TO STA.

T.R.	SECTION	COUNTY	TOTAL SHEETS	SHEET NO.
3367	24-01121-00-PV	DUPAGE	21	7
CONTRACT NO. 61L45				
FED. ROAD DIST. NO. 1	ILLINOIS	FED. AID PROJECT		

HOT-MIX ASPHALT MIXTURE REQUIREMENTS

MIXTURE TYPE	AIR VOIDS @ NDES	QMP
FRONTAGE ROAD OVERLAY		
HOT-MIX ASPHALT SURFACE COURSE, IL 9.5, MIX "D" , N50; 1.5" TO 2.25"	4% @ 50 GYR	LR 1030-2
POLYMERIZED HOT-MIX ASPHALT BINDER COURSE, IL-4.75, N50, 1"	3.5% @ 50 GYR	LR 1030-2
BELMONT AVENUE RESURFACING		
HOT-MIX ASPHALT SURFACE COURSE, IL 9.5, MIX "D" , N50; 1.5"	4% @ 50 GYR	LR 1030-2
POLYMERIZED HOT-MIX ASPHALT BINDER COURSE, IL-4.75, N50, 0.75"	3.5% @ 50 GYR	LR 1030-2
SIDE ROAD PAVEMENT (BEHIND CURB REPAIRS)		
HOT-MIX ASPHALT SURFACE COURSE, IL 9.5, MIX "D" , N50; 1.5"	4% @ 50 GYR	LR 1030-2
HOT-MIX ASPHALT BINDER COURSE, IL-19.0, N50; 2.25"	4% @ 50 GYR	LR 1030-2
DRIVEWAYS (BEHIND CURB REPAIRS)		
HOT-MIX ASPHALT SURFACE COURSE, IL 9.5, MIX "D" , N50; 3" (2 LIFTS)	4% @ 50 GYR	LR 1030-2
PATCHING		
CLASS D PATCHES (HMA BINDER IL-19MM)	4% @ 70 GYR	LR 1030-2
QMP DESIGNATIONS: QUALITY CONTROL/QUALITY ASSURANCE (QC/QA) PER LR 1030-2		

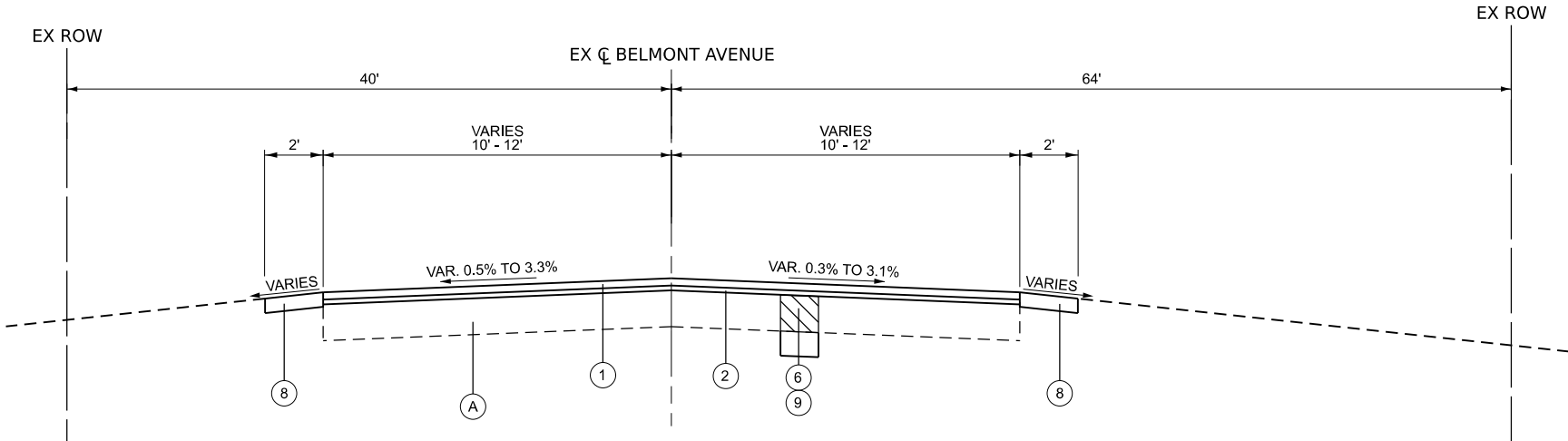
1. THE UNIT WEIGHT USED TO CALCULATE ALL HMA SURFACE MIXTURE QUANTITIES IS 112 LBS/SQ YD/IN.
2. THE "AC TYPE" FOR POLYMERIZED HMA MIXES SHALL BE "SBS/SBR PG 76 -22" AND FOR NON-POLYMERIZED HMA THE "AC TYPE" SHALL BE "PG 64 -22" UNLESS MODIFIED BY RECLAIMED MATERIALS SPECIFICATIONS.
3. LONGITUDINAL JOINT SEALANT SHALL BE PLACED ALONG THE ROADWAY CENTERLINE, UNDER THE HMA SURFACE COURSE.
4. STRIP REFLECTIVE CRACK CONTROL TREATMENT SHALL BE PLACED AT TRANSVERSE JOINT LINES, ON MILLED OR SCARIFIED PCC PAVEMENT SURFACE, BEFORE BINDER COURSE IS PLACED.

PROPOSED LEGEND

- 1 HOT-MIX ASPHALT SURFACE COURSE, IL 9.5, MIX "D" , N50; 1.5" TO 2.25"
- 2 POLYMERIZED HOT-MIX ASPHALT BINDER COURSE, IL-4.75, N50; 0.75"
- 3 POLYMERIZED HOT-MIX ASPHALT BINDER COURSE, IL-4.75, N50; 1"
- 4 COMBINATION CONCRETE CURB AND GUTTER, TYPE B-6.24
(SPOT CURB REMOVAL AND REPLACEMENT TO BE DETERMINED BY THE ENGINEER)
- 5 AGGREGATE BASE COURSE, TYPE B, 6"
- 6 CLASS D PATCHES
(AS DIRECTED BY THE ENGINEER)
- 7 TOPSOIL FURNISH AND PLACE, 4"
SODDING, SALT TOLERANT
- 8 AGGREGATE SHOULDERS, TYPE B 6"
- 9 UNDERCUT AS DIRECTED BY THE ENGINEER:
REMOVAL AND DISPOSAL OF UNSUITABLE MATERIAL
AGGREGATE SUBGRADE IMPROVEMENT

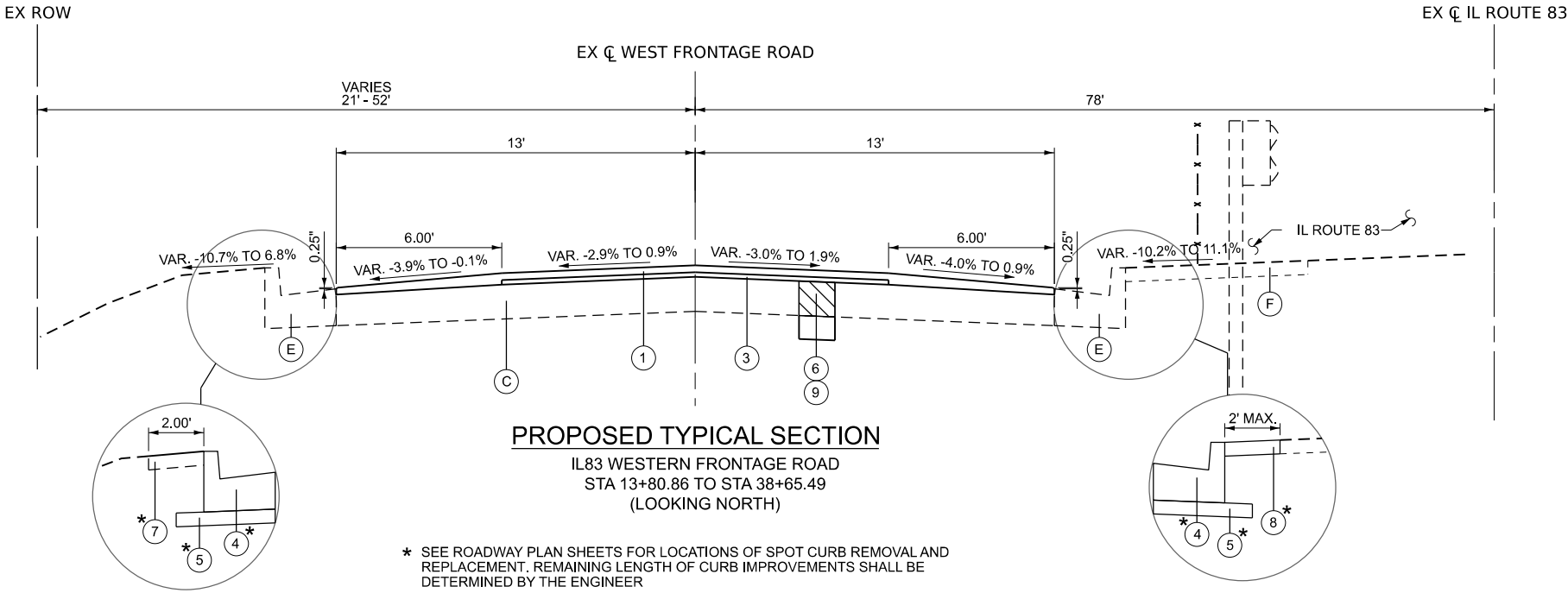
EXISTING LEGEND

- A EXISTING HMA PAVEMENT
- B HOT-MIX ASPHALT SURFACE REMOVAL, 2.25"
- C EXISTING JOINTED PCC PAVEMENT, 8"
- D PORTLAND CEMENT CONCRETE SCARIFICATION, DEPTH RANGES FROM 0.5" TO 1.25"
PAID FOR AS "PORTLAND CEMENT CONCRETE SURFACE REMOVAL (VARIABLE DEPTH)"
- E EXISTING COMBINATION CONCRETE CURB AND GUTTER, TYPE B-6.24
(SPOT CURB REMOVAL AND REPLACEMENT TO BE DETERMINED BY THE ENGINEER)
- F EXISTING AGGREGATE SHOULDER
- G AGGREGATE SHOULDER REMOVAL
- H CLASS D PATCHES
(AS DIRECTED BY THE ENGINEER)



PROPOSED TYPICAL SECTION

BELMONT AVENUE
STA 10+72.00 TO STA 13+80.86
(LOOKING EAST)



PROPOSED TYPICAL SECTION

IL83 WESTERN FRONTAGE ROAD
STA 13+80.86 TO STA 38+65.49
(LOOKING NORTH)

* SEE ROADWAY PLAN SHEETS FOR LOCATIONS OF SPOT CURB REMOVAL AND REPLACEMENT. REMAINING LENGTH OF CURB IMPROVEMENTS SHALL BE DETERMINED BY THE ENGINEER

DESIGNED -	TGB	REVISED -	
DRAWN -	KM	REVISED -	
CHECKED -	RTM	REVISED -	
DATE -	4/21/2025	REVISED -	

T.R.	SECTION	COUNTY	TOTAL SHEETS	SHEET NO.
3367	24-01121-00-PV	DUPAGE	21	8
CONTRACT NO. 61L45				
FED. ROAD DIST. NO. 1 ILLINOIS FED. AID PROJECT				

REMOVAL LEGEND

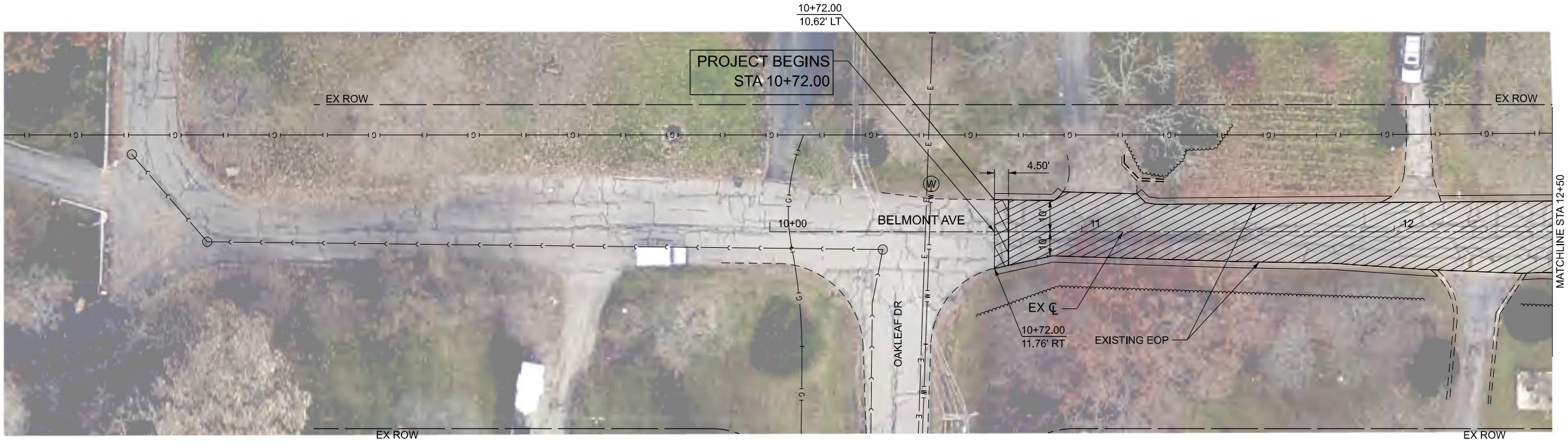
PORTLAND CEMENT CONCRETE SURFACE REMOVAL (VARIABLE DEPTH)

HOT-MIX ASPHALT SURFACE REMOVAL, 2.25"

HOT-MIX ASPHALT SURFACE REMOVAL, 3.75"

HOT-MIX ASPHALT SURFACE REMOVAL - BUTT JOINT

PORTLAND CEMENT CONCRETE SURFACE REMOVAL - BUTT JOINT



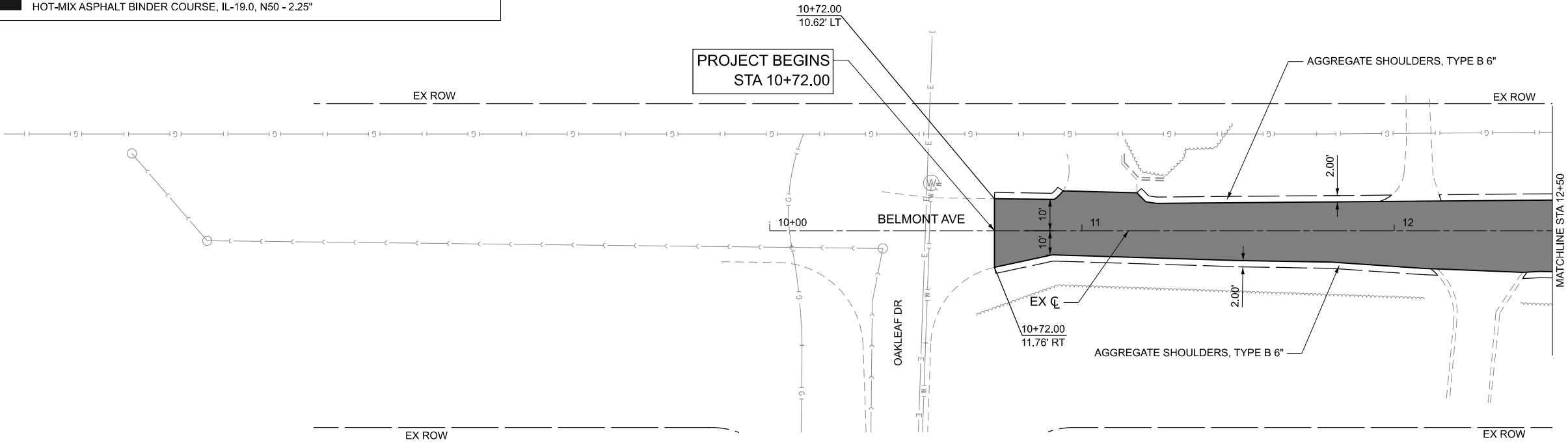
EXISTING

PROPOSED LEGEND

HOT-MIX ASPHALT SURFACE COURSE, IL-9.5, MIX "D", N50; 1.5" TO 2.25"
POLYMERIZED HOT-MIX ASPHALT BINDER COURSE, IL-4.75, N50, 1"
(SEE PROPOSED TYPICAL SECTION FOR DETAILS OF VARIABLE SURFACE COURSE DEPTH)

HOT-MIX ASPHALT SURFACE COURSE, IL-9.5, MIX "D", N50; 1.5"
POLYMERIZED HOT-MIX ASPHALT BINDER COURSE, IL-4.75, N50, 0.75"

HOT-MIX ASPHALT SURFACE COURSE, IL-9.5, MIX "D", N50 - 1.5"
HOT-MIX ASPHALT BINDER COURSE, IL-19.0, N50 - 2.25"



PROPOSED

MODEL: Sheet
FILE NAME: C:\Jobs\596 - Addison Township IL83 West Frontage Road\CADD\Sheet06_Plan.dgn



DESIGNED -	TGB	REVISED -	
DRAWN -	KM	REVISED -	
CHECKED -	RTM	REVISED -	
DATE -	4/21/2025	REVISED -	

STATE OF ILLINOIS
DEPARTMENT OF TRANSPORTATION



ROADWAY PLAN			
SHEET	1	OF	6 SHEETS
STA.	TO STA.		

T.R.	SECTION	COUNTY	TOTAL SHEETS	SHEET NO.
3367	24-01121-00-PV	DUPAGE	21	9
CONTRACT NO. 61L45				
FED. ROAD DIST. NO. 1 ILLINOIS FED. AID PROJECT				

REMOVAL LEGEND

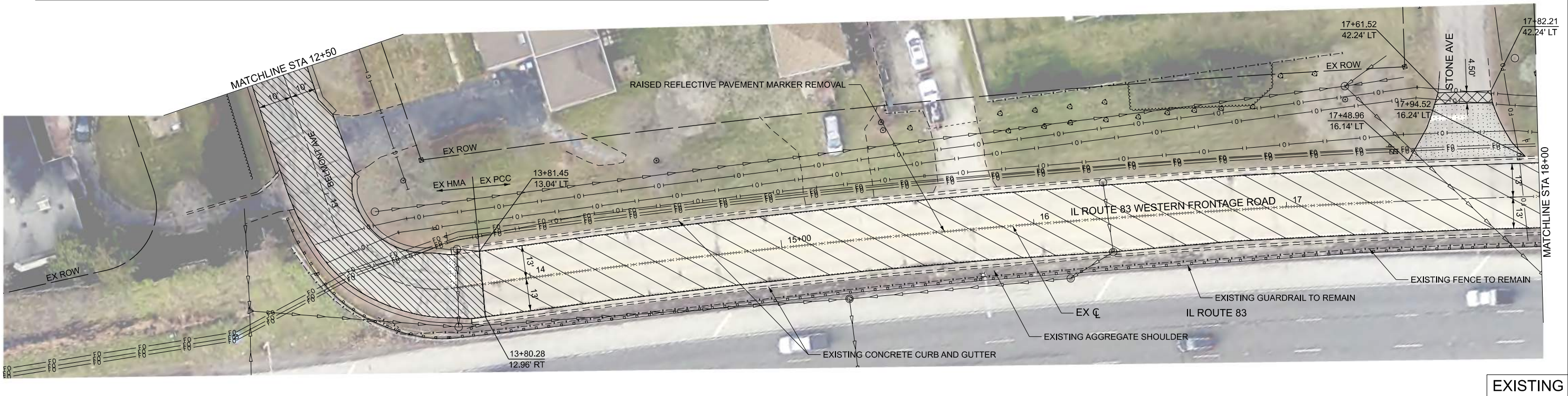
PORTLAND CEMENT CONCRETE SURFACE REMOVAL (VARIABLE DEPTH)

HOT-MIX ASPHALT SURFACE REMOVAL, 2.25"

HOT-MIX ASPHALT SURFACE REMOVAL, 3.75"

HOT-MIX ASPHALT SURFACE REMOVAL - BUTT JOINT

PORTLAND CEMENT CONCRETE SURFACE REMOVAL - BUTT JOINT



EXISTING

PROPOSED LEGEND

HOT-MIX ASPHALT SURFACE COURSE, IL-9.5, MIX "D", N50; 1.5" TO 2.25"

POLYMERIZED HOT-MIX ASPHALT BINDER COURSE, IL-4.75, N50, 1"

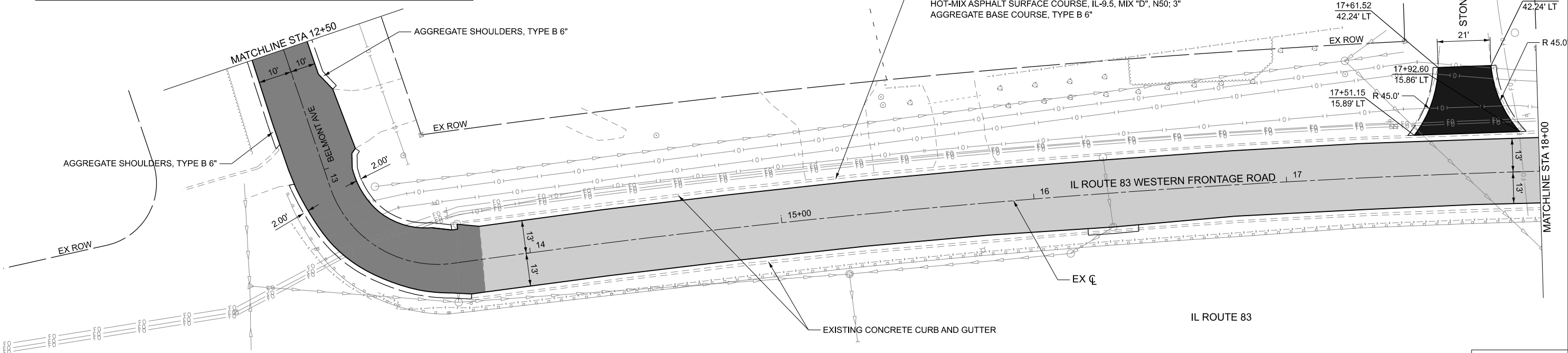
(SEE PROPOSED TYPICAL SECTION FOR DETAILS OF VARIABLE SURFACE COURSE DEPTH)

HOT-MIX ASPHALT SURFACE COURSE, IL-9.5, MIX "D", N50; 1.5"

POLYMERIZED HOT-MIX ASPHALT BINDER COURSE, IL-4.75, N50, 0.75"

HOT-MIX ASPHALT SURFACE COURSE, IL-9.5, MIX "D", N50 - 1.5"

HOT-MIX ASPHALT BINDER COURSE, IL-19.0, N50 - 2.25"



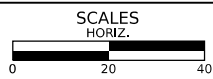
PROPOSED

MODEL: Sheet
FILE NAME: C:\Users\596 - Addison, Township IL83 West Frontage Road\CADD\Sheet06_Plan.dgn



DESIGNED -	TGB	REVISED -	
DRAWN -	KM	REVISED -	
CHECKED -	RTM	REVISED -	
DATE	4/21/2025	REVISED -	

STATE OF ILLINOIS
DEPARTMENT OF TRANSPORTATION



ROADWAY PLAN

SHEET 2 OF 6 SHEETS STA. TO STA.

T.R.	SECTION	COUNTY	TOTAL SHEETS	SHEET NO.
3367	24-01121-00-PV	DUPAGE	21	10
CONTRACT NO. 61145				
FED. ROAD DIST. NO. 1	ILLINOIS	FED. AID PROJECT		

REMOVAL LEGEND

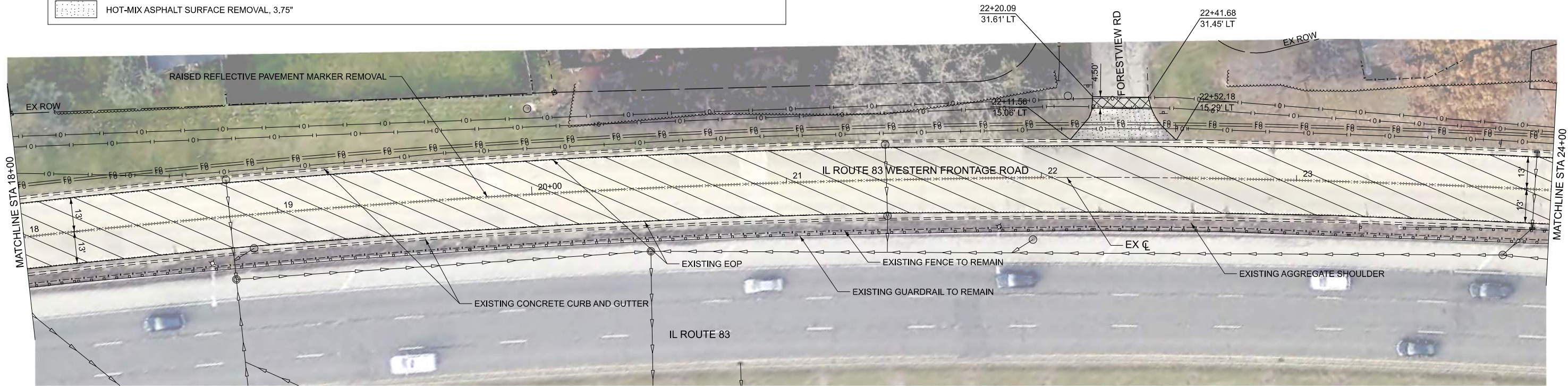
PORTLAND CEMENT CONCRETE SURFACE REMOVAL (VARIABLE DEPTH)

HOT-MIX ASPHALT SURFACE REMOVAL, 2.25"

HOT-MIX ASPHALT SURFACE REMOVAL, 3.75"

HOT-MIX ASPHALT SURFACE REMOVAL - BUTT JOINT

PORTLAND CEMENT CONCRETE SURFACE REMOVAL - BUTT JOINT



EXISTING

PROPOSED LEGEND

HOT-MIX ASPHALT SURFACE COURSE, IL-9.5, MIX "D", N50; 1.5" TO 2.25"

POLYMERIZED HOT-MIX ASPHALT BINDER COURSE, IL-4.75, N50, 1"

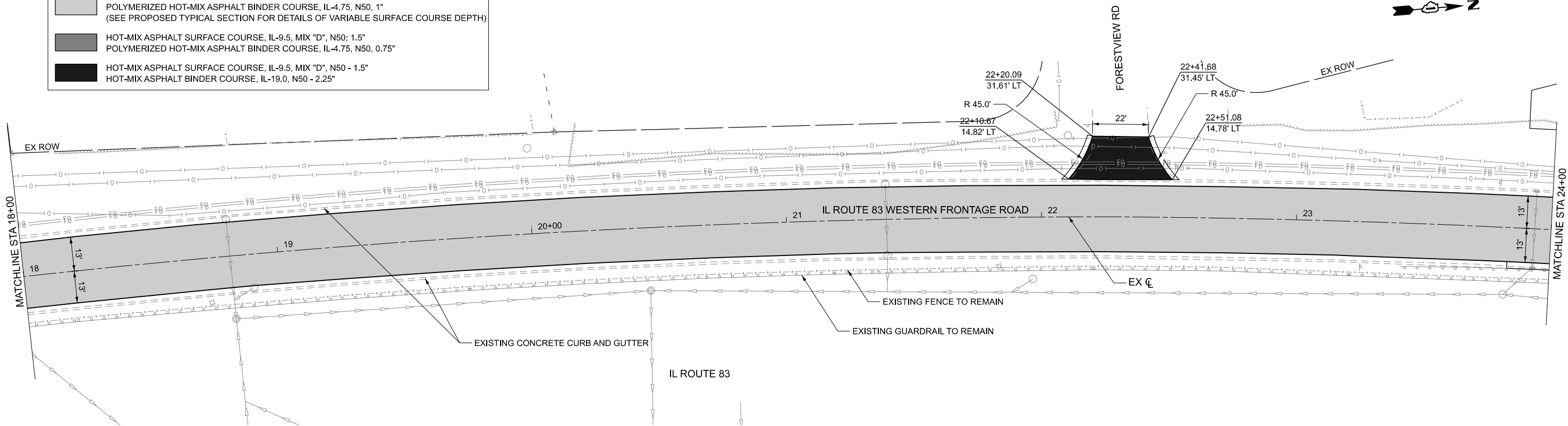
(SEE PROPOSED TYPICAL SECTION FOR DETAILS OF VARIABLE SURFACE COURSE DEPTH)

HOT-MIX ASPHALT SURFACE COURSE, IL-9.5, MIX "D", N50; 1.5"

POLYMERIZED HOT-MIX ASPHALT BINDER COURSE, IL-4.75, N50, 0.75"

HOT-MIX ASPHALT SURFACE COURSE, IL-9.5, MIX "D", N50 - 1.5"

HOT-MIX ASPHALT BINDER COURSE, IL-19.0, N50 - 2.25"



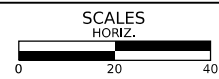
PROPOSED

MODEL: Street
FILE NAME: C:\Users\596 - Addison\Township IL83 West Frontage Road\CADD\Sheet06_Plan.dgn



DESIGNED -	TGB	REVISED -	
DRAWN -	KM	REVISED -	
CHECKED -	RTM	REVISED -	
DATE	4/21/2025	REVISED -	

STATE OF ILLINOIS
DEPARTMENT OF TRANSPORTATION



ROADWAY PLAN

SHEET 3 OF 6 SHEETS STA. TO STA.

T.R.	SECTION	COUNTY	TOTAL SHEETS	SHEET NO.
3367	24-01121-00-PV	DUPAGE	21	11
CONTRACT NO. 61L45				
FED. ROAD DIST. NO. 1 ILLINOIS FED. AID PROJECT				

REMOVAL LEGEND

PORTLAND CEMENT CONCRETE SURFACE REMOVAL (VARIABLE DEPTH)

HOT-MIX ASPHALT SURFACE REMOVAL, 2.25"

HOT-MIX ASPHALT SURFACE REMOVAL, 3.75"

HOT-MIX ASPHALT SURFACE REMOVAL - BUTT JOINT

PORTLAND CEMENT CONCRETE SURFACE REMOVAL - BUTT JOINT

EXISTING

PROPOSED LEGEND

HOT-MIX ASPHALT SURFACE COURSE, IL-9.5, MIX "D", N50; 1.5" TO 2.25"

POLYMERIZED HOT-MIX ASPHALT BINDER COURSE, IL-4.75, N50, 1"

(SEE PROPOSED TYPICAL SECTION FOR DETAILS OF VARIABLE SURFACE COURSE DEPTH)

HOT-MIX ASPHALT SURFACE COURSE, IL-9.5, MIX "D", N50; 1.5"

POLYMERIZED HOT-MIX ASPHALT BINDER COURSE, IL-4.75, N50, 0.75"

HOT-MIX ASPHALT SURFACE COURSE, IL-9.5, MIX "D", N50 - 1.5"

HOT-MIX ASPHALT BINDER COURSE, IL-19.0, N50 - 2.25"

PROPOSED

MODEL: Street
FILE NAME: C:\Users\596 - Addison\Township IL83 West Frontage Road\CADD\Sheet06_Plan.dgn

DESIGNED -	TGB	REVISED -	
DRAWN -	KM	REVISED -	
CHECKED -	RTM	REVISED -	
DATE	4/21/2025	REVISED -	

STATE OF ILLINOIS
DEPARTMENT OF TRANSPORTATION

ROADWAY PLAN

SHEET 4 OF 6 SHEETS STA. TO STA.

T.R.	SECTION	COUNTY	TOTAL SHEETS	SHEET NO.
3367	24-01121-00-PV	DUPAGE	21	12
CONTRACT NO. 61L45				
FED. ROAD DIST. NO. 1 ILLINOIS FED. AID PROJECT				

REMOVAL LEGEND

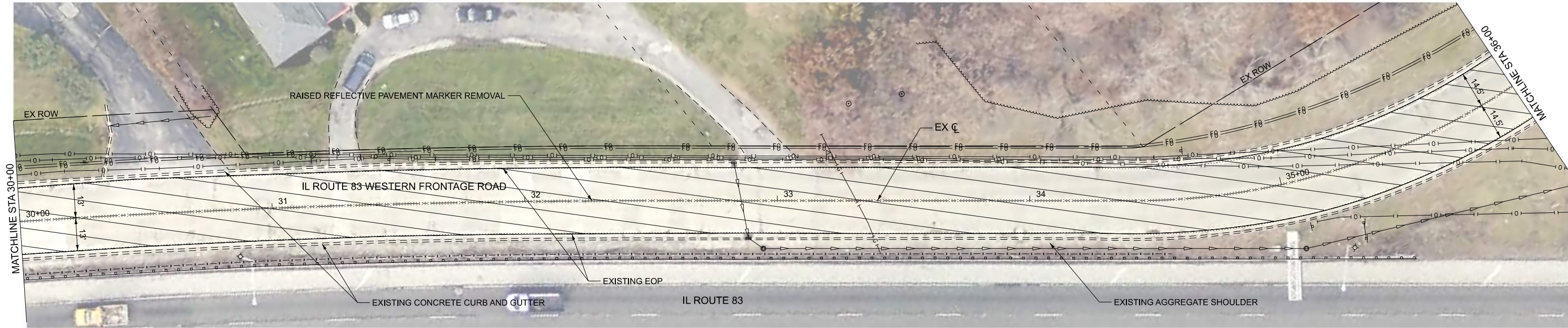
PORTLAND CEMENT CONCRETE SURFACE REMOVAL (VARIABLE DEPTH)

HOT-MIX ASPHALT SURFACE REMOVAL, 2.25"

HOT-MIX ASPHALT SURFACE REMOVAL, 3.75"

HOT-MIX ASPHALT SURFACE REMOVAL - BUTT JOINT

PORTLAND CEMENT CONCRETE SURFACE REMOVAL - BUTT JOINT



EXISTING

PROPOSED LEGEND

HOT-MIX ASPHALT SURFACE COURSE, IL-9.5, MIX "D", N50; 1.5" TO 2.25"

POLYMERIZED HOT-MIX ASPHALT BINDER COURSE, IL-4.75, N50, 1"

(SEE PROPOSED TYPICAL SECTION FOR DETAILS OF VARIABLE SURFACE COURSE DEPTH)

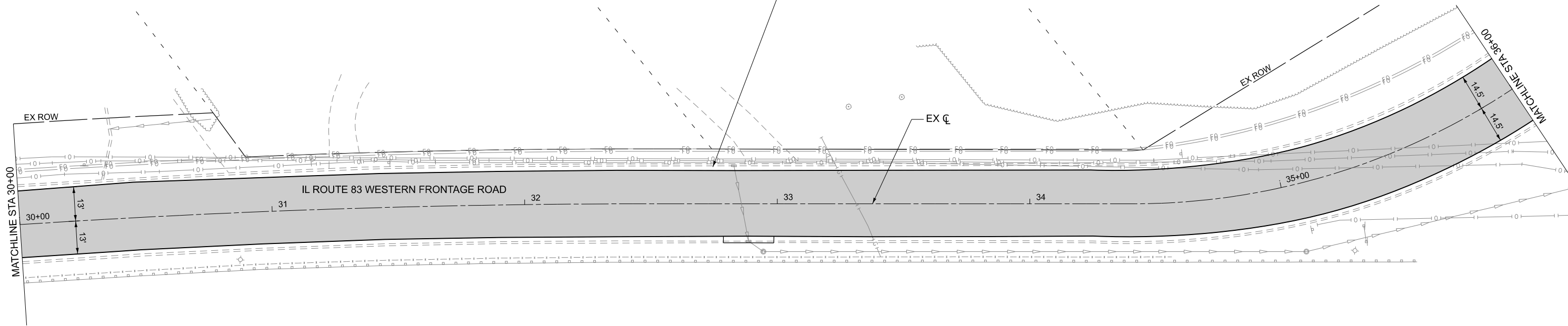
HOT-MIX ASPHALT SURFACE COURSE, IL-9.5, MIX "D", N50; 1.5"

POLYMERIZED HOT-MIX ASPHALT BINDER COURSE, IL-4.75, N50, 0.75"

HOT-MIX ASPHALT SURFACE COURSE, IL-9.5, MIX "D", N50 - 1.5"



HOT-MIX ASPHALT BINDER COURSE, IL-19.0, N50 - 2.25"

CURB REMOVAL AND REPLACEMENT ADJACENT TO EXISTING ENTRANCES AS IDENTIFIED BY THE ENGINEER SHALL INCLUDE RESTORATION OF DRIVEWAY AT 4-FT WIDTH BEHIND THE CURBLINE:
HOT-MIX ASPHALT SURFACE COURSE, IL-9.5, MIX "D", N50; 3"
AGGREGATE BASE COURSE, TYPE B 6"



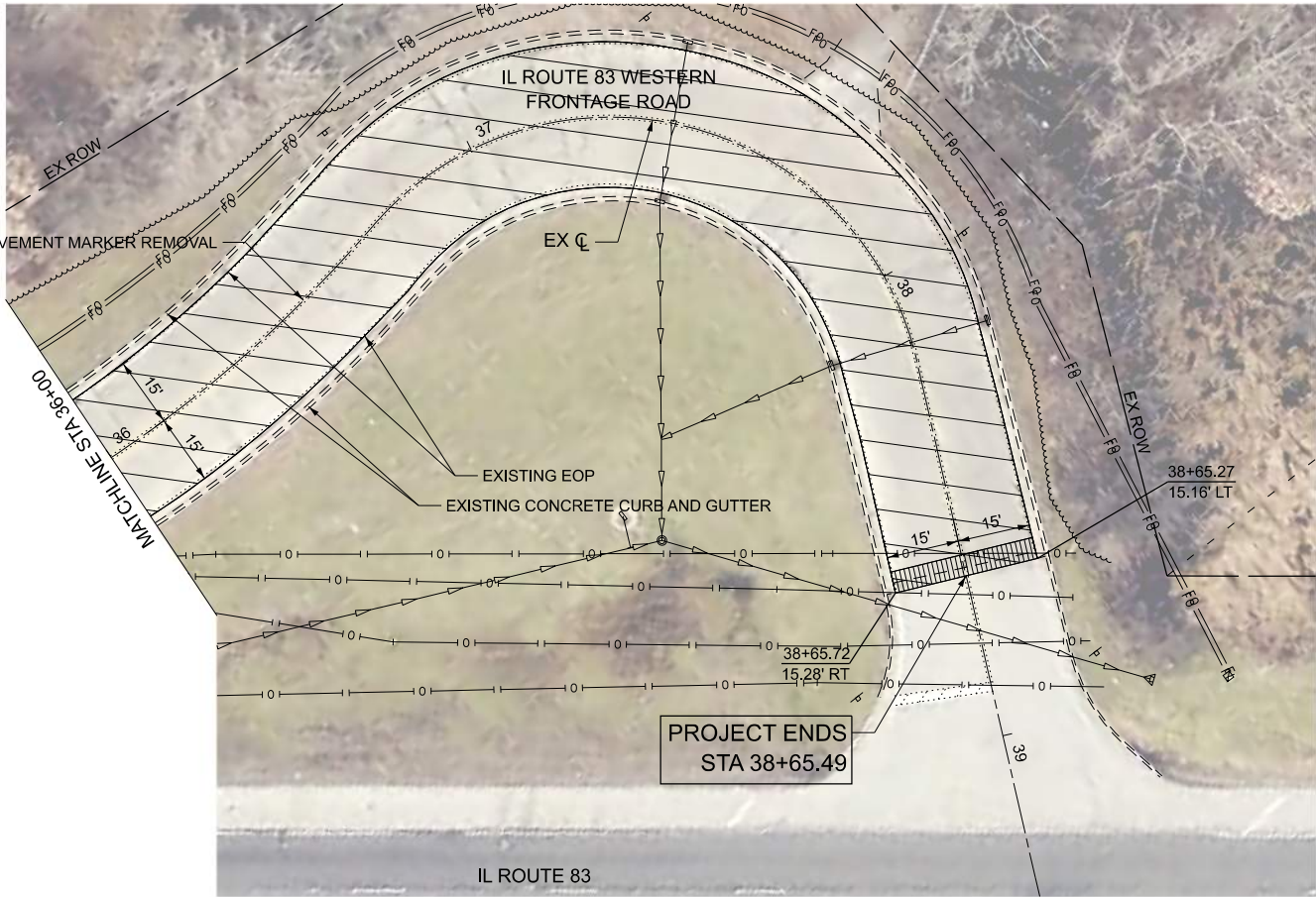
PROPOSED

MODEL: Sheet
FILE NAME: C:\Jobs\596 - Addison Township IL83 West Frontage Road\CADD\Sheet06_Plan.dgn

	DESIGNED - TGB	REVISED -	<div>STATE OF ILLINOIS DEPARTMENT OF TRANSPORTATION</div>	<div>SCALES HORIZ. </div>	ROADWAY PLAN					T.R.	SECTION	COUNTY	TOTAL SHEETS	SHEET NO.
	DRAWN - KM	REVISED -								3367	24-01121-00-PV	DUPAGE	21	13
	CHECKED - RTM	REVISED -			CONTRACT NO. 61L45									
	DATE - 4/21/2025	REVISED -			FED. ROAD DIST. NO. 1 ILLINOIS FED. AID PROJECT									
	SHEET 5 OF 6 SHEETS STA. TO STA.													

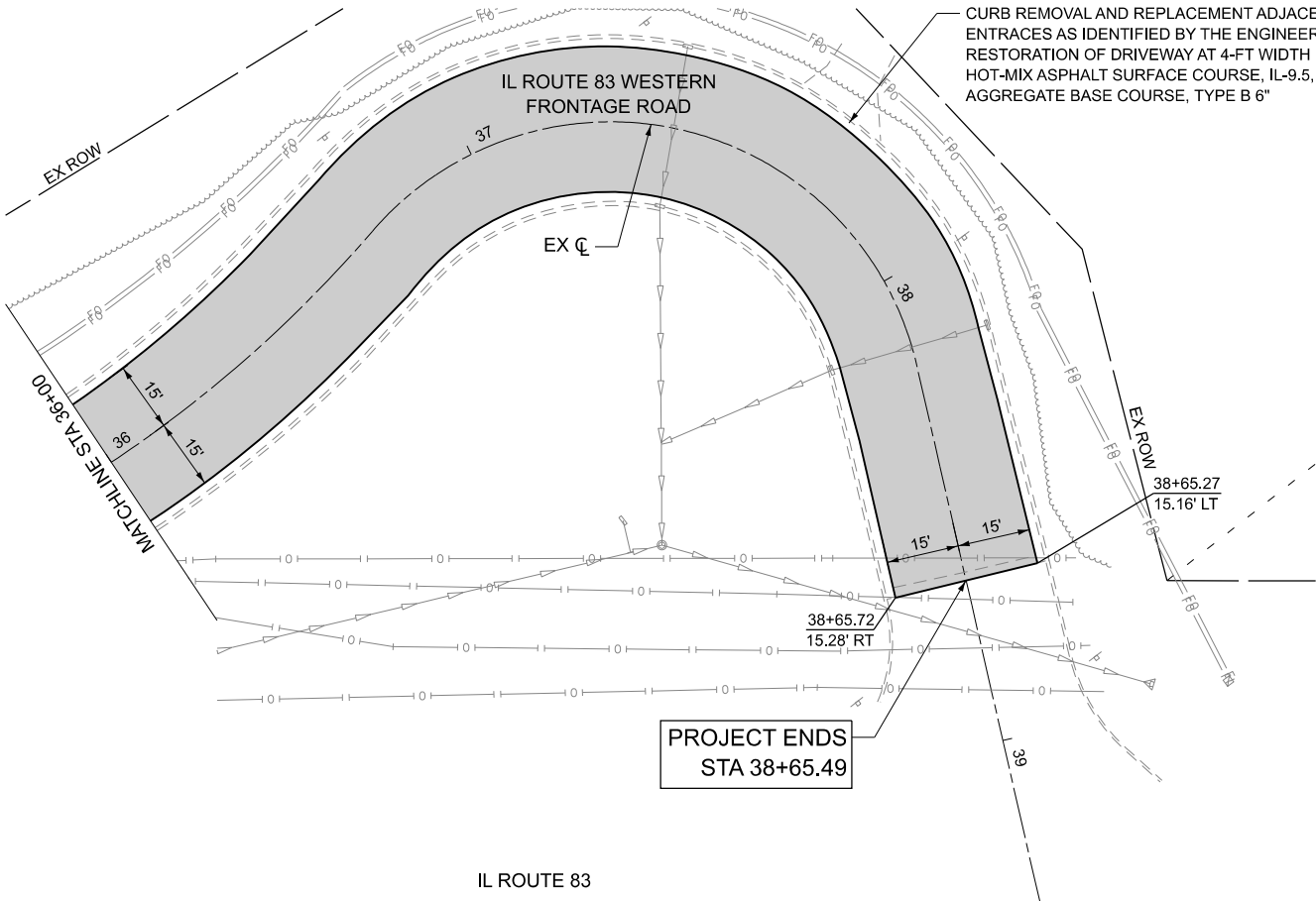
REMOVAL LEGEND	
	PORTLAND CEMENT CONCRETE SURFACE REMOVAL (VARIABLE DEPTH)
	HOT-MIX ASPHALT SURFACE REMOVAL, 2.25"
	HOT-MIX ASPHALT SURFACE REMOVAL, 3.75"
	HOT-MIX ASPHALT SURFACE REMOVAL - BUTT JOINT
	PORTLAND CEMENT CONCRETE SURFACE REMOVAL - BUTT JOINT

RAISED REFLECTIVE PAVEMENT MARKER REMOVAL



PROPOSED LEGEND	
	HOT-MIX ASPHALT SURFACE COURSE, IL-9.5, MIX "D", N50; 1.5" TO 2.25"
	POLYMERIZED HOT-MIX ASPHALT BINDER COURSE, IL-4.75, N50, 1" (SEE PROPOSED TYPICAL SECTION FOR DETAILS OF VARIABLE SURFACE COURSE DEPTH)
	HOT-MIX ASPHALT SURFACE COURSE, IL-9.5, MIX "D", N50; 1.5"
	POLYMERIZED HOT-MIX ASPHALT BINDER COURSE, IL-4.75, N50, 0.75"
	HOT-MIX ASPHALT SURFACE COURSE, IL-9.5, MIX "D", N50 - 1.5"
	HOT-MIX ASPHALT BINDER COURSE, IL-19.0, N50 - 2.25"

CURB REMOVAL AND REPLACEMENT ADJACENT TO EXISTING ENTRANCES AS IDENTIFIED BY THE ENGINEER SHALL INCLUDE RESTORATION OF DRIVEWAY AT 4-FT WIDTH BEHIND THE CURBLINE: HOT-MIX ASPHALT SURFACE COURSE, IL-9.5, MIX "D", N50; 3" AGGREGATE BASE COURSE, TYPE B 6"



MODEL: Sheet
FILE NAME: C:\Jobs\596 - Addison Township IL83 West Frontage Road\CADD\Sheet06_Plan.dgn



DESIGNED -	TGB	REVISED -	
DRAWN -	KM	REVISED -	
CHECKED -	RTM	REVISED -	
DATE -	4/21/2025	REVISED -	

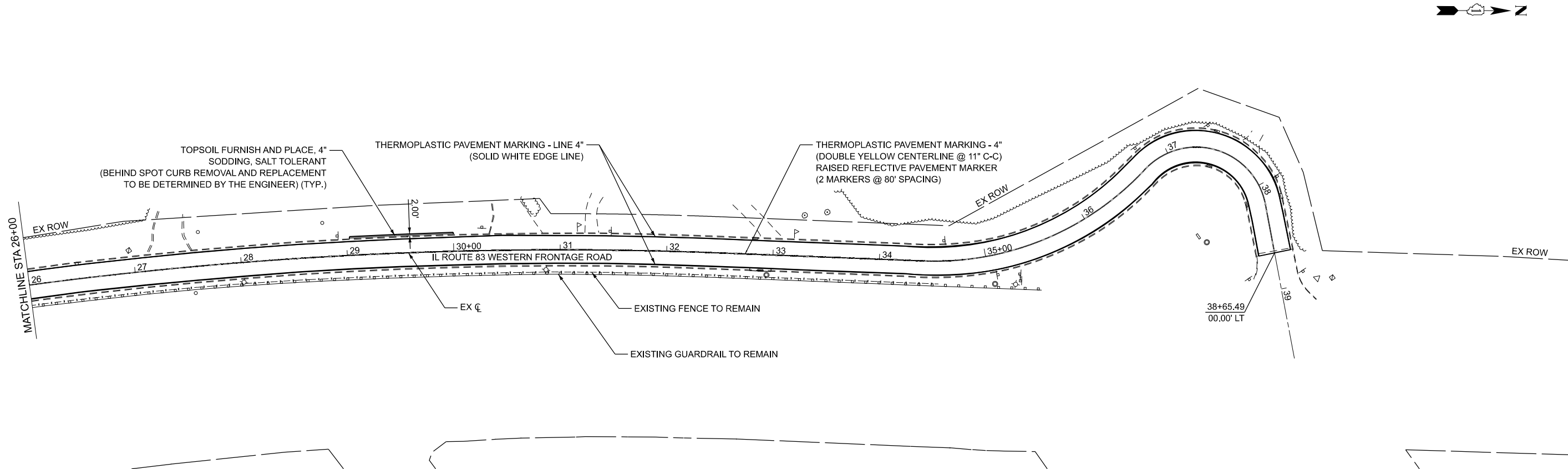
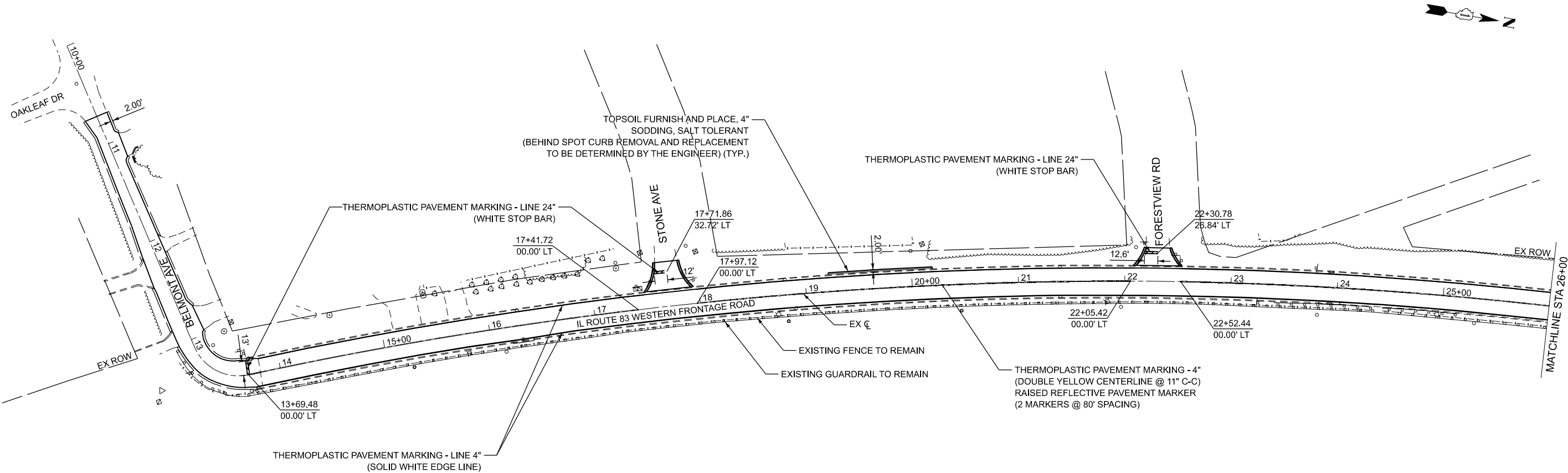
STATE OF ILLINOIS
DEPARTMENT OF TRANSPORTATION



ROADWAY PLAN

SHEET 6 OF 6 SHEETS STA. TO STA.

T.R.	SECTION	COUNTY	TOTAL SHEETS	SHEET NO.
3367	24-01121-00-PV	DUPAGE	21	14
CONTRACT NO. 61L45				
FED. ROAD DIST. NO. 1 ILLINOIS FED. AID PROJECT				

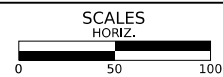


MODEL: Sheet
FILE NAME: C:\Users\596 - Addison\Township IL83 West Frontage Road\CAD\Sheet07_Erosion Control.dgn

Bravo Company
ENGINEERING

DESIGNED -	TGB	REVISED -	
DRAWN -	KM	REVISED -	
CHECKED -	RTM	REVISED -	
DATE -	4/21/2025	REVISED -	

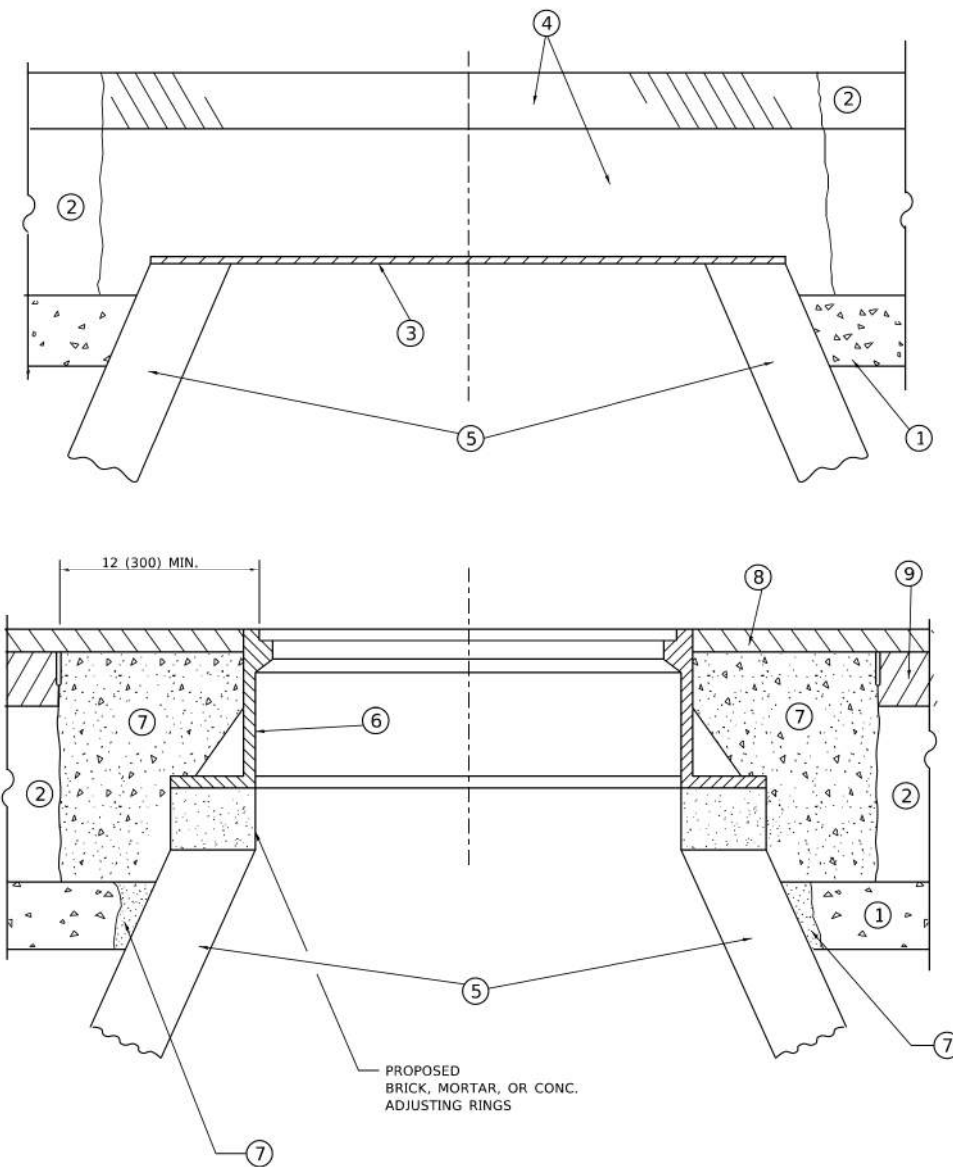
STATE OF ILLINOIS
DEPARTMENT OF TRANSPORTATION



**EROSION CONTROL, LANDSCAPING AND
PAVEMENT MARKINGS PLAN**

SHEET 1 OF 1 SHEETS STA. TO STA.

T.R.	SECTION	COUNTY	TOTAL SHEETS	SHEET NO.
3367	24-01121-00-PV	DUPAGE	21	15
CONTRACT NO. 61L45				
FED. ROAD DIST. NO. 1		ILLINOIS	FED. AID PROJECT	



**DETAILS FOR FRAMES AND LIDS ADJUSTMENT
WITH MILLING**

NOTES

1. EXISTING BROKEN FRAMES AND LIDS SHALL BE REMOVED AND DISPOSED OF BY THE CONTRACTOR AND SHALL BE REPLACED AS DIRECTED BY THE ENGINEER. REPLACEMENT FRAMES AND LIDS WILL BE PAID FOR IN ACCORDANCE WITH ARTICLE 109.04 OF THE STANDARD SPECIFICATIONS UNLESS A SEPARATE PAY ITEM HAS BEEN PROVIDED.
2. IF THE EXISTING LIDS ARE OPEN, THE FRAME WILL BE ADJUSTED TO THE ELEVATION OF THE MILLED PAVEMENT SURFACE PRIOR TO THE MILLING OPERATION. THE FRAME WILL NOT BE REMOVED AND COVERED BY THE METAL PLATE.
3. CITY OF CHICAGO CASTINGS ARE THE PROPERTY OF THE CITY AND THE CONTRACTOR SHALL NOTIFY THE CITY FOR REMOVAL AND DISPOSITION OF THE CASTINGS.
4. THE METAL PLATE USED TO COVER THE STRUCTURE SHALL REMAIN THE PROPERTY OF THE CONTRACTOR.
5. THE CONTRACTOR SHALL REMOVE ALL TRAFFIC CONTROL DEVICES BY THE END OF EACH WORK SHIFT.

CONSTRUCTION PROCEDURES

STAGE 1 (BEFORE PAVEMENT MILLING)

- A) REMOVE A MINIMUM OF 12 (300) OF THE PAVEMENT FROM AROUND THE STRUCTURE.
- B) REMOVE THE EXISTING FRAME AND LID FROM THE STRUCTURE.
- C) COVER THE STRUCTURE OPENING WITH A 36 (900) DIAMETER METAL PLATE.
- D) BACKFILL WITH CRUSHED STONE AND HMA SURFACE MIX APPROVED BY THE ENGINEER. (MIN. 3 (80) HMA TO REMAIN AFTER MILLING).

STAGE 2 (AFTER PAVEMENT MILLING)

- A) REMOVE THE HMA SURFACE MIX AND CRUSHED STONE.
- B) INSTALL THE FRAME AND LID; ADJUST THE FRAME TO ITS FINAL SURFACE ELEVATION.
- C) THE SURROUNDING SPACE SHALL BE FILLED WITH CLASS PP-2* CONCRETE TO THE ELEVATION OF THE SURFACE OF THE EXISTING BASE COURSE OR THE BINDER COURSE.

* UNLESS OTHERWISE SPECIFIED IN THE PLANS.

THE PROCEDURE EXPLAINED ABOVE SHALL CONFORM TO THE APPLICABLE PORTIONS OF SECTIONS 353, 406, 602, AND 603 OF THE STANDARD SPECIFICATIONS EXCEPT THAT "THE CONTRACTOR SHALL ADJUST THE STRUCTURES TO THE FINISHED PAVEMENT ELEVATION NO MORE THAN 5 CALENDAR DAYS PRIOR TO PLACEMENT OF THE FINAL LIFT OF SURFACE UNLESS APPROVED BY THE ENGINEER."

LEGEND

- | | |
|--|-------------------------------|
| ① SUB-BASE GRANULAR MATERIAL | ⑥ FRAME AND LID (SEE NOTES) |
| ② EXISTING PAVEMENT | ⑦ CLASS PP-2* CONCRETE |
| ③ 36 (900) DIAMETER METAL PLATE | ⑧ PROPOSED HMA SURFACE COURSE |
| ④ PROPOSED CRUSHED STONE AND HMA SURFACE MIX | ⑨ PROPOSED HMA BINDER COURSE |
| ⑤ EXISTING STRUCTURE | |

LOCATION OF STRUCTURES

THE CONTRACTOR WILL BE REQUIRED TO KEEP A RECORD OF THE LOCATIONS OF THE BURIED STRUCTURES ACCORDING TO THE STATION AND DISTANCE LEFT OR RIGHT OF THE CENTERLINE OF PAVEMENT. UPON COMPLETION OF THE WORK, THE CONTRACTOR WILL DELIVER THE RECORD TO THE ENGINEER.

BASIS OF PAYMENT

1. REMOVING FRAMES AND LIDS ON DRAINAGE AND UTILITY STRUCTURES IN THE PAVEMENT PRIOR TO MILLING, AND ADJUSTING TO FINAL GRADE PRIOR TO PLACING THE SURFACE COURSE, WILL BE PAID FOR AT THE CONTRACT UNIT PRICE EACH FOR "FRAMES AND LIDS TO BE ADJUSTED (SPECIAL)."
2. THIS WORK WILL NOT BE PAID FOR WHEN DRAINAGE AND UTILITY STRUCTURES ARE SPECIFIED FOR PAYMENT AS STRUCTURE RECONSTRUCTION.
3. NEW FRAMES AND LIDS, WHEN SPECIFIED, WILL BE PAID FOR SEPARATELY.
4. WHEN STRUCTURES ARE TO BE ADJUSTED OR RECONSTRUCTED, THE LOWERING AND RAISING OF THE FRAMES AND LIDS WILL NOT BE PAID FOR SEPARATELY BUT WILL BE INCLUDED IN THE COST OF THE CORRESPONDING PAY ITEM.

ALL DIMENSIONS ARE IN INCHES (MILLIMETERS) UNLESS OTHERWISE SHOWN

MODEL: Default
FILE: Model - FramesLids.dgn

USER NAME = Lawrence, DeManche	DESIGNED - R. SHAH	REVISED - R. BORO 03-09-11
	DRAWN -	REVISED - R. BORO 12-06-11
PLOT SCALE = 100.0000' / in.	CHECKED -	REVISED - K. SMITH 11-18-22
PLOT DATE = 9/15/2023	DATE - 10-25-94	REVISED - K. SMITH 09-15-23

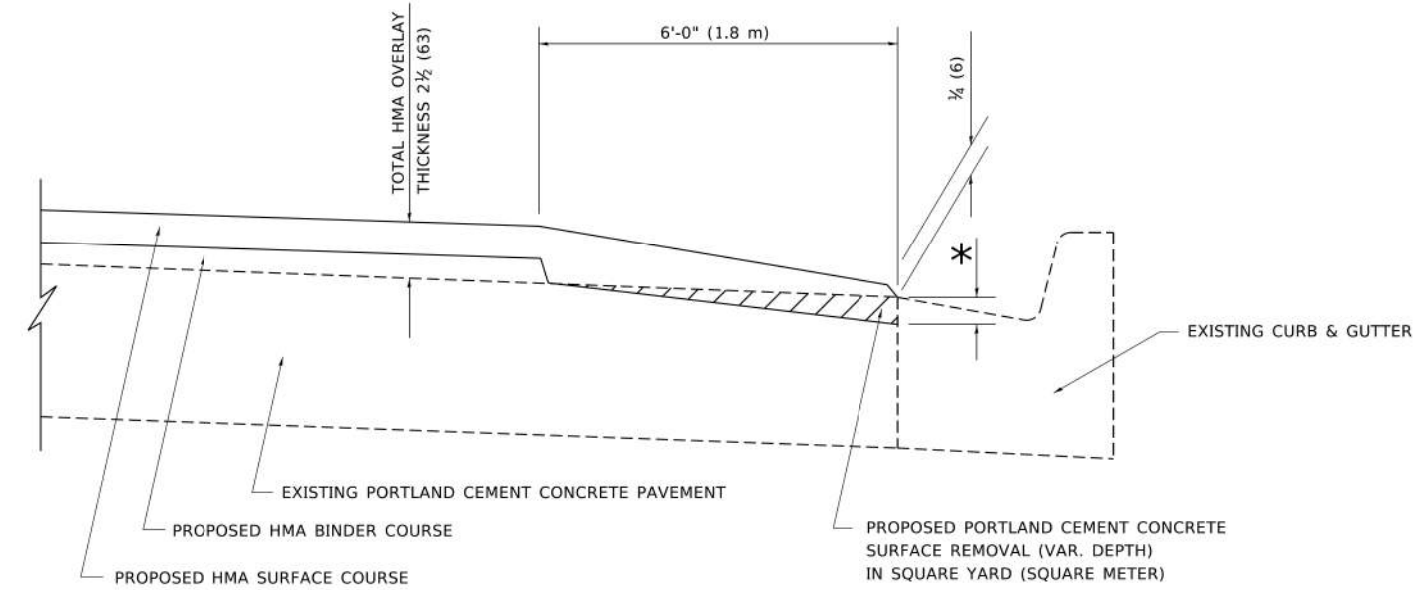
**STATE OF ILLINOIS
DEPARTMENT OF TRANSPORTATION**

**DETAILS FOR
FRAMES AND LIDS ADJUSTMENT WITH MILLING**

SCALE: NONE SHEET 1 OF 1 SHEETS STA. TO STA.

M.U.N.	SECTION	COUNTY	TOTAL SHEETS	SHEET NO.
3367	24-01121-00-PV	DUPAGE	21	16
BD600-03 (BD-08)		CONTRACT NO. 61L45		
ILLINOIS		FED. AID PROJECT		

MODEL Default
FILE Name: pav01102-rw-bentley.com-PWIDOT\Documents\DOT Offices\District 1\Projects\DH4542732\ACAD\Draws\CADD\Draws\dwg3.dgn



**HMA TAPER AT
EDGE OF P.C.C. PAVEMENT**

HMA SURFACE COURSE		HMA BINDER COURSE		* MILLING AT GUTTER FLAG
MIX	THICKNESS	THICKNESS		
D	1 1/2 (38)	1 (25)		1 1/4 (33)
E OR SMA 9.5	1 3/4 (44)	3/4 (19)		1 1/2 (38)

ALL DIMENSIONS ARE IN INCHES (MILLIMETERS) UNLESS
OTHERWISE SHOWN.

USER NAME	= Shawn.Ley	DESIGNED -	R. SHAH	REVISED -	E. GOMEZ 12-21-00
		DRAWN -	JIS	REVISED -	R. BORO 01-01-07
PLOT SCALE	= 50.0000 ' / ft.	CHECKED -	A. ABBAS	REVISED -	JP CHANG 07-08-16
PLOT DATE	= 1/23/2023	DATE -	09-10-94	REVISED -	K. SMITH 11-18-22

**STATE OF ILLINOIS
DEPARTMENT OF TRANSPORTATION**

**HMA TAPER AT
EDGE OF P.C.C. PAVEMENT**

SCALE: NONE SHEET 1 OF 1 SHEETS STA. TO STA.

M.U.N.	SECTION	COUNTY	TOTAL SHEETS	SHEET NO.
3367	24-01121-00-PV	DUPAGE	21	18
BD400-06		BD-33	CONTRACT NO. 61L45	
		ILLINOIS	FED. AID PROJECT	

MODEL: Default
FILE NAME: p:\u0048\BID\NTCE\Illinois\gov-PWD\DOT\Documents\DOT_Offices\Dir\rd 1\Projects\DUH5422\24\CADD\Drawn\CADSheet\10.dgn

10/24/2019 10:27:07 AM

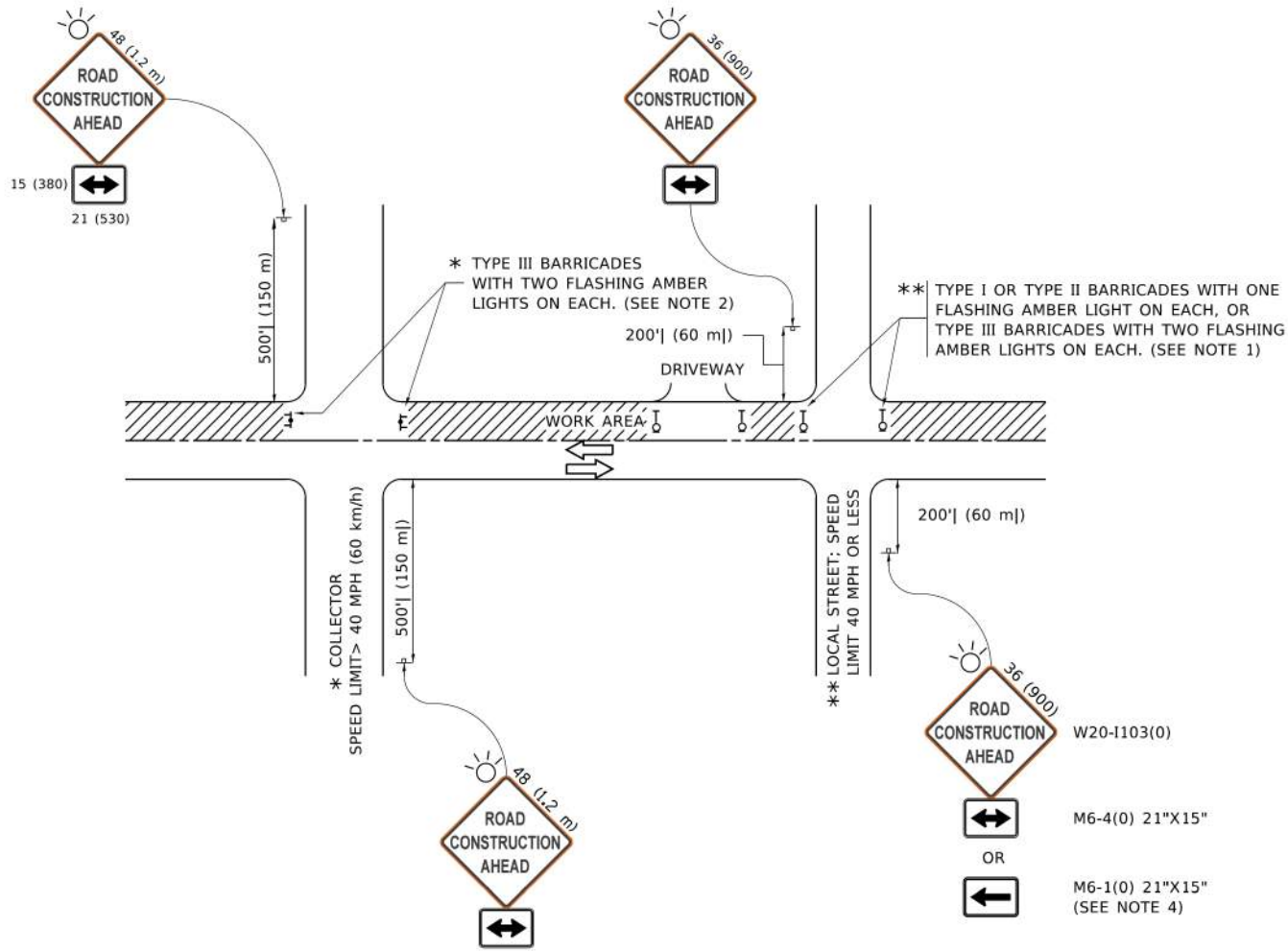
USER NAME	= footemj	DESIGNED	-	L.H.A.	REVISED	-	A. HOUSEH	10-15-96
		DRAWN	-		REVISED	-	T. RAMMACHER	01-06-00
PLOT SCALE	= 50.0000 ' / ft.	CHECKED	-		REVISED	-	A. SCHUETZE	07-01-13
PLOT DATE	= 3/4/2019	DATE	-	06-89	REVISED	-	A. SCHUETZE	09-15-16

STATE OF ILLINOIS
DEPARTMENT OF TRANSPORTATION

TRAFFIC CONTROL AND PROTECTION FOR
SIDE ROADS, INTERSECTIONS, AND DRIVEWAYS

SCALE: NONE SHEET 1 OF 1 SHEETS STA. TO STA.

All dimensions are in inches (millimeters)
unless otherwise shown.

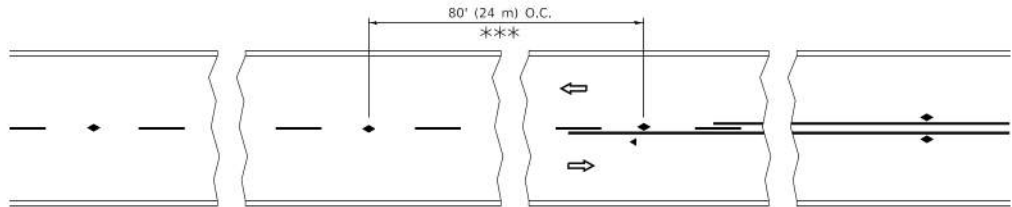


NOTES:

- SIDE ROAD WITH A SPEED LIMIT OF 40 MPH (60 km/h) OR LESS AS SHOWN ON THE DRAWING AND AS DIRECTED BY THE ENGINEER:
 - ONE "ROAD CONSTRUCTION AHEAD" SIGN 36 x 36 (900x900) WITH A FLASHER MOUNTED ON IT APPROXIMATELY 200' (60 m) IN ADVANCE OF THE MAIN ROUTE.
 - THE CLOSED PORTION OF THE MAIN ROUTE SHALL BE PROTECTED BY BLOCKING WITH TYPE I, TYPE II OR TYPE III BARRICADES, 1/3 OF THE CROSS SECTION OF THE CLOSED PORTION.
- SIDE ROAD WITH A SPEED LIMIT GREATER THAN 40 MPH (60 km/h) AS SHOWN ON THE DRAWING AND AS DIRECTED BY THE ENGINEER:
 - ONE "ROAD CONSTRUCTION AHEAD" SIGN 48 x 48 (1.2 m x 1.2 m) WITH A FLASHER MOUNTED ON IT APPROXIMATELY 500' (150 m) IN ADVANCE OF THE MAIN ROUTE.
 - THE CLOSED PORTION OF THE MAIN ROUTE SHALL BE PROTECTED BY BLOCKING WITH TYPE III BARRICADES, 1/2 OF THE CROSS SECTION OF THE CLOSED PORTION.
- CONES MAY BE SUBSTITUTED FOR BARRICADES OR DRUMS AT HALF THE SPACING DURING DAY OPERATIONS. CONES SHALL BE A MINIMUM OF 28 (710) IN HEIGHT.
- WHEN THE SIDE ROAD LIES BETWEEN THE BEGINNING OF THE MAINLINE
- SIGNING AND THE WORK ZONE, A SINGLE HEADED ARROW (M6-1) SHALL BE USED IN LIEU OF THE DOUBLE HEADED ARROW (M6-4).
- WHEN WORK IS BEING PERFORMED ON A SIDE ROAD OR DRIVEWAY, FOLLOW THE APPLICABLE STANDARD(S). THE DIRECTIONAL ARROW (M6-1 OR M6-4) SHALL BE COVERED OR REMOVED WHEN NO LONGER CONSISTENT WITH THE TRAFFIC CONTROL SET-UP.
- ADVANCE WARNING SIGNS ARE TO BE OMITTED ON DRIVEWAYS UNLESS OTHERWISE SPECIFIED IN THE PLANS OR BY THE ENGINEER.
- THE TRAFFIC CONTROL AND PROTECTION FOR SIDE ROADS, INTERSECTIONS, AND DRIVEWAYS SHALL BE INCLUDED IN THE COST OF SPECIFIED TRAFFIC CONTROL STANDARDS OR ITEMS.

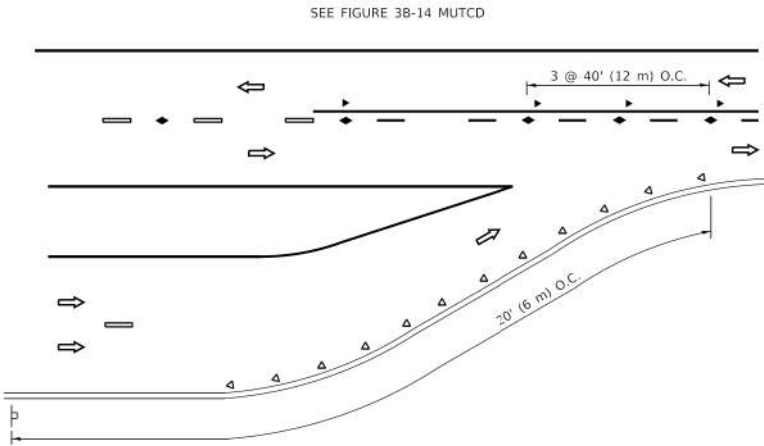
All dimensions are in inches (millimeters)
unless otherwise shown.

M.U.N.	SECTION	COUNTY	TOTAL SHEETS	SHEET NO.
3367	24-01121-00-PV	DUPAGE	21	19
TC-10		CONTRACT NO. 61L45		
ILLINOIS		FED. AID PROJECT		

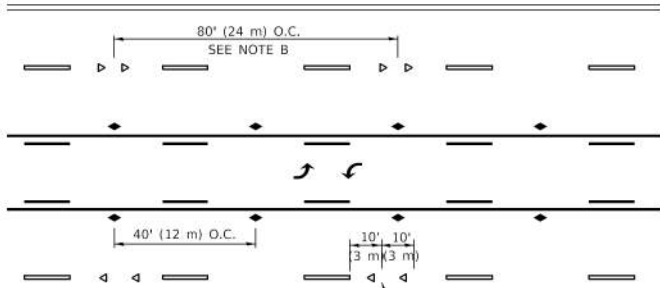


*** REDUCE TO 40' (12 m) O.C. ON CURVES WITH POSTED OR ADVISORY SPEED 45 M.P.H. (70 km/h) OR LESS.

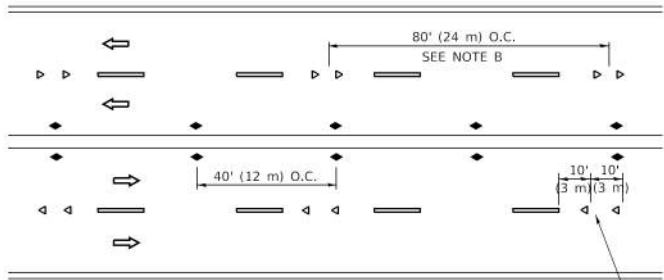
TWO-LANE/TWO-WAY



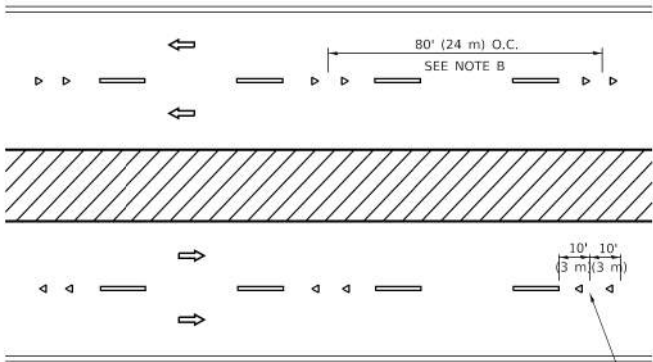
LANE REDUCTION TRANSITION



TWO-WAY LEFT TURN



MULTI-LANE/UNDIVIDED



MULTI-LANE/DIVIDED

GENERAL NOTES

1. MARKERS USED WITH DASHED LINES SHALL BE CENTERED IN THE GAP BETWEEN SEGMENTS.
2. MARKERS USED ADJACENT TO SOLID LINES SHALL BE OFFSET 2 TO 3 (50 TO 75) TOWARD TRAFFIC AS SHOWN.
3. MARKERS THROUGH TANGENTS LESS THAN 500' (150 m) IN LENGTH BETWEEN CURVES SHALL BE INSTALLED AT THE LESSER OF THE TWO CURVE SPACINGS.
4. MARKERS ARE TO BE USED ADJACENT TO BOTH SOLID WHITE LINES IN DUAL LEFT TURN LANES

LANE MARKER NOTES

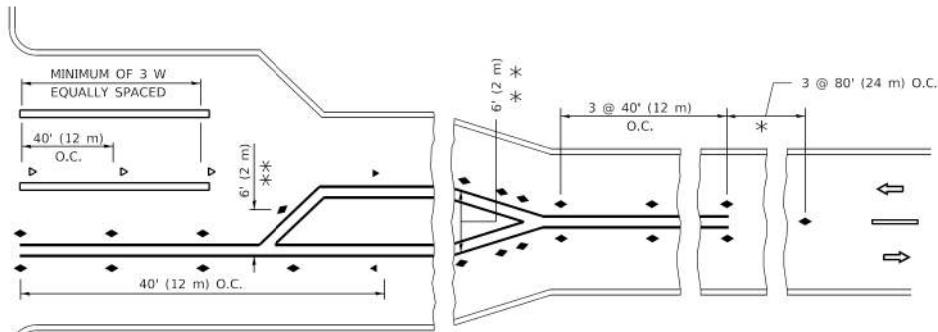
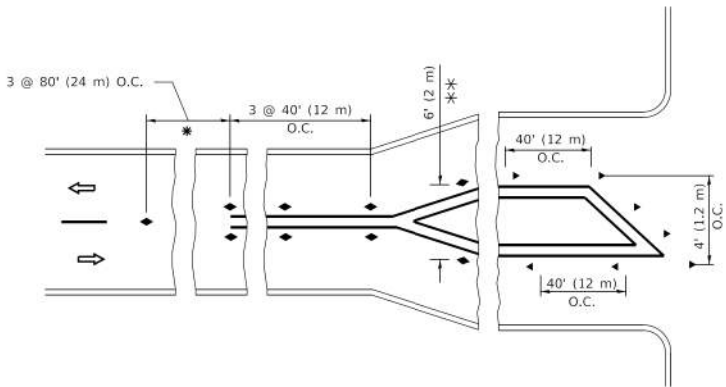
- A. USE DOUBLE LANE LINE MARKERS SPACED AS SHOWN.
- B. REDUCE TO 40' (12 m) O.C. ON CURVES WHERE ADVISORY SPEEDS ARE 10 M.P.H (20 km/h) LOWER THAN POSTED SPEEDS.

SYMBOLS

- YELLOW STRIPE
- WHITE STRIPE
- ONE-WAY AMBER MARKER
- ONE-WAY CRYSTAL MARKER (W/O)
- TWO-WAY AMBER MARKER

DESIGN NOTES

1. DOUBLE LANE LINE MARKERS SHALL BE USED UNLESS SPECIFIED OTHERWISE.
2. EXCEPT AS SHOWN ON THE LANE REDUCTION TRANSITION AND FREEWAY EXIT RAMP DETAIL, MARKERS ARE NOT TO BE SPECIFIED ON RIGHT EDGE LINES.
3. THE EXACT MARKER LIMITS, SPACING, AND COLOR SHALL BE INCLUDED IN THE PLANS WHEN STANDARD SPECIFICATIONS ARE NOT BEING USED.
4. MARKERS SHOULD NOT BE USED ALONGSIDE CURBS EXCEPT FOR EXTREMELY SHORT SECTIONS OF CURBS WHERE NOT MORE THAN TWO MARKERS WOULD BE INVOLVED.



* SEE TWO-LANE/TWO-WAY WHERE MARKERS CONTINUE
** WHERE THE MEDIAN WIDTH IS 6' (2 m) OR LESS USE TWO-WAY MARKERS.

TURN LANES

All dimensions are in inches (millimeters) unless otherwise shown.

STATE OF ILLINOIS
DEPARTMENT OF TRANSPORTATION

TYPICAL APPLICATIONS
RAISED REFLECTIVE PAVEMENT MARKERS (SNOW-PLOW RESISTANT)

M.U.N.	SECTION	COUNTY	TOTAL SHEETS	SHEET NO.
3367	24-01121-00-PV	DUPAGE	21	20
TC-11		CONTRACT NO. 61L45		
		ILLINOIS	FED. AID PROJECT	

SCALE: NONE SHEET 1 OF 1 SHEETS STA. TO STA.

