

STATE OF ILLINOIS
DEPARTMENT OF TRANSPORTATION

F.A.P. RTE.	SECTION	COUNTY	TOTAL SHEETS	SHEET NO.
311	2018-127-RS	DUPAGE	11	1
		ILLINOIS	CONTRACT NO. 62H61	

FOR INDEX OF SHEETS, SEE SHEET NO. 2

**PROJECT IS LOCATED IN:
THE CITY OF NAPERVILLE**

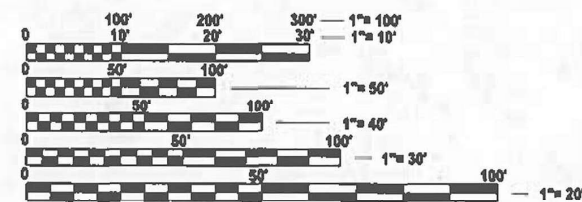
PROPOSED HIGHWAY PLANS

**FAP ROUTE 311: US 34 (OGDEN AVE)
28W731 OGDEN AVE, NAPERVILLE
NAPERVILLE MAINTENANCE YARD
SECTION: 2018-127-RS
PARKING IMPROVEMENT
DUPAGE COUNTY
C-91-271-19**

D-91-077-19

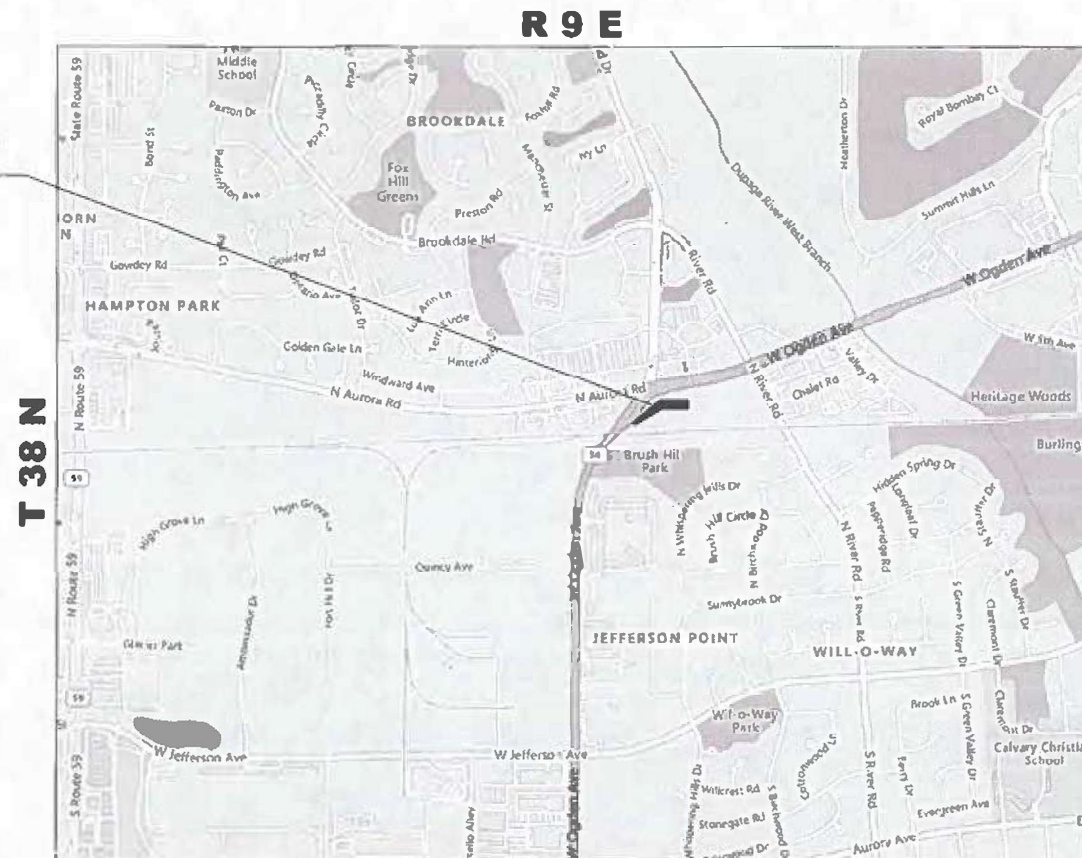


**IMPROVEMENT LOCATION:
28W731 OGDEN AVE, NAPERVILLE**



FULL SIZE PLANS HAVE BEEN PREPARED USING STANDARD ENGINEERING SCALES. REDUCED SIZED PLANS WILL NOT CONFORM TO STANDARD SCALES. IN MAKING MEASUREMENTS ON REDUCED PLANS, THE ABOVE SCALES MAY BE USED.

**J.U.L.I.E.
JOINT UTILITY LOCATION INFORMATION FOR EXCAVATION
1-800-892-0123
OR 811**



NAPERVILLE TOWNSHIP

GROSS & NET AREA OF MAINTENANCE YARD = 87,777 SQ FT = 9,753 SQ YD

**PROJECT ENGINEER: VESELIN VELICHKOV (847)705-4432
PROJECT MANAGER: VESELIN VELICHKOV**

CONTRACT NO. 62H61

**STATE OF ILLINOIS
DEPARTMENT OF TRANSPORTATION**

SUBMITTED May 12, 2025

REGIONAL ENGINEER

June 27, 2025

[Signature]
ENGINEER OF DESIGN AND ENVIRONMENT

June 27, 2025

[Signature]
DIRECTOR OF HIGHWAYS PROJECT IMPLEMENTATION

**PRINTED BY THE AUTHORITY
OF THE STATE OF ILLINOIS**

INDEX OF SHEETS

SHEET NO.

DESCRIPTION

1	TITLE SHEET
2	INDEX OF SHEETS, HIGHWAY STANDARDS AND GENERAL NOTES
3	SUMMARY OF QUANTITIES
4	EXISTING AND PROPOSED TYPICAL SECTIONS
5	EXISTING AND PROPOSED SITE PLAN
6	EXISTING AND PROPOSED SITE GRADING PLAN
7	BD-01: DRIVEWAY DETAILS - DISTANCE BETWEEN R.O.W. AND FACE OF CURB OR EDGE OF SHOULDER GREATER THAN OR EQUAL TO 15' (4.5 M)
8	BD-24: CURB OR CURB AND GUTTER REMOVAL AND REPLACEMENT
9	TC-10: TRAFFIC CONTROL AND PROTECTION FOR SIDEROADS, INTERSECTIONS, AND DRIVEWAYS
10	TC-13: DISTRICT ONE TYPICAL PAVEMENT MARKINGS
11	TC-22: ARTERIAL ROAD INFORMATION SIGN

STATE STANDARDS

STANDARD NO.

DESCRIPTION

000001-08	STANDARD SYMBOLS, ABBREVIATIONS AND PATTERNS
604001-05	FRAME AND LIDS TYPE 1
606001-08	CONCRETE CURB TYPE B AND COMBINATION CONCRETE CURB AND GUTTER
630001-12	STEEL PLATE BEAM GUARDRAIL
664001-02	CHAIN LINK FENCE
701006-05	OFF-RD OPERATIONS, 2L, 2W, 15' (4.5 m) TO 24" (600 mm) FROM PAVEMENT EDGE
701301-04	LANE CLOSURE, 2L, 2W, SHORT TIME OPERATIONS
701501-06	URBAN LANE CLOSURE, 2L, 2W, UNDIVIDED
701901-10	TRAFFIC CONTROL DEVICES

GENERAL NOTES

- 1) BEFORE STARTING ANY EXCAVATION, THE CONTRACTOR SHALL CALL "J.U.L.I.E." AT (800) 892-0123 OR 811 FOR FIELD LOCATIONS OF BURIED ELECTRIC, TELEPHONE AND GAS UTILITIES (48 HOUR NOTIFICATION IS REQUIRED)
- 2) THE CONTRACTOR SHALL COORDINATE CONSTRUCTION ACTIVITIES WITH THE NAPERVILLE MAINTENANCE YARD TECHNICIAN MIKE EURKAITIS AT 630-355-3958 OR 3959.
- 3) THE CONTRACTOR WILL NOT BE ALLOWED TO SET UP A YARD OR FIELD OFFICE ON STATE PROPERTY WITHOUT WRITTEN PERMISSION FROM THE DEPARTMENT.
- 4) DO NOT SCALE PLANS FOR CONSTRUCTION DIMENSIONS.
- 5) IT SHALL BE THE CONTRACTOR'S RESPONSIBILITY TO VERIFY ALL DIMENSIONS AND CONDITIONS EXISTING IN THE FIELD PRIOR TO CONSTRUCTION AND ORDERING OF MATERIALS.
- 6) THE CONTRACTOR SHALL BE REQUIRED TO PROVIDE ACCESS TO ABUTTING PROPERTY AT ALL TIMES DURING THE CONSTRUCTION OF THIS PROJECT.
- 7) EXISTING BROKEN FRAMES AND LIDS SHALL BE REMOVED AND DISPOSED OF BY THE CONTRACTOR AND SHALL BE REPLACED AS DIRECTED BY THE ENGINEER. REPLACEMENT FRAMES AND LIDS WILL BE PAID FOR ACCORDING TO ARTICLE 109.04 OF THE STANDARD SPECIFICATIONS UNLESS A SEPARATE PAY ITEM HAS BEEN PROVIDED.
- 8) THE CONTRACTOR SHALL CONTACT THE DISTRICT TRAFFIC CONTROL SUPERVISOR AT KALPANA.KANNAN-HOSADURGA@ILLINOIS.GOV A MINIMUM OF 72 HOURS IN ADVANCE OF BEGINNING WORK.

MODEL: GenNotesSh01 [Sheet]
FILE NAME: c:\pw\work\pwtolshtrans\bid1012032\D107719-sh1-genote.dgn

GENERAL NOTES CONTINUE ON NEXT SHEET													
	USER NAME	= Sarah.Shirani	DESIGNED	-	STATE OF ILLINOIS DEPARTMENT OF TRANSPORTATION	INDEX OF SHEETS, STATE STANDARDS & GENERAL NOTES NAPERVILLE MAINTENANCE YARD PARKING IMPROVEMENT			F.A.P RTE.	SECTION	COUNTY	TOTAL SHEETS	SHEET NO.
			DRAWN	-					311	2018-127-RS	DUPAGE	11	2
	PLOT SCALE	= \$SCALE\$	CHECKED	-					CONTRACT NO. 62H61				
	PLOT DATE	= 5/14/2025	DATE	-					ILLINOIS FED. AID PROJECT				
	SCALE:		SHEET	OF 1 SHEETS					STA.	TO STA.			

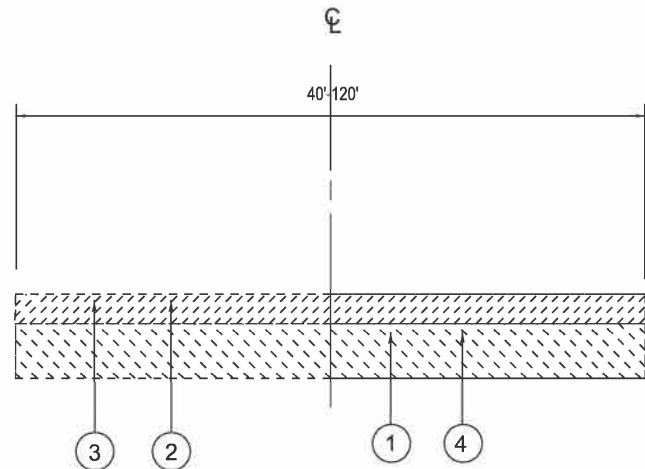
MODEL: SQ001 [Sheet]
FILE NAME: c:\pva\work\pavdoh\trans\bid1012032\DOT7719-eh1-SQG.dgn

*

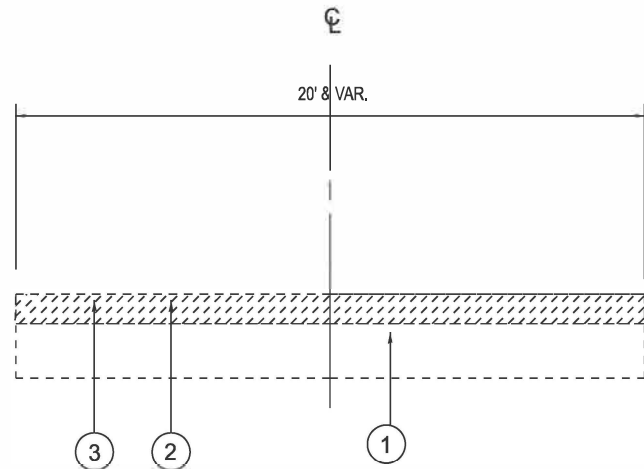
*

*

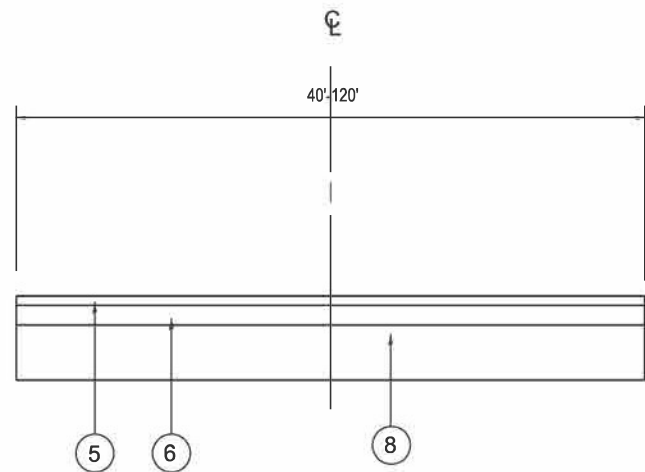
SUMMARY OF QUANTITIES			TOTAL QUANTITIES	CONSTRUCTION TYPE CODE						SUMMARY OF QUANTITIES			TOTAL QUANTITIES	CONSTRUCTION TYPE CODE										
CODE NO	ITEM	UNIT		100% STATE 0004						CODE NO	ITEM	UNIT		100% STATE 0004										
20200100	EARTH EXCAVATION	CU YD	2850	2850						*	66901003	REGULATED SUBSTANCES FINAL CONSTRUCTION REPORT	LSUM	1	1									
28000400	PERIMETER EROSION BARRIER	FOOT	2520	2520						*	66901006	REGULATED SUBSTANCES MONITORING	CAL DA	10	10									
28000510	INLET FILTERS	EACH	6	6							67100100	MOBILIZATION	L SUM	1	1									
31101400	SUBBASE GRANULAR MATERIAL, TYPE B 6"	SQ YD	8555	8555							72501000	TERMINAL MARKER - DIRECT APPLIED	EACH	2	2									
40600275	BITUMINOUS MATERIALS (PRIME COAT)	POUND	21945	21945						*	78000200	THERMOPLASTIC PAVEMENT MARKING - LINE 4"	FOOT	750	750									
40600290	BITUMINOUS MATERIALS (TACK COAT)	POUND	2195	2195							78200005	GUARDRAIL REFLECTORS, TYPE A	EACH	2	2									
40603085	HOT-MIX ASPHALT BINDER COURSE, IL-19.0, N70	TON	2007	2007							X4400501	COMBINATION CURB AND GUTTER REMOVAL AND	FOOT	50	50									
												REPLACEMENT LESS THAN OR EQUAL TO 10 FEET												
40604062	HOT-MIX ASPHALT SURFACE COURSE, IL-9.5, MIX "D", N70	TON	820	820																				
											X4400503	COMBINATION CURB AND GUTTER REMOVAL AND	FOOT	100	100									
44000100	PAVEMENT REMOVAL	SQ YD	9753	9753								REPLACEMENT LESS THAN OR EQUAL TO 10 FEET												
60250200	CATCH BASINS TO BE ADJUSTED	EACH	6	6							X5537800	STORM SEWERS TO BE CLEANED 12"	FOOT	100	100									
63100167	TRAFFIC BARRIER TERMINAL, TYPE 1 (SPECIAL) TANGENT	EACH	2	2							X6640300	CHAIN LINK FENCE REMOVAL	FOOT	250	250									
63200310	GUARDRAIL REMOVAL	FOOT	100	100							X6700407	ENGINEER'S FIELD OFFICE, TYPE A (D1)	CAL MO	6	6									
66400505	CHAIN LINK FENCE, 8'	FOOT	250	250							Z0013798	CONSTRUCTION LAYOUT	L SUM	1	1									
66900200	NON-SPECIAL WASTE DISPOSAL	CU YD	690	690							Z0018500	DRAINAGE STRUCTURES TO BE CLEANED	EACH	6	6									
66900530	SOIL DISPOSAL ANALYSIS	EACH	2	2							X7200061	TEMPORARY INFORMATION SIGNING	SQ FT	51.4	51.4									
66901001	REGULATED SUBSTANCES PRE-CONSTRUCTION PLAN	LSUM	1	1																*				
		USER NAME = Sarah.Shirani		DESIGNED -		REVISED -		STATE OF ILLINOIS DEPARTMENT OF TRANSPORTATION			SUMMARY OF QUANTITIES NAPERVILLE MAINTENANCE YARD PARKING IMPROVEMENT				F.A.P RTE.	SECTION		COUNTY	TOTAL SHEETS	SHEET NO.				
		DRAWN -		REVISED -		311	2018-127-RS								DUPAGE	11	3							
		PLOT SCALE = \$SCALES		CHECKED -		REVISED -					CONTRACT NO. 62H61													
		PLOT DATE = 5/15/2025		DATE -		REVISED -					SCALE:		SHEET	OF 1	SHEETS	STA.	TO STA.		ILLINOIS FED. AID PROJECT					
																					* SPECIALTY ITEMS			



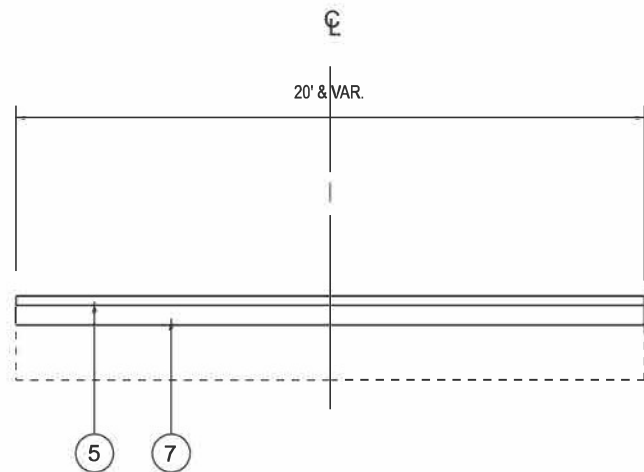
EXISTING TYPICAL SECTION
NAPERVILLE MAINTENANCE YARD



EXISTING TYPICAL SECTION
NAPERVILLE MAINTENANCE YARD ENTRANCE



PROPOSED TYPICAL SECTION
NAPERVILLE MAINTENANCE YARD



PROPOSED TYPICAL SECTION
NAPERVILLE MAINTENANCE YARD ENTRANCE

LEGEND

- ① EXISTING BASE GRAVEL/STONE
- ② EXISTING HOT-MIX ASPHALT SURFACE, 3.5"-5.25"
- ③ PROPOSED PAVEMENT REMOVAL
- ④ PROPOSED EARTH EXCAVATION
- ⑤ PROPOSED HMA SURFACE COURSE, IL 9.5, MIX "D", N70, 1.5"
- ⑥ PROPOSED HMA BINDER COURSE, IL-19.0, N70, 3"
- ⑦ PROPOSED HMA BINDER COURSE, IL-19.0, N70, 8.5"
- ⑧ PROPOSED SUBBASE GRANDULAR MATERIAL, TYPE B, 6"

NOTES:

1. LOCATIONS OF COMBINATION CONCRETE CURB AND GUTTER REMOVAL AND REPLACEMENT, WILL BE DETERMINED IN THE FIELD BY THE ENGINEER.

HMA MIXTURE REQUIREMENTS			
MIXTURE USES	MIXTURE TYPE	AIR VOIDS @ Ndes	QUALITY MANAGEMENT PROGRAM (QMP)
PAVEMENT RECON & RESURFACING	HMA SURFACE COURSE, MIX "D", IL-9.5, N70; 1.5" HMA BINDER COURSE, IL-19.0, N70, 3" & 8.5"	4% @ 70 GYR. 4% @ 70 GYR.	QC/QA QC/QA
QMP DESIGNATIONS: QUALITY CONTROL/QUALITY ASSURANCE (QC/QA) & QUALITY CONTROL FOR PERFORMANCE (QCP)			

NOTE #1: THE UNIT WEIGHT USED TO CALCULATE ALL HMA SURFACE MIXTURE QUANTITIES IS 112 LBS/SQ YD/IN.

NOTE #2: THE "AC TYPE" FOR POLYMERIZED HMA MIXES SHALL BE "SBS/SBR PG 76 -22" AND FOR NON-POLYMERIZED HMA THE "AC TYPE" SHALL BE "PG 64 -22" UNLESS MODIFIED BY RECLAIMED MATERIALS SPECIFICATIONS.

STATE OF ILLINOIS
DEPARTMENT OF TRANSPORTATION

EXISTING AND PROPOSED TYPICAL SECTIONS
NAPERVILLE MAINTENANCE YARD PARKING IMPROVEMENT

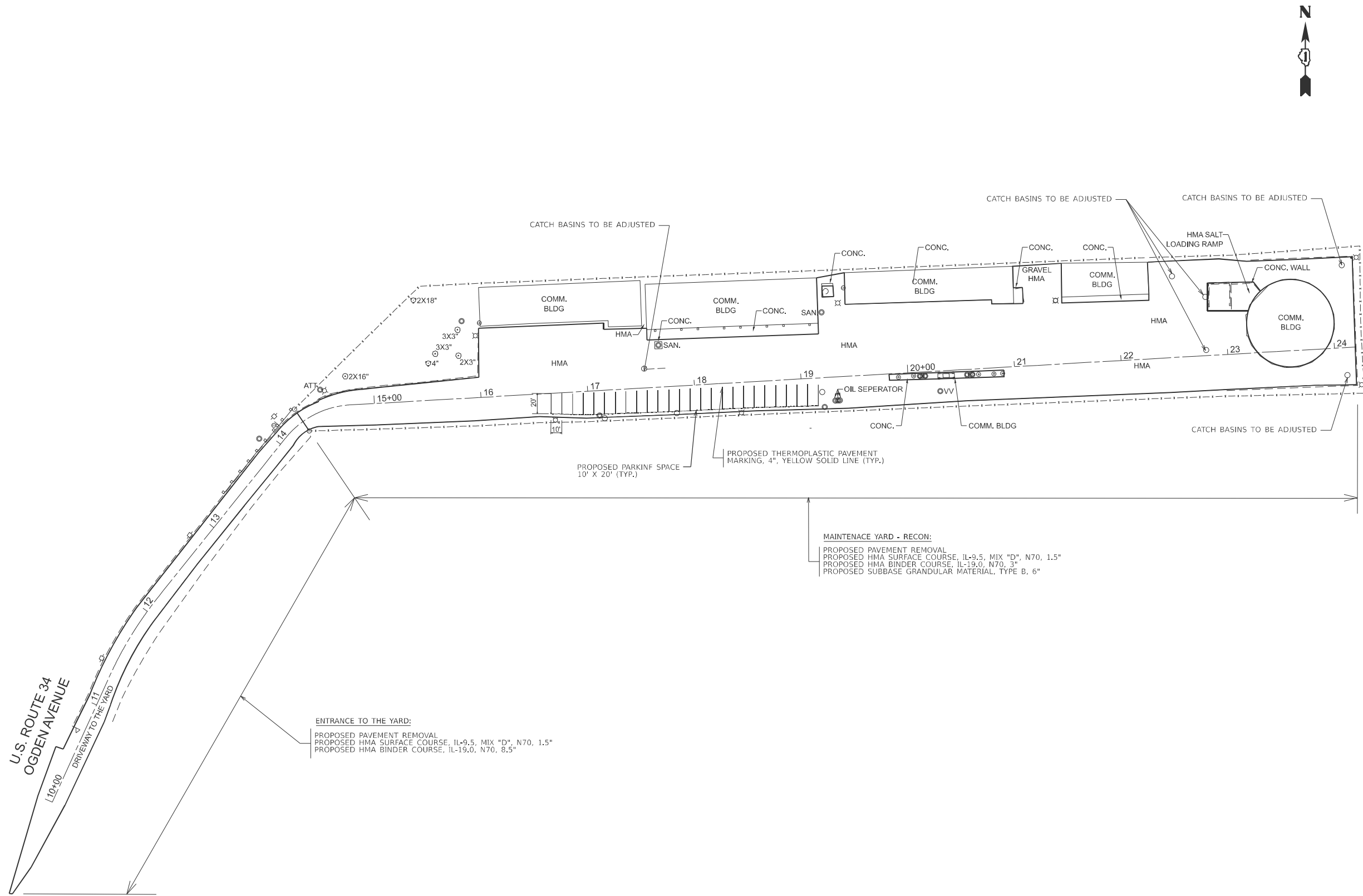
F.A.P RTE.	SECTION	COUNTY	TOTAL SHEETS	SHEET NO.
311	2018-127-RS	DUPAGE	11	4
CONTRACT NO. 62H61				
ILLINOIS FED. AID PROJECT				

MODEL: TwpSec01 [Sheet]
FILE NAME: c:\pwworking\tdshiransbd\1012032\0107719-ah-typical.dgn

USER NAME = Sarah.Shirani	DESIGNED -	REVISED -
	DRAWN -	REVISED -
	CHECKED -	REVISED -
PLOT DATE = 4/28/2025	DATE -	REVISED -

SCALE: SHEET OF 1 SHEETS STA. TO STA.

MODEL: Untitled [Sheet]
FILE NAME: c:\p\work\p\w\shirani\sd1012032\107719-shr-plan.dgn



MAINTENANCE YARD - RECON:
PROPOSED PAVEMENT REMOVAL
PROPOSED HMA SURFACE COURSE, IL-9.5, MIX "D", N70, 1.5"
PROPOSED HMA BINDER COURSE, IL-19.0, N70, 3"
PROPOSED SUBBASE GRANULAR MATERIAL, TYPE B, 6"

ENTRANCE TO THE YARD:
PROPOSED PAVEMENT REMOVAL
PROPOSED HMA SURFACE COURSE, IL-9.5, MIX "D", N70, 1.5"
PROPOSED HMA BINDER COURSE, IL-19.0, N70, 8.5"

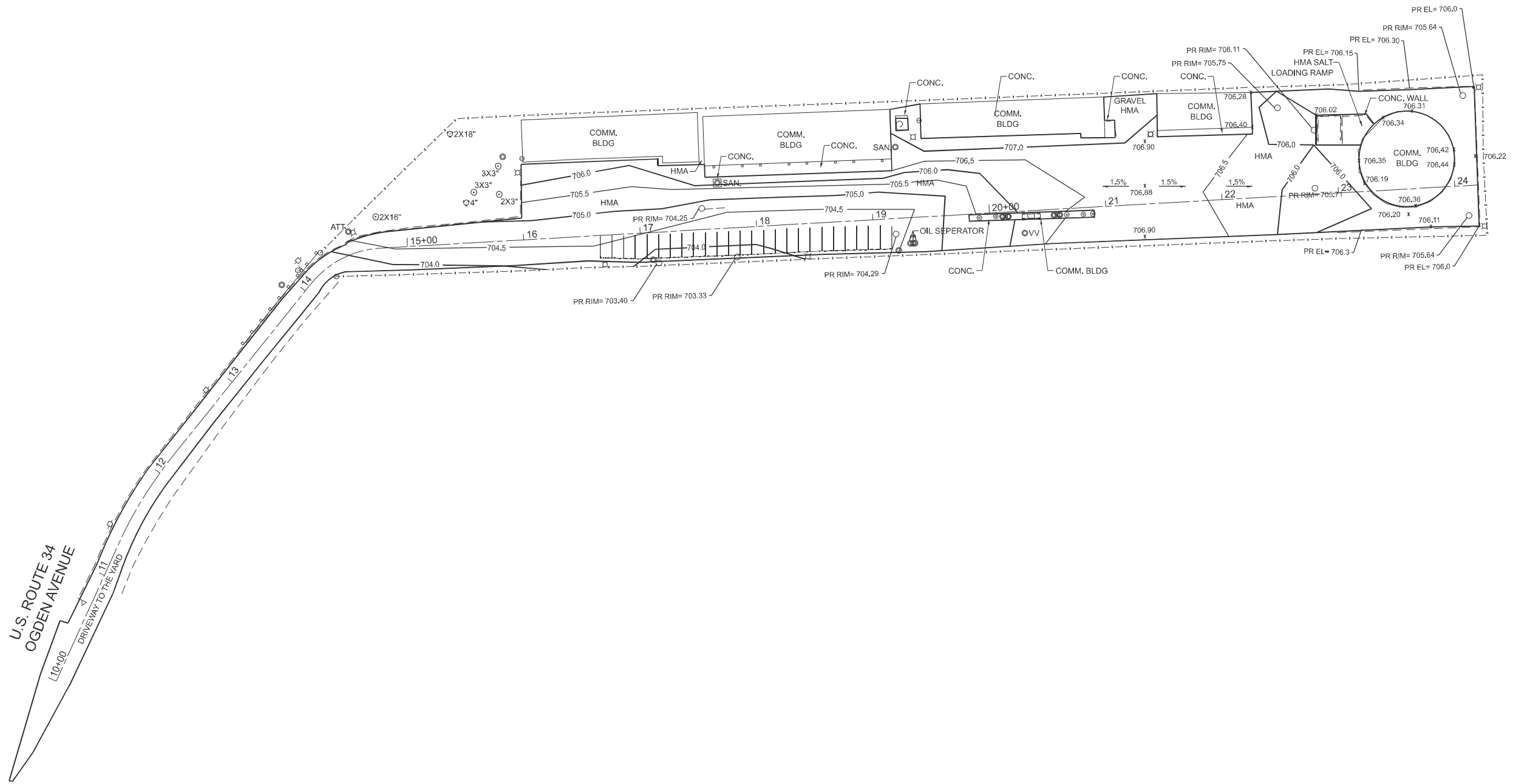
STATE OF ILLINOIS
DEPARTMENT OF TRANSPORTATION

EXISTING AND PROPOSED SITE PLAN
NAPERVILLE MAINTENANCE YARD PARKING IMPROVEMENT

SCALE: SHEET OF SHEETS STA. TO STA.

F.A.P RTE.	SECTION	COUNTY	TOTAL SHEETS	SHEET NO.
311	2018-127-RS	DUPAGE	11	5
CONTRACT NO. 62H61				
ILLINOIS FED. AID PROJECT				

MODEL: MAINT_YARD - Plan01 [Sheet]
FILE NAME: c:\p\work\pww\shirani\1012032\107719-shp-plan.dgn



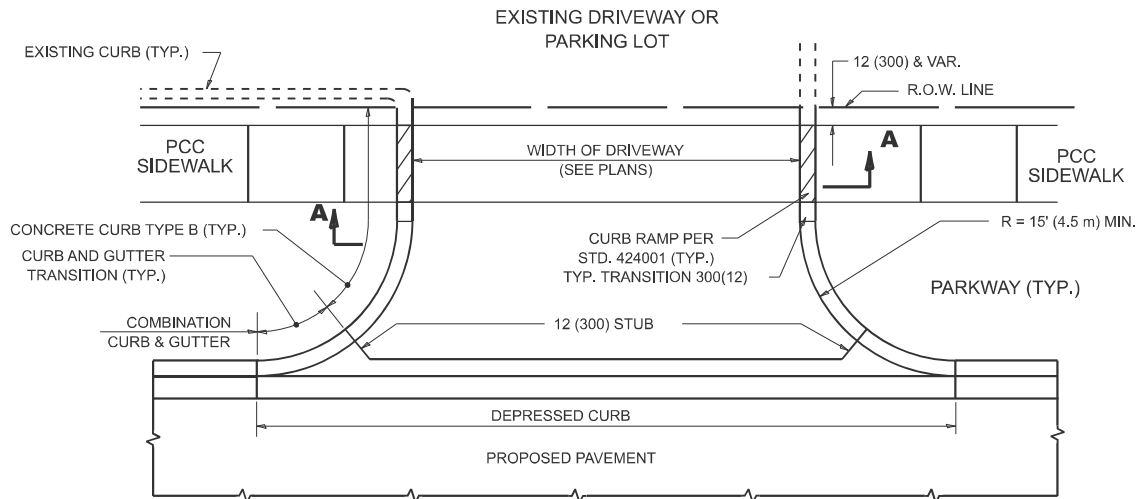
USER NAME	= Sarah,Shirani	DESIGNED	-	REVISED	-
		DRAWN	-	REVISED	-
		CHECKED	-	REVISED	-
PLOT DATE	= 5/14/2025	DATE	-	REVISED	-

STATE OF ILLINOIS	
DEPARTMENT OF TRANSPORTATION	

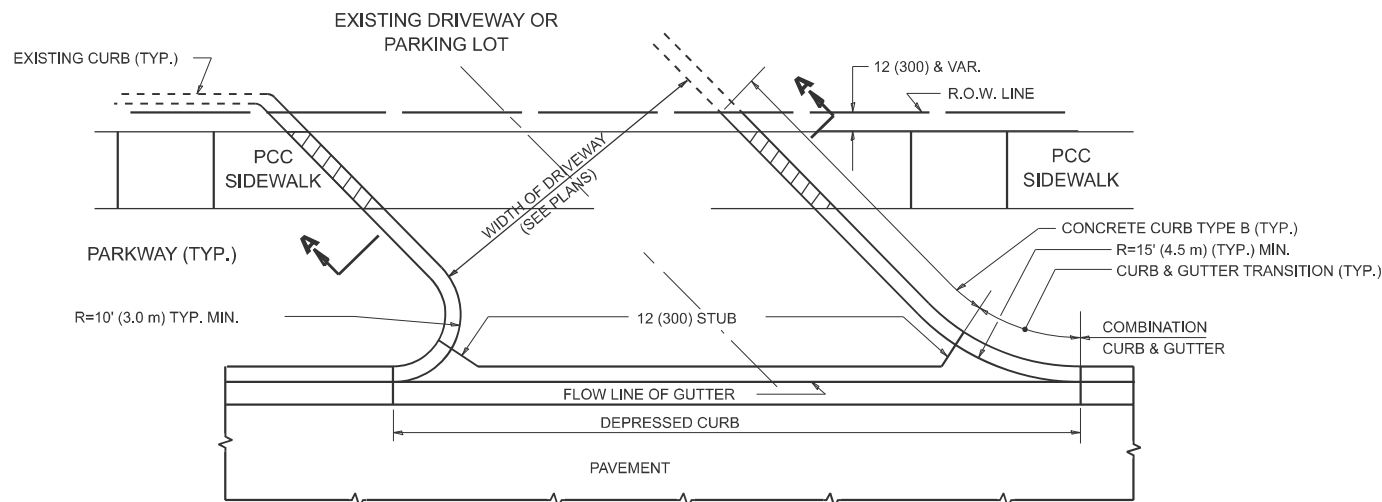
EXISTING AND PROPOSED SITE GRADING PLAN			
NAPERVILLE MAINTENANCE YARD PARKING IMPROVEMENT			
SCALE: 1"=50'	SHEET	OF 1	SHEETS
STA. 10+00.00	TO STA.	25+00.00	

F.A.P RTE.	SECTION	COUNTY	TOTAL SHEETS	SHEET NO.
311	2018-127-RS	DuPAGE	11	6
CONTRACT NO. 62H61				
ILLINOIS FED. AID PROJECT				

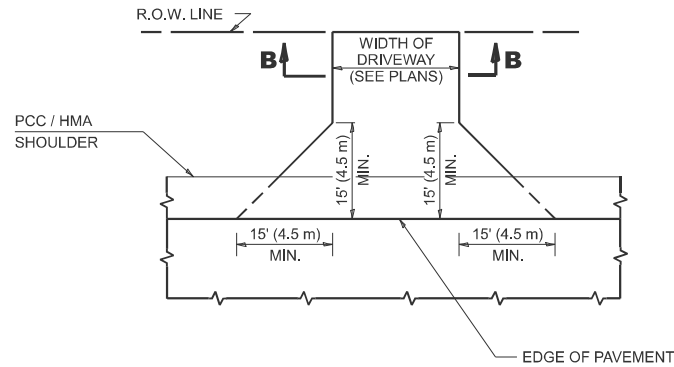
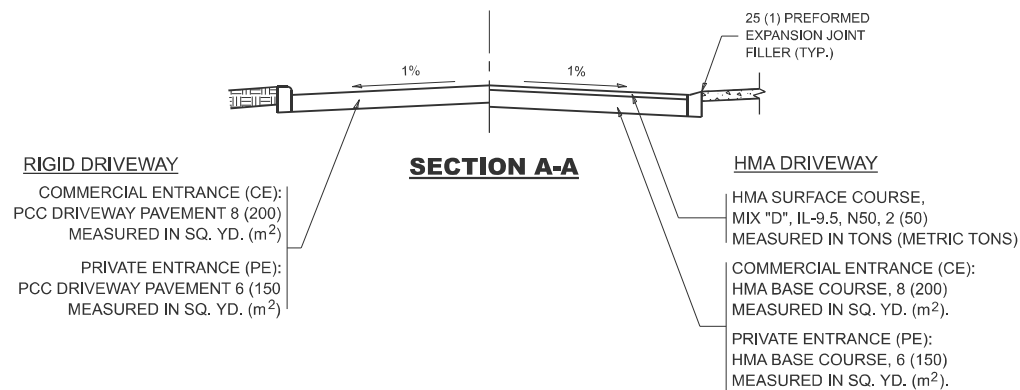
MODEL: Plan Single (Sheet)
FILE NAME: \\illinois.gov\DOT\Users\COTTHOMASELM\My Documents\Bentley\CONNECT1\012\Organization-Civil\DOT_Standards\Dgn\BSheet Seeds\Civil_Named_Boundary_SheetSeeds.dgn



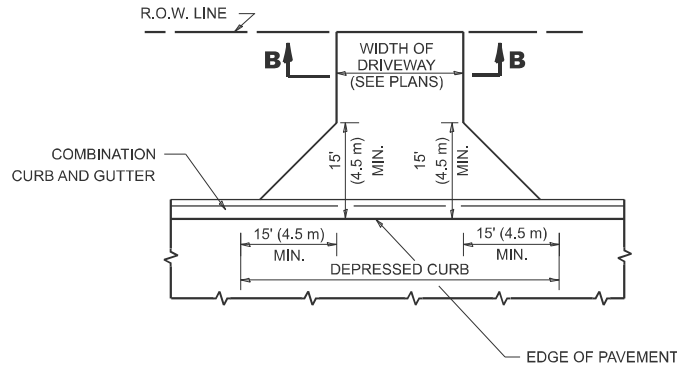
WITH CONCRETE CURB, TYPE B



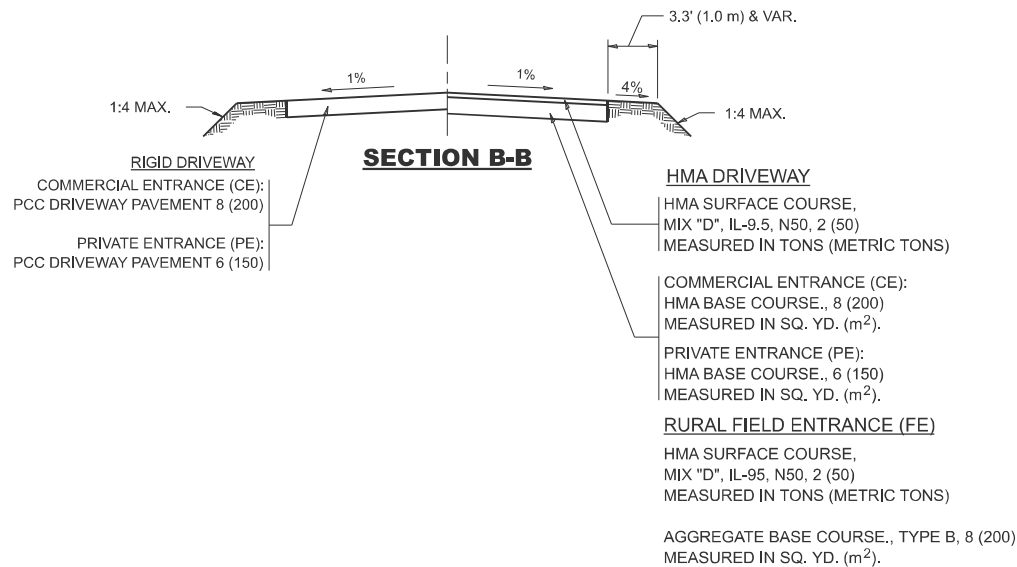
WITH CONCRETE CURB, TYPE B



ADJACENT TO PCC / HMA SHOULDER



ADJACENT TO CURB AND GUTTER



GENERAL NOTES

- DRIVEWAY SLOPES, LOCATIONS, & GEOMETRIC LAYOUT SHALL BE IN ACCORDANCE WITH THE LATEST EDITION OF THE "HANDBOOK FOR POLICY ON PERMITS FOR ACCESS DRIVEWAYS TO STATE HIGHWAYS". FOR FURTHER LAYOUT REQUIREMENTS, REFER TO ILLUSTRATIONS IN THE PERMIT HANDBOOK. DRIVEWAYS SHALL BE REPLACED IN KIND, UNLESS OTHERWISE NOTED ON THE PLANS.
- COMMERCIAL DRIVEWAYS SHALL BE CONSTRUCTED WITH CONCRETE CURB, TYPE B RETURNS EXCEPT WHEN THE SIDEWALK EDGE IS 4 FEET (1.2 METERS) OR LESS FROM THE BACK OF CURB, CONSTRUCT A FLARE DRIVEWAY WITHOUT CURB.

ALL DIMENSIONS ARE IN INCHES (MILLIMETERS)
UNLESS OTHERWISE NOTED.

USER NAME = Eric.L.Thomas	DESIGNED - R. SHAH	REVISED - R. BORO 06-11-08
	DRAWN -	REVISED - R. BORO 09-06-11
	CHECKED -	REVISED - K. SMITH 08-28-19
PLOT DATE = 8/20/2024	DATE - 11-04-95	REVISED - K. SMITH 11-18-22

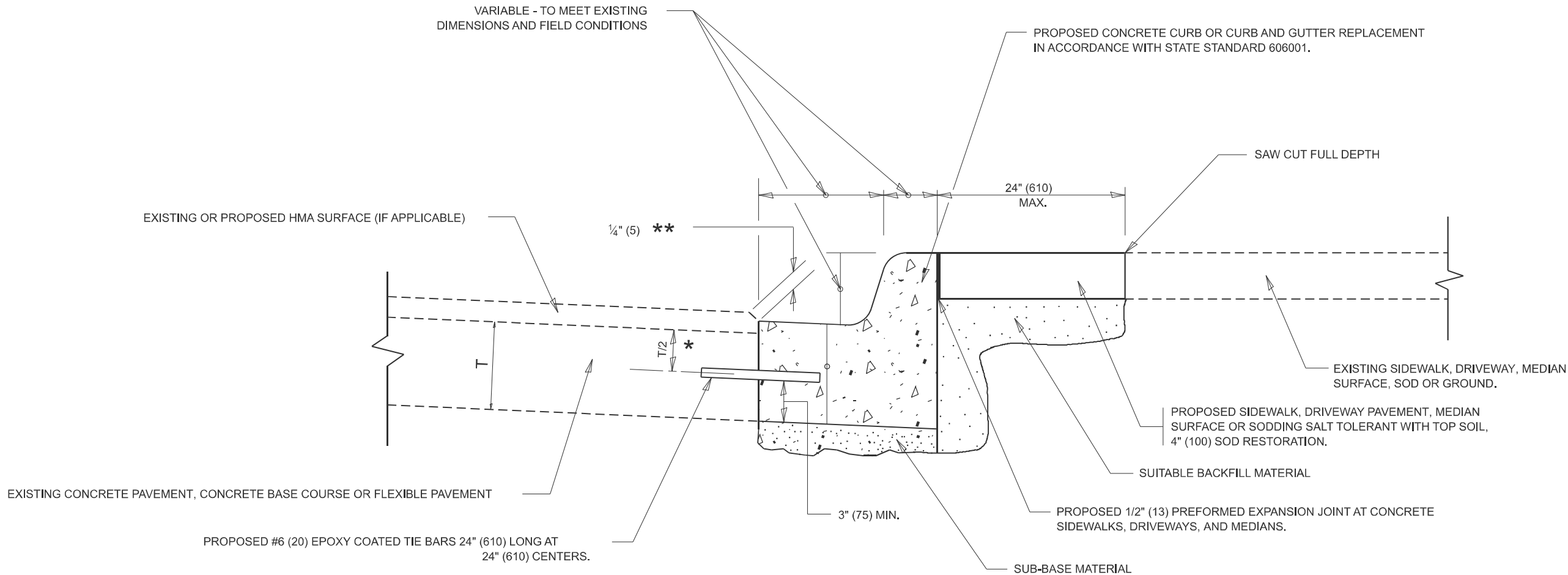
STATE OF ILLINOIS
DEPARTMENT OF TRANSPORTATION

DRIVEWAY DETAILS - DISTANCE BETWEEN R.O.W.
AND FACE OF CURB & EDGE OF SHOULDER >15'(4.5m)

SCALE: NONE SHEET 1 OF 1 SHEETS STA. TO STA.

F.A.P RTE.	SECTION	COUNTY	TOTAL SHEETS	SHEET NO.
311	2018-127-RS	DUPAGE	11	7
BD400-01 (BD-01)		CONTRACT NO. 62H61		
ILLINOIS		FED. AID PROJECT		

MODEL: Plan Single [Sheet]
FILE NAME: \\illinois.gov\DOT\Users\COTTHOMASELM\My Documents\Bentley\CONNECT1\012\Organization-Civil\DOT_Standards\Dgnlib\Sheet Seeds\Civil_Named_Boundary_SheetSeeds.dgnlib



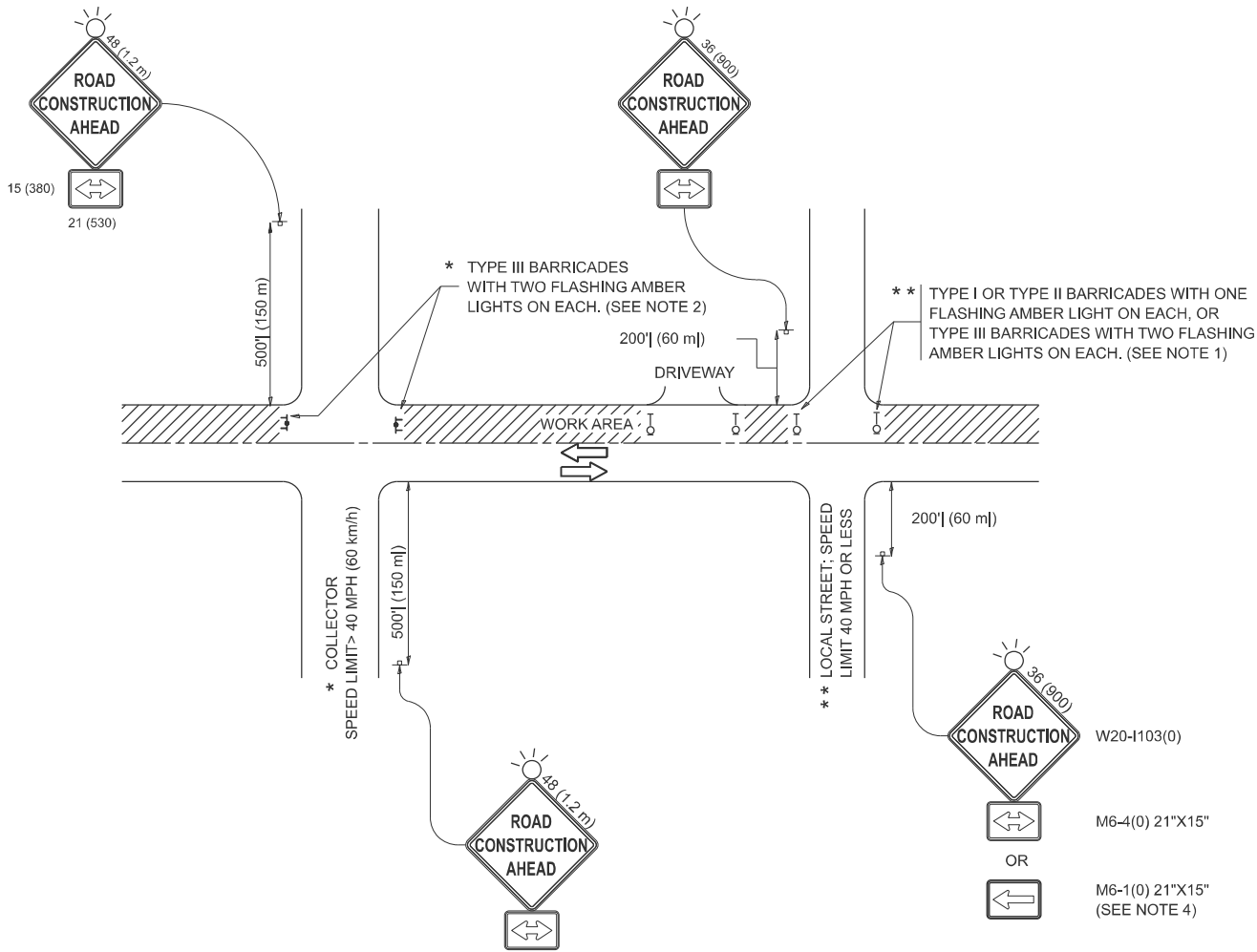
- * 3" (75) MINIMUM FROM TOP AND BOTTOM OF THE CONCRETE PAVEMENT OR BASE COURSE.
- ** IF THE FINAL SURFACE OF THE PAVEMENT IS CONCRETE, THE GUTTER IS TO BE FLUSH WITH THE PAVEMENT.

CURB OR CURB AND GUTTER REMOVAL AND REPLACEMENT

ALL DIMENSIONS ARE IN INCHES (MILLIMETERS)
UNLESS OTHERWISE SHOWN.

	USER NAME = Eric.L.Thomas	DESIGNED - A. HOUSEH	REVISED - A. ABBAS 03-21-97	STATE OF ILLINOIS DEPARTMENT OF TRANSPORTATION	CURB OR CURB AND GUTTER REMOVAL AND REPLACEMENT			F.A.P RTE.	SECTION	COUNTY	TOTAL SHEETS	SHEET NO.
		DRAWN -	REVISED - M. GOMEZ 01-22-01					311	2018-127-RS	DUPAGE	11	8
		CHECKED -	REVISED - R. BORO 12-15-09		BD600-06 (BD-24)			CONTRACT NO. 62H61				
	PLOT DATE = 8/20/2024	DATE - 03-11-94	REVISED - K. SMITH 07-11-19		SCALE: NONE	SHEET 1	OF 1 SHEETS	STA.	TO STA.	ILLINOIS	FED. AID PROJECT	

MODEL: Plan Single [Sheet]
FILE NAME: \\illinois.gov\DOT\Users\COTHOMASELM\Documents\Bentley\CONNECT1\012\Organization-Civil\DOT_Standards\Dgnlib\Sheet Seeds\Civil_Named_Boundary_SheetSeeds.dgnlib



NOTES:

1. SIDE ROAD WITH A SPEED LIMIT OF 40 MPH (60 km/h) OR LESS AS SHOWN ON THE DRAWING AND AS DIRECTED BY THE ENGINEER:

a) ONE "ROAD CONSTRUCTION AHEAD" SIGN 36 x 36 (900x900) WITH A FLASHER MOUNTED ON IT APPROXIMATELY 200' (60 m) IN ADVANCE OF THE MAIN ROUTE.

b) THE CLOSED PORTION OF THE MAIN ROUTE SHALL BE PROTECTED BY BLOCKING WITH TYPE I, TYPE II OR TYPE III BARRICADES, 1/3 OF THE CROSS SECTION OF THE CLOSED PORTION.
2. SIDE ROAD WITH A SPEED LIMIT GREATER THAN 40 MPH (60 km/h) AS SHOWN ON THE DRAWING AND AS DIRECTED BY THE ENGINEER:

a) ONE "ROAD CONSTRUCTION AHEAD" SIGN 48 x 48 (1.2 m x 1.2 m) WITH A FLASHER MOUNTED ON IT APPROXIMATELY 500' (150 m) IN ADVANCE OF THE MAIN ROUTE.

b) THE CLOSED PORTION OF THE MAIN ROUTE SHALL BE PROTECTED BY BLOCKING WITH TYPE III BARRICADES, 1/2 OF THE CROSS SECTION OF THE CLOSED PORTION.
3. CONES MAY BE SUBSTITUTED FOR BARRICADES OR DRUMS AT HALF THE SPACING DURING DAY OPERATIONS. CONES SHALL BE A MINIMUM OF 28 (710) IN HEIGHT.

4. WHEN THE SIDE ROAD LIES BETWEEN THE BEGINNING OF THE MAINLINE SIGNING AND THE WORK ZONE, A SINGLE HEADED ARROW (M6-1) SHALL BE USED IN LIEU OF THE DOUBLE HEADED ARROW (M6-4).
5. WHEN WORK IS BEING PERFORMED ON A SIDE ROAD OR DRIVEWAY, FOLLOW THE APPLICABLE STANDARD(S). THE DIRECTIONAL ARROW (M6-1 OR M6-4) SHALL BE COVERED OR REMOVED WHEN NO LONGER CONSISTENT WITH THE TRAFFIC CONTROL SET-UP.

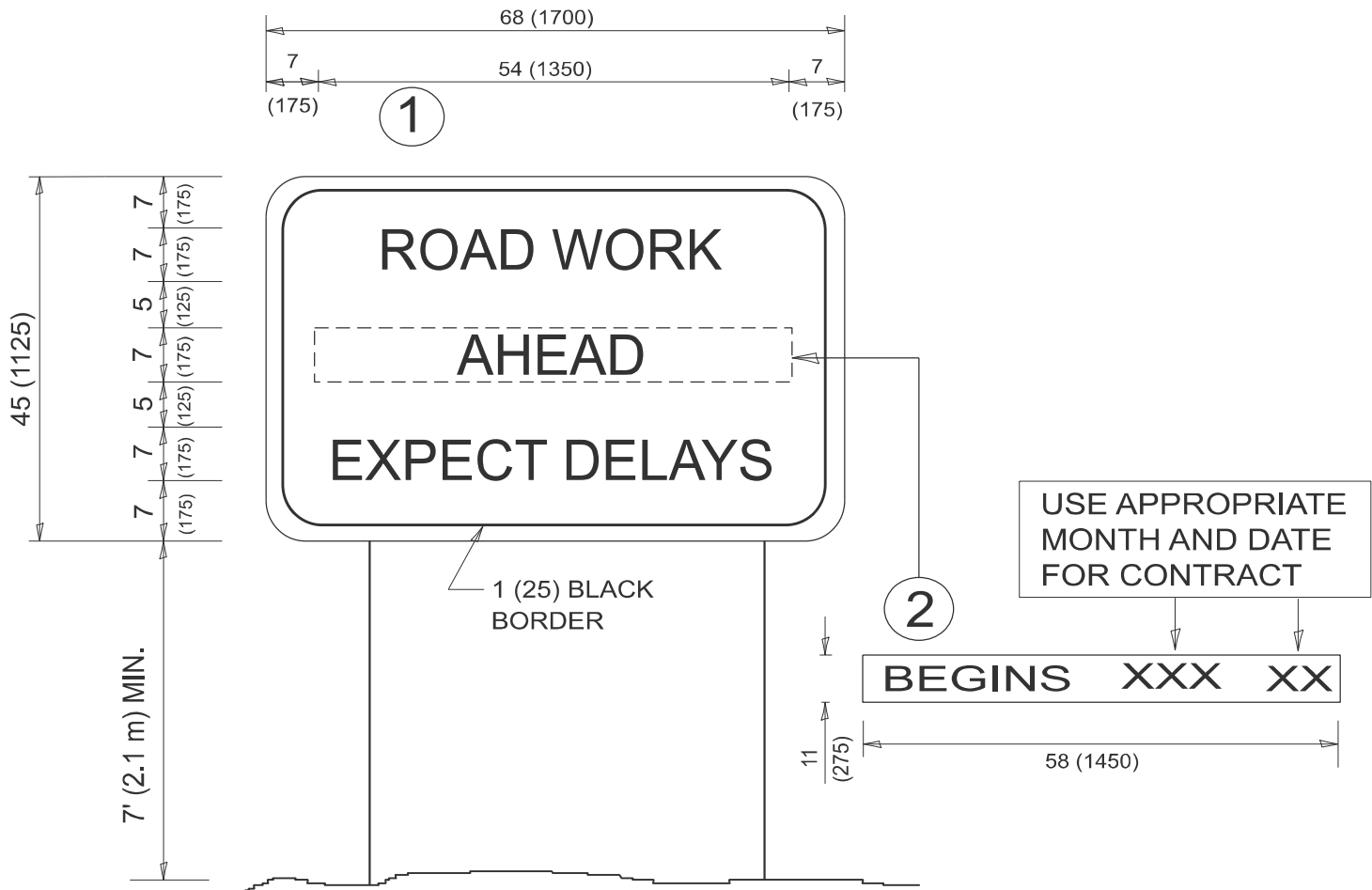
6. ADVANCE WARNING SIGNS ARE TO BE OMITTED ON DRIVEWAYS UNLESS OTHERWISE SPECIFIED IN THE PLANS OR BY THE ENGINEER.

7. THE TRAFFIC CONTROL AND PROTECTION FOR SIDE ROADS, INTERSECTIONS, AND DRIVEWAYS SHALL BE INCLUDED IN THE COST OF SPECIFIED TRAFFIC CONTROL STANDARDS OR ITEMS.

All dimensions are in inches (millimeters) unless otherwise shown.

	USER NAME	= Eric.L.Thomas	DESIGNED	-	L.H.A.	REVISED	-	T. RAMMACHER 01-06-00	STATE OF ILLINOIS DEPARTMENT OF TRANSPORTATION	TRAFFIC CONTROL AND PROTECTION FOR SIDE ROADS, INTERSECTIONS, AND DRIVEWAYS					F.A.P RTE.	SECTION	COUNTY	TOTAL SHEETS	SHEET NO.
			DRAWN	-		REVISED	-	A. SCHUETZE 07-01-13							311	2018-127-RS	DUPAGE	11	9
			CHECKED	-		REVISED	-	A. SCHUETZE 09-15-06		TC-10		CONTRACT NO. 62H61							
	PLOT DATE	= 8/20/2024	DATE	-	06-89	REVISED	-	D. SENDERAK 05-03-24		ILLINOIS FED. AID PROJECT									
SCALE:			SHEET			OF			SHEETS			STA.			TO STA.				

MODEL: Pln Srgle Sheet
FILE NAME: \\illinois.gov\DOT\Users\COTHOMASELM\Documents\Bentley\CONNECT1012\Organization-Civil\DOT_Standards\Dgnlib\Sheet Seeds\Civil_Named_Boundary_SheetSeeds.dgnlib



NOTES:

1. USE BLACK LETTERING ON ORANGE BACKGROUND.
2. ERECT SIGNS IN ADVANCE OF THE LOCATION FOR THE "ROAD CONSTRUCTION AHEAD" SIGN AT LOCATIONS AS DIRECTED BY THE ENGINEER.
3. ERECT SIGN ① WITH INSTALLED PANEL ② ONE WEEK PRIOR TO THE START OF CONSTRUCTION.
4. REMOVE PANEL ② SOON AFTER THE START OF CONSTRUCTION.
5. SEE SPECIAL PROVISION FOR "TEMPORARY INFORMATION SIGNING" FOR ADDITIONAL INFORMATION.
6. ONE SIGN ASSEMBLY EQUALS 25.70 SQ. FT. (2.3 SQ. M.)
7. SHALL BE PAID FOR AS TEMPORARY INFORMATION SIGNING.

ALL DIMENSIONS ARE IN INCHES (MILLIMETERS)
UNLESS OTHERWISE SHOWN.

	USER NAME = Eric.L.Thomas	DESIGNED -	REVISED - R. MIRS 09-15-97	STATE OF ILLINOIS DEPARTMENT OF TRANSPORTATION	ARTERIAL ROAD INFORMATION SIGN				F.A.P RTE.	SECTION	COUNTY	TOTAL SHEETS	SHEET NO.			
		DRAWN -	REVISED - R. MIRS 12-11-97						311	2018-127-RS	DUPAGE	11	11			
		CHECKED -	REVISED - T. RAMMACHER 02-02-99						TC-22					CONTRACT NO. 62H61		
	PLOT DATE = 8/20/2024	DATE -	REVISED - C. JUCIUS 01-31-07						ILLINOIS FED. AID PROJECT							
						SCALE: NONE	SHEET 1	OF 1	SHEETS	STA.	TO STA.					