

FOR INDEX OF SHEETS, SEE SHEET NO. 2

FOR LIST OF HIGHWAY STANDARDS, SEE SHEET NO. 2

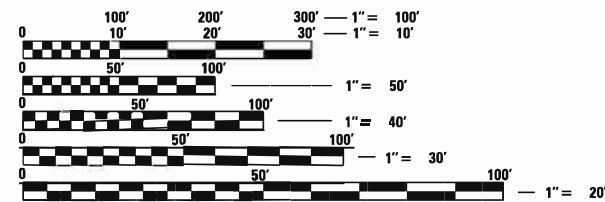
DESIGN DESIGNATION

65TH STREET – MAJOR COLLECTOR
OLD HARLEM – LOCAL ROAD

TRAFFIC DATA

	ADT 2023/2050	SPEED DESIGN/POSTED
65TH STREET	9,850 / 13,200	35 / 30
OLD HARLEM	175 / N/A	20 / 20

PROJECT IS LOCATED IN THE CITY OF CHICAGO



FULL SIZE PLANS HAVE BEEN PREPARED USING STANDARD
ENGINEERING SCALES. REDUCED SIZED PLANS WILL NOT
CONFORM TO STANDARD SCALES. IN MAKING MEASUREMENTS
ON REDUCED PLANS, THE ABOVE SCALES MAY BE USED.

DIGGER
CHICAGO UTILITY ALERT NETWORK
(312) 744-7000

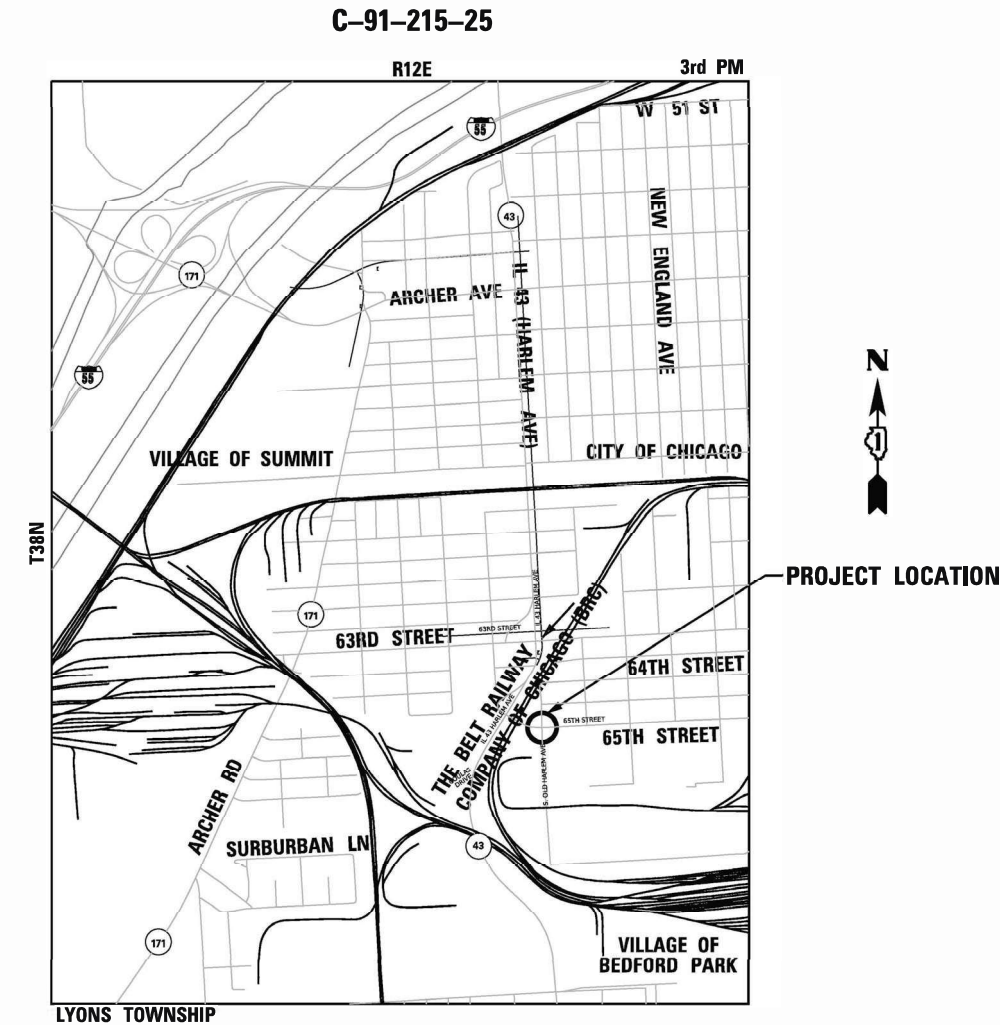
PROJECT MANAGER: MATTHEW ROTHENBERG,
P.E., (847) 705-4230
PROJECT ENGINEER: FIRAS UDDIN
(847) 705-4552
CONTRACT NO 62Y25



STATE OF ILLINOIS
DEPARTMENT OF TRANSPORTATION

PROPOSED
HIGHWAY PLANS

F.A.P. ROUTE 348: OLD HARLEM AVENUE
WEST 64TH PLACE TO 65TH STREET
SECTION NO: 2025-1071-DM
BUILDING DEMOLITION
COOK COUNTY



LOCATION MAP
NET LENGTH OF PROJECT = N/A – SPOT IMPROVEMENT
GROSS LENGTH OF PROJECT = N/A – SPOT IMPROVEMENT

PARSONS

F.A.P. RTE.	SECTION	COUNTY	TOTAL SHEETS	SHEET NO.
348	2025-1071-DM	COOK	12	1
		ILLINOIS	CONTRACT NO. 62Y25	

C-91-215-25



LOCATION OF SECTION INDICATED THUS: — ■ —

STATE OF ILLINOIS
DEPARTMENT OF TRANSPORTATION

SUBMITTED May 9th 2025 Ris IR

REGIONAL ENGINEER

June 27 2025 See E. H. Etk
ENGINEER OF DESIGN AND ENVIRONMENT

June 27 2025 Y. Uddin
DIRECTOR OF HIGHWAYS PROJECT IMPLEMENTATION

PRINTED BY THE AUTHORITY
OF THE STATE OF ILLINOIS

INDEX OF SHEETS

1	COVER SHEET
2	INDEX OF SHEETS/ HIGHWAY STANDARDS/ GENERAL NOTES
3 - 4	SUMMARY OF QUANTITIES
5	BUILDING DEMOLITION LOCATION MAP
6	BUILDING DEMOLITION PLANS
7	LANDSCAPING AND EROSION AND CONTROL PLANS
8-10	PLAT OF HIGHWAYS (FOR INFORMATION ONLY)
11	TRAFFIC CONTROL AND PROTECTION FOR SIDE ROADS, INTERSECTIONS AND DRIVEWAYS (TC-10)
12	ARTERIAL ROAD INFORAMTION SIGN (TC-22)

GENERAL NOTES:

1. SEVENTY-TWO (72) HOURS BEFORE STARTING EXCAVATION, THE CONTRACTOR SHALL CALL DIGGER (CHICAGO UTILITY ALERT NETWORK) AT (312) 744-7000 TO HAVE THE LOCATION OF EXISTING UNDERGROUND UTILITIES MARKED IN THE FIELD.
2. THE CONTRACTOR AND THE RESIDENT ENGINEER SHALL CONTACT MIKE CULLIAN OR CHRIS MUELLER AT (847) 705-4294 FROM THE BUREAU OF LAND ACQUISITION PRIOR TO CONSTRUCTION ACTIVITIES.
3. THE CONTRACTOR SHALL COORDINATE CONSTRUCTION ACTIVITIES WITH UTILITY COMPANIES IN THE CITY OF CHICAGO IL.
4. THE CONTRACTOR WILL NOT BE ALLOWED TO SET UP A YARD OR FIELD OFFICE ON STATE PROPERTY WITHOUT WRITTEN PERMISSION FROM THE DEPARTMENT.
5. IT SHALL BE THE CONTRACTOR'S RESPONSIBILITY TO VERIFY ALL DIMENSIONS AND CONDITIONS EXISTING IN THE FIELD PRIOR TO CONSTRUCTION AND ORDERING OF MATERIALS.
6. THE COTNTRACTOR IS RESPONSIBLE FOR OBTAINING A DEMOLITION PERMIT FROM THE VILLAGE OR CITY WHERE THE DEMOLITION WILL TAKE PLACE AND COMPLY WITH ALL CONDITIONS OF THE DEMOLITION PERMIT. COST INCLUDED IN THE COST OF BUILDING REMOVAL.
7. THE COTNTRACTOR MUST CONTACT THE APPROPRIATE VILLAGE OR CITY FOR CORRESPONDING UTILITY DISCONNECTION REQUIREMENTS.
8. DUST CONTROL FOR EACH SITE SHALL BE IN ACCORDANCE TO ARTICLE 107.36 OF THE STANDARD SPECIFICATIONS FOR ROAD AND BRIDGE CONSTRUCTION.
9. ALL EXCAVATED MATERIAL IS TO REMAIN ON-SITE UNLESS THE EXCAVATED SOILS ENVIRONMENTAL CONDITION DEEMS IT NECESSARY TO BE REMOVED FROM SITE.
10. THE CONTRACTOR SHALL SECURE ALL PERMITS SUCH AS DEMOLITION PERMITS AND PERMITS FOR DISCONNECTION OF UTILITIES PER ARTICLE 107.04 OF THE STANDARD SPECIFICATIONS FOR BRIDGE CONSTRUCTION. NO ADDITIONAL COMPENSATION SHALL BE PROVIDED FOR PROCUREMENT OF PERMITS.
11. THE CONTRACTOR SHALL BE RESPONSIBLE TO MAINTAIN THE ACCESS PATHS TO THE DEMOLITION AREAS AT ALL TIMES.
12. BACKFILL USED FOR ANY HOLES, SUCH AS FOUNDATIONS SHALL BE FILLED WITH POROUS GRANULAR EMBANKMENT AND SHALL BE INCLUDED IN THE UNIT PRICE FOR BUILDING REMOVAL.
13. THE CONTRACTOR SHALL CONTACT KALPANA KANNAN-HOSADURGA THE DISTRICT ONE TRAFFIC CONTROL SUPERVISOR AT KALPANA.KANNAN-HOSADURGA@ILLINOIS.GOV AT LEAST 72 HOURS IN ADVANCE OF BEGINNING WORK.
14. THE COST FOR REMOVAL OF SHRUBS, BUSHES, SAPLINGS, WEEDS, AND OTHER VEGETATION OR OBSTRUCTIONS ALONG THE FOUNDATIONS OF THE BUILDING IS INCLUDED IN THE BUILDING REMOVAL.
15. THE COST FOR REMOVAL OF ALL OTHER ITEMS ON THE PROPERTY SHALL BE INCLUDED IN THE COST OF BUILDING REMOVAL.

HIGHWAY STANDARDS

000001-08	STANDARD SYMBOLS, ABBREVIATIONS AND PATTERNS
280001-07	TEMPORARY EROSION CONTROL SYSTEMS
701001-02	OFF-RD OPERATIONS, 2L, 2W, MORE THAN 15' (4.5 M) AWAY
701006-05	OFF-RD OPERATIONS, 2L, 2W, 15' (4.5 M) TO 24" (600 MM) FROM PAVEMENT EDGE
701101-05	OFF-RD OPERATIONS, MULTILANE 15' (4.5 M) TO 24" (600 MM) FROM PAVEMENT EDGE
701106-02	OFF-RD OPERATIONS, MULTILANE MORE THAN 15' (4.5 M) AWAY
701301-04	LANE CLOSURE, 2L, 2W, SHORT TIME OPERATIONS
701501-06	URBAN LANE CLOSURE, 2L, 2W, UNDIVIDED
701601-09	URBAN LANE CLOSURE, MULTILANE, 1W OR 2W WITH NONTRAVERSABLE MEDIAN
701801-06	SIDEWALK, CORNER OR CROSSWALK CLOSURE
701901-10	TRAFFIC CONTROL DEVICES

LIST OF DISTRICT 1 STANDARD DRAWINGS

TC-10	TRAFFIC CONTROL AND PROTECTION FOR SIDE ROADS, INTERSECTIONS, AND DRIVEWAYS
TC-22	ARTERIAL ROAD INFORMATION SIGN

MODEL Default
FILE NAME: p:\c\VA\VA01\PM\NTD\Parsons.com\Illinois State\Documents\ILL-43 at 65\h4d - Design\CAD_CORD\Roadway\Sheets_Demo\0182P52_sht_inx_BD_02.dgn

<div><div><div>PARSONS</div><div>TRANSPORTATION GROUP</div><div>ENGINEERS & PLANNERS</div><div>221 SOUTH MICHIGAN PLAZA, SUITE 2600</div><div>CHICAGO, IL 60605</div><div>Telephone: 312.435.4000</div><div>Fax: 312.336.4018</div></div></div>	USER NAME = p007881G	DESIGNED - GB	REVISED -	STATE OF ILLINOIS DEPARTMENT OF TRANSPORTATION	BUILDING DEMOLITION INDEX OF SHEETS, STANDARDS, AND GENERAL NOTES	F.A.P RTE.	SECTION	COUNTY	TOTAL SHEETS	SHEET NO.
		DRAWN - GB	REVISED -			348	2025-1071-DM	COOK	12	02
	PLOT SCALE = 2,0000' / in.	CHECKED - LC	REVISED -			CONTRACT NO. 62Y25				
	PLOT DATE = 5/9/2025	DATE -	REVISED -			SCALE:	SHEET 02	OF 12	SHEETS	STA.
							ILLINOIS	FED. AID PROJECT		

Model: Default
File Name: p:\VAV\A017\W\T01_Parsons.com\Illinois StateDocument\11_43 at 651\46 - Design\CAD_CDD_Roadway\Sheet_Demo\102\F52.eht-500_BD_03.dgn

PARSONS

TRANSPORTATION GROUP
ENGINEERS & PLANNERS
121 SOUTH WILSONS PLAZA, SUITE 2400
CHICAGO, IL 60606
Telephone: 312.696-5100
Fax: 312.690-2016

USER NAME = p007881G	DESIGNED -	REVISED -
	DRAWN -	REVISED -
PLOT SCALE = 0.100' / in.	CHECKED -	REVISED -
PLOT DATE = 5/9/2025	DATE -	REVISED -

STATE OF ILLINOIS
DEPARTMENT OF TRANSPORTATION

BUILDING DEMOLITION – SUMMARY OF QUANTITIES

SCALE: SHEET 03 OF 12 SHEETS STA. TO STA.

F.A.P RTE.	SECTION	COUNTY	TOTAL SHEETS	SHEET NO.
348	2025-1071-DM	COOK	12	03
		CONTRACT NO. 62Y25		
		ILLINOIS FED. AID PROJECT		

SP	CODE NO.	ITEM	UNIT	TOTAL QUANTITY	CONSTR. CODE
					100% STATE
					ROADWAY
					0044
					URBAN
	21101615	TOPSOIL FURNISH AND PLACE, 4"	SQ YD	3600	3600
	25000115	SEEDING, CLASS 1B	ACRE	1	1
	25000400	NITROGEN FERTILIZER NUTRIENT	POUND	67	67
	25000500	PHOSPHORUS FERTILIZER NUTRIENT	POUND	67	67
	25000600	POTASSIUM FERTILIZER NUTRIENT	POUND	67	67
	25100135	MULCH, METHOD 4	ACRE	1	1
	28000250	TEMPORARY EROSION CONTROL SEEDING	POUND	74	74
	28000510	INLET FILTERS	EACH	6	6
	28001100	TEMPORARY EROSION CONTROL BLANKET	SQ YD	3600	3600
	44000200	DRIVEWAY PAVEMENT REMOVAL	SQ YD	52	52
	44000600	SIDEWALK REMOVAL	SQ FT	5602	5602
	67100100	MOBILIZATION	L SUM	1	1
	70102620	TRAFFIC CONTROL AND PROTECTION, STANDARD 701501	L SUM	1	1

Model: Default: prj\A\A\A\A01\W\W\T\T1\Parsons.com\Illinois\StateDocument\Ill_43 at 651146 - Design\CAD - ORP\Roadway\Shields - Demol\102F52-eh1-500 - BD_04.dgn
FILE NAME: prj\A\A\A\A01\W\W\T\T1\Parsons.com\Illinois\StateDocument\Ill_43 at 651146 - Design\CAD - ORP\Roadway\Shields - Demol\102F52-eh1-500 - BD_04.dgn

PARSONS

TRANSPORTATION GROUP

ENGINEERS & PLANNERS

121 SOUTH WILSONS PLAZA, SUITE 2400

CHICAGO, IL 60606

Telephone: 312.636-5100

Fax: 312.630-2016

USER NAME	= p007881G	DESIGNED	-	REVISED	-
		DRAWN	-	REVISED	-
PLOT SCALE	= 0.100" / in.	CHECKED	-	REVISED	-
PLOT DATE	= 5/9/2025	DATE	-	REVISED	-

STATE OF ILLINOIS

DEPARTMENT OF TRANSPORTATION

BUILDING DEMOLITION – SUMMARY OF QUANTITIES

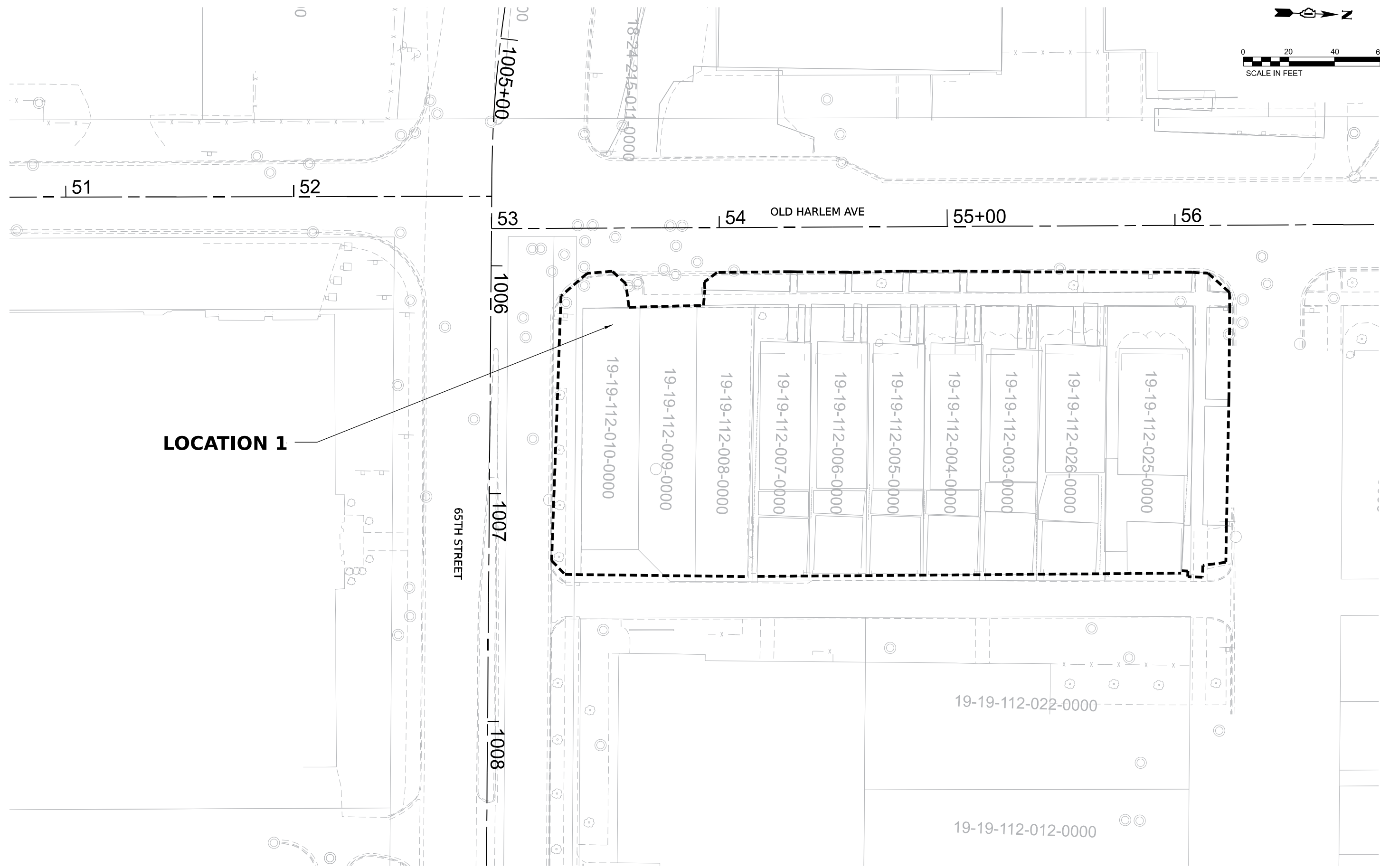
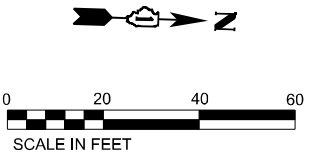
SCALE:

SHEET 04 OF 12 SHEETS

STA.

TO STA.

F.A.P RTE.	SECTION	COUNTY	TOTAL SHEETS	SHEET NO.
348	2025-1071-DM	COOK	12	04
		CONTRACT NO. 62Y25		
		ILLINOIS FED. AID PROJECT		



MODEL: D:\s14\1\01\PROJECT\1_Parsons\cont\Illinois State\Documents\Ill_43 at 65th St - Design\CAD_ORD\Roadway\Sheets_Demo\182552\demo-bc-bldg_BD_05.dgn
FILE NAME: p007881G



USER NAME	= p007881G	DESIGNED	-	REVISED	-
		DRAWN	-	REVISED	-
PLOT SCALE	= 40,0000''/in.	CHECKED	-	REVISED	-
PLOT DATE	= 5/9/2025	DATE	-	REVISED	-

STATE OF ILLINOIS
DEPARTMENT OF TRANSPORTATION

BUILDING DEMOLITION - IL 43 HARLEM AVENUE
BUILDING DEMOLITION LOCATION MAP

SCALE: 1" = 20' SHEET 5 OF 12 SHEETS STA. TO STA.

F.A.P. RTE.	SECTION	COUNTY	TOTAL SHEETS	SHEET NO.
348	2025-1071-DM	COOK	12	5
				CONTRACT NO. 62Y25
ILLINOIS FED. AID PROJECT				

MODEL: D:\a\1\p\1\N\1\T\1\Parsons.com\Road State\Documents\11_43 at 65th St - Design\CAD_CORD\Roadway\Sheets_Demo\112525\Self-Erosion_20sc_BD_07.dgn
FILE NAME: p:\a\1\p\1\N\1\T\1\Parsons.com\Road State\Documents\11_43 at 65th St - Design\CAD_CORD\Roadway\Sheets_Demo\112525\Self-Erosion_20sc_BD_07.dgn



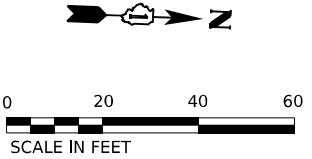
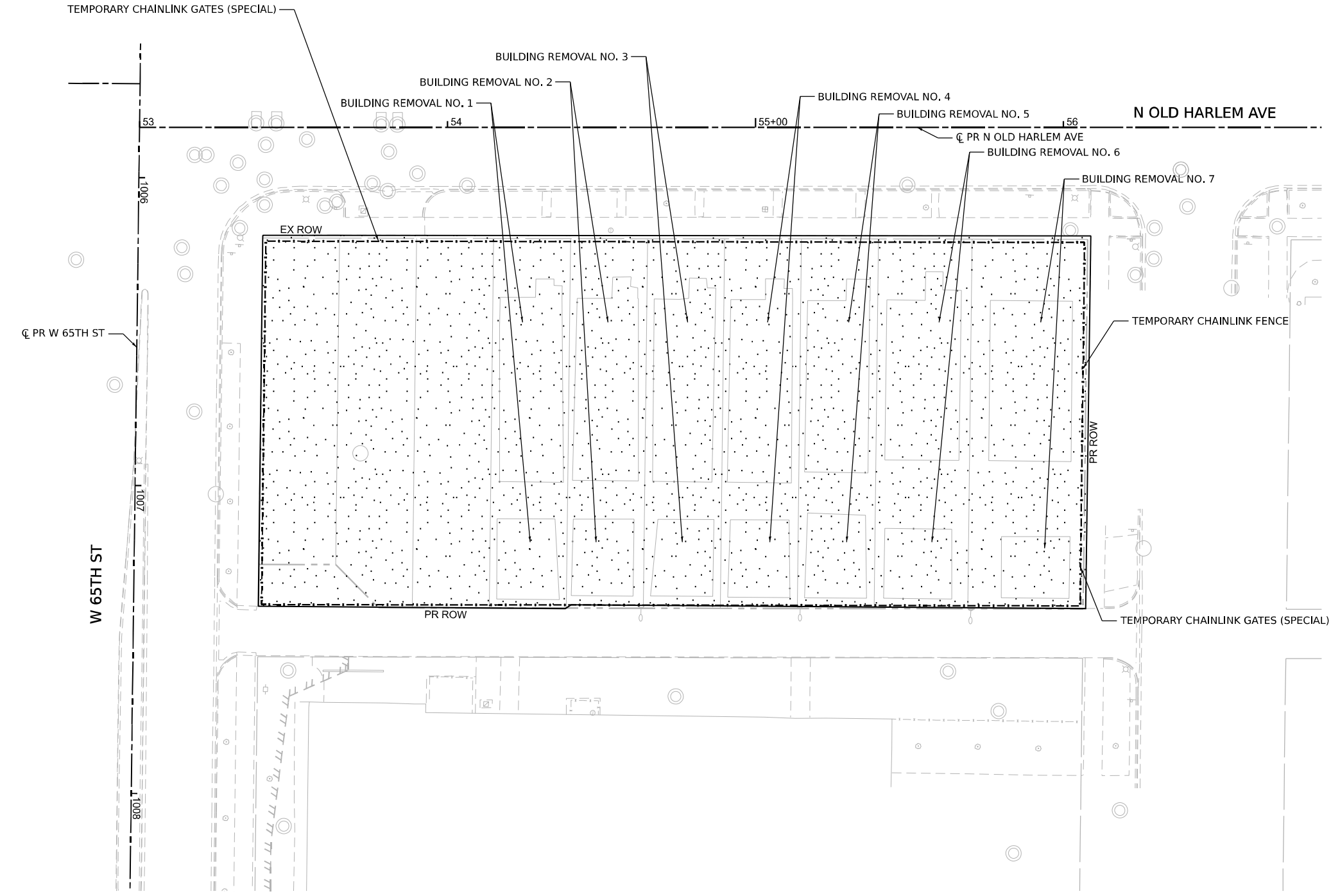
USER NAME	= p007881G	DESIGNED	- GB	REVISED	-
DRAWN	- GB	DRAWN	- GB	REVISED	-
PLOT SCALE	= 40,000' / 1 in.	CHECKED	- LC	REVISED	-
PLOT DATE	= 5/30/2025	DATE	- 6/5/2025	REVISED	-

STATE OF ILLINOIS
DEPARTMENT OF TRANSPORTATION

BUILDING DEMOLITION – IL 43 HARLEM AVENUE
EROSION AND LANDSCAPING – BUILDING DEMOLITION (LOCATION 1)

SCALE: 1" = 20' SHEET 7 OF 12 SHEETS STA. TO STA.

F&P RTE.	SECTION	COUNTY	TOTAL SHEETS	SHEET NO.
348	2025-1071-DM	COOK	12	7
CONTRACT NO. 62Y25				
ILLINOIS FED. AID PROJECT				



LEGEND

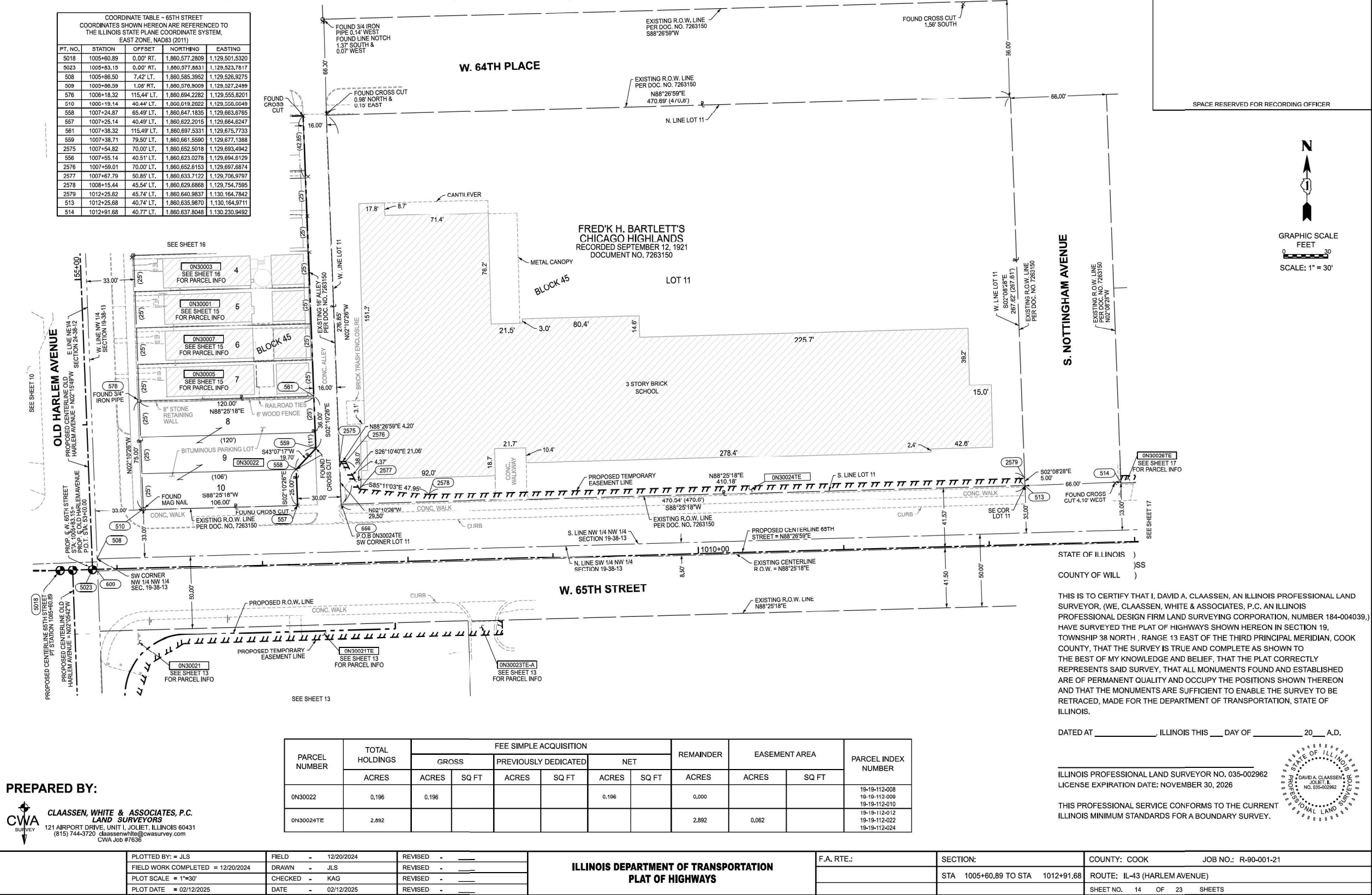
- PROP. TOPSOIL, FURNISH AND PLACE, 4"
- PROP. SEEDING, CLASS 1B
- PROP. MULCH, METHOD 4
- TEMPORARY CHAINLINK FENCE/GATE

NOTES

- 1) ALL EROSION CONTROL MEASURES SHALL BE IN ACCORDANCE WITH THE PROCEDURES AND STANDARDS FOR URBAN SOIL EROSION AND SEDIMENTATION CONTROL MANUAL
- 2) SOIL DISTURBANCE SHALL BE CONDUCTED IN SUCH A MANNER AS TO MINIMIZE EROSION. SOIL STABILIZATION MEASURES SHALL CONSIDER THE TIME OF YEAR, SITE CONDITIONS, AND THE USE OF TEMPORARY OR PERMANENT MEASURES.
- 3) SOIL EROSION AND SEDIMENTATION CONTROL FEATURES SHALL BE CONSTRUCTED PRIOR TO THE COMMENCEMENT OF UPLAND DISTURBANCE.
- 4) TEMPORARY SOIL STABILIZATION SHALL BE APPLIED TO DISTURBED AREAS WITHIN 14 CALENDAR DAYS OF THE END OF THE ACTIVE HYDRAULIC DISTURBANCE. PERMANENT STABILIZATION SHALL BE DONE WITHIN 14 DAYS AFTER COMPLETION OF THE FINAL GRADING OF THE SOIL.
- 5) ALL TEMPORARY EROSION AND SEDIMENT CONTROL MEASURES SHALL BE REMOVED WITHIN 30 DAYS AFTER FINAL STABILIZATION IS ACHIEVED OR AFTER TEMPORARY MEASURES ARE NO LONGER NEEDED. TRAPPED SEDIMENT AND OTHER DISTURBED SOIL AREAS SHALL BE PERMANENTLY STABILIZED.
- 6) ALL TEMPORARY AND PERMANENT EROSION CONTROL MEASURES MUST BE MAINTAINED AND REPAIRED AS NEEDED. THE GENERAL CONTRACTOR WILL BE RESPONSIBLE FOR INSPECTION AND REPAIR DURING CONSTRUCTION. THE OWNER WILL BE RESPONSIBLE IF EROSION CONTROL IS REQUIRED AFTER THE CONTRACTOR HAS COMPLETED THE PROJECT.
- 7) THE EROSION CONTROL MEASURES INDICATED ON THE PLANS ARE THE MINIMUM REQUIREMENTS. ADDITIONAL MEASURES MAY BE REQUIRED, AS DIRECTED BY THE RESIDENT ENGINEER.
- 8) TEMPORARY CHAINLINK GATES TO INCLUDE AFFIXED SIGNS WITH THE WORDS "STATE PROPERTY NO TRESPASSING" AND "UNDER VIDEO SURVEILLANCE"

PART OF THE NW 1/4 OF SECTION 19, TWP. 38 N., R. 13 E. OF THE 3RD. P.M., IN COOK COUNTY, ILLINOIS.

COORDINATE TABLE - 65TH STREET				
COORDINATES SHOWN HEREON ARE REFERENCED TO THE ILLINOIS STATE PLANE COORDINATE SYSTEM, EAST ZONE, NAD83 (2011)				
PT. NO.	STATION	OFFSET	NORTHING	EASTING
5018	1005+60.89	0.00' RT.	1,860,577.2809	1,129,501.5320
5023	1005+83.15	0.00' RT.	1,860,577.8631	1,129,523.7617
508	1005+86.50	7.42' LT.	1,860,585.3952	1,129,526.9275
509	1005+86.59	1.08' RT.	1,860,576.9009	1,129,527.2498
576	1006+18.32	115.44' LT.	1,860,694.2282	1,129,555.8201
510	1006+19.14	40.44' LT.	1,060,019.2022	1,129,556.0649
558	1007+24.87	65.49' LT.	1,860,647.1835	1,129,663.6765
557	1007+25.14	40.49' LT.	1,860,622.2015	1,129,664.8247
561	1007+38.32	115.49' LT.	1,860,697.5331	1,129,675.7733
559	1007+38.71	79.50' LT.	1,860,661.5990	1,129,677.1388
2575	1007+54.82	70.00' LT.	1,860,652.5018	1,129,693.4942
556	1007+55.14	40.51' LT.	1,860,623.0278	1,129,694.8129
2576	1007+59.01	70.00' LT.	1,860,652.6153	1,129,697.8874
2577	1007+67.79	50.85' LT.	1,860,633.7122	1,129,706.9797
2578	1008+15.44	45.54' LT.	1,860,629.6868	1,129,754.7595
2579	1012+25.62	45.74' LT.	1,860,640.9837	1,130,164.7842
513	1012+25.68	40.74' LT.	1,860,635.9870	1,130,164.9711
514	1012+91.68	40.77' LT.	1,860,637.8048	1,130,230.9492



MODEL: D:\data\PARSONS\Illinois\State Documents\Ill_43 at 65th\40 - Design\CAD_CORD\Roadway\Sheets_Demo\182525-Sub-P4_BD_08.dgn
FILE NAME: D:\data\PARSONS\Illinois\State Documents\Ill_43 at 65th\40 - Design\CAD_CORD\Roadway\Sheets_Demo\182525-Sub-P4_BD_08.dgn

PARSONS
TRANSPORTATION GROUP
ENGINEERS & PLANNERS
221 SOUTH MICHIGAN PLAZA, SUITE 2600
CHICAGO, IL 60606
Tel: 312.424.4000 Fax: 312.424.4016

USER NAME = p007681G	DESIGNED -	REVISED -
PLOT SCALE = 0.100' / 1 in.	DRAWN -	REVISED -
PLOT DATE = 5/9/2025	CHECKED -	REVISED -
	DATE -	REVISED -

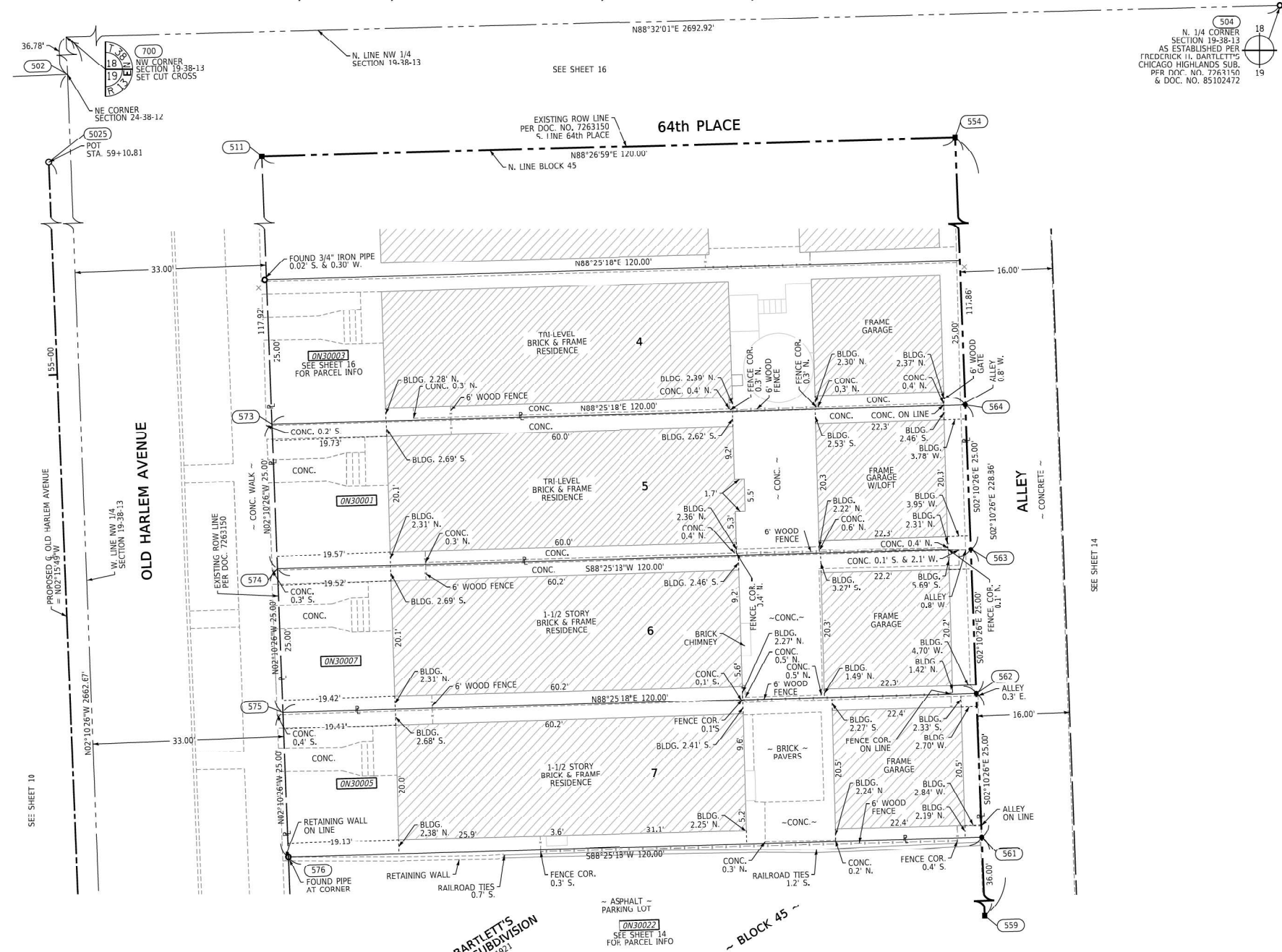
STATE OF ILLINOIS
DEPARTMENT OF TRANSPORTATION

BUILDING DEMOLITION - PLAT OF HIGHWAYS

SCALE: SHEET 08 OF 12 SHEETS STA. TO STA.

F.A.P. RTE.	SECTION	COUNTY	TOTAL SHEETS	SHEET NO.
348	2025-1071-DM	COOK	12	08
CONTRACT NO. 62Y25				
ILLINOIS FED. AID PROJECT				

PART OF THE NW 1/4 OF SECTION 19, TWP. 38 N., R. 13 E. OF THE 3RD. P.M., IN COOK COUNTY, ILLINOIS.



COORDINATE TABLE - OLD HARLEM AVENUE COORDINATES SHOWN HEREON ARE REFERENCED TO THE ILLINOIS STATE PLANE COORDINATE SYSTEM, EAST ZONE, NAD83 (2011)				
PT. NO.	STATION	OFFSET	NORTHING	EASTING
559	53+77.55	156.54' RT.	1,860,661.5590	1,129,677.1389
561	54+13.55	156.60' RT.	1,860,697.5331	1,129,675.7733
576	54+14.99	36.61' RT.	1,860,694.2282	1,129,555.8201
562	54+38.55	156.64' RT.	1,860,722.5151	1,129,674.8251
575	54+39.99	36.65' RT.	1,860,719.2102	1,129,554.8719
563	54+63.55	156.68' RT.	1,860,747.4971	1,129,673.8768
574	54+64.99	36.69' RT.	1,860,744.1922	1,129,553.9236
564	54+88.55	156.72' RT.	1,860,772.4791	1,129,672.9285
573	54+89.99	36.73' RT.	1,860,769.1742	1,129,552.9753
554	56+06.41	156.90' RT.	1,860,890.2333	1,129,666.4580
511	56+07.91	36.91' RT.	1,860,887.0070	1,129,548.5026
5025	59+10.81	0.00' RT.	1,861,188.2122	1,129,499.6552
700	N/A	N/A	1,861,920.1840	1,129,476.2409
502	N/A	N/A	1,861,883.4310	1,129,477.6565
504	N/A	N/A	1,861,954.6440	1,130,822.4161

STATE OF ILLINOIS)
COUNTY OF WILL)SS

THIS IS TO CERTIFY THAT I, DAVID A. CLAASSEN, AN ILLINOIS PROFESSIONAL LAND SURVEYOR, (WE, CLAASSEN, WHITE & ASSOCIATES, P.C. AN ILLINOIS PROFESSIONAL DESIGN FIRM LAND SURVEYING CORPORATION, NUMBER 184-004039,) HAVE SURVEYED THE PLAT OF HIGHWAYS SHOWN HEREON IN SECTION 19, TOWNSHIP 38 NORTH, RANGE 13 EAST OF THE THIRD PRINCIPAL MERIDIAN, COOK COUNTY, THAT THE SURVEY IS TRUE AND COMPLETE AS SHOWN TO THE BEST OF MY KNOWLEDGE AND BELIEF, THAT THE PLAT CORRECTLY REPRESENTS SAID SURVEY, THAT ALL MONUMENTS FOUND AND ESTABLISHED ARE OF PERMANENT QUALITY AND OCCUPY THE POSITIONS SHOWN THEREON AND THAT THE MONUMENTS ARE SUFFICIENT TO ENABLE THE SURVEY TO BE RETRACED, MADE FOR THE DEPARTMENT OF TRANSPORTATION, STATE OF ILLINOIS.

DATED AT _____, ILLINOIS THIS ____ DAY OF _____, 20__ A.D.

ILLINOIS PROFESSIONAL LAND SURVEYOR NO. 035-002962
LICENSE EXPIRATION DATE: NOVEMBER 30, 2026

THIS PROFESSIONAL SERVICE CONFORMS TO THE CURRENT ILLINOIS MINIMUM STANDARDS FOR A BOUNDARY SURVEY.



PREPARED BY:

CLAASSEN, WHITE & ASSOCIATES, P.C.
LAND SURVEYORS
121 AIRPORT DRIVE, UNIT I, JOLIET, ILLINOIS 60431
(815) 744-3720 clausenwhite@cwasurevey.com
CWA JOB #1636

FREDERICK H. BARTLETT'S
CHICAGO HIGHLAND SUBDIVISION
RECORDED SEPTEMBER 12, 1921
DOCUMENT NO. 7263150

PARCEL NUMBER	TOTAL HOLDINGS ACRES	FEE SIMPLE ACQUISITION				REMAINDER ACRES	EASEMENT AREA		PARCEL INDEX NUMBER
		GROSS ACRES	SQ FT	PREVIOUSLY DEDICATED ACRES	NET SQ FT		ACRES	SQ FT	
0N30001	0.069	0.069			0.069	0.000			19-19-1124005
0N30005	0.069	0.069			0.069	0.000			19-19-1124007
0N30007	0.069	0.069			0.069	0.000			19-19-1124006

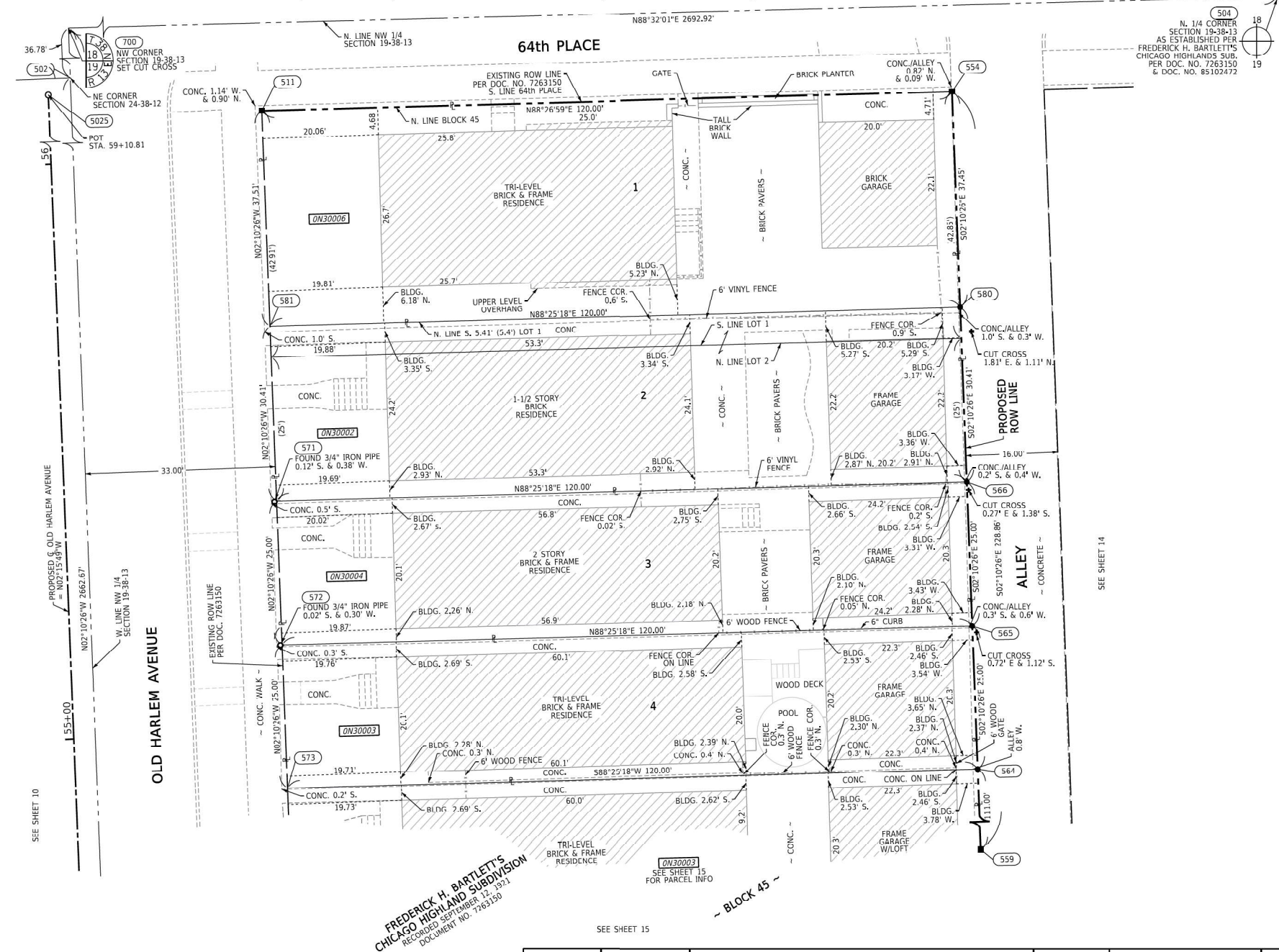
ILLINOIS DEPARTMENT OF TRANSPORTATION
PLAT OF HIGHWAYS

F.A. RTE.:	SECTION:	COUNTY: COOK	JOB NO.: R-90-001-21
	STA 54+13.55 TO STA 54+89.99	ROUTE: IL-43 (HARLEM AVENUE)	
		SHEET NO. 15 OF 23 SHEETS	

USER NAME = p007881G	DESIGNED -	REVISED -
	DRAWN -	REVISED -
PLOT SCALE = 0.100" = 1 ft.	CHECKED - KAG	REVISED -
PLOT DATE = 5/9/2025	DATE - 02/12/2025	REVISED -

F.A.P. RTE.	SECTION	COUNTY	TOTAL SHEETS	SHEET NO.
348	2025-1071-DM	COOK	12	09
			CONTRACT NO.	62Y25
		ILLINOIS	FED. AID PROJECT	

PART OF THE NW 1/4 OF SECTION 19, TWP. 38 N., R. 13 E. OF THE 3RD. P.M., IN COOK COUNTY, ILLINOIS.



COORDINATE TABLE - OLD HARLEM AVENUE				
COORDINATES SHOWN HEREON ARE REFERENCED TO THE ILLINOIS STATE PLANE COORDINATE SYSTEM, EAST ZONE, NAD83 (2011)				
PT.NO.	STATION	OFFSET	NORTHING	EASTING
559	53+77.55	156.54' RT.	1,860,661.5590	1,129,677.1380
564	54+88.55	156.72' RT.	1,860,772.4791	1,129,672.9285
573	54+89.99	36.73' RT.	1,860,768.1742	1,129,552.9753
565	55+13.55	156.76' RT.	1,860,707.4612	1,129,671.6803
572	55+14.99	36.77' RT.	1,860,794.1562	1,129,552.0271
566	55+38.55	156.80' RT.	1,860,877.4437	1,129,671.0370
571	55+39.99	36.81' RT.	1,860,819.1382	1,129,551.0788
580	55+68.96	156.84' RT.	1,860,852.8316	1,129,669.8785
581	55+70.40	36.85' RT.	1,860,849.5266	1,129,549.9753
554	56+06.41	156.90' RT.	1,860,890.2533	1,129,668.4580
511	56+07.91	36.91' RT.	1,860,887.0070	1,129,548.5026
5025	59+10.81	0.00' RT.	1,861,188.2122	1,129,499.6552
700	N/A	N/A	1,861,920.1840	1,129,476.2409
502	N/A	N/A	1,861,003.4310	1,129,477.6565
504	N/A	N/A	1,861,954.6440	1,130,822.4161

STATE OF ILLINOIS)
COUNTY OF WILL)SS

THIS IS TO CERTIFY THAT I, DAVID A. CLAASSEN, AN ILLINOIS PROFESSIONAL LAND SURVEYOR, (WE, CLAASSEN, WHITE & ASSOCIATES, P.C. AN ILLINOIS PROFESSIONAL DESIGN FIRM LAND SURVEYING CORPORATION, NUMBER 184-004039,) HAVE SURVEYED THE PLAT OF HIGHWAYS SHOWN HEREON IN SECTION 19, TOWNSHIP 38 NORTH, RANGE 13 EAST OF THE THIRD PRINCIPAL MERIDIAN, COOK COUNTY, THAT THE SURVEY IS TRUE AND COMPLETE AS SHOWN TO THE BEST OF MY KNOWLEDGE AND BELIEF, THAT THE PLAT CORRECTLY REPRESENTS SAID SURVEY, THAT ALL MONUMENTS FOUND AND ESTABLISHED ARE OF PERMANENT QUALITY AND OCCUPY THE POSITIONS SHOWN THEREON AND THAT THE MONUMENTS ARE SUFFICIENT TO ENABLE THE SURVEY TO BE RETRACED, MADE FOR THE DEPARTMENT OF TRANSPORTATION, STATE OF ILLINOIS.

DATED AT _____, ILLINOIS THIS ____ DAY OF _____, 20__ A.D.

ILLINOIS PROFESSIONAL LAND SURVEYOR NO. 035-002962
LICENSE EXPIRATION DATE: NOVEMBER 30, 2026

THIS PROFESSIONAL SERVICE CONFORMS TO THE CURRENT ILLINOIS MINIMUM STANDARDS FOR A BOUNDARY SURVEY.



PREPARED BY:

CLAASSEN, WHITE & ASSOCIATES, P.C.
LAND SURVEYORS
121 AIRPORT DRIVE, UNIT I, JOLIET, ILLINOIS 60431
(815) 744-3720 clausenwhite@cwasurevey.com
CWA Job #7636

MODEL: SHOWN/NAME
FILE NAME: 19-112-025

PLOTTED BY: = JLS	FIELD - 12/20/2024	REVISED -
FIELD WORK COMPLETED = 12/20/2024	DRAWN - JLS	REVISED -
PLOT SCALE = 1"=10'	CHECKED - KAG	REVISED -
PLOT DATE = 02/12/2025	DATE - 02/12/2025	REVISED -

ILLINOIS DEPARTMENT OF TRANSPORTATION
PLAT OF HIGHWAYS

F.A. RTE.:	SECTION:	COUNTY: COOK	JOB NO.: R-90-001-21
	STA 54+88.55 TO STA 56+07.91	ROUTE: IL-43 (HARLEM AVENUE)	
		SHEET NO. 16 OF 23 SHEETS	

PARSONS
TRANSPORTATION GROUP
ENGINEERS & PLANNERS
221 SOUTH WILSON AVENUE, SUITE 200
CHICAGO, IL 60606
Tel: 312.424.4000 Fax: 312.424.4016

USER NAME = p007681G	DESIGNED -	REVISED -
	DRAWN -	REVISED -
PLOT SCALE = 0.100' / 1 in.	CHECKED -	REVISED -
PLOT DATE = 5/9/2025	DATE -	REVISED -

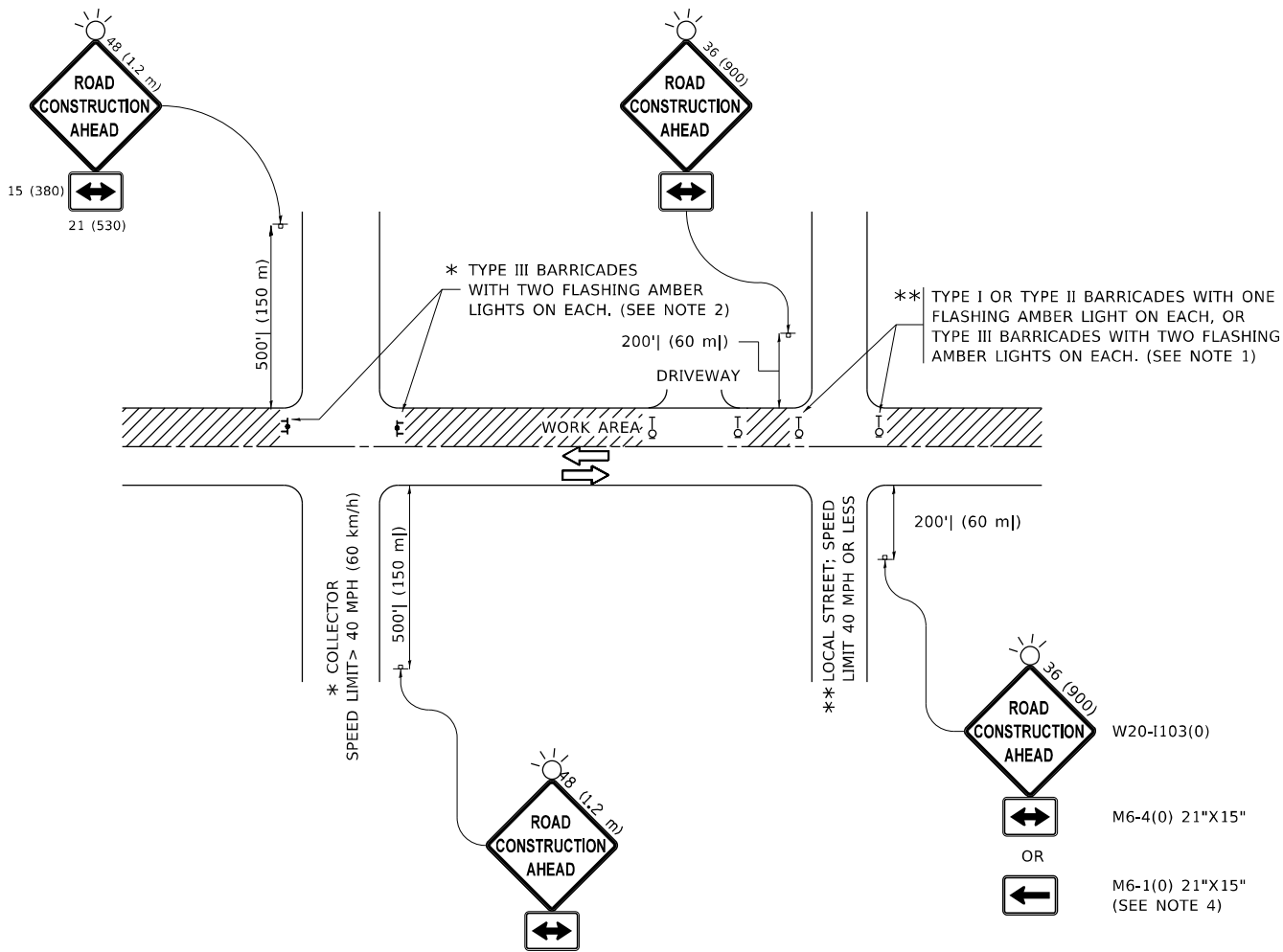
STATE OF ILLINOIS
DEPARTMENT OF TRANSPORTATION

BUILDING DEMOLITION - PLAT OF HIGHWAYS

SCALE: SHEET 10 OF 12 SHEETS STA. TO STA.

F.A.P. RTE.	SECTION	COUNTY	TOTAL SHEETS	SHEET NO.
348	2025-1071-DM	COOK	12	10
CONTRACT NO. 62Y25				
ILLINOIS FED. AID PROJECT				

MODEL: Default
FILE: h:\m11c\proj\ulster-aw-bentley.com\pl\W\DOT\Documents\DOT Office\District 1\Projects\Dist5\H2723\CA\CAOD\DistalCAD\sheet11c10.dgn



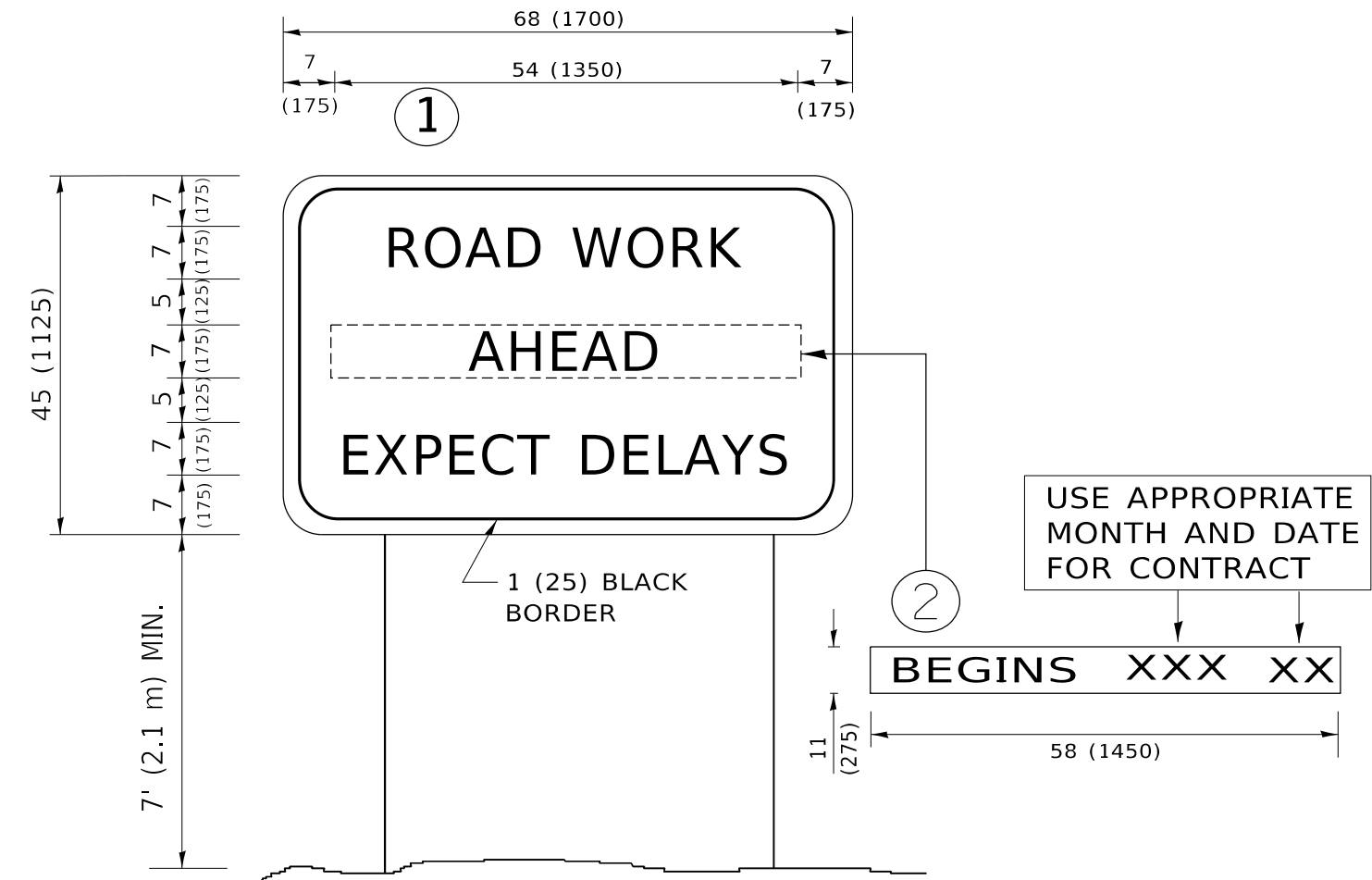
NOTES:

- SIDE ROAD WITH A SPEED LIMIT OF 40 MPH (60 km/h) OR LESS AS SHOWN ON THE DRAWING AND AS DIRECTED BY THE ENGINEER:
 - ONE "ROAD CONSTRUCTION AHEAD" SIGN 36 x 36 (900x900) WITH A FLASHER MOUNTED ON IT APPROXIMATELY 200' (60 m) IN ADVANCE OF THE MAIN ROUTE.
 - THE CLOSED PORTION OF THE MAIN ROUTE SHALL BE PROTECTED BY BLOCKING WITH TYPE I, TYPE II OR TYPE III BARRICADES, 1/3 OF THE CROSS SECTION OF THE CLOSED PORTION.
- SIDE ROAD WITH A SPEED LIMIT GREATER THAN 40 MPH (60 km/h) AS SHOWN ON THE DRAWING AND AS DIRECTED BY THE ENGINEER:
 - ONE "ROAD CONSTRUCTION AHEAD" SIGN 48 x 48 (1.2 m x 1.2 m) WITH A FLASHER MOUNTED ON IT APPROXIMATELY 500' (150 m) IN ADVANCE OF THE MAIN ROUTE.
 - THE CLOSED PORTION OF THE MAIN ROUTE SHALL BE PROTECTED BY BLOCKING WITH TYPE III BARRICADES, 1/2 OF THE CROSS SECTION OF THE CLOSED PORTION.
- CONES MAY BE SUBSTITUTED FOR BARRICADES OR DRUMS AT HALF THE SPACING DURING DAY OPERATIONS. CONES SHALL BE A MINIMUM OF 28 (710) IN HEIGHT.
- WHEN THE SIDE ROAD LIES BETWEEN THE BEGINNING OF THE MAINLINE SIGNING AND THE WORK ZONE, A SINGLE HEADED ARROW (M6-1) SHALL BE USED IN LIEU OF THE DOUBLE HEADED ARROW (M6-4).
- WHEN WORK IS BEING PERFORMED ON A SIDE ROAD OR DRIVEWAY, FOLLOW THE APPLICABLE STANDARD(S). THE DIRECTIONAL ARROW (M6-1 OR M6-4) SHALL BE COVERED OR REMOVED WHEN NO LONGER CONSISTENT WITH THE TRAFFIC CONTROL SET-UP.
- ADVANCE WARNING SIGNS ARE TO BE OMITTED ON DRIVEWAYS UNLESS OTHERWISE SPECIFIED IN THE PLANS OR BY THE ENGINEER.
- THE TRAFFIC CONTROL AND PROTECTION FOR SIDE ROADS, INTERSECTIONS, AND DRIVEWAYS SHALL BE INCLUDED IN THE COST OF SPECIFIED TRAFFIC CONTROL STANDARDS OR ITEMS.

All dimensions are in inches (millimeters)
unless otherwise shown.

	USER NAME = Lawrence,DeManche	DESIGNED - L.H.A.	REVISED - T. RAMMACHER 01-06-00	STATE OF ILLINOIS DEPARTMENT OF TRANSPORTATION	TRAFFIC CONTROL AND PROTECTION FOR SIDE ROADS, INTERSECTIONS, AND DRIVEWAYS	SCALE: NONE	SHEET 1 OF 1 SHEETS	STA. TO STA.	F.A.P. RTE.	SECTION	COUNTY	TOTAL SHEETS	SHEET NO.
		DRAWN -	REVISED - A. SCHUETZE 07-01-13						348	2025-1071-DM	COOK	12	11
	PLOT SCALE = 100,0000 ' / in.	CHECKED -	REVISED - A. SCHUETZE 09-15-16						TC-10		CONTRACT NO. 62Y25		
	PLOT DATE = 5/3/2024	DATE - 06-89	REVISED - D. SENDERAK 05-03-24						ILLINOIS FED. AID PROJECT				

MODEL: Default
FILE NAME: p:\u0084EB\DOT\Illinois.gov\PIWDOT\Documents\DOT_Offices\District_1\Projects\DU15422\340\CADData\CAD\Sheet\TC22.dgn



NOTES:

1. USE BLACK LETTERING ON ORANGE BACKGROUND.
2. ERECT SIGNS IN ADVANCE OF THE LOCATION FOR THE "ROAD CONSTRUCTION AHEAD" SIGN AT LOCATIONS AS DIRECTED BY THE ENGINEER.
3. ERECT SIGN①WITH INSTALLED PANEL②ONE WEEK PRIOR TO THE START OF CONSTRUCTION.
4. REMOVE PANEL②SOON AFTER THE START OF CONSTRUCTION.
5. SEE SPECIAL PROVISION FOR "TEMPORARY INFORMATION SIGNING" FOR ADDITIONAL INFORMATION.
6. ONE SIGN ASSEMBLY EQUALS 25.70 SQ. FT. (2.3 SQ. M.)
7. SHALL BE PAID FOR AS TEMPORARY INFORMATION SIGNING.

ALL DIMENSIONS ARE IN INCHES (MILLIMETERS)
UNLESS OTHERWISE SHOWN.

	USER NAME = footemj	DESIGNED -	REVISED - R. MIRS 09-15-97	STATE OF ILLINOIS DEPARTMENT OF TRANSPORTATION	ARTERIAL ROAD INFORMATION SIGN				F.A.P. RTE.	SECTION	COUNTY	TOTAL SHEETS	SHEET NO.
		DRAWN -	REVISED - R. MIRS 12-11-97						348	2025-1071-DM	COOK	12	12
	PLOT SCALE = 50,0000 ' / in.	CHECKED -	REVISED -T. RAMMACHER 02-02-99						TC-22		CONTRACT NO. 62Y25		
	PLOT DATE = 3/4/2019	DATE -	REVISED - C. JUCIUS 01-31-07						ILLINOIS FED. AID PROJECT				
					SCALE: NONE	SHEET 1	OF 1 SHEETS	STA.	TO STA.				