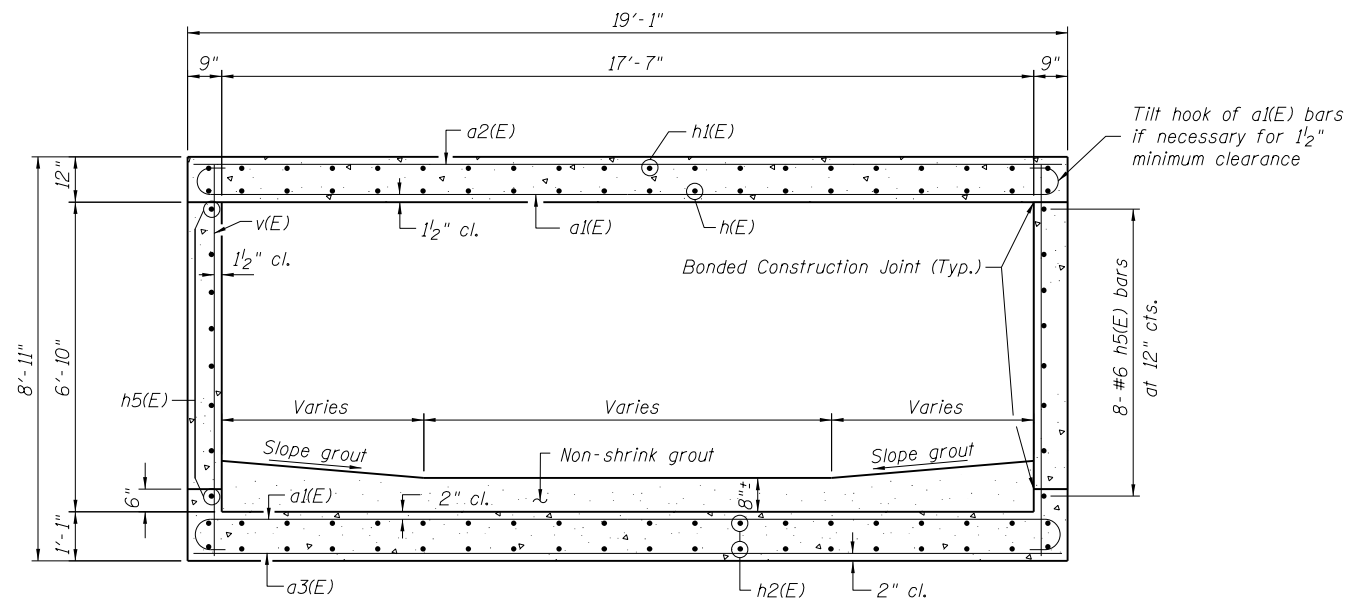


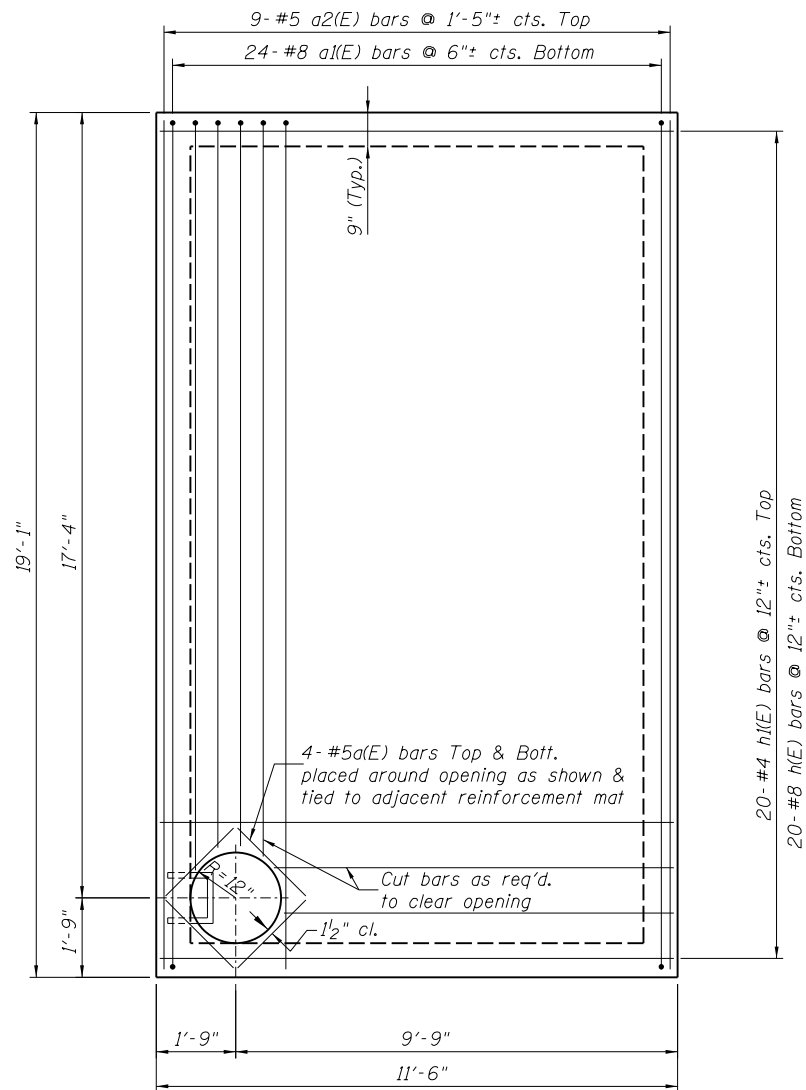
SECTION B-B



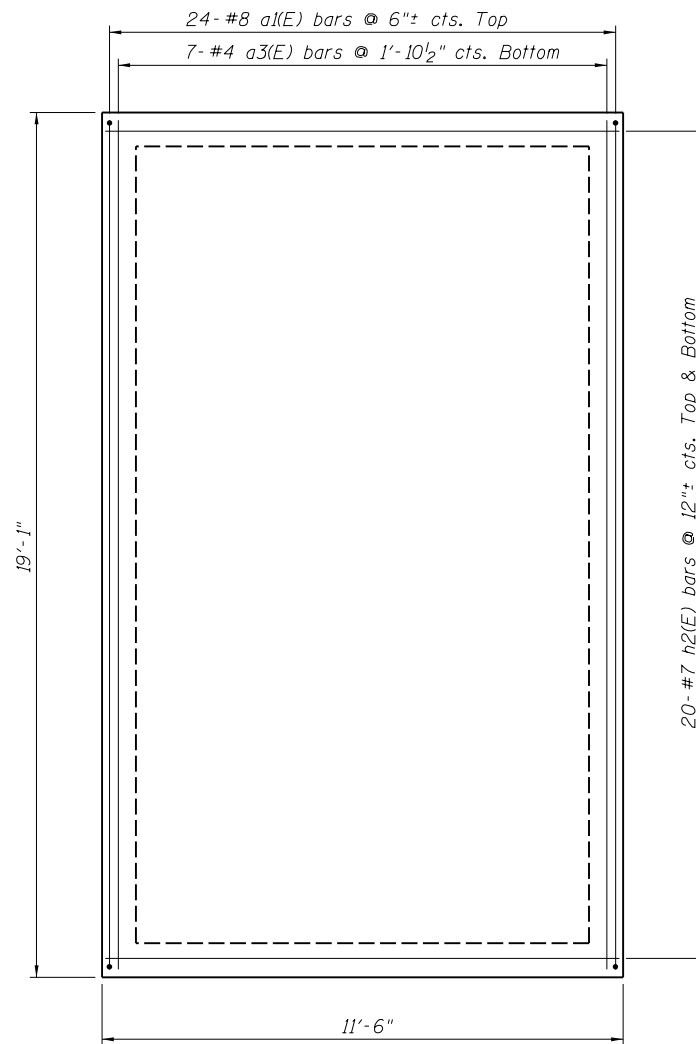
SECTION A-A

Tilt hook of a1(E) bars if necessary for 1 1/2\"/>

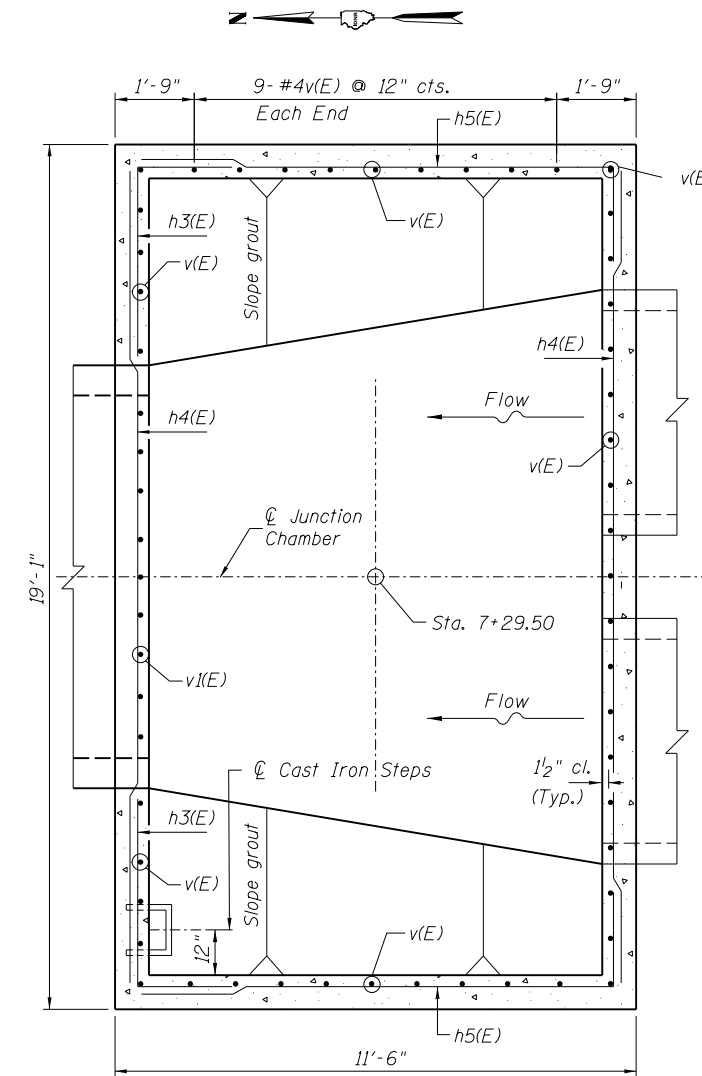
- Notes:
- All exposed edges of concrete shall have a 3/4\"/>
 - Reinforcement bars designated (E) shall be epoxy coated.
 - Contractor shall construct top slab or brace junction chamber walls prior to backfilling.
 - Cost of cast iron steps included with Concrete Structures.
 - Precast alternate is not allowed.
 - Cost of non-shrink grout included with Concrete Structures.



TOP SLAB

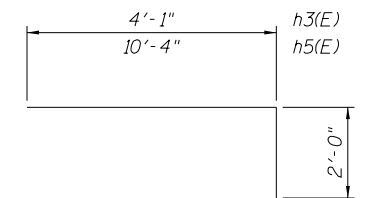


BOTTOM SLAB

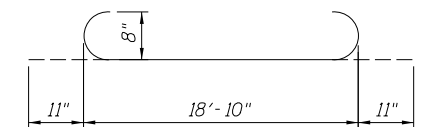


PLAN

(Showing reinforcement in walls)



BARS h3(E) & h5(E)



BAR a1(E)

BILL OF MATERIAL

Bar	No.	Size	Length	Shape
a1(E)	8	#5	2'-3"	—
a1(E)	48	#8	20'-8"	—
a2(E)	9	#5	18'-10"	—
a3(E)	7	#4	18'-10"	—
h(E)	20	#8	11'-3"	—
h1(E)	20	#4	11'-3"	—
h2(E)	40	#7	11'-3"	—
h3(E)	16	#6	6'-1"	—
h4(E)	4	#6	18'-0"	—
h5(E)	16	#6	12'-4"	—
h6(E)	8	#6	7'-6"	—
v(E)	47	#4	8'-7"	—
v1(E)	9	#4	2'-3"	—
Concrete Structures		Cu Yd	25.3	
Reinforcement Bars, Epoxy Coated		Pound	5530	
Structure Excavation		Cu Yd	119	

O:\OwrProj\m\Projects\CrystalCreek IIB\Plan Sheets\22 Junction Chamber No 3 Details.dgn

8:12:50 AM

7/6/2013

Checked By TMM

Checked By RLP

Designed By RLP

Drawn By JUF