

STATE OF ILLINOIS  
DEPARTMENT OF TRANSPORTATION  
DIVISION OF HIGHWAYS

**PROPOSED  
HIGHWAY PLANS**

F.A.P. ROUTE 531: MANHATTAN-MONEE RD  
SCHOOLHOUSE ROAD TO CENTER ROAD  
SECTION: 40X-RS-9  
RESURFACING  
WILL COUNTY  
C-91-341-11

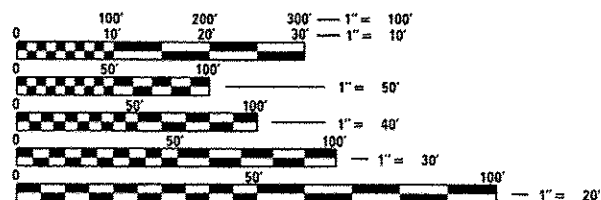
F.A.P. RTE.	SECTION	COUNTY	TOTAL SHEETS	SHEET NO.
531	40X-RS-9	WILL	18	1
		ILLINOIS	CONTRACT NO. 60N71	

FOR INDEX OF SHEETS, SEE SHEET NO. 2

IMPROVEMENT LOCATED IN MANHATTAN &  
GREEN GARDEN TOWNSHIPS

**TRAFFIC DATA**

2008 ADT = 4,600  
POSTED SPEED LIMIT: 55 MPH

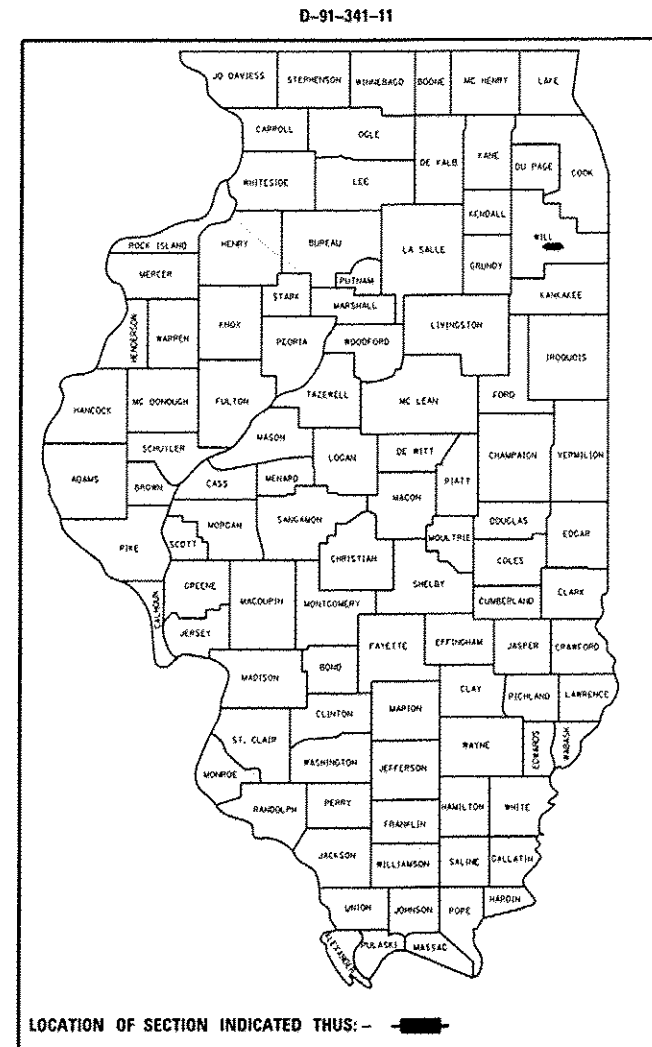


FULL SIZE PLANS HAVE BEEN PREPARED USING STANDARD ENGINEERING SCALES. REDUCED SIZED PLANS WILL NOT CONFORM TO STANDARD SCALES. IN MAKING MEASUREMENTS ON REDUCED PLANS, THE ABOVE SCALES MAY BE USED.

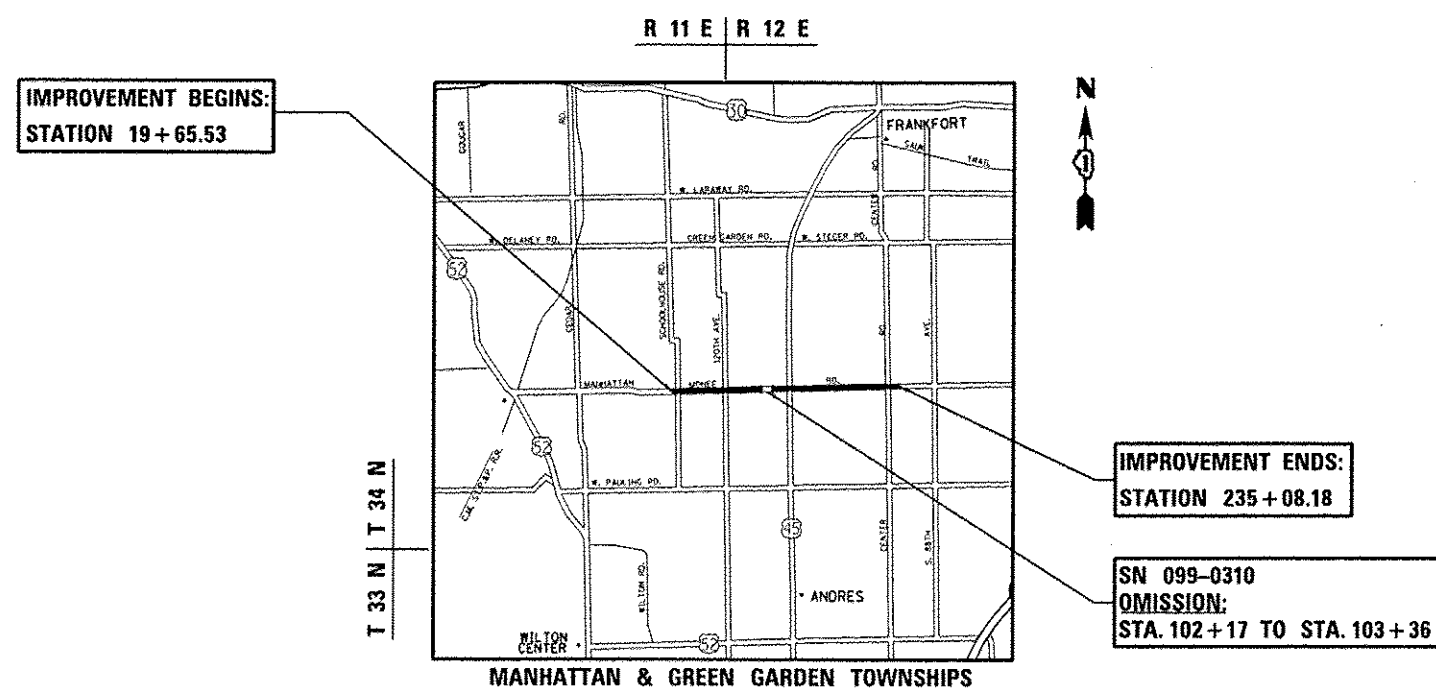
J.U.L.I.E.  
JOINT UTILITY LOCATION INFORMATION FOR EXCAVATION  
1-800-892-0123  
OR 811

PROJECT ENGINEER: J. ALAIN MIDY (847) 221-3056  
PROJECT MANAGER: ISSAM RAYYAN (847) 705-4178

CONTRACT NO. 60N71



LOCATION OF SECTION INDICATED THUS: - [black rectangle] -



IMPROVEMENT BEGINS:  
STATION 19 + 65.53

IMPROVEMENT ENDS:  
STATION 235 + 08.18

SN 099-0310  
OMISSION:  
STA. 102 + 17 TO STA. 103 + 36

GROSS LENGTH OF IMPROVEMENT = 21,542.65 FEET = 4.08 MILES  
NET LENGTH OF IMPROVEMENT = 21,423.65 FEET = 4.06 MILES

STATE OF ILLINOIS  
DEPARTMENT OF TRANSPORTATION  
DIVISION OF HIGHWAYS

SUBMITTED *January 31, 2013*  
*John Fortman*  
DEPUTY DIRECTOR OF HIGHWAYS, REGION ENGINEER

*March 22, 2013*  
*John D. Pa...*  
ENGINEER OF DESIGN AND ENVIRONMENT

*March 22, 2013*  
*Orin Osmon*  
DIRECTOR OF HIGHWAYS, CHIEF ENGINEER

PRINTED BY THE AUTHORITY  
OF THE STATE OF ILLINOIS