

F.A.P. RTE.	SECTION	COUNTY	TOTAL SHEETS	SHEET NO.
307	130N-3 (11)	DUPAGE	141	1

D-91-103-12  
 \* 141 + 1 = 142  
 60R46

STATE OF ILLINOIS  
 DEPARTMENT OF TRANSPORTATION  
 DIVISION OF HIGHWAYS

**PLANS FOR PROPOSED  
 HIGHWAY**

F.A.P. ROUTE 307 (ILLINOIS ROUTE 64)  
 SECTION: 130N-3 (11)  
 AT POWIS ROAD  
 ADD LANES, LIGHTING, AND TRAFFIC SIGNALS  
 PROJECT NO. NHPP-0307(030)  
 DUPAGE COUNTY  
 C-91-103-12



*Nathan J. Holman*  
 NATHAN J. HOLMAN  
 062-058721  
 LICENSED PROFESSIONAL ENGINEER OF ILLINOIS  
 1-115, 125-141  
 SHEET NOS.  
 11/30/13 EXPIRES  
 1/25/13 DATE

*Anna Chiu*  
 ANNA CHIU  
 062-082877  
 LICENSED PROFESSIONAL ENGINEER OF ILLINOIS  
 1-115, 125-141  
 SHEET NOS.  
 11/30/13 EXPIRES  
 1/29/13 DATE

*James P. Coleman*  
 JAMES P. COLEMAN  
 062-033912  
 REGISTERED PROFESSIONAL ENGINEER OF ILLINOIS  
 116-12A  
 SHEET NOS.  
 11/30/13 EXPIRES  
 1/29/13 DATE

STATE OF ILLINOIS  
 DEPARTMENT OF TRANSPORTATION  
 DIVISION OF HIGHWAYS

SUBMITTED *January 31, 2013*

*John F. ...*  
 DEPUTY DIRECTOR OF HIGHWAYS, REGION ENGINEER

*June 28, 2013*  
*John D. Baranzelli, P.E.*  
 ENGINEER OF DESIGN AND ENVIRONMENT

*June 28, 2013*  
*Omer Osman, P.E.*  
 DIRECTOR OF HIGHWAYS, CHIEF ENGINEER

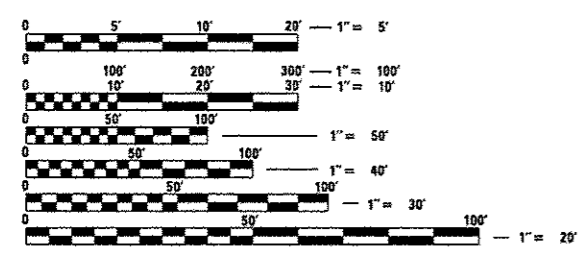
INDEX OF SHEETS  
 FOR INDEX OF SHEETS, SEE SHEET NO. 2

NORTH POWIS ROAD  
 POSTED SPEED = 45 MPH  
 DESIGN SPEED = 45 MPH  
 ADT 3,150 (2009) 10,000 (2020)

SOUTH POWIS ROAD  
 POSTED SPEED = 45 MPH  
 DESIGN SPEED = 45 MPH  
 ADT 7,900 (2009) 20,000 (2020)

DESIGN DESIGNATION  
 3690 (20) ARTERIAL 16.95 (PCC-20)

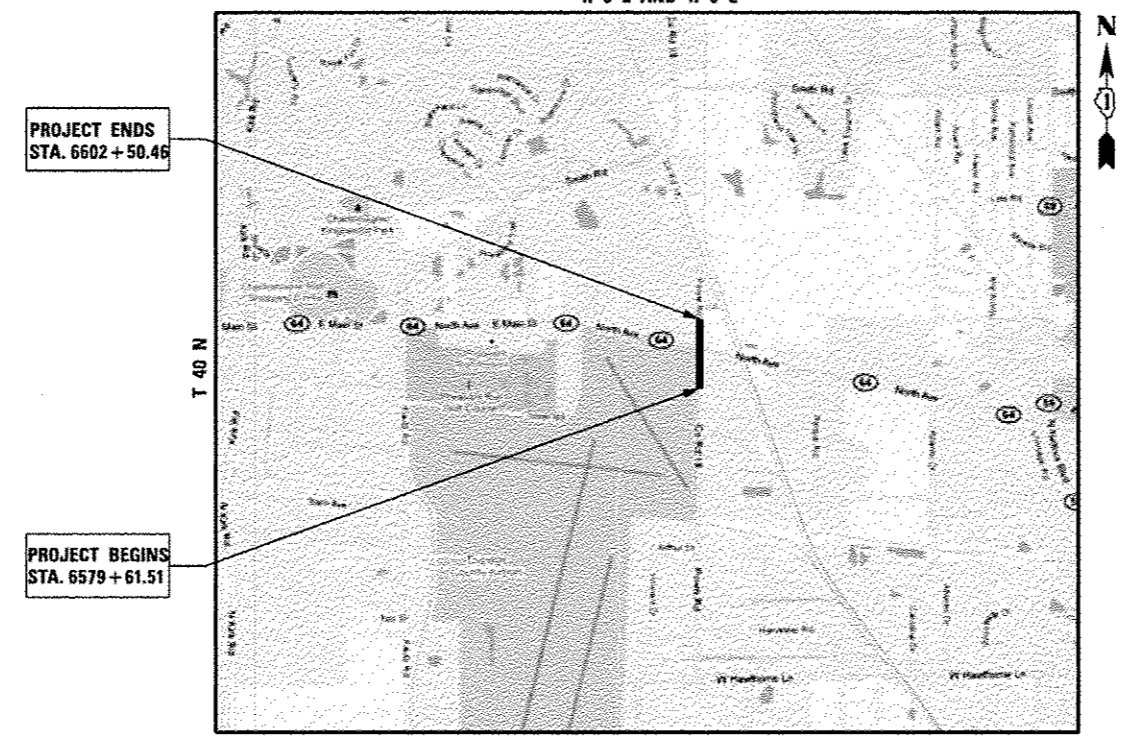
PROJECT LOCATED IN THE  
 CITY OF WEST CHICAGO



FULL SIZE PLANS HAVE BEEN PREPARED USING STANDARD ENGINEERING SCALES. REDUCED SIZED PLANS WILL NOT CONFORM TO STANDARD SCALES. IN MAKING MEASUREMENTS ON REDUCED PLANS, THE ABOVE SCALES MAY BE USED.

J.U.L.I.E.  
 JOINT UTILITY LOCATION INFORMATION FOR EXCAVATION  
 1-800-892-0123

CONTRACT NO. 60R46



WAYNE AND ST. CHARLES TOWNSHIPS  
 GROSS LENGTH OF PROJECT = 2,287.73 LIN. FT. = 0.433 MILES  
 NET LENGTH OF PROJECT = 2,287.73 LIN. FT. = 0.433 MILES

PRINTED BY THE AUTHORITY  
 OF THE STATE OF ILLINOIS

**AECOM**  
 303 EAST WACKER DRIVE  
 SUITE 600  
 CHICAGO, IL 60601  
 (312) 938-0300

DISTRICT ONE - DESIGN / KEN ENG (847) 705-4247