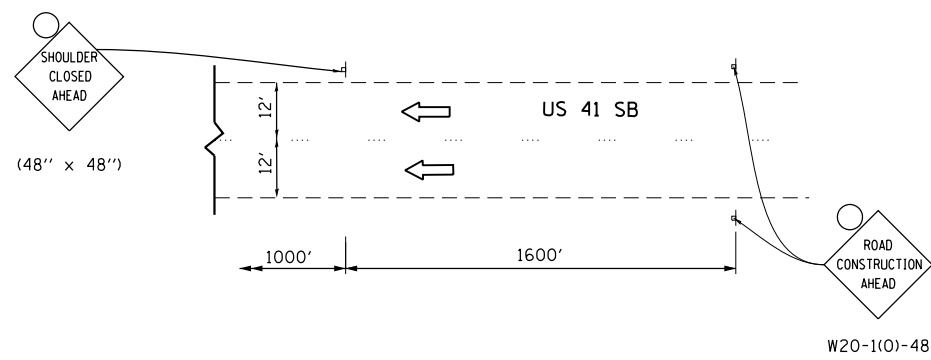
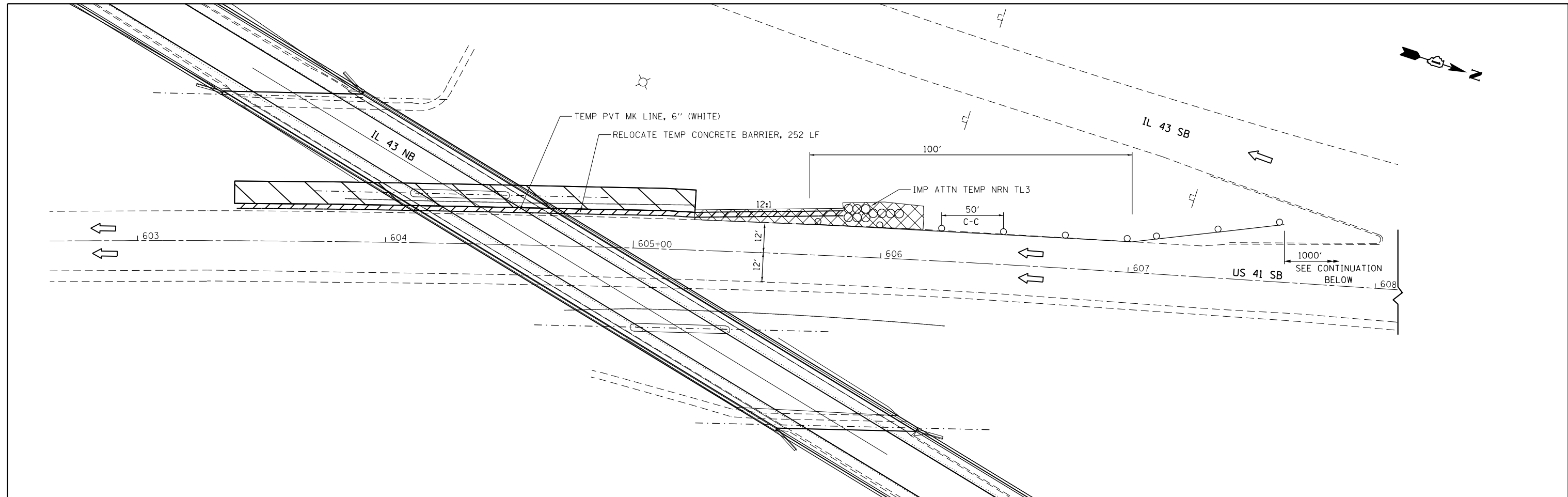


FILE NAME = I:\6710\6710_24 - IL_43 Over US_41\CAD\CADD Sheets\060661-ah-1012.dgn



- NOTES:
- FOR SHOULDER CLOSURES SEE DISTRICT 1 DETAIL TC-17 FOR ADDITIONAL SIGNS AND SIGNING DETAILS.
 - BARRIER WALL MARKERS ON RIGHT SHALL BE CRYSTAL AND MARKERS ON THE LEFT SHALL BE AMBER.

- LEGEND:
- WORK ZONE
 - DIRECTION OF TRAFFIC
 - TEMPORARY CONCRETE BARRIER WALL
 - DRUM WITH MONO-DIRECTIONAL STEADY BURNING LIGHT
 - TEMPORARY IMPACT ATTENUATOR
 - TEMPORARY PAVEMENT

COLLINS ENGINEERS
 123 N. Wacker Dr.
 Suite 800
 Chicago, IL 60606
 Tel: (312) 704-9300
 Fax: (312) 704-9300
 www.collinsengr.com
 ILLINOIS PROFESSIONAL DESIGN FIRM LICENSE NO. 084-088993

USER NAME = rge11	DESIGNED -	REVISED -
PLOT SCALE = 40.0000' / in.	DRAWN -	REVISED -
PLOT DATE = 5/10/2013	CHECKED -	REVISED -
	DATE -	REVISED -

**STATE OF ILLINOIS
 DEPARTMENT OF TRANSPORTATION**

MAINTENANCE OF TRAFFIC STAGE II - US 41 NORTHBOUND			
SCALE:	SHEET	OF SHEETS	STA. TO STA.

F.A. RTE.	SECTION	COUNTY	TOTAL SHEETS	SHEET NO.
2706	125 HB-BR	LAKE	51	15A
CONTRACT NO. 60R61				
ILLINOIS FED. AID PROJECT				