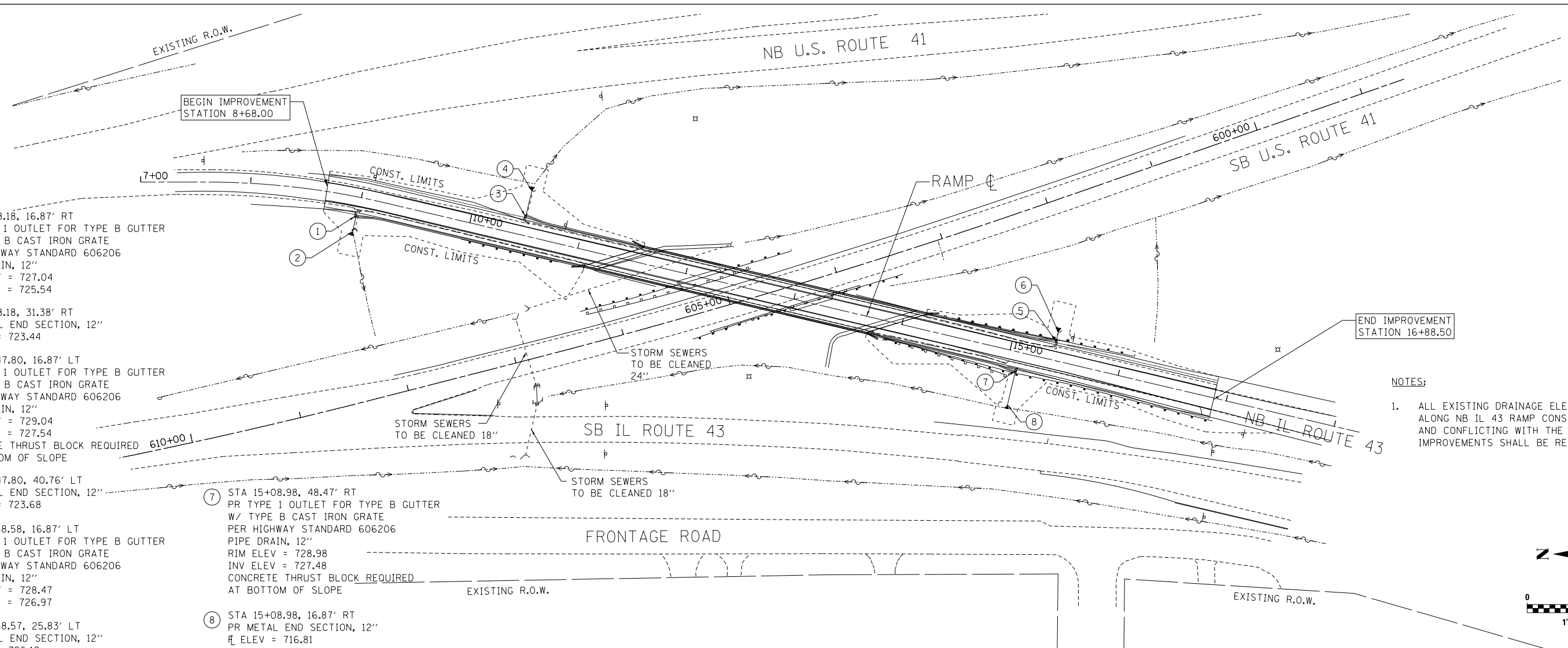


PLAN	SURVEYED	DATE
NOTE BOOK	PLOTTED	BY
NO.	ALIGNED	
	CHECKED	
	FILED	
	NO.	

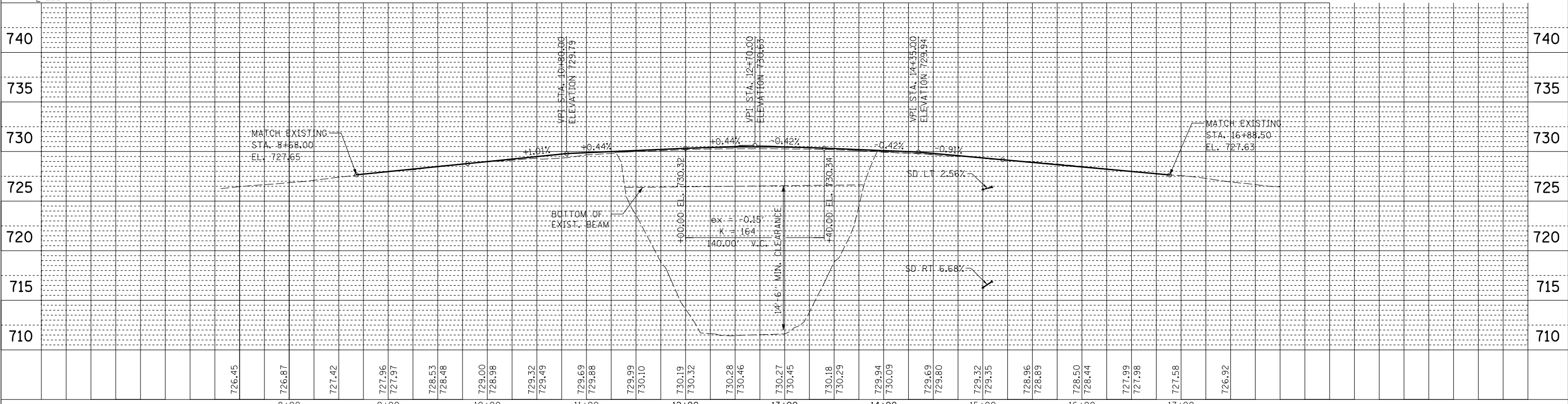
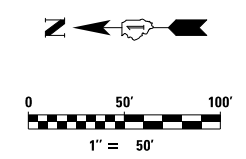
PROFILE	SURVEYED	DATE
NOTE BOOK	PLOTTED	BY
NO.	GRADES	
	CHECKED	
	STRUCTURE	
	NOTATIONS	
	CPAD	

- ① STA 8+98.18, 16.87' RT
PR TYPE 1 OUTLET FOR TYPE B GUTTER
W/ TYPE B CAST IRON GRATE
PER HIGHWAY STANDARD 606206
PIPE DRAIN, 12"
RIM ELEV = 727.04
INV ELEV = 725.54
- ② STA 8+98.18, 31.38' RT
PR METAL END SECTION, 12"
FL ELEV = 723.44
- ③ STA 10+47.80, 16.87' LT
PR TYPE 1 OUTLET FOR TYPE B GUTTER
W/ TYPE B CAST IRON GRATE
PER HIGHWAY STANDARD 606206
PIPE DRAIN, 12"
RIM ELEV = 729.04
INV ELEV = 727.54
CONCRETE THRUST BLOCK REQUIRED
AT BOTTOM OF SLOPE
- ④ STA 10+47.80, 40.76' LT
PR METAL END SECTION, 12"
FL ELEV = 723.68
- ⑤ STA 15+38.58, 16.87' LT
PR TYPE 1 OUTLET FOR TYPE B GUTTER
W/ TYPE B CAST IRON GRATE
PER HIGHWAY STANDARD 606206
PIPE DRAIN, 12"
RIM ELEV = 728.47
INV ELEV = 726.97
- ⑥ STA 15+38.57, 25.83' LT
PR METAL END SECTION, 12"
FL ELEV = 726.12

- ⑦ STA 15+08.98, 48.47' RT
PR TYPE 1 OUTLET FOR TYPE B GUTTER
W/ TYPE B CAST IRON GRATE
PER HIGHWAY STANDARD 606206
PIPE DRAIN, 12"
RIM ELEV = 728.98
INV ELEV = 727.48
CONCRETE THRUST BLOCK REQUIRED
AT BOTTOM OF SLOPE
- ⑧ STA 15+08.98, 16.87' RT
PR METAL END SECTION, 12"
FL ELEV = 716.81



NOTES:
1. ALL EXISTING DRAINAGE ELEMENTS LOCATED ALONG NB IL 43 RAMP CONSTRUCTION LIMITS AND CONFLICTING WITH THE PROPOSED IMPROVEMENTS SHALL BE REMOVED.



LIN ENGINEERING, LTD. Consulting Engineers Chatham, Illinois	USER NAME = *USER*	DESIGNED - SGL	REVISED -	STATE OF ILLINOIS DEPARTMENT OF TRANSPORTATION	IL 43 (WAUKEGAN ROAD) AT US 41 (SB) DRAINAGE PLAN & PROFILE SHEET	F.A.U. R.E. = 2706	SECTION = 125 HB-BR	COUNTY = LAKE	TOTAL SHEETS = 51	SHEET NO. = 17			
	PLOT SCALE = *SCALE*	CHECKED - FML	REVISED -			SCALE: 1" = 50'	SHEET NO. 1 OF 1 SHEETS	STA. 8+68.00 TO STA. 16+88.50	CONTRACT NO. 60R61				
	PLOT DATE = *DATE*	DATE - 02/2012	REVISED -			FED. ROAD DIST. NO. 1 ILLINOIS FED. AID PROJECT							