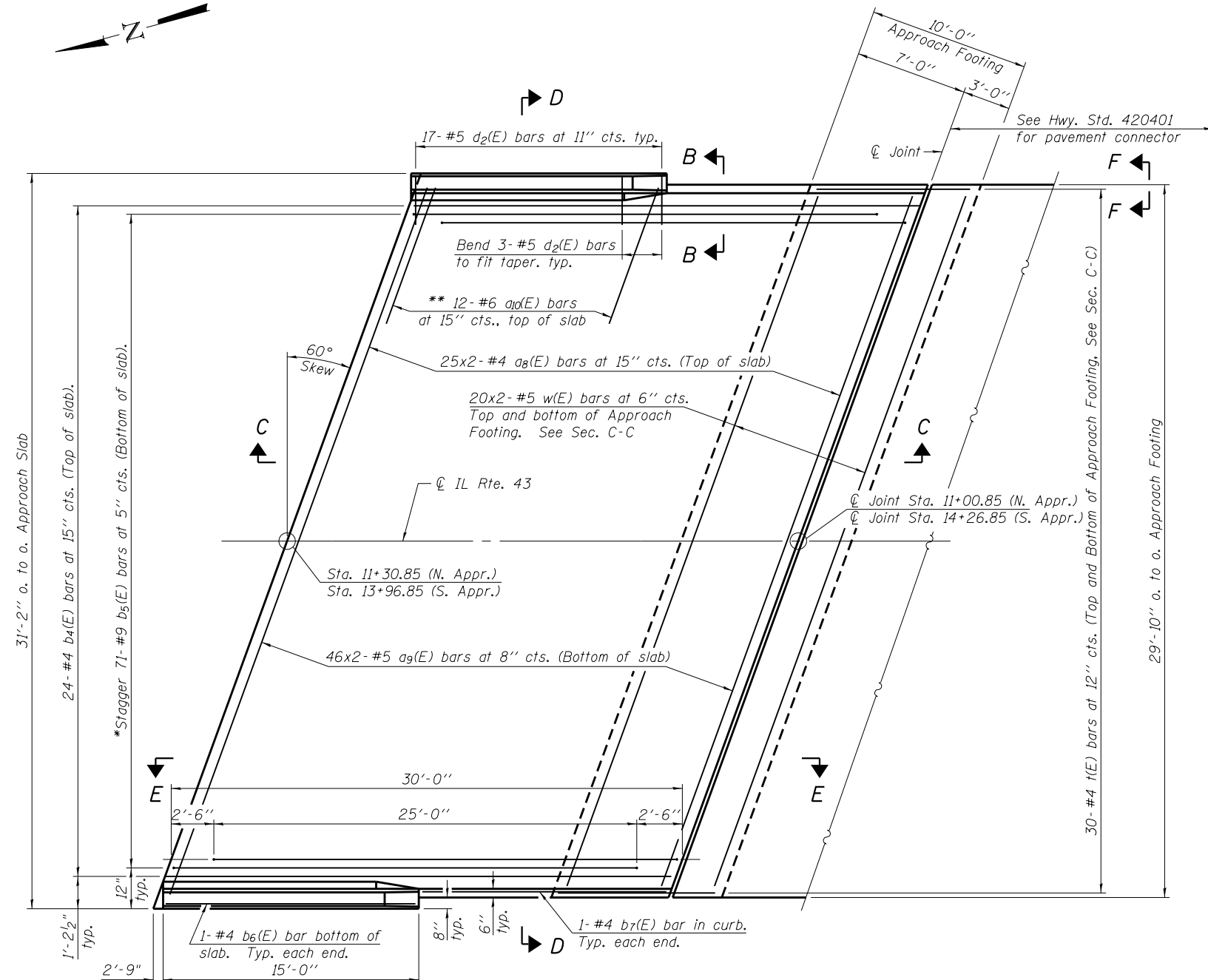


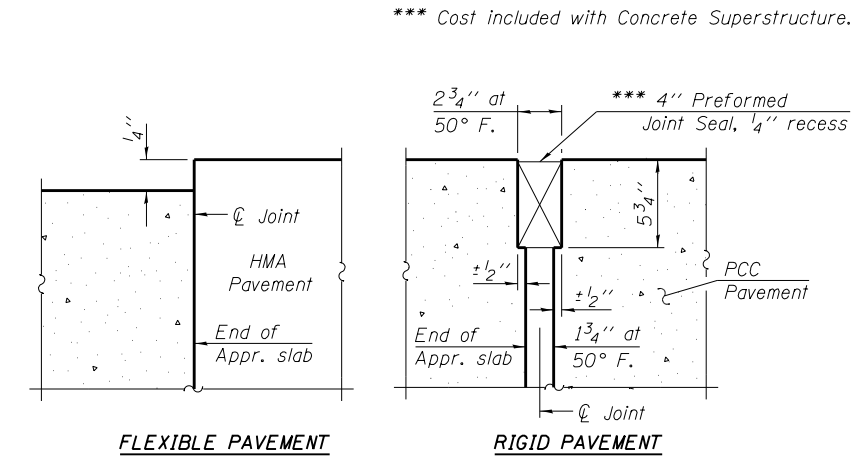
Notes:
See sheet S13 of S24 for Sections C-C & D-D and View E-E.
a₈(E) and a₉(E) bar spacings measured along \hat{C} Rdwy.



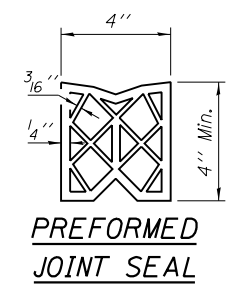
PLAN

(South Approach show, North Approach opposite hand)

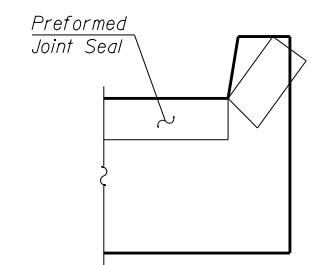
- * Tilt #9 b₅(E) bars as required to maintain clearance.
- ** Space between a₈(E) bars, typ. each parapet.



DETAIL A

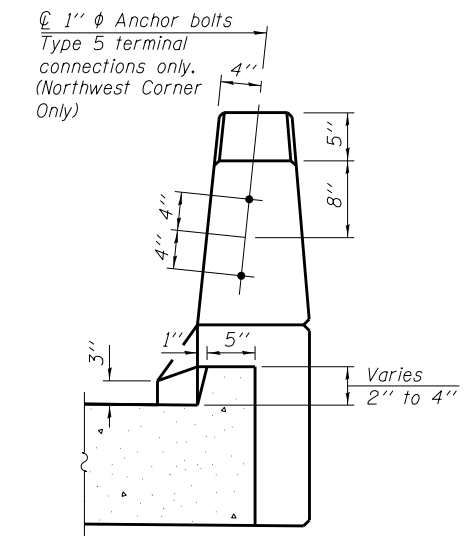


PREFORMED JOINT SEAL



VIEW F-F

Angle Preformed Joint Seal at 45° at curbs when req'd for drainage.



VIEW B-B

MINIMUM BAR LAP

- #4 Bars = 2'-7"
- #5 Bars = 3'-3"

BA-L

10-9-12

(Sheet 1 of 2)

COLLINS ENGINEERS
123 North Wacker Drive
Suite 300
Chicago, IL 60606
(312) 704-9300
www.collinsengr.com
ILLINOIS PROFESSIONAL DESIGN FIRM LICENSE NO. 184-009953

| | | |
|---------------|----------------|-----------|
| USER NAME = | DESIGNED - AMS | REVISED - |
| CHECKED - JMS | REVISIONS - | |
| PLOT SCALE = | DRAWN - DR | REVISED - |
| PLOT DATE = | CHECKED - AMS | REVISED - |

**STATE OF ILLINOIS
DEPARTMENT OF TRANSPORTATION**

**BRIDGE APPROACH SLAB DETAILS
STRUCTURE NO. 049-0087**

SHEET NO. S12 OF S24 SHEETS

| F.A.U. RTE. | SECTION | COUNTY | TOTAL SHEETS | SHEET NO. |
|--------------------|----------|--------|--------------|-----------|
| 2706 | 125HB-BR | LAKE | 51 | 29 |
| CONTRACT NO. 60R61 | | | | |

ILLINOIS FED. AID PROJECT