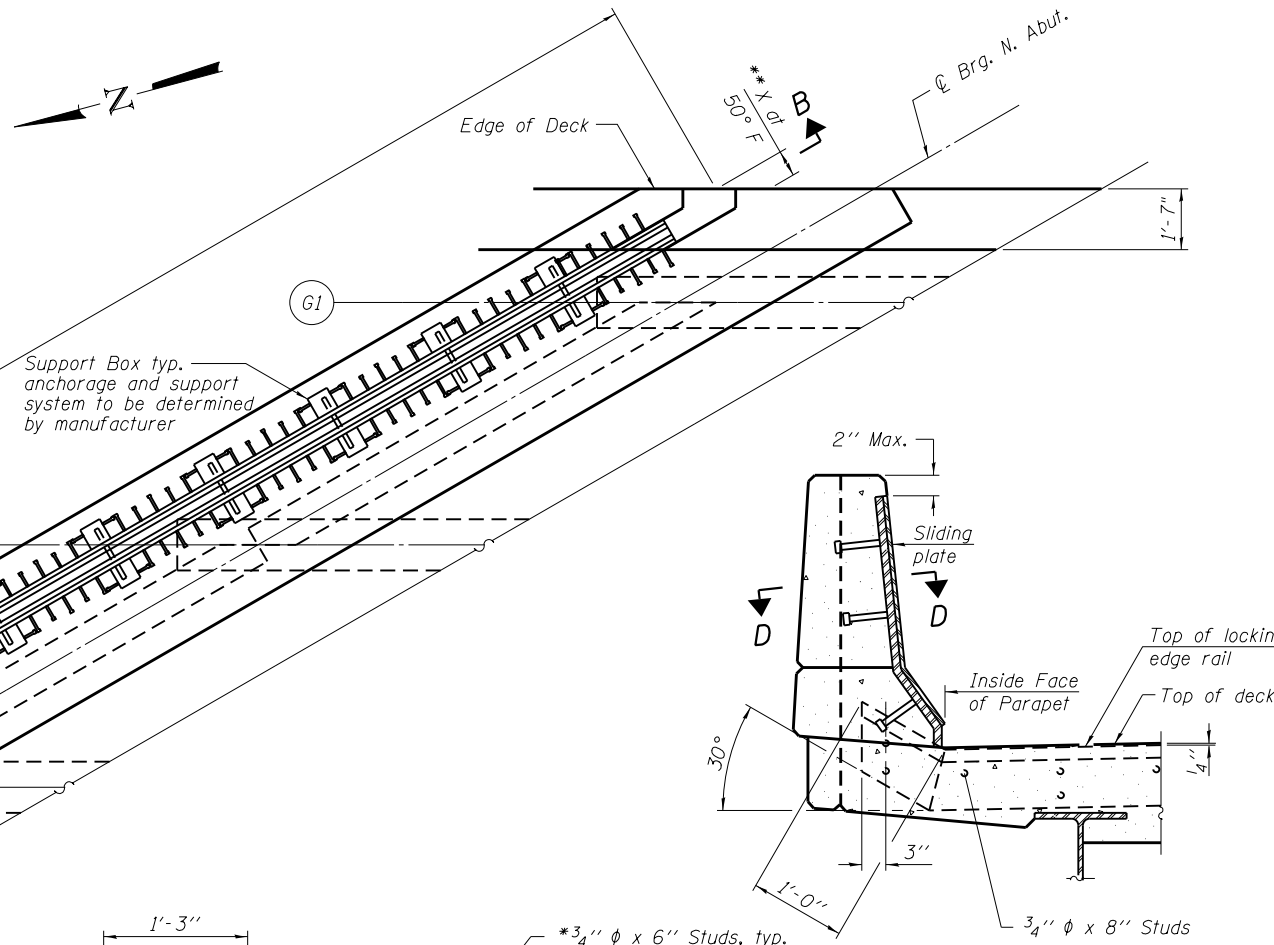


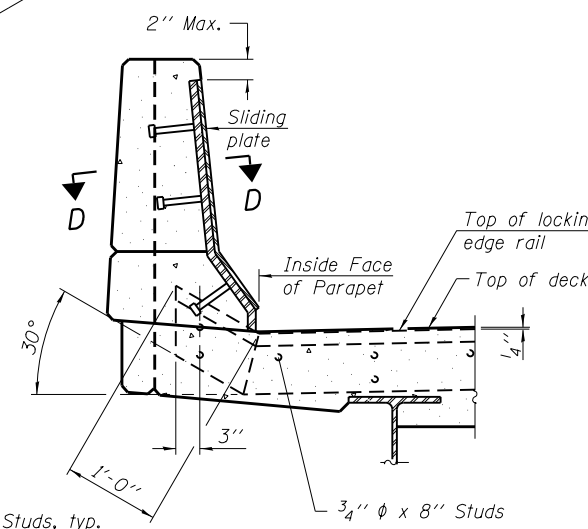
SECTION A-A

Reinforcing not shown for clarity.

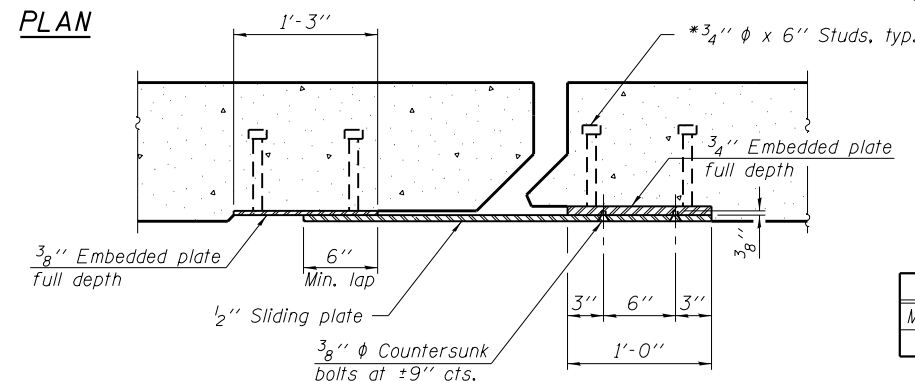
- * Support box shall be rigidly attached to diaphragm by adjustable brackets, stools or shims.
- ** Dimension X and no. of rails is determined by manufacturer. A dimension of 8 1/2" was assumed for detailing of structure.
- *** Blockout dimension to be verified by Contractor with manufacturer.



PLAN



SECTION C-C

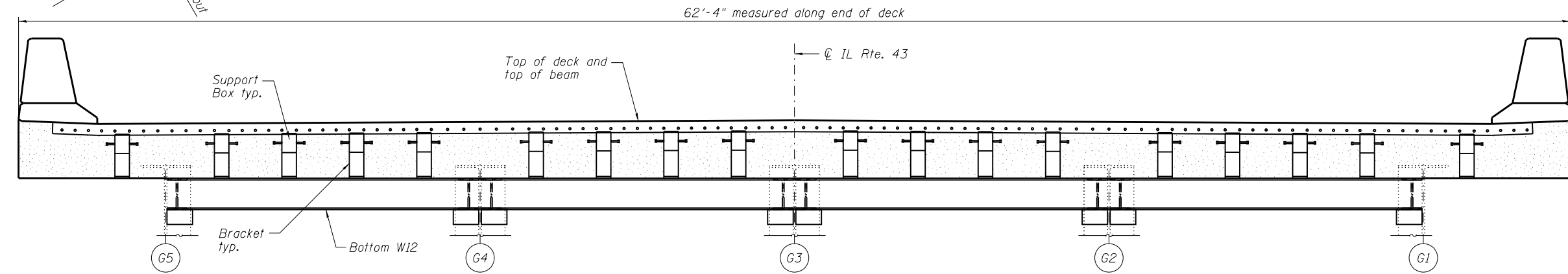


SECTION D-D

BILL OF MATERIAL

Item	Unit	Total
Modular Expansion Joint, 6"	Foot	62.5

Notes:
 Anchorage and support system shall be determined by manufacturer.
 Modular expansion joints shall be assembled in their final relative position with the ends in place for shop inspection and acceptance.
 For deck reinforcing see sheets S9 & S10 of S24.
 For isometric view of joint see sheet S15 of S24.



SECTION B-B

COLLINS ENGINEERS
 123 North Wacker Drive
 Suite 300
 Chicago, IL 60606
 (312) 704-9300
 www.collinsengr.com
 ILLINOIS PROFESSIONAL DESIGN FIRM LICENSE NO. 184-009953

USER NAME =	DESIGNED - AMS	REVISED -
PLOT SCALE =	CHECKED - JMS	REVISED -
PLOT DATE	DRAWN - DR	REVISED -
	CHECKED - AMS	REVISED -

**STATE OF ILLINOIS
 DEPARTMENT OF TRANSPORTATION**

**MODULAR EXPANSION JOINT
 STRUCTURE NO. 049-0087**

SHEET NO. S16 OF S24 SHEETS

F.A.U. RTE.	SECTION	COUNTY	TOTAL SHEETS	SHEET NO.
2706	125HB-BR	LAKE	51	33
CONTRACT NO. 60R61				

ILLINOIS FED. AID PROJECT