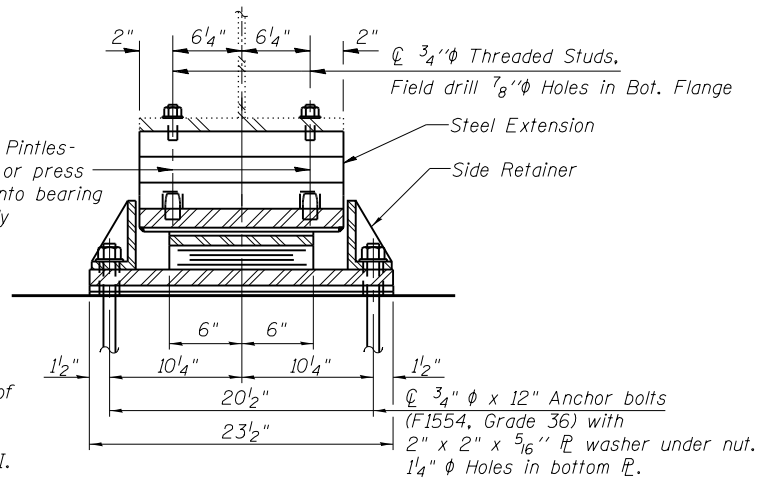


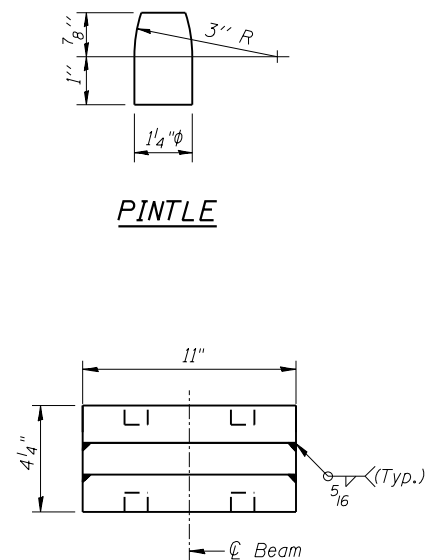
ELEVATION AT ABUT.

TYPE II ELASTOMERIC EXP. BRG.

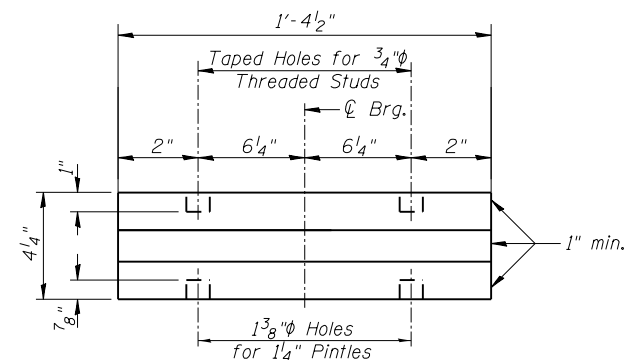
No. Required = 5



SECTION A-A

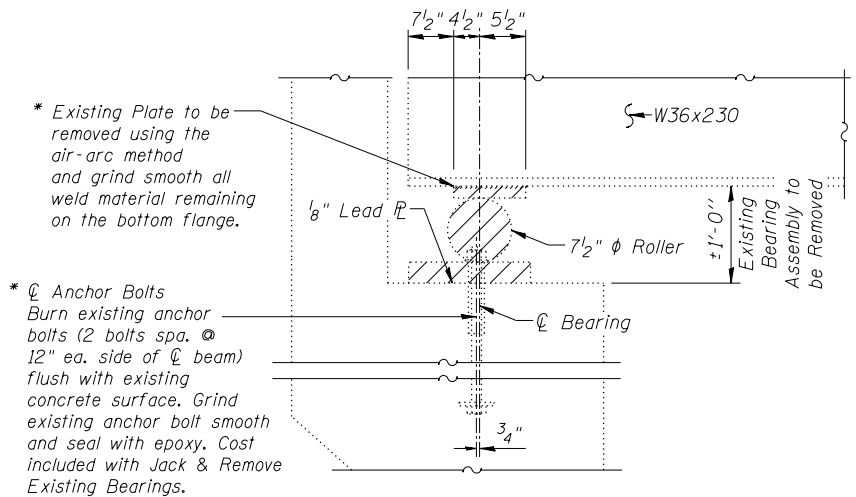


END VIEW STEEL EXTENSION



ELEVATION STEEL EXTENSION

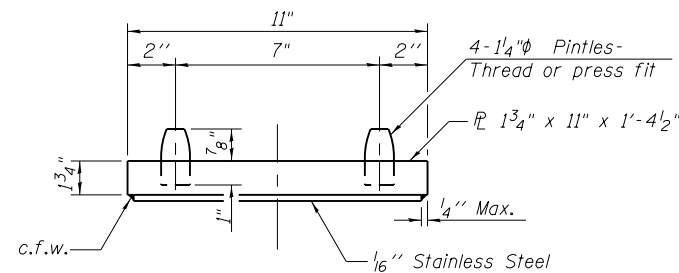
(5 Required)  
Weight included with Furnishing and Erecting Structural Steel.



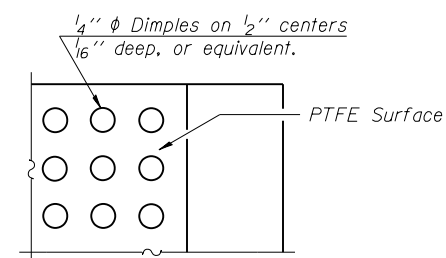
EXIST. ABUTMENT BEARINGS TO BE REMOVED

BILL OF MATERIAL

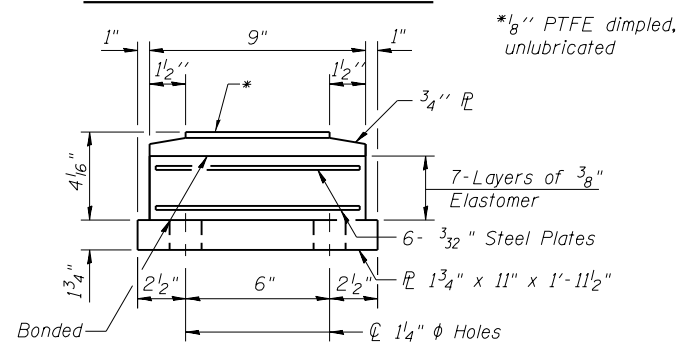
Item	Unit	Total
Elastomeric Bearing Assembly, Type II	Each	5
Jack & Remove Exist. Bearings	Each	5
Anchor Bolts, $\frac{3}{4}$ "	Each	20
Furnishing and Erecting Structural Steel	Pound	1120



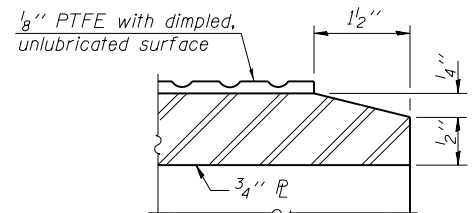
TOP BEARING ASSEMBLY



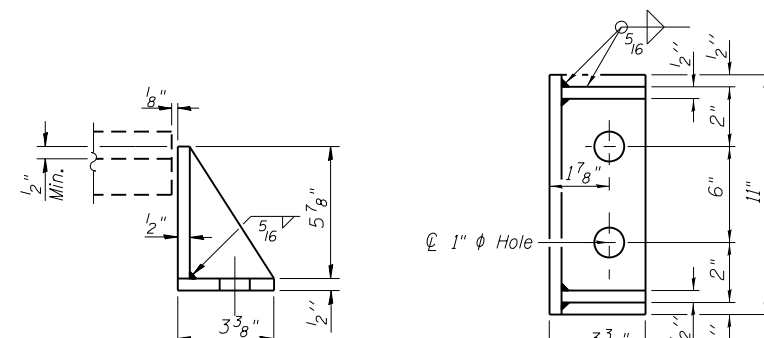
PLAN-PTFE SURFACE



BOTTOM BEARING ASSEMBLY

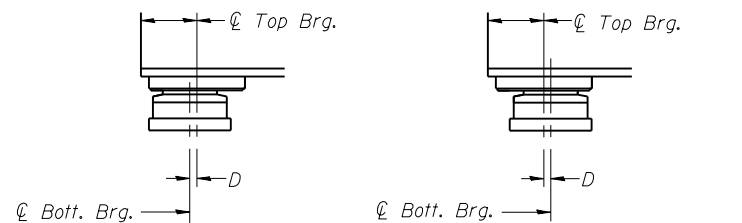


SECTION THRU PTFE



SIDE RETAINER

Equivalent rolled angle with stiffeners will be allowed in lieu of welded plates.



BELOW 50°F.

ABOVE 50°F.

(Move bott. brg. away from fixed brg.) (Move bott. brg. toward fixed brg.)

SETTING ANCHOR BOLTS AT EXP. BRG.

D = 1/8" per each 100' of expansion for every 15° temp. change from the normal temp. of 50°F.

NOTES - JACK AND REMOVE EXIST. BEARING

- The work shall be done in accordance with the special provision "Jack and Remove Existing Bearings."
- Jacking and removing existing bearings, including top and bottom plates and lead plates, shall be done after deck removal is completed and before the new deck is poured. Minimum Jack size = 10 tons. R<sub>Steel</sub> = 7 kips
- The new bearings shall be in place and the jacks shall be lowered before the new deck is poured.
- Cost of field drilling holes in bottom flanges is included with Jack & Remove Exist. Bearing.

Notes:

Anchor bolts shall be ASTM F1554 all-thread (or an Engineer-approved alternate material) of the grade(s) and diameter(s) specified. The corresponding specified grade of AASHTO M314 anchor bolts may be used in lieu of ASTM F1554.

Anchor bolts for Type II bearings shall be placed in holes drilled in the concrete through holes in the bottom bearing plate after members are in place. Side retainers shall be placed after bolts are installed.

Drilled and set anchor bolts shall be installed according to Article 521.06 of the Standard Specifications.

Side retainers and other steel members required for the elastomeric bearing assembly shall be included in the cost of Elastomeric Bearing Assembly, Type II.

The 1/8" PTFE sheet shall be bonded directly to the top steel plate with a two-component, medium viscosity epoxy resin, conforming to the requirements of the Federal Specification MMM-A-134, Type I. The bond agent shall be applied on the full area of the contact surfaces.

Bonding of 1/8" PTFE sheet during vulcanizing process will be permitted provided the process and method of adjusting assembly height is approved by the Engineer.

Two 1/8 in. adjusting shims shall be provided for each bearing in addition to all other plates or shims and placed as shown on bearing details.

Weight of steel extensions is included with Furnishing and Erecting Structural Steel.

The overall depth dimension for the new bearing and steel extension shall match the total depth of the replaced existing bearing. The Contractor shall field verify existing dimensions before ordering material.