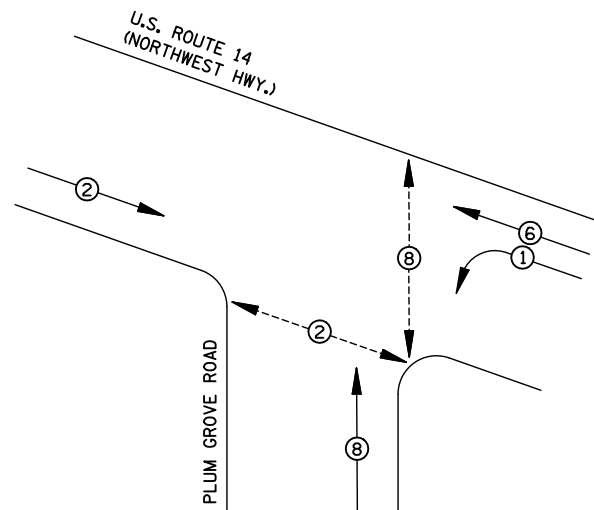
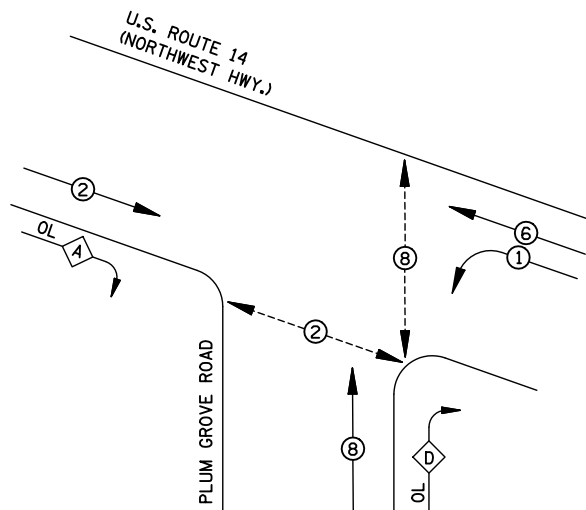


**EXISTING CONTROLLER SEQUENCE**



**EXISTING PHASE DESIGNATION DIAGRAM**

**PROPOSED CONTROLLER SEQUENCE**



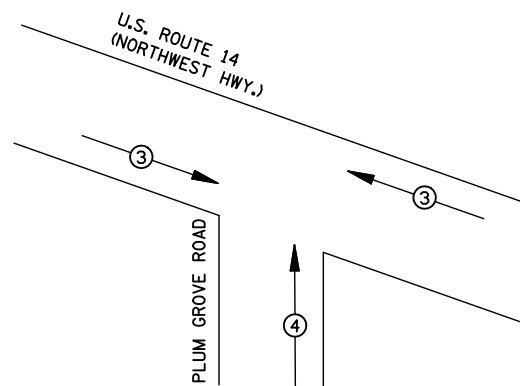
**PROPOSED PHASE DESIGNATION DIAGRAM**

**RIGHT TURN OVERLAP DESIGNATION**

OVERLAP LETTER	PERMISSIVE PHASE	PROTECTED PHASE
A	= 2	+ 8
D	= 8	+ 1

**SCHEDULE OF QUANTITIES**

ITEM	UNIT	QUANTITY
TOPSOIL FURNISH AND PLACE, 4"	SQ YD	6.4
SODDING, SALT TOLERANT	SQ YD	6.4
PORTLAND CEMENT CONCRETE SIDEWALK 5 INCH	SQ FT	257
DETECTABLE WARNINGS	SQ FT	67
COMBINATION CURB AND GUTTER REMOVAL	FOOT	10
SIDEWALK REMOVAL	SQ FT	260
COMBINATION CONCRETE CURB AND GUTTER B-6.24	FOOT	10
SIGN PANEL, TYPE 1	SQ FT	15
REMOVE SIGN PANEL - TYPE 1	SQ FT	24
RELOCATE SIGN PANEL - TYPE 1	SQ FT	24
THERMOPLASTIC PAVEMENT MARKING - LINE 6"	FOOT	314
PAVEMENT MARKING REMOVAL	SQ FT	157
UNDERGROUND CONDUIT, GALVANIZED STEEL, 3" DIA.	FOOT	66
MAINTENANCE OF EXISTING TRAFFIC SIGNAL INSTALLATION	EACH	1
ELECTRIC CABLE IN CONDUIT, SIGNAL NO. 14 2C	FOOT	362
ELECTRIC CABLE IN CONDUIT, SIGNAL NO. 14 3C	FOOT	672
ELECTRIC CABLE IN CONDUIT, SIGNAL NO. 14 5C	FOOT	740
ELECTRIC CABLE IN CONDUIT, SIGNAL NO. 14 7C	FOOT	885
ELECTRIC CABLE IN CONDUIT, EQUIPMENT GROUNDING CONDUCTOR, NO. 6 1C	FOOT	95
STEEL MAST ARM ASSEMBLY AND POLE, 24 FT.	EACH	2
STEEL MAST ARM ASSEMBLY AND POLE, 36 FT.	EACH	1
CONCRETE FOUNDATION, TYPE E 30-INCH DIAMETER	FOOT	20
CONCRETE FOUNDATION, TYPE E 36-INCH DIAMETER	FOOT	11
DRILL EXISTING HANDHOLE	EACH	3
SIGNAL HEAD, LED, 1-FACE, 3-SECTION, MAST-ARM MOUNTED	EACH	4
SIGNAL HEAD, LED, 1-FACE, 3-SECTION, BRACKETMOUNTED	EACH	1
SIGNAL HEAD, LED, 1-FACE, 5-SECTION, MAST-ARM MOUNTED	EACH	4
SIGNAL HEAD, LED, 2-FACE, 3 SECTION, BRACKET MOUNTED	EACH	1
SIGNAL HEAD, LED, 2-FACE, 5-SECTION, BRACKET MOUNTED	EACH	1
PEDESTRIAN SIGNAL HEAD, LED, 1-FACE, BRACKET MOUNTED WITH COUNTDOWN TIMER	EACH	2
PEDESTRIAN SIGNAL HEAD, LED, 2-FACE, BRACKET MOUNTED WITH COUNTDOWN TIMER	EACH	1
TRAFFIC SIGNAL BACKPLATE, LOUVERED, ALUMINUM	EACH	8
PEDESTRIAN PUSH BUTTON	EACH	4
RELOCATE EXISTING EMERGENCY VEHICLE PRIORITY SYSTEM, DETECTOR UNIT	EACH	2
MODIFY EXISTING CONTROLLER	EACH	1
MODIFY EXISTING CONTROLLER CABINET	EACH	1
REMOVE ELECTRIC CABLE FROM CONDUIT	FOOT	2468
REMOVE EXISTING TRAFFIC SIGNAL EQUIPMENT	EACH	1
REMOVE EXISTING CONCRETE FOUNDATION	EACH	4
EMERGENCY VEHICLE PRIORITY SYSTEM LINE SENSOR CABLE, NO. 20 3/C	FOOT	289
UNINTERRUPTIBLE POWER SUPPLY, SPECIAL	EACH	1
100% COST TO THE VILLAGE OF PALATINE		



PROPOSED EMERGENCY VEHICLE PREEMPTORS		
EMERGENCY VEHICLE PREEMPTOR	3	4
MOVEMENT	→	↑

**EXISTING AND PROPOSED EMERGENCY VEHICLE PREEMPTION SEQUENCE**

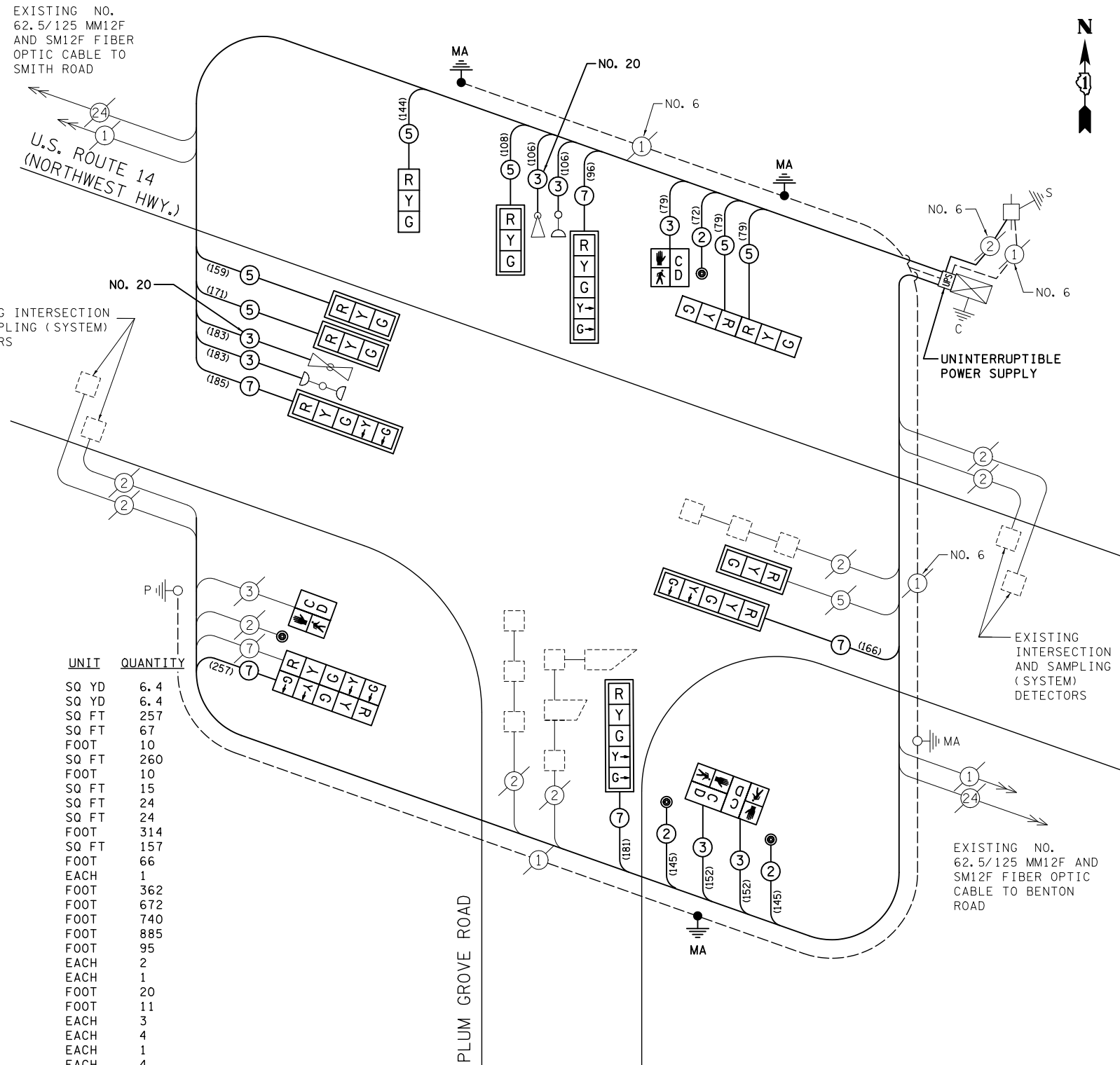
I.D.O.T. TRAFFIC SIGNAL INSTALLATION ELECTRICAL SERVICE REQUIREMENTS					TOTAL WATTAGE
TYPE	NO. LAMPS	WATTAGE INCAND.	LED	%OPERATION	
SIGNAL (RED)	13	135	17	0.50	110.5
(YELLOW)	13	135	25	0.25	81.3
(GREEN)	13	135	15	0.25	48.8
ARROW	12	135	12	0.10	14.4
PED. SIGNAL	6	90	25	1.00	150
CONTROLLER	1	100	100	1.00	100
ILLUM. SIGN		84		0.05	
FLASHER		135	25	0.50	

ENERGY COSTS TO: TOTAL = 505  
 ILLINOIS DEPARTMENT OF TRANSPORTATION  
 201 W. CENTER COURT  
 SCHAUMBURG, IL 60196  
 ENERGY SUPPLY CONTACT: DAVE SCHACHT  
 PHONE: 1-(630) 847-2129  
 COMPANY: COMED

FILE NAME = \MICROST\352103\ US 14 @ PLUM CAB.DGN	USER NAME = JGC	DESIGNED - KK	REVISED -
		DRAWN - RDS/JGC	REVISED -
		PLOT SCALE = 1"=20'	CHECKED - BPT
		PLOT DATE = 03-07-13	DATE - 03-07-13

EXISTING NO. 62.5/125 MM12F AND SM12F FIBER OPTIC CABLE TO SMITH ROAD

EXISTING INTERSECTION AND SAMPLING (SYSTEM) DETECTORS



**CABLE PLAN**

NOTE: (XXX) DENOTES CABLE LENGTH TO CONTROLLER CABINET WITH SLACK CABLE.

STATE OF ILLINOIS DEPARTMENT OF TRANSPORTATION

SCHEDULE OF QUANTITIES, CABLE PLAN AND PHASE DESIGNATION DIAGRAM			
U.S. ROUTE 14 (NORTHWEST HWY.) AT PLUM GROVE ROAD			
SCALE: N.T.S.	SHEET NO.	OF SHEETS	STA. TO STA.

PREPARED BY:  
**CEMCON, Ltd.**  
 Consulting Engineers, Land Surveyors & Planners  
 2280 White Oak Circle, Suite 100  
 Aurora, Illinois 60504-9675  
 Ph: 630.862.2100 Fax: 630.862.2199  
 E-Mail: cadd@cemcon.com Website: www.cemcon.com

F.A.U. RTE.	SECTION	COUNTY	TOTAL SHEETS	SHEET NO.
305	2012-042 TS	COOK	36	20
				CONTRACT NO. 60T90
FED. ROAD DIST. NO. ILLINOIS FED. AID PROJECT				

TS# 1315