

CURVE 30-1  
 PI STA. = 1253+78.51  
 $\Delta = 54^\circ 56' 33''$  (RT)  
 D = 2° 00' 15"  
 R = 2,859.00'  
 T = 1,486.48'  
 L = 2,741.57'  
 E = 363.34'  
 e = 3.5%  
 T.R. = 54'  
 S.E. RUN = 126'  
 P.C. STA. = 1238+92.03  
 P.T. STA. = 1266+33.60  
 DS=50 MPH; PS=45 MPH

CURVE 30-2  
 PI STA. = 1275+69.60  
 $\Delta = 0^\circ 51' 19''$  (RT)  
 D = 0° 25' 28"  
 R = 13,500.00'  
 T = 100.75'  
 L = 201.50'  
 E = 0.38'  
 e = normal crown  
 T.R. = N/A  
 S.E. RUN = N/A  
 P.C. STA. = 1274+68.85  
 P.T. STA. = 1276+70.35  
 DS=50 MPH; PS=45 MPH

CURVE NB31-1  
 PI STA. = 106+18.14  
 $\Delta = 24^\circ 53' 49''$  (RT)  
 D = 2° 02' 46"  
 R = 2,800.16'  
 T = 618.14'  
 L = 1,216.77'  
 E = 67.42'  
 e = 2.0% (EX.)  
 T.R. = N/A  
 S.E. RUN = N/A  
 P.C. STA. = 100+00.00  
 P.T. STA. = 112+16.77  
 DS=50 MPH; PS=45 MPH

CURVE NB31-2  
 PI STA. = 118+12.62  
 $\Delta = 26^\circ 49' 55''$  (LT)  
 D = 3° 49' 10"  
 R = 1,500.08'  
 T = 357.81'  
 L = 702.50'  
 E = 42.08'  
 e = 2.0%  
 T.R. = N/A  
 S.E. RUN = N/A  
 P.C. STA. = 114+54.81  
 P.T. STA. = 121+57.31  
 DS=50 MPH; PS=45 MPH

CURVE NB31-3  
 PI STA. = 126+57.31  
 $\Delta = 7^\circ 13' 11''$  (LT)  
 D = 2° 32' 47"  
 R = 2,250.12'  
 T = 141.95'  
 L = 283.53'  
 E = 4.47'  
 e = 2.0%  
 T.R. = 51'  
 S.E. RUN = 69'  
 P.C. STA. = 125+15.35  
 P.T. STA. = 127+98.89  
 DS=50 MPH; PS=45 MPH

CURVE NB31-4  
 PI STA. = 131+33.82  
 $\Delta = 2^\circ 01' 38''$  (LT)  
 D = 0° 34' 23"  
 R = 10,000.55'  
 T = 176.94'  
 L = 353.84'  
 E = 1.57'  
 e = 2.0% (EX.)  
 T.R. = N/A  
 S.E. RUN = N/A  
 P.C. STA. = 129+56.89  
 P.T. STA. = 133+10.72  
 DS=50 MPH; PS=45 MPH

CURVE SB31-1  
 PI STA. = 206+05.93  
 $\Delta = 26^\circ 14' 15''$  (RT)  
 D = 2° 12' 13"  
 R = 2,600.00'  
 T = 605.93'  
 L = 1,190.62'  
 E = 69.67'  
 e = 2.0% (EX.)  
 T.R. = N/A  
 S.E. RUN = N/A  
 P.C. STA. = 200+00.00  
 P.T. STA. = 211+90.62  
 DS=50 MPH; PS=45 MPH

CURVE SB31-2  
 PI STA. = 215+20.99  
 $\Delta = 8^\circ 57' 52''$  (LT)  
 D = 1° 54' 24"  
 R = 3,005.00'  
 T = 235.56'  
 L = 470.16'  
 E = 9.22'  
 e = 2.0% (EX.)  
 T.R. = N/A  
 S.E. RUN = N/A  
 P.C. STA. = 212+85.43  
 P.T. STA. = 217+55.59  
 DS=50 MPH; PS=45 MPH

CURVE SB31-3  
 PI STA. = 219+75.68  
 $\Delta = 17^\circ 52' 06''$  (LT)  
 D = 4° 05' 33"  
 R = 1,400.00'  
 T = 220.09'  
 L = 436.61'  
 E = 17.19'  
 e = 2.0%  
 T.R. = N/A  
 S.E. RUN = N/A  
 P.C. STA. = 217+55.59  
 P.T. STA. = 221+92.20  
 DS=50 MPH; PS=45 MPH

CURVE SB31-4  
 PI STA. = 226+53.89  
 $\Delta = 7^\circ 13' 11''$  (LT)  
 D = 2° 34' 01"  
 R = 2,232.12'  
 T = 140.82'  
 L = 281.26'  
 E = 4.44'  
 e = 2.0%  
 T.R. = N/A  
 S.E. RUN = N/A  
 P.C. STA. = 225+13.07  
 P.T. STA. = 227+94.34  
 DS=50 MPH; PS=45 MPH

ALIGNMENT COORDINATES - ILL. RTE. 31 (NB)			
31NB	STATION	N	E
POB	100+00.00	1,841,125.40	978,580.31
PI	106+18.14	1,841,650.50	978,906.45
PT	112+16.77	1,841,989.50	979,423.34
PC	114+54.81	1,842,120.05	979,622.39
PI	118+12.62	1,842,316.28	979,921.59
PT	121+57.31	1,842,626.44	980,100.01
PC	125+15.35	1,842,936.80	980,278.53
PI	126+57.31	1,843,059.85	980,349.31
PT	127+98.89	1,843,190.82	980,404.07
PC	129+56.89	1,843,336.59	980,465.01
PI	131+33.82	1,843,499.84	980,533.26
PT	133+10.72	1,843,665.40	980,595.69
POT	140+66.67	1,844,372.72	980,862.42

ALIGNMENT COORDINATES - US RTE. 30			
US30	STATION	N	E
POB	1234+00.00	1,842,464.49	976,309.98
PC	1238+92.03	1,842,639.40	976,769.87
PI	1253+78.51	1,843,167.82	978,159.25
PT	1266+33.60	1,842,334.02	979,389.86
PC	1274+68.85	1,841,865.52	980,081.34
PI	1275+69.60	1,841,809.00	980,164.75
PT	1276+70.35	1,841,751.25	980,247.31
POT	1278+39.48	1,841,654.31	980,385.89
POT	1280+92.96	1,841,510.28	980,594.47

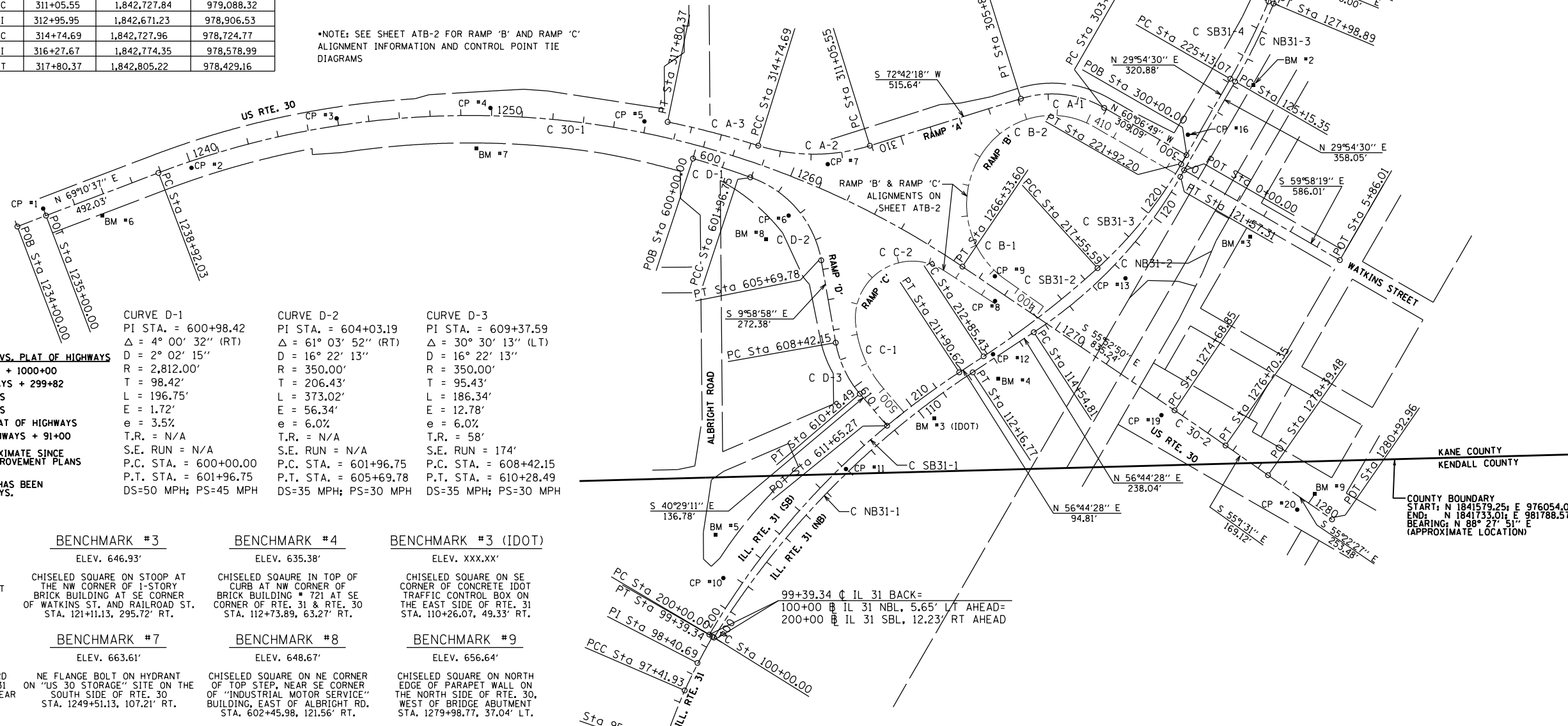
ALIGNMENT COORDINATES - RAMP 'D'			
RAMPD	STATION	N	E
POB	600+00.00	1,842,685.96	978,511.88
PI	600+98.42	1,842,658.66	978,606.44
PCC	601+96.75	1,842,624.80	978,698.85
PI	604+03.19	1,842,557.76	978,894.09
PT	605+69.78	1,842,354.45	978,929.87
PC	608+42.15	1,842,086.20	978,977.09
PI	609+37.59	1,841,992.21	978,993.64
PT	610+28.49	1,841,919.63	979,055.60
POT	611+65.27	1,841,815.60	979,144.40

ALIGNMENT COORDINATES - ILL. RTE. 31 (SB)			
31SB	STATION	N	E
POB	200+00.00	1,841,135.08	978,565.26
PI	206+05.93	1,841,657.15	978,872.83
PT	211+90.62	1,841,989.46	979,379.51
PC	212+85.43	1,842,041.46	979,458.80
PI	215+20.99	1,842,170.64	979,655.77
PCC	217+55.59	1,842,328.95	979,830.21
PI	219+75.68	1,842,476.85	979,993.20
PT	221+92.20	1,842,667.63	980,102.94
PC	225+13.07	1,842,945.78	980,262.93
PI	226+53.89	1,843,067.84	980,333.14
PT	227+94.34	1,843,197.76	980,387.46
PC	229+89.11	1,843,377.47	980,462.59
PI	232+09.53	1,843,580.83	980,547.61
PT	234+29.88	1,843,787.73	980,623.58
POT	240+61.34	1,844,380.50	980,841.25

ALIGNMENT COORDINATES - RAMP 'A'			
RAMPA	STATION	N	E
POB	300+00.00	1,842,697.18	980,119.93
PC	303+09.09	1,842,851.20	979,851.95
PI	304+58.02	1,842,925.40	979,722.83
PT	305+89.91	1,842,881.13	979,580.64
PC	311+05.55	1,842,727.84	979,088.32
PI	312+95.95	1,842,671.23	978,906.53
PCC	314+74.69	1,842,727.96	978,724.77
PI	316+27.67	1,842,774.35	978,578.99
PT	317+80.37	1,842,805.22	978,429.16

ALIGNMENT COORDINATES - WATKINS STREET			
WATKINS	STATION	N	E
POB	0+00.00	1,842,648.30	980,112.58
POT	5+86.01	1,842,355.04	980,619.93

\*NOTE: SEE SHEET ATB-2 FOR RAMP 'B' AND RAMP 'C' ALIGNMENT INFORMATION AND CONTROL POINT TIE DIAGRAMS

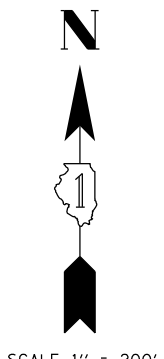


CURVE D-1  
 PI STA. = 600+98.42  
 $\Delta = 4^\circ 00' 32''$  (RT)  
 D = 2° 02' 15"  
 R = 2,812.00'  
 T = 98.42'  
 L = 196.75'  
 E = 1.72'  
 e = 3.5%  
 T.R. = N/A  
 S.E. RUN = N/A  
 P.C. STA. = 600+00.00  
 P.T. STA. = 601+96.75  
 DS=50 MPH; PS=45 MPH

CURVE D-2  
 PI STA. = 604+03.19  
 $\Delta = 61^\circ 03' 52''$  (RT)  
 D = 16° 22' 13"  
 R = 350.00'  
 T = 206.43'  
 L = 373.02'  
 E = 56.34'  
 e = 6.0%  
 T.R. = N/A  
 S.E. RUN = N/A  
 P.C. STA. = 601+96.75  
 P.T. STA. = 605+69.78  
 DS=35 MPH; PS=30 MPH

CURVE D-3  
 PI STA. = 609+37.59  
 $\Delta = 30^\circ 30' 13''$  (LT)  
 D = 16° 22' 13"  
 R = 350.00'  
 T = 95.43'  
 L = 186.34'  
 E = 12.78'  
 e = 6.0%  
 T.R. = 58'  
 S.E. RUN = 174'  
 P.C. STA. = 608+42.15  
 P.T. STA. = 610+28.49  
 DS=35 MPH; PS=30 MPH

- STATION EQUATIONS FOR IMPROVEMENT PLANS VS. PLAT OF HIGHWAYS**
- US 30 PLANS = US 30 PLAT OF HIGHWAYS + 1000+00
  - RAMP A PLANS = RAMP A PLAT OF HIGHWAYS + 299+82
  - RAMP B NOT INCLUDED ON PLAT OF HIGHWAYS
  - RAMP C NOT INCLUDED ON PLAT OF HIGHWAYS
  - RAMP D PLANS DOES NOT EQUAL RAMP D PLAT OF HIGHWAYS
  - NB IL 31 PLANS = NB IL 31 PLAT OF HIGHWAYS + 91+00
- STATION EQUATION FOR US 30 IS APPROXIMATE SINCE BEARINGS, PCS, PTS, AND RADII SHOWN ON IMPROVEMENT PLANS AND PLAT OF HIGHWAYS DIFFER SLIGHTLY.**
- OF RAMP D SHOWN ON IMPROVEMENT PLANS HAS BEEN MODIFIED SINCE ISSUANCE OF PLAT OF HIGHWAYS.**



BENCHMARK #1	BENCHMARK #2	BENCHMARK #3	BENCHMARK #4	BENCHMARK #3 (IDOT)
ELEV. 642.92'	ELEV. 641.96'	ELEV. 646.93'	ELEV. 635.38'	ELEV. XXX.XX'
CHISELED "L" ON THE NORTHEAST CORNER OF DISPLAY RAMP AT THE SOUTHWEST CORNER OF RTE. 31 & WEBSTER STREET STA. 139+13.03, 114.83' RT.	RR SPIKE IN FIFTH POWER POLE NORTH OF CASE STREET ON EAST SIDE RTE. 31 STA. 125+33.57, 56.96' RT.	CHISELED SQUARE ON STOOP AT THE NW CORNER OF 1-STORY BRICK BUILDING AT SE CORNER OF WATKINS ST. AND RAILROAD ST. STA. 121+11.13, 295.72' RT.	CHISELED SQUARE IN TOP OF CURB AT NW CORNER OF BRICK BUILDING # 721 AT SE CORNER OF RTE. 31 & RTE. 30 STA. 112+73.89, 63.27' RT.	CHISELED SQUARE ON SE CORNER OF CONCRETE IDOT TRAFFIC CONTROL BOX ON THE EAST SIDE OF RTE. 31 STA. 110+26.07, 49.33' RT.
BENCHMARK #5	BENCHMARK #6	BENCHMARK #7	BENCHMARK #8	BENCHMARK #9
ELEV. 657.89'	ELEV. 661.25'	ELEV. 663.61'	ELEV. 648.67'	ELEV. 656.64'
CHISELED SQUARE ON CONCRETE SLAB IN FRONT OF HOUSE #8 AT NW CORNER OF ALBRIGHT RD. AND ILL. RTE. 31 STA. 202+73.16, 163.83' LT.	RAILROAD SPIKE IN THE THIRD POWER POLE WEST OF RTE. 31 ON SOUTH SIDE OF RTE. 30, NEAR HOUSE #13 PASADENA DR. STA. 1236+71.23, 65.49' RT.	NE FLANGE BOLT ON HYDRANT ON "US 30 STORAGE" SITE ON THE SOUTH SIDE OF RTE. 30 STA. 1249+51.13, 107.21' RT.	CHISELED SQUARE ON NE CORNER OF "INDUSTRIAL MOTOR SERVICE" BUILDING, EAST OF ALBRIGHT RD. STA. 602+45.98, 121.56' RT.	CHISELED SQUARE ON NORTH EDGE OF PARAPET WALL ON THE NORTH SIDE OF RTE. 30, WEST OF BRIDGE ABUTMENT STA. 1279+98.77, 37.04' LT.

STATE OF ILLINOIS  
 DEPARTMENT OF TRANSPORTATION

WATKINS STREET AT IL ROUTE 31  
 ALIGNMENTS, TIES, AND BENCHMARKS

F.A.U. RTE.	SECTION	COUNTY	TOTAL SHEETS	SHEET NO.
3902	12R-N	KANE	92	20
CONTRACT NO. 60V53				
ILLINOIS FED. AID PROJECT				

P:\162520\2010\3033\cadd\site\ogd\10\162520\31-atb-01.dgn  
 5/16/2013 2:55:07 PM