

INDEX OF SHEETS  
SEE SHEET NO. 2

STATE OF ILLINOIS  
DEPARTMENT OF TRANSPORTATION  
DIVISION OF HIGHWAYS

**PROPOSED  
HIGHWAY PLANS**

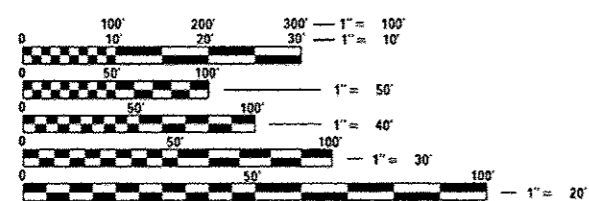
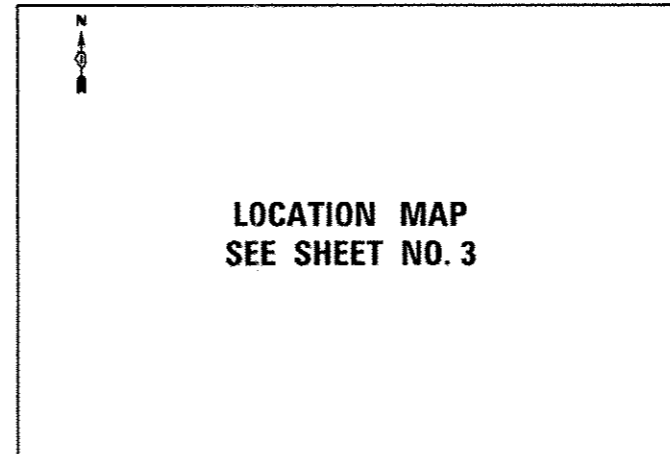
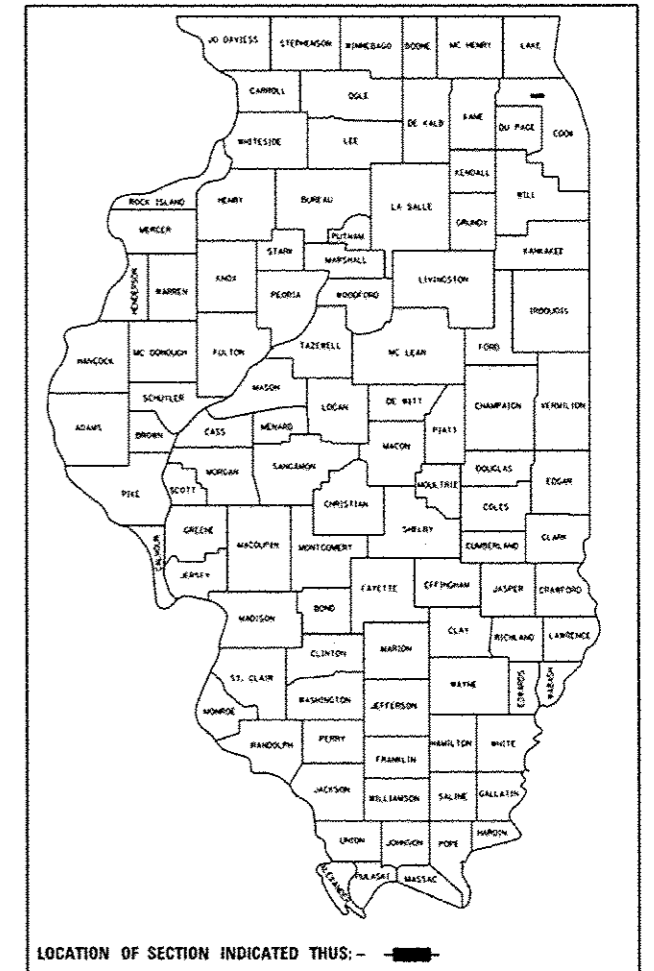
VARIOUS LOCATIONS IN  
NORTHWEST COOK COUNTY, CONTRACT #1  
**LIGHT EMITTING DIODE (LED) INSTALLATION**  
SECTION 2013-005-1  
COOK COUNTY  
C-91-218-13

F.U.L. RTE. VAR	SECTION 2013-005-1	COUNTY COOK	TOTAL SHEETS *85	SHEET NO. 1
ILLINOIS			CONTRACT NO. 60W23	

\*85 + 14 = 99

**IDOT STANDARDS**

- 701006-04 OFF-ROAD OPERATIONS, 2L, 2W, 15' TO 24" FROM PAVEMENT EDGE
- 701011-03 OFF-ROAD OPERATIONS, MULTILANE, 15' TO 24" FROM PAVEMENT EDGE
- 701701-08 URBAN LANE CLOSURE, MULTILANE INTERSECTION
- 701901-02 TRAFFIC CONTROL DEVICES
- 720001-01 SIGN PANEL MOUNTING DETAILS
- 857001-01 STANDARD PHASE DESIGNATION DIAGRAMS AND PHASE SEQUENCES
- 862001-01 UNINTERRUPTABLE POWER SUPPLY (UPS)
- 880006-01 TRAFFIC SIGNAL MOUNTING DETAILS



FULL SIZE PLANS HAVE BEEN PREPARED USING STANDARD ENGINEERING SCALES. REDUCED SIZED PLANS WILL NOT CONFORM TO STANDARD SCALES. IN MAKING MEASUREMENTS ON REDUCED PLANS, THE ABOVE SCALES MAY BE USED.

J.U.L.I.E.  
JOINT UTILITY LOCATION INFORMATION FOR EXCAVATION  
1-800-892-0123  
OR 811

PROJECT ENGINEER: SHAR-DAY SMITH  
PROJECT MANAGER: SUDUD MAHMOUD

CONTRACT NO. 60W23



Signed Jeffrey A. Meindl  
JEFFREY A. MEINDL, P.E., IL License No. 062-054021  
Expires 11/30/2013  
Date 5-15-13

STATE OF ILLINOIS  
DEPARTMENT OF TRANSPORTATION  
DIVISION OF HIGHWAYS

SUBMITTED May 17 2013  
John Putman  
DEPUTY DIRECTOR OF HIGHWAYS, REGION ENGINEER

June 28 2013  
John D. Baranzelli, P.E.  
ENGINEER OF DESIGN AND ENVIRONMENT

June 28 2013  
omer osman, P.E.  
DIRECTOR OF HIGHWAYS, CHIEF ENGINEER

PRINTED BY THE AUTHORITY  
OF THE STATE OF ILLINOIS

Rev. 7-18-13