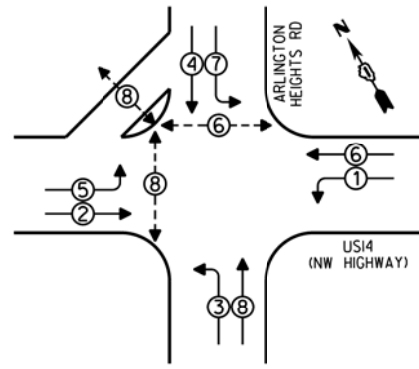


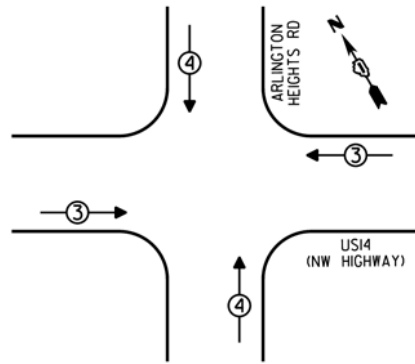
CONTROLLER SEQUENCE



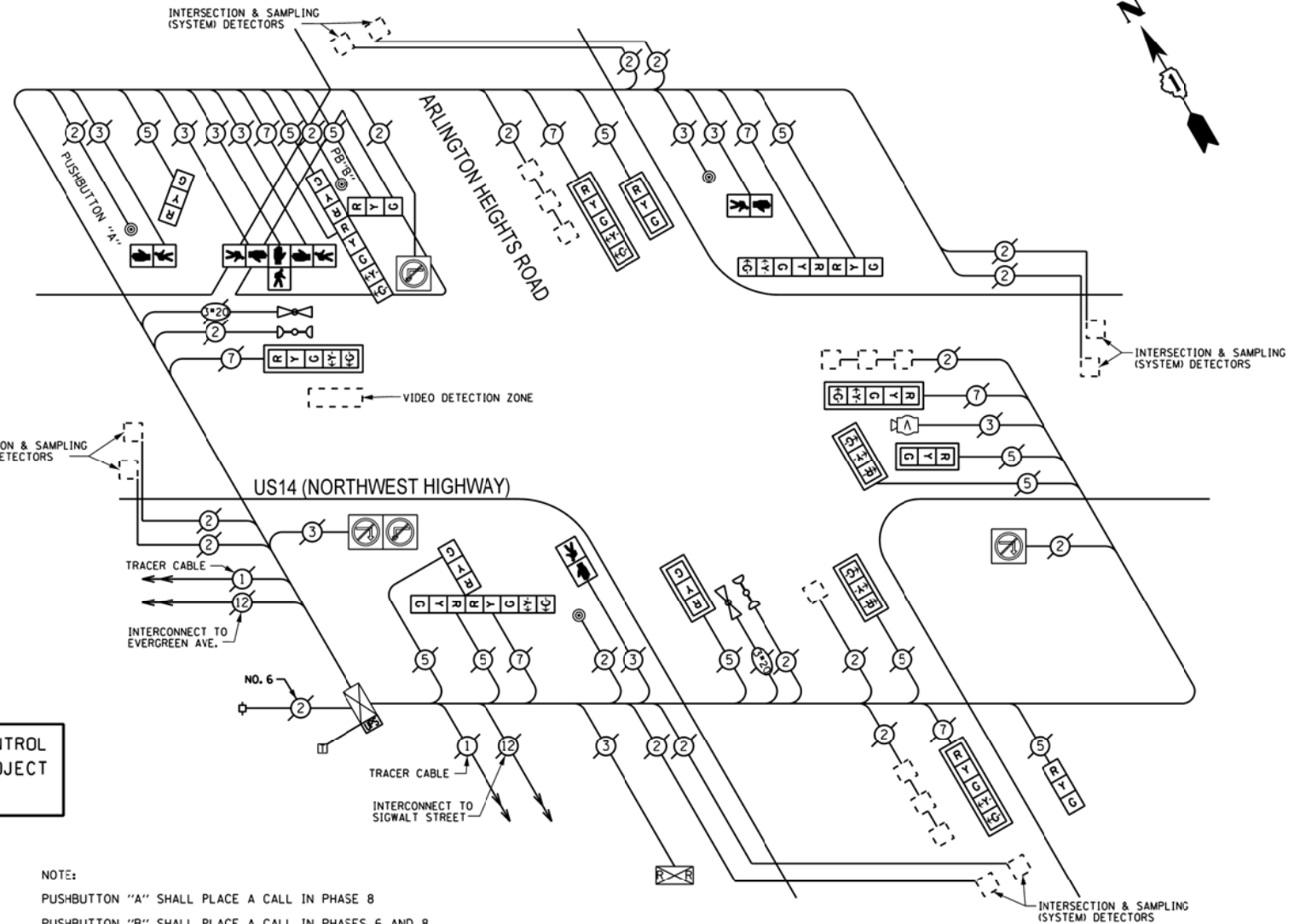
- LEGEND**
- SINGLE ENTRY PHASE
  - DUAL ENTRY PHASE
  - ◇ OVERLAP
  - ⊕ PEDESTRIAN PHASE
  - NUMBER REFERS TO ASSOCIATED PHASE

PHASE DESIGNATION DIAGRAM

EMERGENCY VEHICLE PREEMPTION SEQUENCE



EMERGENCY VEHICLE PREEMPTORS		
EMERGENCY VEHICLE PREEMPTOR	3	4
MOVEMENT	←→	↑↓



THE TRAFFIC SIGNAL CONTROL EQUIPMENT FOR THIS PROJECT SHALL BE "ECONOLITE".

- NOTE:
- PUSHBUTTON "A" SHALL PLACE A CALL IN PHASE 8
  - PUSHBUTTON "B" SHALL PLACE A CALL IN PHASES 6 AND 8

CABLE PLAN

REMOVE EXISTING TRAFFIC SIGNAL EQUIPMENT

THE FOLLOWING ITEMS SHALL BE REMOVED BY THE CONTRACTOR AND SHALL BE DISPOSED OF BY THEM OUTSIDE THE RIGHT-OF-WAY AT THEIR EXPENSE. THE SALVAGE VALUE OF THE REMOVED EQUIPMENT SHALL BE REFLECTED IN THE CONTRACT BID PRICE.

QUANTITY	UNIT	DESCRIPTION
4	EACH	PEDESTRIAN PUSHBUTTON

SCHEDULE OF QUANTITIES

QUAN.	UNIT	ITEM
1	EACH	MAINTENANCE OF EXISTING TRAFFIC SIGNAL INSTALLATION
4	EACH	PEDESTRIAN PUSH-BUTTON
1	EACH	REMOVE EXISTING TRAFFIC SIGNAL EQUIPMENT

I.D.O.T. TRAFFIC SIGNAL INSTALLATION ELECTRICAL SERVICE REQUIREMENTS				TOTAL WATTAGE
TYPE	NO. OF LAMPS	INCAND	LED X % OPERATIONS	
SIGNAL (RED)	19		0.50	161.50
(YELLOW)	19		0.25	118.75
(GREEN)	19		0.25	71.25
ARROW	14		0.10	16.80
PED. SIGNAL	6		1.00	150.00
CONTROLLER	1		100	100.00
ILLUM. SIGN	4		0.05	5.00
LUMINAIRE		250		0.50
VIDEO SYSTEM		150		1.00
FLASHER			0.50	
ENERGY COSTS TO:				TOTAL = 623.30

VILLAGE OF ARLINGTON HEIGHTS  
33 SOUTH ARLINGTON HEIGHTS ROAD  
ARLINGTON HEIGHTS, ILLINOIS 60005

ENERGY SUPPLY - CONTACT: DAVE SCHACHT  
PHONE: (630) 437-2129  
COMPANY: COMED

FILE NAME =	USER NAME = #USER#	DESIGNED -	REVISED -
#FILE#		DRAWN -	REVISED -
	PLOT SCALE = #SCALE#	CHECKED -	REVISED -
#MODELNAME#	PLOT DATE = #DATE#	DATE -	REVISED -

STATE OF ILLINOIS  
DEPARTMENT OF TRANSPORTATION

SCHEDULE OF QUANTITIES, CABLE PLAN, PHASE DESIGNATION  
DIAGRAM, AND EMERGENCY VEHICLE PREEMPTION SEQUENCE,  
US14 (NW HIGHWAY) AT ARLINGTON HEIGHTS ROAD

SCALE: NONE SHEET OF SHEETS STA. TO STA.

F.A. RTE.	SECTION	COUNTY	TOTAL SHEETS	SHEET NO.
VAR	2013-005-1	COOK	85	47
				CONTRACT NO. 60W23
ILLINOIS FED. AID PROJECT				