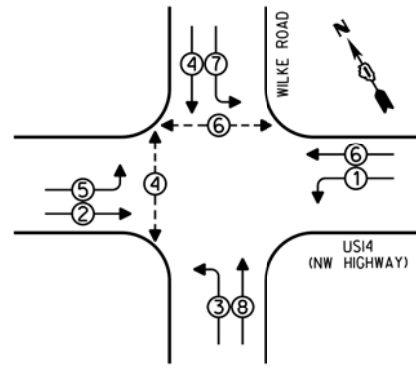
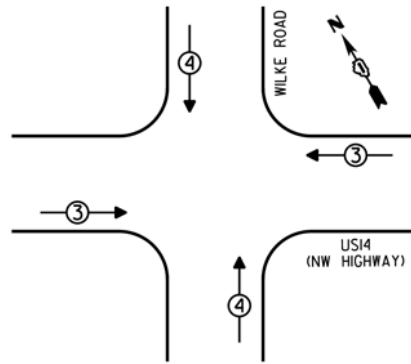


CONTROLLER SEQUENCE



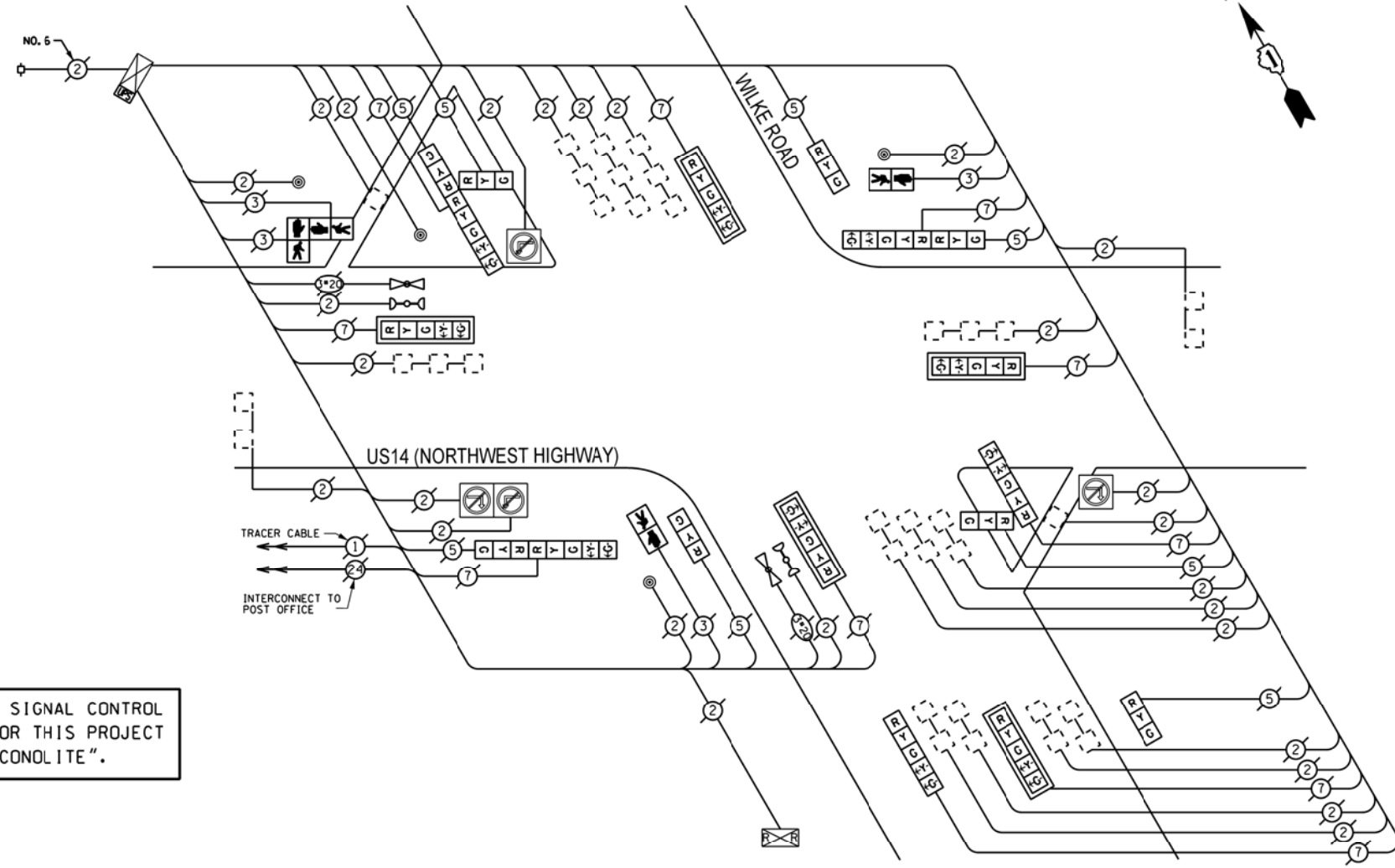
PHASE DESIGNATION DIAGRAM

EMERGENCY VEHICLE PREEMPTION SEQUENCE



| EMERGENCY VEHICLE PREEMPTORS | | |
|------------------------------|----|----|
| EMERGENCY VEHICLE PREEMPTOR | 3 | 4 |
| MOVEMENT | ←→ | ↑↓ |

THE TRAFFIC SIGNAL CONTROL EQUIPMENT FOR THIS PROJECT SHALL BE "ECONOLITE".



CABLE PLAN

REMOVE EXISTING TRAFFIC SIGNAL EQUIPMENT

THE FOLLOWING ITEMS SHALL BE REMOVED BY THE CONTRACTOR AND SHALL BE DISPOSED OF BY THEM OUTSIDE THE RIGHT-OF-WAY AT THEIR EXPENSE. THE SALVAGE VALUE OF THE REMOVED EQUIPMENT SHALL BE REFLECTED IN THE CONTRACT BID PRICE.

| QUANTITY | UNIT | DESCRIPTION |
|----------|------|-----------------------|
| 4 | EACH | PEDESTRIAN PUSHBUTTON |

SCHEDULE OF QUANTITIES

| QUAN. | UNIT | ITEM |
|-------|------|---|
| 1 | EACH | MAINTENANCE OF EXISTING TRAFFIC SIGNAL INSTALLATION |
| 4 | EACH | PEDESTRIAN PUSH-BUTTON |
| 1 | EACH | REMOVE EXISTING TRAFFIC SIGNAL EQUIPMENT |

| I.D.O.T. TRAFFIC SIGNAL INSTALLATION ELECTRICAL SERVICE REQUIREMENTS | | | | |
|--|--------------|--------|------------------|----------------|
| TYPE | NO. OF LAMPS | INCAND | LED % OPERATIONS | TOTAL WATTAGE |
| SIGNAL (RED) | 18 | | 0.50 | 153.00 |
| (YELLOW) | 18 | | 0.25 | 112.50 |
| (GREEN) | 18 | | 0.25 | 67.50 |
| ARROW | 20 | | 0.10 | 24.00 |
| PED. SIGNAL | 4 | | 1.00 | 100.00 |
| CONTROLLER | 1 | | 100 | 100.00 |
| ILLUM. SIGN | 4 | | 0.05 | 5.00 |
| LUMINAIRE | | 250 | | 0.50 |
| VIDEO SYSTEM | | 150 | | 1.00 |
| FLASHER | | | 0.50 | |
| ENERGY COSTS TO: | | | | TOTAL = 562.00 |

VILLAGE OF ARLINGTON HEIGHTS
33 SOUTH ARLINGTON HEIGHTS ROAD
ARLINGTON HEIGHTS, ILLINOIS 60005

ENERGY SUPPLY - CONTACT: DAVE SCHACHT
PHONE: (630) 437-2129
COMPANY: COMED

| | | | |
|-------------|----------------------|------------|-----------|
| FILE NAME = | USER NAME = #USER* | DESIGNED - | REVISED - |
| #FILE# | | DRAWN - | REVISED - |
| | PLOT SCALE = #SCALE* | CHECKED - | REVISED - |
| #MODELNAME* | PLOT DATE = #DATE* | DATE - | REVISED - |

STATE OF ILLINOIS
DEPARTMENT OF TRANSPORTATION

SCHEDULE OF QUANTITIES, CABLE PLAN, PHASE DESIGNATION
DIAGRAM, AND EMERGENCY VEHICLE PREEMPTION SEQUENCE,
US14 (NW HIGHWAY) AT WILKE ROAD

SCALE: NONE SHEET OF SHEETS STA. TO STA.

| F.A. RTE. | SECTION | COUNTY | TOTAL SHEETS | SHEET NO. |
|---------------------------|------------|--------|--------------|--------------------|
| VAR | 2013-005-1 | COOK | 85 | 51 |
| | | | | CONTRACT NO. 60W23 |
| ILLINOIS FED. AID PROJECT | | | | |