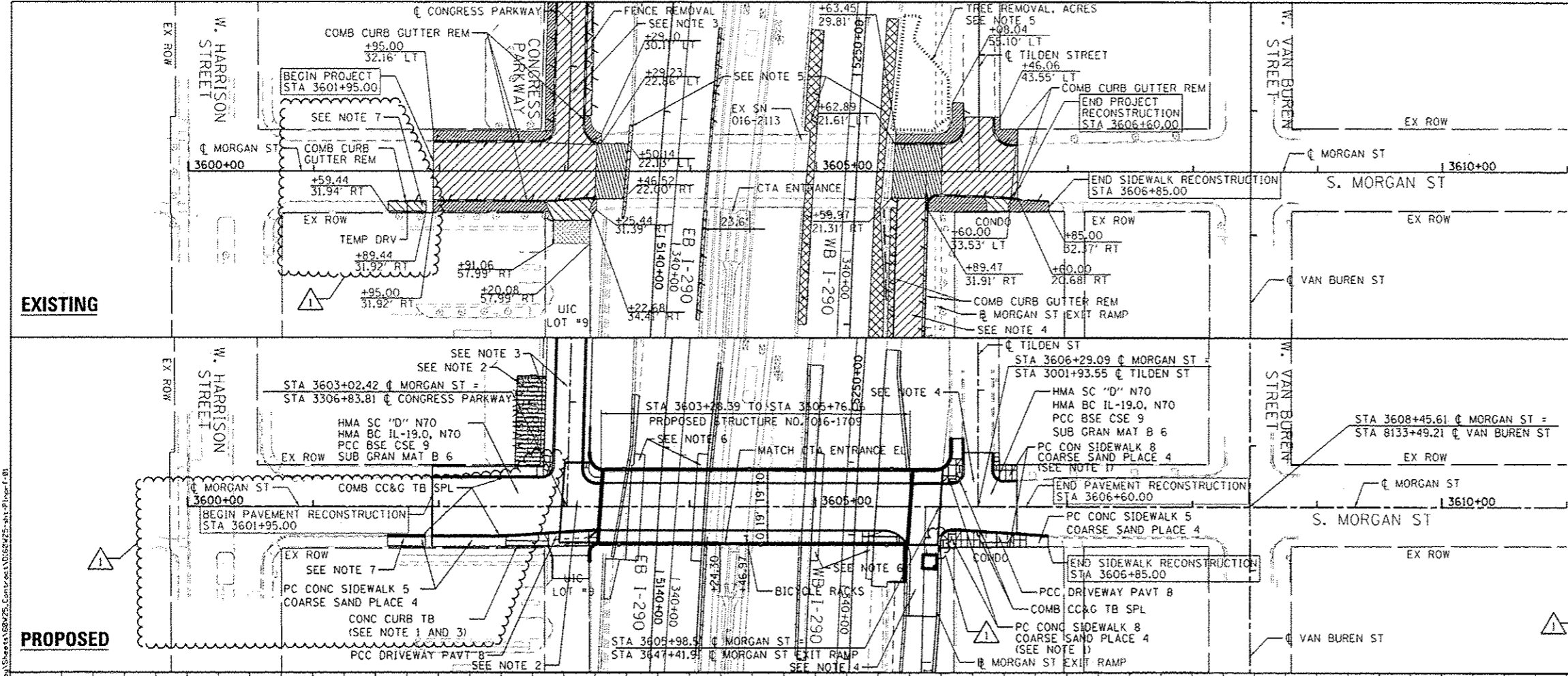


DATE	
BY	
REVISION	
NO.	
DATE	
BY	
REVISION	
NO.	
DATE	
BY	
REVISION	
NO.	

DATE	
BY	
REVISION	
NO.	
DATE	
BY	
REVISION	
NO.	
DATE	
BY	
REVISION	
NO.	



PAVEMENT REMOVAL LEGEND

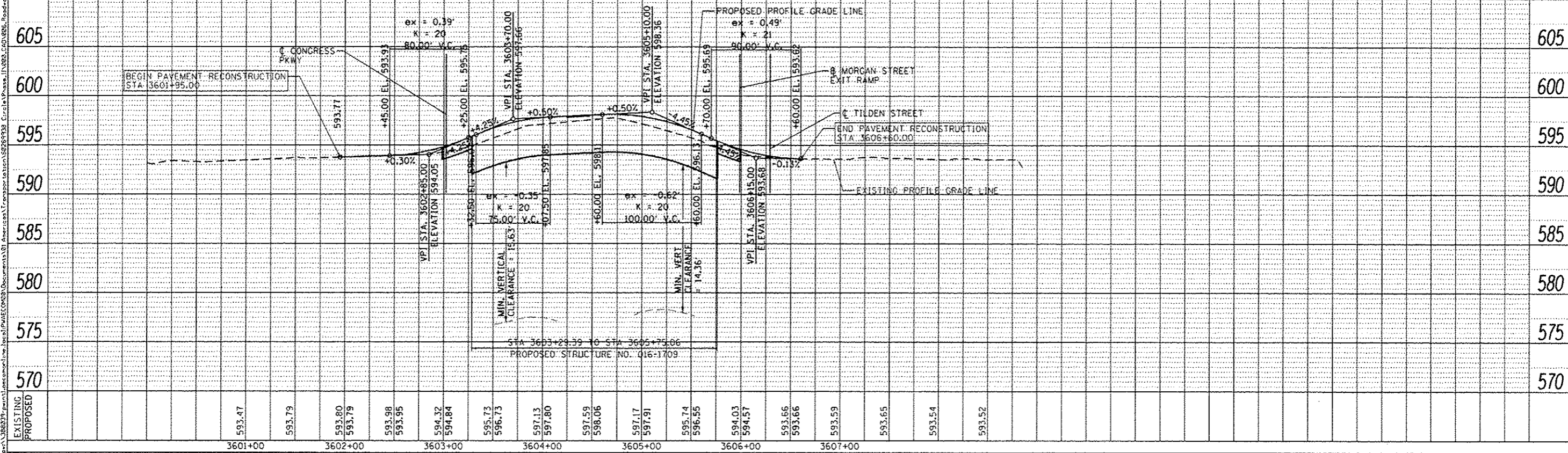
- PAVEMENT REMOVAL
- PAVED SHOULDER REMOVAL
- DRIVEWAY PAVEMENT REMOVAL
- APPROACH SLAB REMOVAL
- SIDEWALK REMOVAL
- PARKING LOT PAVEMENT REMOVAL
- LINEAR REMOVAL
- TREE REMOVAL, ACRES

GRAPHIC SCALE
0 50 100 FEET

NOTES

1. SEE CURB RAMP DETAIL FOR ADA RAMP INFORMATION.
2. SEE INTERSECTION DETAIL FOR INTERSECTION TRANSITION INFORMATION.
3. SEE PLAN AND PROFILE - CONGRESS PARKWAY / UIC DRIVEWAY FOR ADDITIONAL INFORMATION.
4. SEE PLAN AND PROFILE - MORGAN SHEET EXIT RAMP AND TILDEN STREET FOR ADDITIONAL INFORMATION.
5. SEE I-290 REMOVAL PLAN FOR ADDITIONAL INFORMATION.
6. SEE I-290 ROADWAY PLAN FOR ADDITIONAL INFORMATION.
7. THE LOCATION OF THE UIC TEMPORARY DRIVEWAY ENTRANCE SHALL BE VERIFIED IN THE FIELD FOR REMOVAL. THE LOCATION PROVIDED IN THESE PLANS ARE APPROXIMATE. THE DRIVEWAY ENTRANCE WILL BE REPLACED WITH PROPOSED CEMENT CONCRETE SIDEWALK 5 INCH AND COMBINATION CONCRETE CURB AND GUTTER, TYPE B (SPECIAL).

GRAPHIC SCALE
0 50 100 FEET



AECOM 303 EAST MADISON DRIVE, SUITE 1400 CHICAGO, IL 60601-5276 PHONE: (312) 375-7100 FAX: (312) 375-8800	0168W25-sha-P1-imp-f-01	DESIGNED - AFC	REVISED - 7/19/2013	STATE OF ILLINOIS DEPARTMENT OF TRANSPORTATION	PLAN & PROFILE - MORGAN STREET		F.A.I. RTE. 90/94/290	SECTION 2013-007R	COUNTY COOK	TOTAL SHEETS 317	SHEET NO. 42	
	USER NAME: chliu	DRAWN - AFC	REVISED -		SCALE: 1" = 50'		SHEET 1 OF 1 SHEETS	STA. TO STA.	CONTRACT NO. 60W25			
	PLOT SCALE: 50,0000 / 1"	CHECKED - DBM	REVISED -		ILLINOIS FED. AID PROJECT							
	PLOT DATE: 7/11/2013	DATE: 6/17/2013	REVISED -									