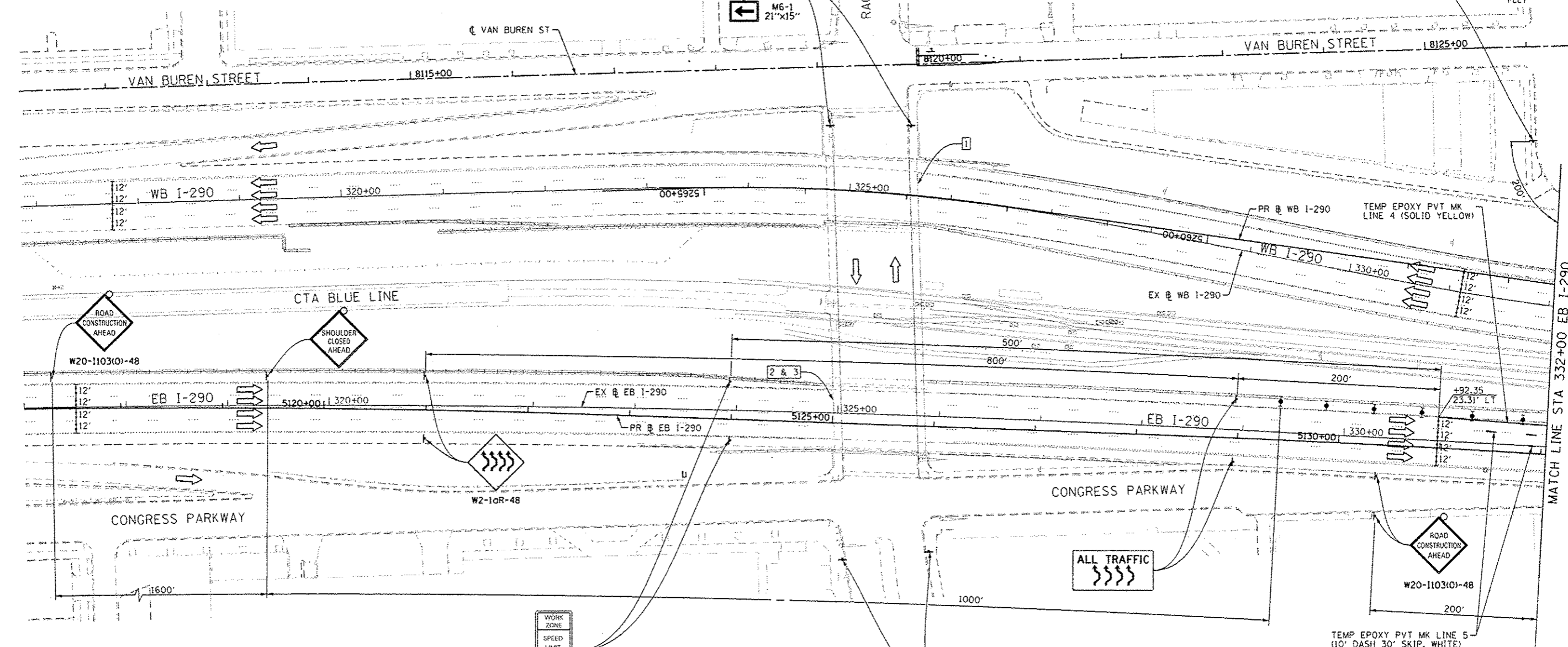
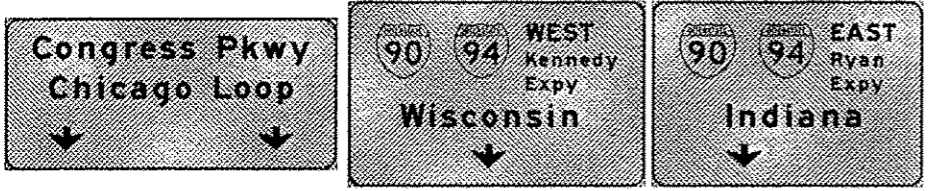
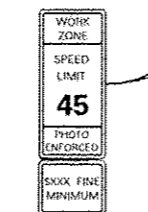
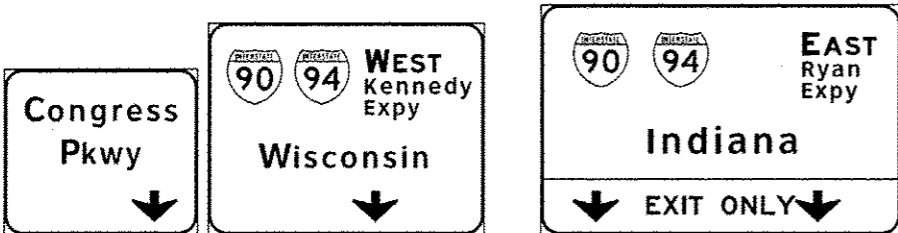


NOTE:
UNLESS NOTED OTHERWISE, ALL STATIONS AND OFFSETS USED
ARE TAKEN FROM EITHER EXISTING EB AND WB I-290 BASELINES

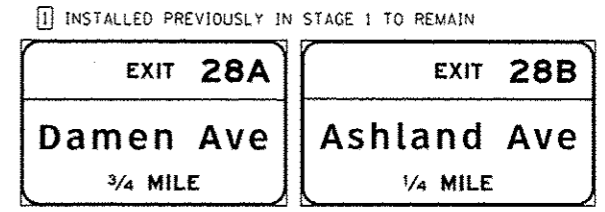
2 REMOVE, STORE, AND RE-ERECT OVERHEAD SIGN PANEL (SPECIAL)
(REMOVE AND STORE SIGN PANEL IN STAGE 2 AND RE-ERECT IN STAGE 4)
REFER TO 3 FOR TEMPORARY OVERHEAD SIGNS



3 INSTALL TEMPORARY OVERHEAD SIGN PANELS. SEE OVERHEAD SIGN
STRUCTURE PLANS (SHEETS 112 TO 121) FOR ADDITIONAL INFORMATION.
(PAID FOR AS SIGN PANEL TYPE 3)



W2-1115(0)-3618
R2-1-3648
R10-190P-3618
R2-1106-3618



DIG0425-Sht-Staging2-01.dgn
USER NAME: rphun
PLOT SCALE: 50.0000' / 1" = 1000'
PLOT DATE: 7/16/2013

DESIGNED - DPS	REVISED - 7/19/2013
DRAWN - PHP	REVISED -
CHECKED - DBM	REVISED -
DATE - 6/17/2013	REVISED -

STATE OF ILLINOIS
DEPARTMENT OF TRANSPORTATION

SUGGESTED STAGES OF CONSTRUCTION AND TRAFFIC CONTROL
STAGE 2
SCALE: 1" = 50' SHEET 1 OF 7 SHEETS STA. TO STA.

F.A.I. RTE.	SECTION	COUNTY	TOTAL SHEETS	SHEET NO.
90/94/290	2013-007R	COOK	317	63
CONTRACT NO. 60W25				ILLINOIS FED. AID PROJECT

FILE PATH: C:\Users\A\Documents\Projects\60W25-Sht-Staging2-01.dgn