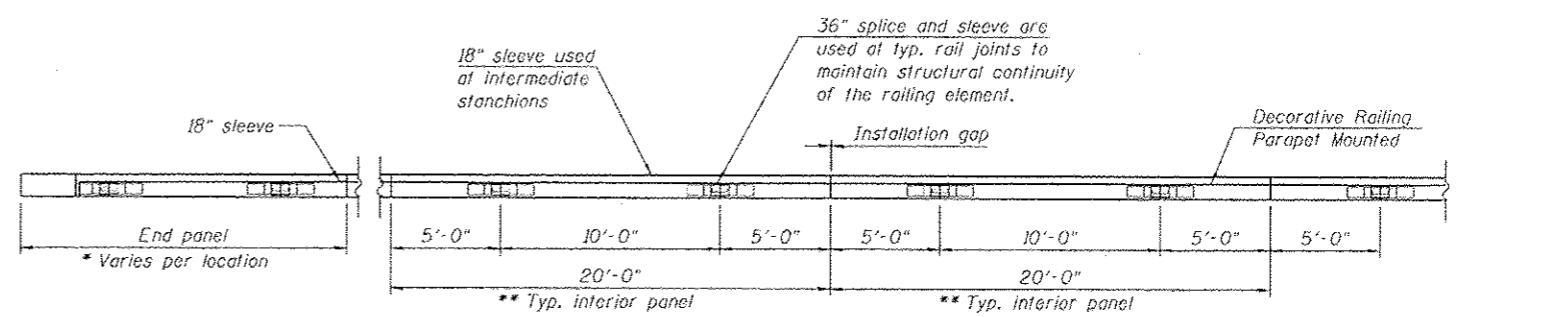
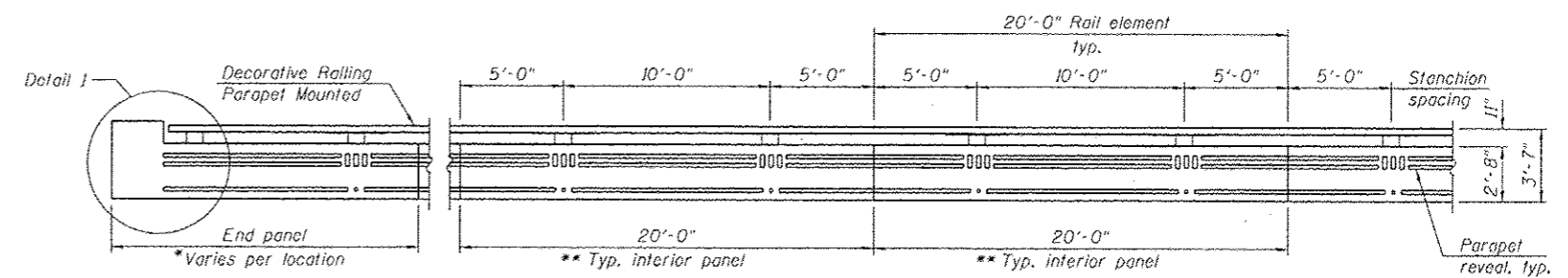


ELEVATION

* Dimensions vary per location. See Sheets 8 and 9 of 9 of Roadway Plans for details.
 ** Some interior panels are not 20' long. See Note 9.

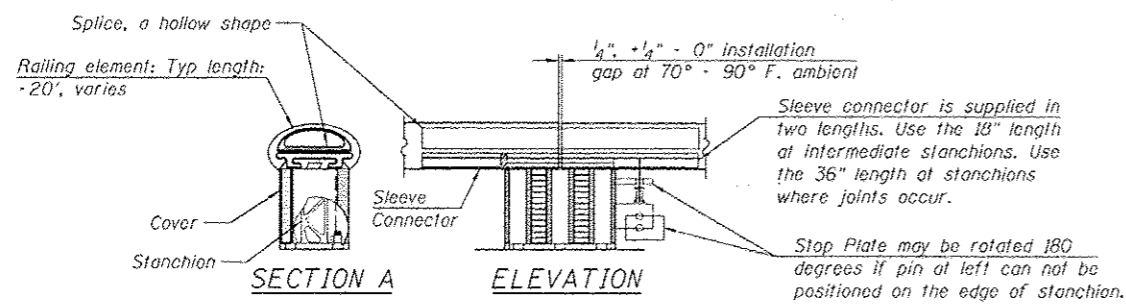


PLAN



ELEVATION

RAIL DETAIL - STANCHION LOCATION AND SPACING

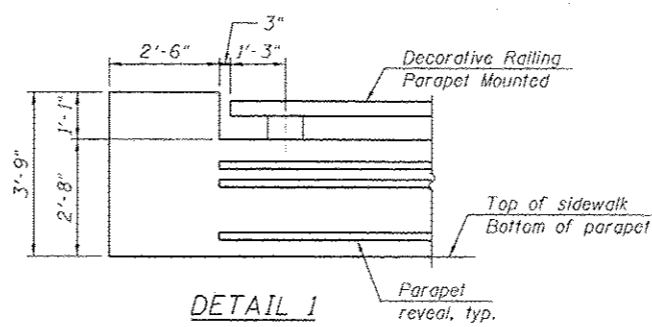


SECTION A

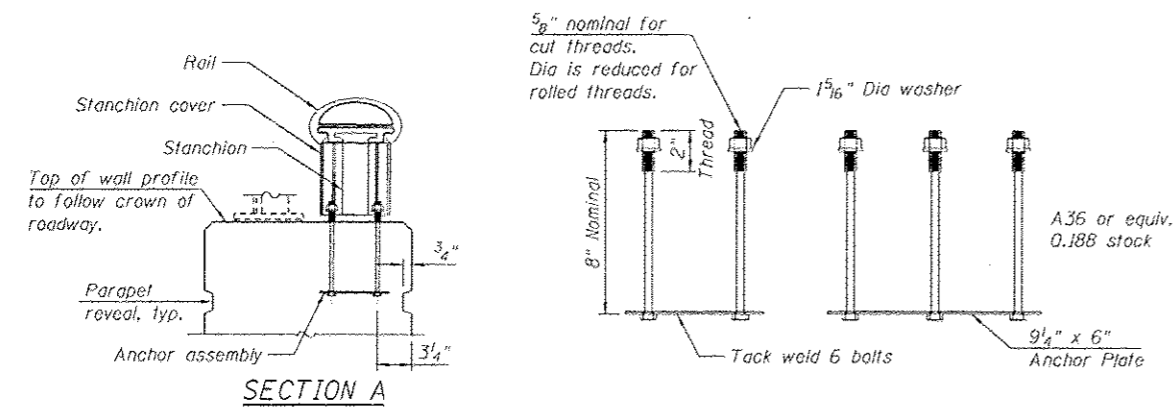
ELEVATION

STANCHION

TYPICAL CHICAGO PARAPET DETAIL



DETAIL 1

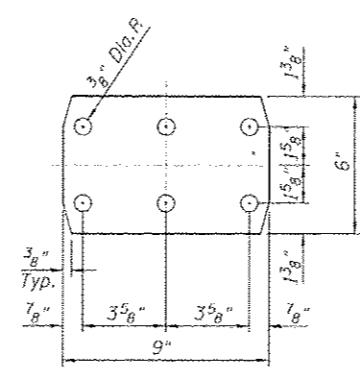


SECTION A

ANCHOR ASSEMBLY

NOTES:

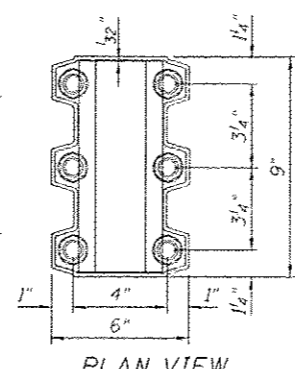
- All fasteners to meet, or exceed, A-307 strength requirements.
- Galvanize per A-153 after fabrication.
- The size and position of parapet reinforcing must be consistent with capture of the anchor assembly. See structural drawings for rebar details.



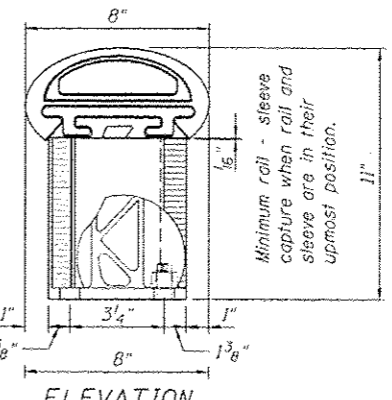
ELASTOMERIC PAD

NOTES:

- Elastomeric pad for stanchion made from 1/16" thick stock.
- One required per stanchion.



PLAN VIEW



ELEVATION

STANCHION COVER

NOTES:

- Cover is shown superimposed over stanchion with anchors in place.
- The stanchion cover is a non-structural element, serving an aesthetic function. It rests on the flange of the stanchion, without fasteners and is captured in place by the rail and stanchion.

NOTES:

- When walls without rail are adjacent to Chicago wall with rail, their traffic face, or the terminus of their traffic face, must be in the same plane as Chicago wall with rail.
- Rustication may vary at terminal ends and is subject to site conditions and site approval. In all other situations, the middle 2.5" x 1.5" rustication is aligned with the center of the stanchion.
- Wall details above show that portion of the wall above the gutter break, the substructure is not shown. Note that substructure(s) depth variations could significantly alter the required top of wall profile.
- Field cutting of rail elements is acceptable. The cut edge will no longer be anodized. Saw cut only, flame cut not allowed.
- End caps shall be used at all rail terminals.
- Railing system to be produced using extruded aluminum that can be clear anodized.
- Alloy selection is based upon the above color requirement and the engineering sufficiency analysis which must be supplied by the contractor.
- Physical appearance to be equal to "Valentine Urban Systems - Chicago wall with rail".
- For panel layout, overall stanchion location, spacing and details, see Sheets 271B and 271C of Roadway plans.

BILL OF MATERIAL

Item	Unit	Total
Decorative Railing Parapet Mounted	FOOT	6.39

HBM
 ENGINEERING GROUP, LLC
 CONSULTING & DESIGN
 CORPORATION & TESTING
 RESEARCH & TESTING

4410 WEST HARRISON ST.
 SUITE 231
 HILLSDALE, IL 60122
 PHONE: (708) 236-0900
 FAX: (708) 236-0901

016170**60W25-S28-BridgeRailing.dwg
 USER NAME = will.mardouas
 PLOT SCALE = 8 1/2" / 1in.
 PLOT DATE = 7/15/2013

DESIGNED - MR. LAG
 DRAWN - MR. LAG
 CHECKED - MAI, MI
 DATE - 6/17/2013

REVISD -
 REVISD -
 REVISD -
 REVISD -

STATE OF ILLINOIS
 DEPARTMENT OF TRANSPORTATION

DECORATIVE RAILING PARAPET MOUNTED DETAILS
 STRUCTURE NO. 016-1709

F.A.I. RITE	SECTION	COUNTY	TOTAL SHEETS	SHEET NO.
90/94/290	2013-00TR	COOK	317	164

SCALE: SHEET 51-20 OF 51 SHEETS STA. TO STA.
 CONTRACT NO. 60W25
 ILLINOIS FED. AID PROJECT

FILE PATH = C:\Users\will.mardouas\Desktop\Prints For The Day\016170**60W25-S28-BridgeRailing.dwg