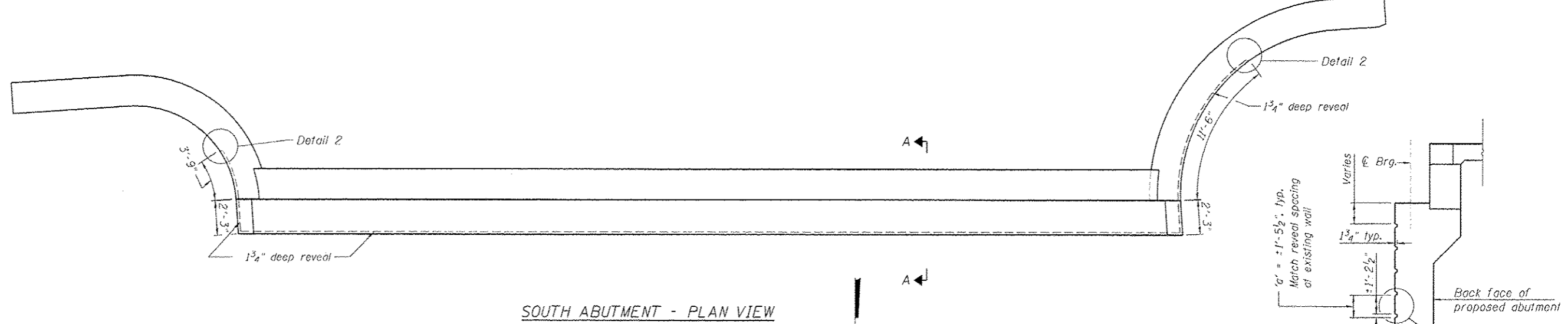


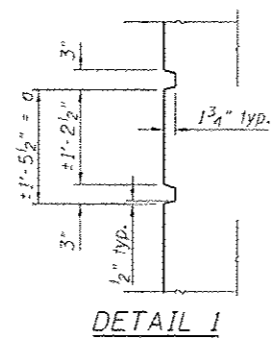
SOUTHEAST WINGWALL ELEVATION
(Shown straight face)

SOUTH ABUTMENT ELEVATION
(Looking South)

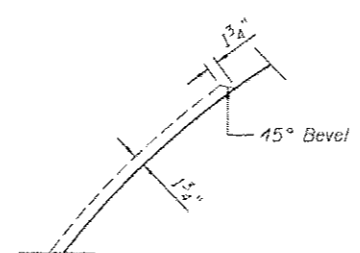
SOUTHWEST WINGWALL ELEVATION
(Shown straight face)



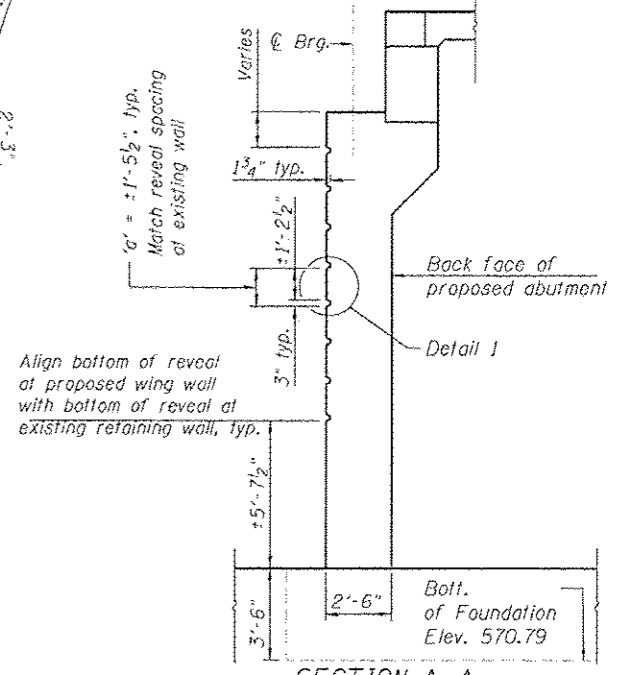
SOUTH ABUTMENT - PLAN VIEW



DETAIL 1



DETAIL 2



SECTION A-A

- NOTES:**
1. Dimension 'a' to be determined from the existing retaining wall texture, as shown on elevation detail (= ±17 1/2")
 2. 3" x 1/4" reveals will not be paid separately, but shall be included with Concrete Superstructure.
 3. The 3" x 1 3/4" reveal will not be paid separately and shall be included in the cost of the pay item "Concrete Structures".

Entire sheet revised

HBM
ENGINEERING GROUP, LLC
CONSULTING & DESIGN
INSPECTION & TESTING
RESEARCH & TESTING

4415 WEST HARRISON ST.
SUITE 231
MILLSIDE, IL 60162
PHONE: (708) 236-0900
FAX: (708) 236-0900

DESIGNED - MR	REVISION - 07/19/2013 MR
DRAWN - MR	REVISION -
CHECKED - MAL, MI	REVISION -
DATE - 6/17/2013	REVISION -

STATE OF ILLINOIS
DEPARTMENT OF TRANSPORTATION

SOUTH ABUTMENT ARCHITECTURAL DETAILS
STRUCTURE NO. 016-1709

F.A.I. RTEL	SECTION	COUNTY	TOTAL SHEETS	SHEET NO.
90/94/290	2013-007R	COOK	317	175
CONTRACT NO. 60W25			ILLINOIS FED. AID PROJECT	

SCALE: SHEET 51-31 OF 51 SHEETS STA. TO STA.