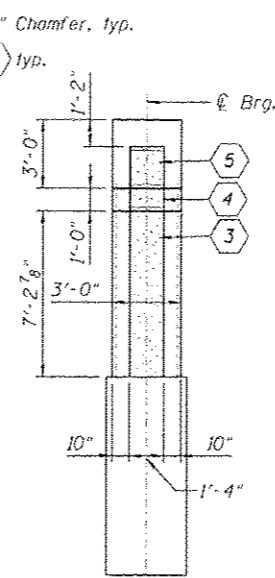
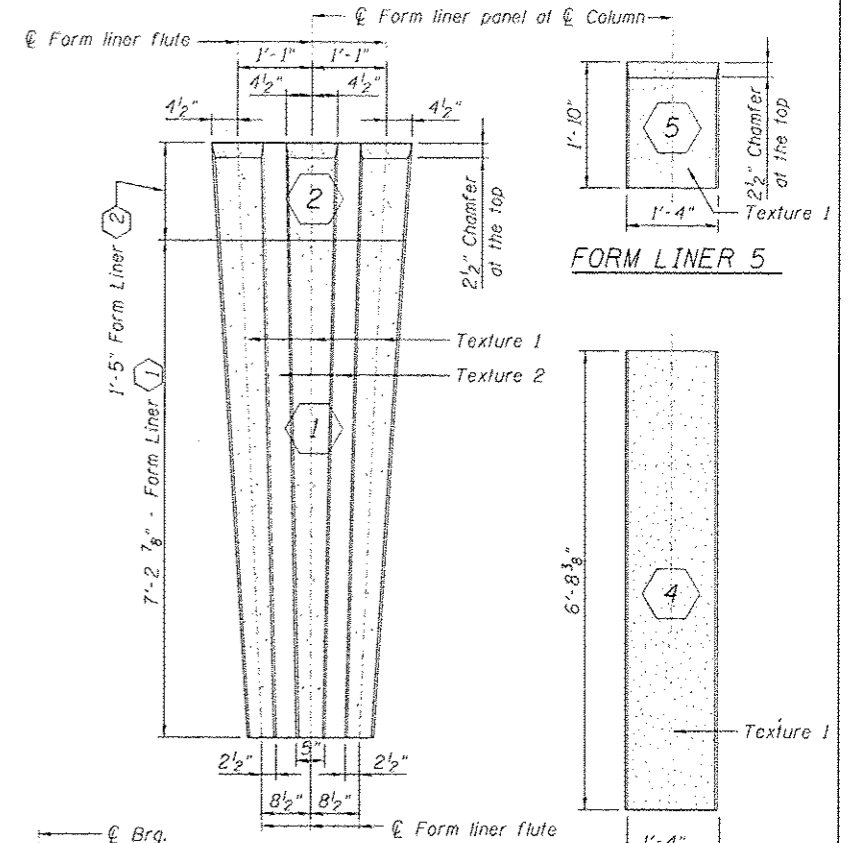


PIER 1 ELEVATION
(Looking North)



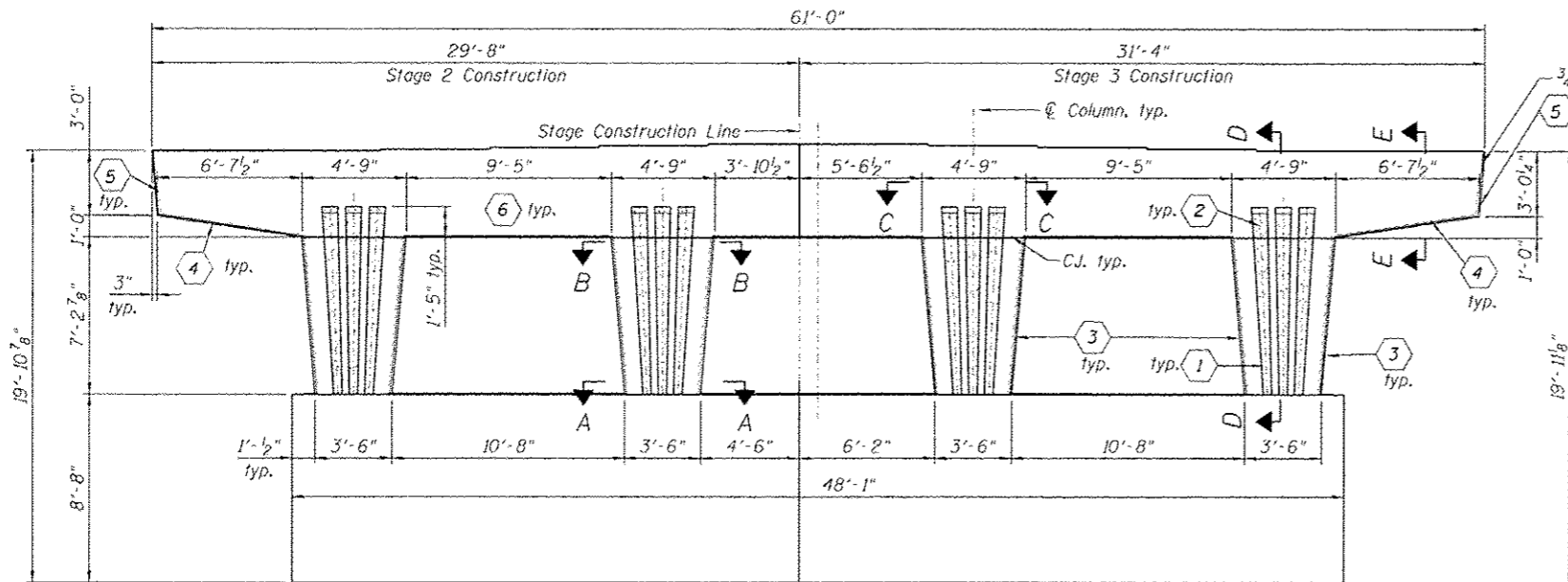
PIER 1 END VIEW
(Looking West)



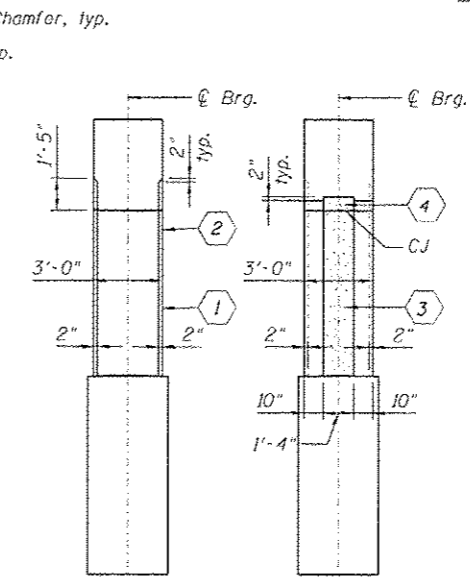
FORM LINER 5

FORM LINER 4

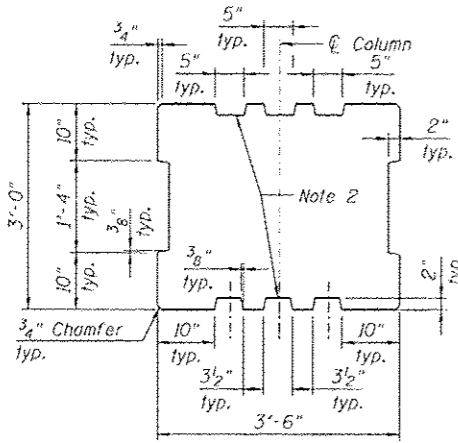
FORM LINER PANEL 1 & 2



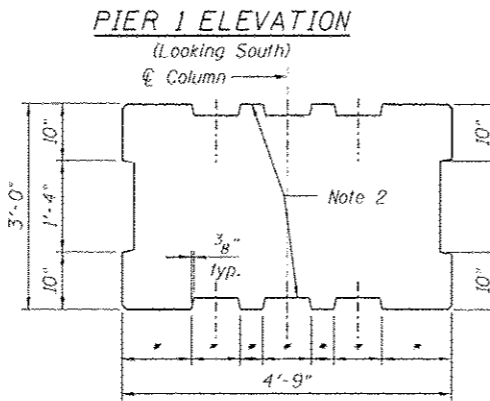
PIER 1 ELEVATION
(Looking South)



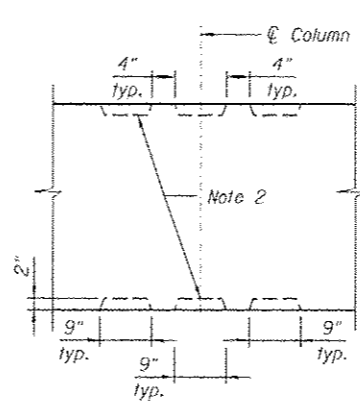
SECTION D-D SECTION E-E



SECTION A-A
At bottom of Column



SECTION B-B



SECTION C-C

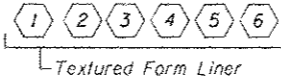
* Dimensions at top of pier form liners (panel 1) to match dimensions at bottom form liners (panel 2)

△ Entire sheet revised

NOTES:

1. Alternate: For surface indicated as Textured Form liner (6), Contractor can chose to build large protrusion directly into three forms if a smooth uniform surface can be provided.
2. Tapered fluting - dimensions vary, see elevation profile.
3. Form liner panel (2) is continuation of panel (1A). Keep adjacent form liners aligned.
4. Hand clean and smooth the surface of the construction joint between the pier and cap.
5. Texture 1: Light Sandblast as selected from manufacturer's standard pattern selection. Texture 2: Smooth
6. Verify and coordinate all dimensions with structural and civil drawings.

LEGEND



BILL OF MATERIAL

| ITEM | UNIT | TOTAL |
|-----------------------------|-------|-------|
| Form Liner Textured Surface | SQ FT | 880 |
| | | |
| | | |

HBM
ENGINEERING GROUP, LLC
CONSULTING & DESIGN
SECTION & TESTING
RESEARCH & TESTING

4415 WEST HARRISON ST.
SUITE 231
HILLSTOCK, IL 60162
PHONE: (708) 236-0900
FAX: (708) 236-0901

DESIGNED - MR
DRAWN - MR
CHECKED - MAI, MI
DATE - 6/17/2013

REVISIO - 01/19/2013 MR
REVISED -
REVISED -
REVISED -

**STATE OF ILLINOIS
DEPARTMENT OF TRANSPORTATION**

**PIER 1 ARCHITECTURAL DETAILS
STRUCTURE NO. 016-1709**

SCALE: SHEET 51-39 OF 51 SHEETS STA. TO STA.

F.A.I. RTE. SECTION COUNTY TOTAL SHEETS SHEET NO.
90/94/290 2013-007R COOK 317 183
CONTRACT NO. 60W25
ILLINOIS FED. AID PROJECT

FILE PATH: C:\Users\hml\OneDrive\Desktop\Permits For The Dept\0161709-60W25-630-Per1Arch.dwg