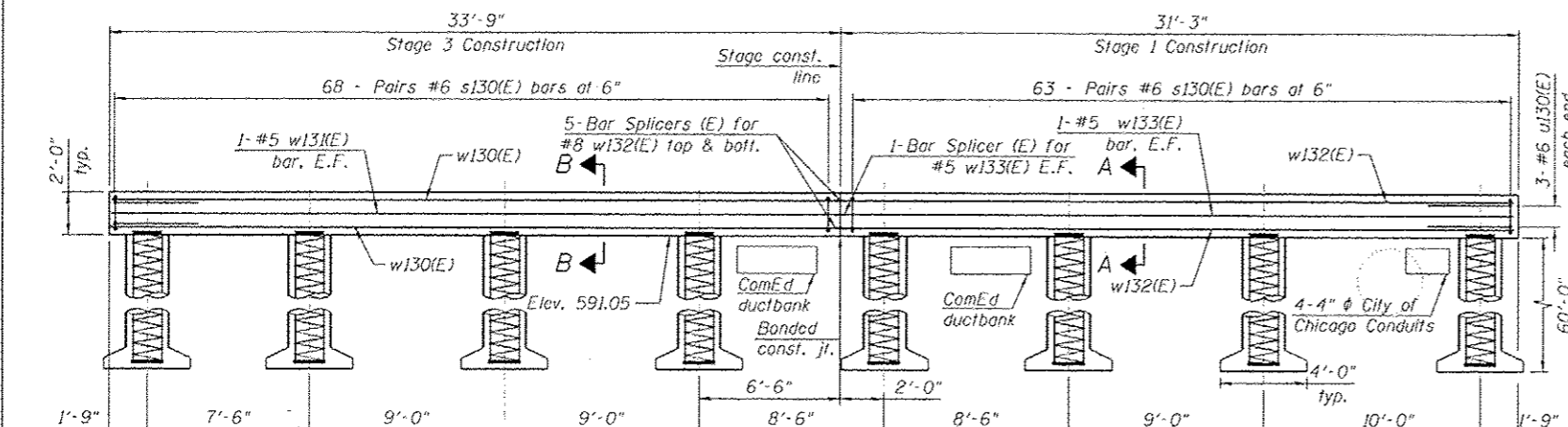
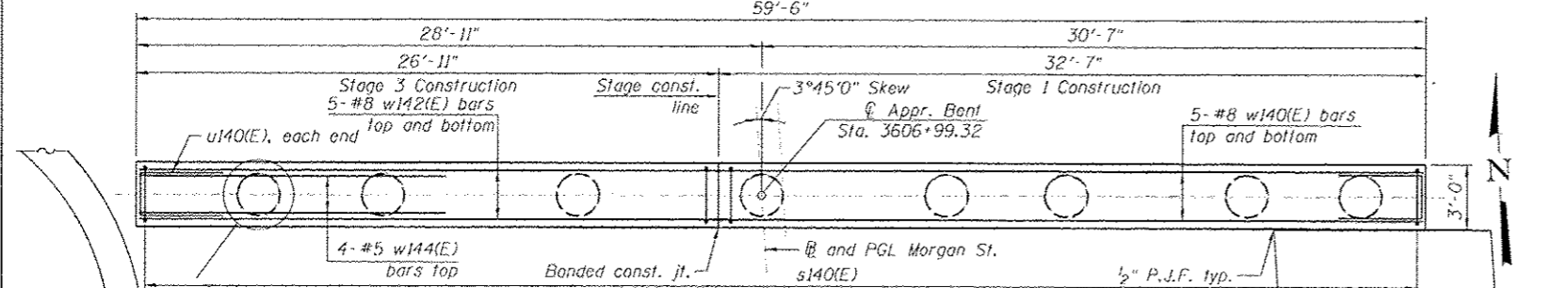


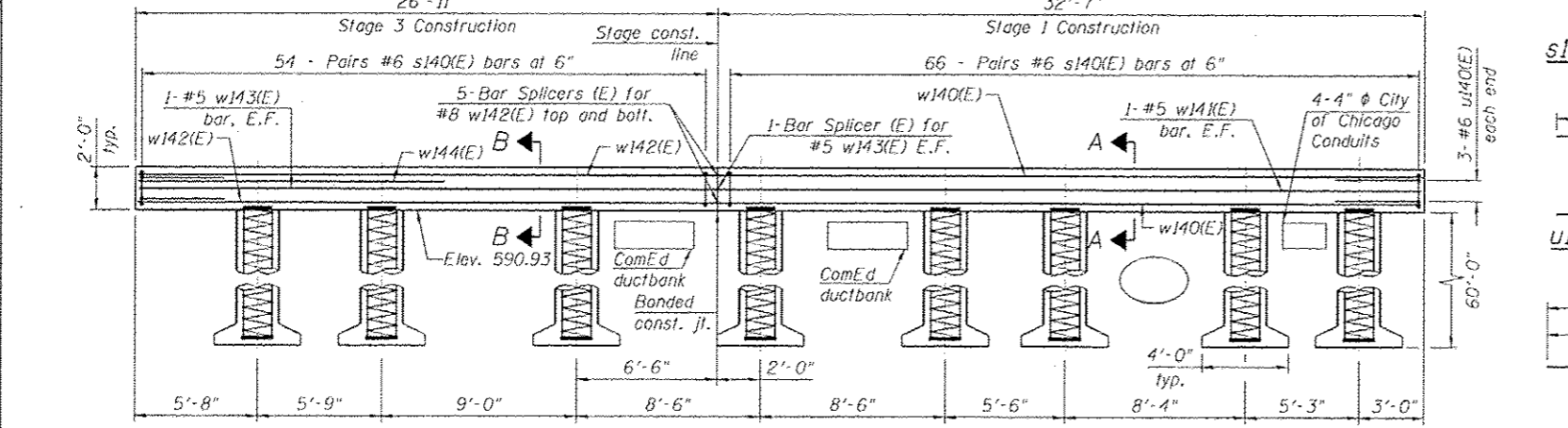
PLAN OF SOUTH APPROACH BENT



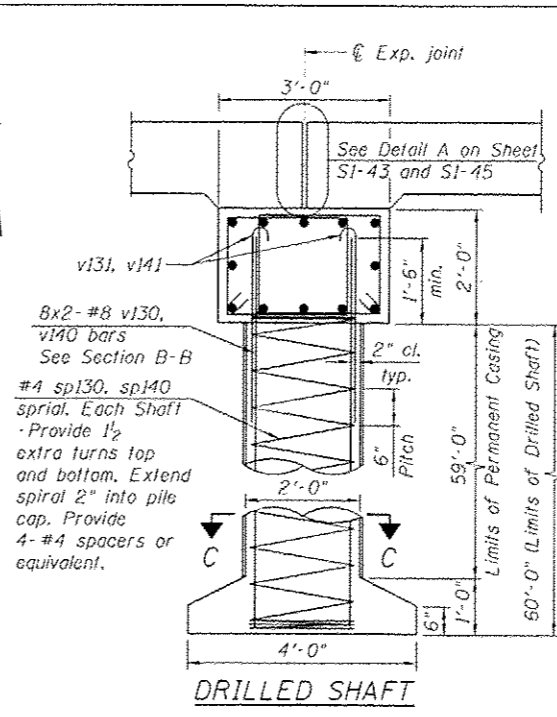
ELEVATION (Looking North)



PLAN OF NORTH APPROACH BENT



ELEVATION (Looking North)

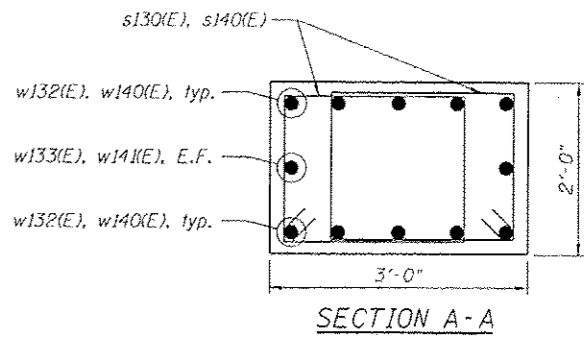


DRILLED SHAFT

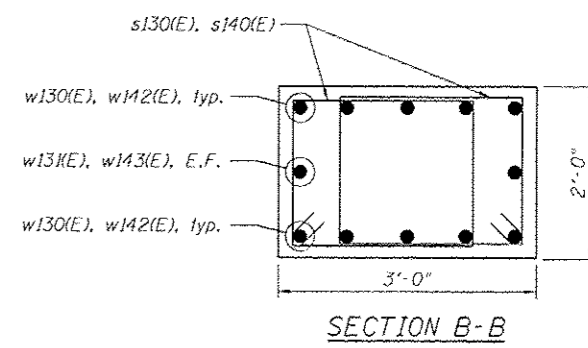
Bar	Lap
#4	2'-7"
#5	3'-3"
#6	3'-10"
#7	5'-2"
#8	6'-9"

NOTES:

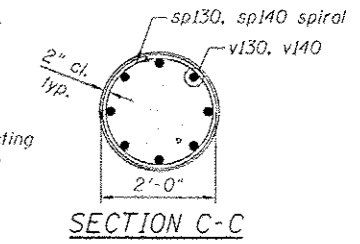
1. Reinforcement bars designated (E) shall be epoxy coated.
2. Bars indicated thus, 8x2-#5 etc., indicates 8 lines of bars with 2 lengths per line.
3. All edges shall have standard 3/4" chamfer.
4. Installation of drilled shaft requires coring through existing Northwest wingwall footing. Additional costs included in Drilled Shaft in Soil.
5. Spirals are measured vertically.



SECTION A-A



SECTION B-B



SECTION C-C

BILL OF MATERIAL

Bar	No.	Size	Length	Shape
w130(E)	10	#8	33'-6"	—
w133(E)	2	#5	33'-6"	—
w132(E)	10	#8	31'-0"	—
w133(E)	2	#5	31'-0"	—
s130(E)	262	#6	8'-8"	□
sp130	8	#4	60'-2"	▨
u130(E)	6	#6	10'-3"	□
v130	128	#8	34'-2"	—
v131	64	#8	9'-5"	—
Structure Excavation		Cu Yd	34	
Concrete Structures		Cu Yd	14.4	
Reinforcement Bars		Pound	16,753	
Reinforcement Bars, Epoxy Coated		Pound	5,360	
Permanent Casing		Foot	480	
Drilled Shaft in Soil		Cu Yd	56	

BILL OF MATERIAL

Bar	No.	Size	Length	Shape
w140(E)	10	#8	32'-4"	—
w141(E)	2	#5	32'-4"	—
w142(E)	10	#8	26'-8"	—
w143(E)	2	#5	26'-8"	—
w144(E)	4	#8	14'-0"	—
s140(E)	240	#6	8'-8"	□
sp140	8	#4	60'-2"	▨
u140(E)	6	#6	10'-3"	□
v140	128	#8	34'-2"	—
v141	64	#8	9'-5"	—
Structure Excavation		Cu Yd	31	
Concrete Structures		Cu Yd	13.2	
Reinforcement Bars		Pound	16,753	
Reinforcement Bars, Epoxy Coated		Pound	5,070	
Permanent Casing		Foot	480	
Drilled Shaft in Soil		Cu Yd	56	

FILE PATH: C:\Users\m11\OneDrive\Desktop\Projects - For The Dept\016709-60W29-547-PJABent.dwg
 HBM ENGINEERING GROUP, LLC
 4415 WEST HARRISON ST.
 SUITE 231
 HILLSDALE, IL 60142
 PHONE: (708) 236-0900
 FAX: (708) 236-0901

DESIGNED - MAF, MRV	REVISION - 07/19/2013 MI, WM
DRAWN - MWM, HH	REVISION -
CHECKED - MI, MAI	REVISION -
DATE - 6/17/2013	REVISION -

STATE OF ILLINOIS
DEPARTMENT OF TRANSPORTATION

SOUTH AND NORTH APPROACH PILE BENT SUPPORT
STRUCTURE NO. 016-1709

F.A.I. RTE.	SECTION	COUNTY	TOTAL SHEETS	SHEET NO.
90/94/290	2013-007R	COOK	317	191
CONTRACT NO. 60W29				