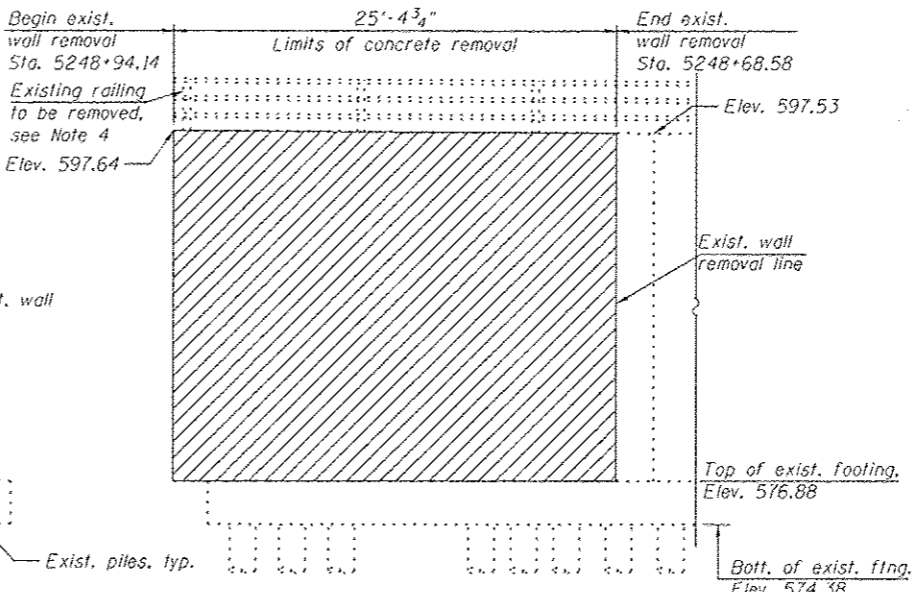
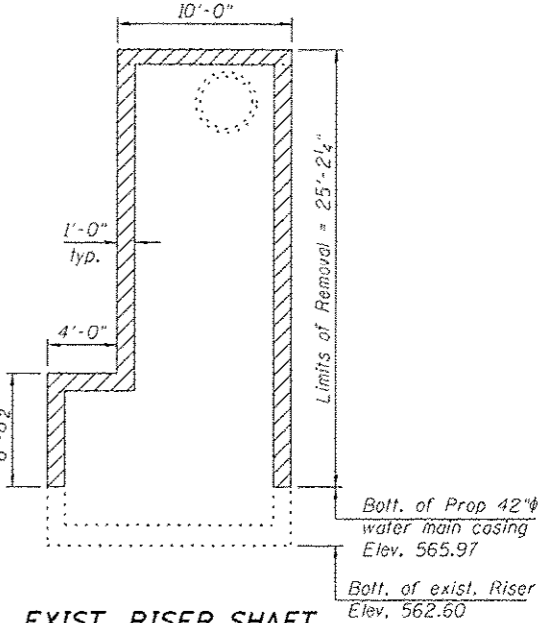


ELEVATION

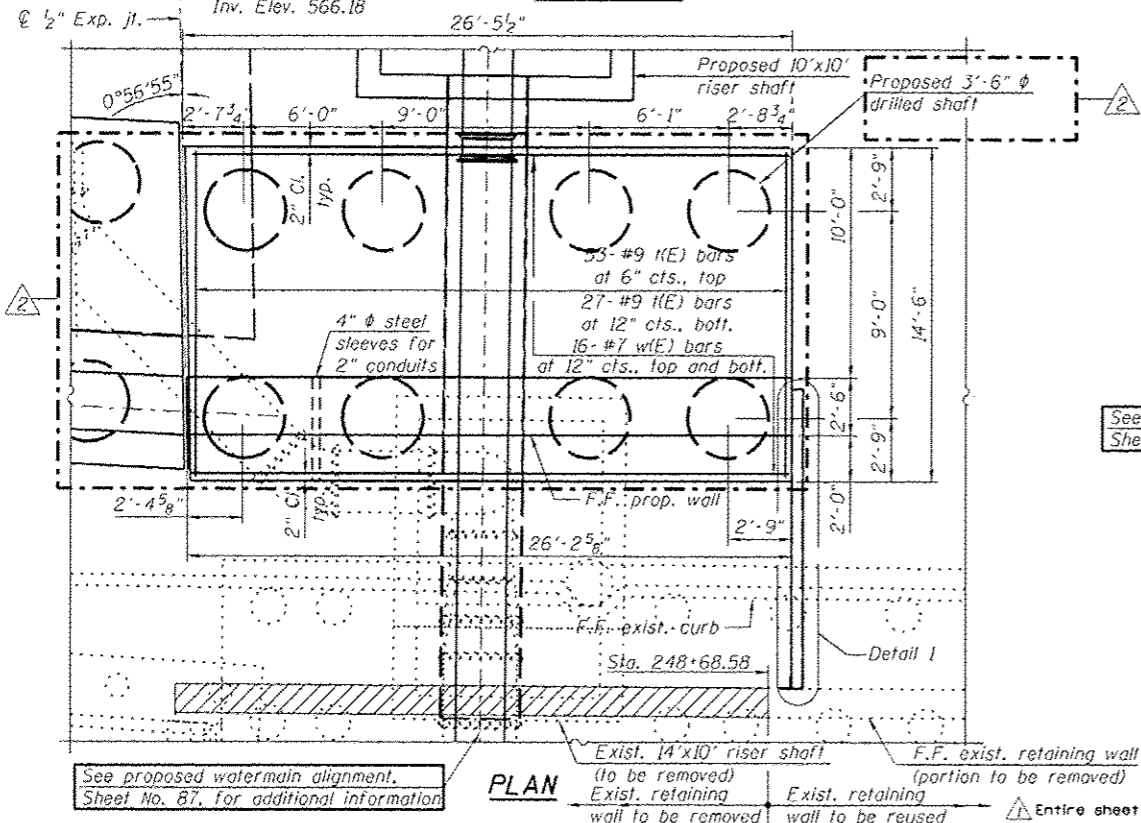
TYPICAL REMOVAL SECTION



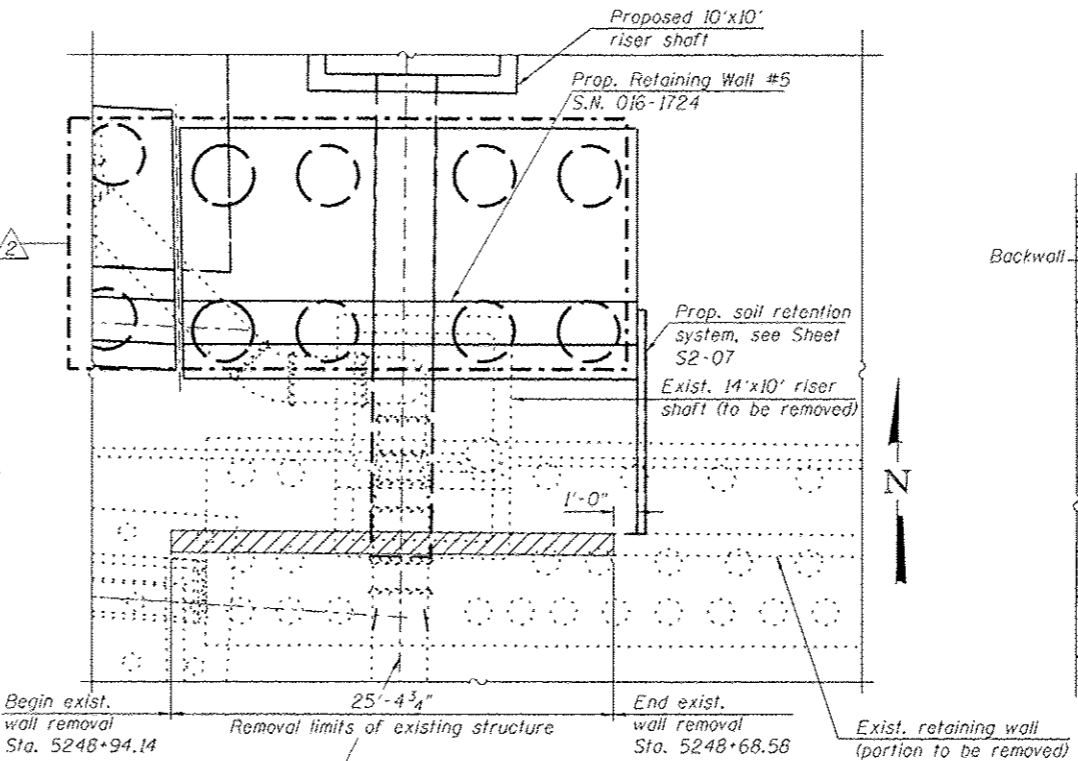
REMOVAL ELEVATION



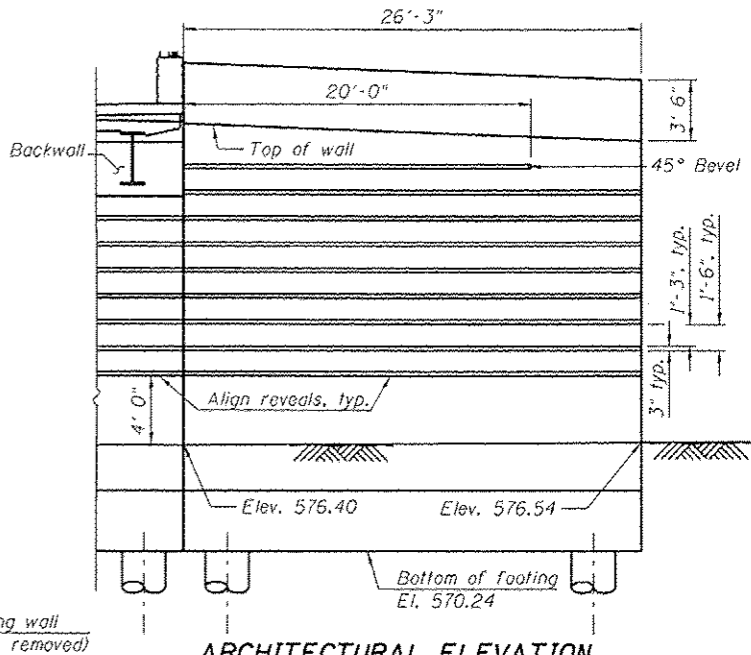
**EXIST. RISER SHAFT
REMOVAL ELEVATION**



PLAN



REMOVAL PLAN



ARCHITECTURAL ELEVATION

NOTES:

1. For sections, details lap splices and bill of material, See Sheet S2-06.
2. All existing piles are 18" ϕ concrete piles.
3. For Detail 1, Soil Retention System, see Sheet S2-07.
4. Cost for removal of existing railing shall be included with "Concrete Removal".
5. Existing footings and portions of existing piles to be removed in a future contract.

SCOPE OF WORK FOR RETAINING WALL 5:

1. Remove portion of the wall stem interfering with the riser shaft construction as shown on the Removal Plan and Removal Elevation.
2. Construct the wall drilled shaft, footing stem and parapet.
3. Backfill as shown on Sheet S2-07.
4. Apply protection coat per limits shown on the Typical Wall Section on Sheet S2-06.
5. The remainder of the wall stem, footing and portion of piles interfering with the new future contracts construction will be included in a future contract.
6. The 3" x 1 3/4" reveal will not be paid separately and shall be included in the cost of the pay item "Concrete Structures".

LEGEND:

- B.F. - denotes Back Face
- E.F. - denotes Each Face
- F.F. - denotes Front Face
- Concrete Removal

BILL OF MATERIAL

ITEM	UNIT	TOTAL
Concrete Removal	CU YD	68.0

HBM
 CONSULTING GROUP, INC.
 415 WEST HARRISON ST.
 SUITE 231
 MILLVILLE, IL 60122
 PHONE: (708) 236-0900
 FAX: (708) 236-0901

DESIGNED - MI, MAF, JJS	REVISD - 07/19/2013 MI, WM
DRAWN - JJS, MAF	REVISD - 07/30/2013 MI, LAB
CHECKED - MAI, MI, LAB	REVISD -
DATE - 6/17/2013	REVISD -

**STATE OF ILLINOIS
 DEPARTMENT OF TRANSPORTATION**

**WALL PLAN & ELEVATION, REM. PLAN & ELEVATION, & REVEAL DETAILS
 RETAINING WALL (STRUCTURE NO. 016-1724) AND RISER SHAFT**

F.A.I. RTE.	SECTION	COUNTY	TOTAL SHEETS	SHEET NO.
90/94/290	2013-007R	COOK	317	200
CONTRACT NO. 60W25			ILLINOIS FED. AID PROJECT	