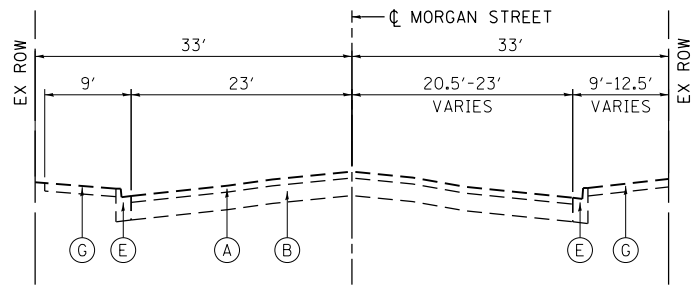


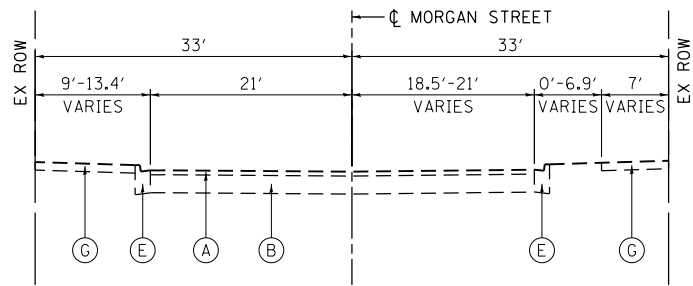
FILE PATH = p:\388035\part1\escomon\line\local\p\AECD\000\Documents\01_Americas\Transportation\60269938_Circle\Phase\1\000_CAD\006_Roadway\Sheets\60W25-sh-typical-01



**EXISTING TYPICAL SECTION
MORGAN STREET**

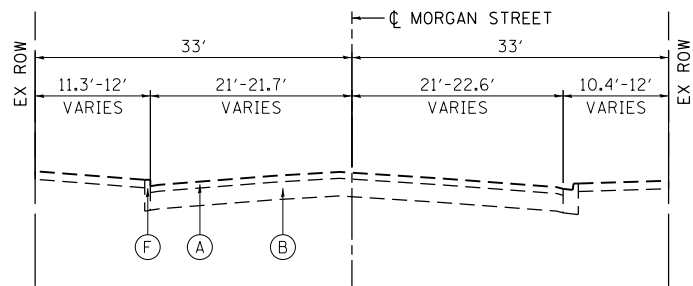
STA 3602+45.00 TO STA 3603+24.68

BRIDGE INCLUDING APPROACH PAVEMENT
STA 3603+24.68 TO STA 3605+99.59



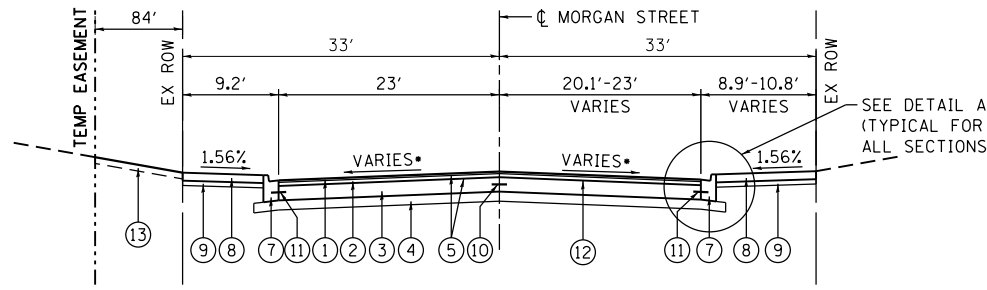
**EXISTING TYPICAL SECTION
MORGAN STREET**

STA 3605+99.59 TO STA 3606+60.00



**EXISTING TYPICAL SECTION
MORGAN STREET**

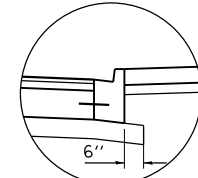
STA 3606+60.00 TO STA 3606+85.00



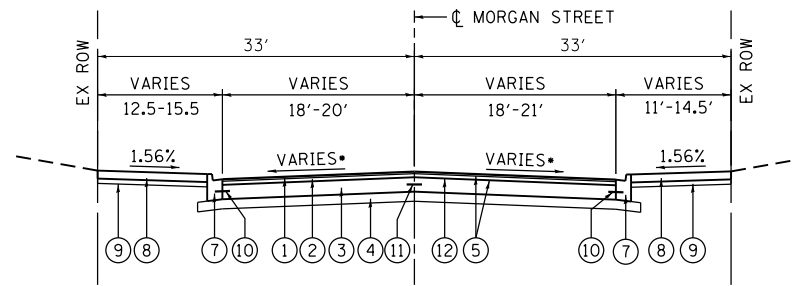
**PROPOSED TYPICAL SECTION
MORGAN STREET**

STA 3602+45.00 TO STA 3602+98.12
• SEE NOTE 2

BRIDGE INCLUDING APPROACH PAVEMENT
STA 3602+98.12 TO STA 3605+99.34

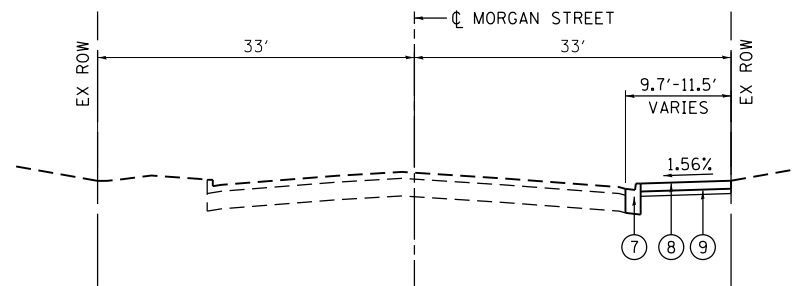


DETAIL A



**PROPOSED TYPICAL SECTION
MORGAN STREET**

STA 3605+99.34 TO STA 3606+60.00
• SEE NOTE 2



**PROPOSED TYPICAL SECTION
MORGAN STREET**

STA 3606+60.00 TO STA 3606+85.00

EXISTING

- (A) HOT-MIX ASPHALT PAVEMENT, 2 3/4" - 5"
- (B) PORTLAND CEMENT CONCRETE PAVEMENT, 11" - 11 1/4"
- (C) PORTLAND CEMENT CONCRETE PAVEMENT, 10"
- (D) COMBINATION CONCRETE CURB AND GUTTER, TYPE M-2.12
- (E) B-V.12 CONCRETE CURB AND GUTTER
- (F) CONCRETE CURB
- (G) P.C. CONCRETE SIDEWALK

PROPOSED

- (1) HOT-MIX ASPHALT SURFACE COURSE, MIX "D", N70, 1 1/2"
- (2) HOT-MIX ASPHALT BINDER COURSE, IL-19.0, N70, 2 1/4"
- (3) PORTLAND CEMENT CONCRETE BASE COURSE, 9"
- (4) SUB-BASE GRANULAR MATERIAL, TYPE B, 6"
- (5) BITUMINOUS MATERIALS (PRIME COAT)
- (6) AGGREGATE (PRIME COAT)
- (7) COMBINATION CONCRETE CURB AND GUTTER, TYPE B (SPECIAL)
- (8) PORTLAND CEMENT CONCRETE SIDEWALK (SEE PLAN & PROFILE SHEETS FOR DEPTHS)
- (9) COARSE SAND PLACEMENT, 4"
- (10) #6 TIE BARS, 24" LONG AT 24" C-C (LONGITUDINAL CONSTRUCTION JOINT) (INCLUDED IN PRICE FOR BID FOR PCC BASE COURSE)
- (11) #6 TIE BARS, 24" LONG AT 24" C-C (INCLUDED IN PRICE FOR BID FOR CURB AND GUTTER)
- (12) PAVEMENT FABRIC
- (13) TOPSOIL FURNISH AND PLACE, 4"

NOTES:

1. AS INDICATED ON THE CIVIL PLANS, TYPICALLY AT LEAST 6' OF PROPOSED SIDEWALK WIDTH MUST HAVE A CROSS SLOPE OF 1:64 OR LESS.
2. TYPICAL LOCAL ROADWAY CROSS SLOPE VARIES BETWEEN 1.4% AND 3.6% AS INDICATED ON THE PLANS.
3. ADJACENT TO CURB REMOVAL UP TO 2' OF PAVEMENT MAY BE REPLACED AS DIRECTED BY THE ENGINEER.
4. STABILIZATION STONE SHALL BE USED AT THE DISCRETION OF THE ENGINEER UNDER SUB-BASES AND STRUCTURES WHERE THE SUBGRADE IS DEEMED TOO UNSTABLE TO SUPPORT THE PROPOSED CONSTRUCTION.

HOT MIX ASPHALT MIXTURE REQUIREMENTS

MORGAN STREET AND CONGRESS PARKWAY	AIR Voids
HOT-MIX ASPHALT SURFACE COURSE, MIX "D", N70 (IL-9.5 mm); 1 1/2"	4% @ 50 GYR.
HOT-MIX ASPHALT BINDER COURSE, IL-19.0, N70; 2 1/4"	4% @ 50 GYR.

1. THE UNIT WEIGHT USED TO CALCULATE ALL HMA SURFACE MIXTURE QUANTITIES IS 112 LBS/SQ YD/IN.
2. THE AC TYPE FOR POLYMERIZED HMA MIXTURES SHALL BE "SBS/SBR PG 76-22" AND FOR NON-POLYMERIZED HMA THE "AC TYPE" SHALL BE "PG 64-22" UNLESS MODIFIED BY DISTRICT ONE SPECIAL PROVISIONS. FOR USE OF RECYCLED MATERIALS SEE DISTRICT ONE SPECIAL PROVISIONS.
3. PORTLAND CEMENT CONCRETE TEMPORARY PAVEMENT SHALL CONSIST OF CLASS PV CONCRETE MEETING THE REQUIREMENTS OF ART. 1020 OF THE STANDARD SPECIFICATIONS. TEMPORARY PORTLAND CEMENT CONCRETE PAVEMENT DOES NOT REQUIRE DOWEL BARS.



DI60W25-sh-typical-01
USER NAME = moronik
PLOT SCALE = 10.0000' / in.
PLOT DATE = 5/15/2013

DESIGNED - AFC
DRAWN - AFC
CHECKED - DBM
DATE - 5/14/2013

REVISED -
REVISED -
REVISED -
REVISED -

STATE OF ILLINOIS
DEPARTMENT OF TRANSPORTATION

TYPICAL SECTIONS

SCALE: NTS SHEET 1 OF 3 SHEETS STA. TO STA.

F.A.I. RTE.	SECTION	COUNTY	TOTAL SHEETS	SHEET NO.
90/94/290	2013-007R	COOK	317	28
CONTRACT NO. 60W25				
ILLINOIS FED. AID PROJECT				